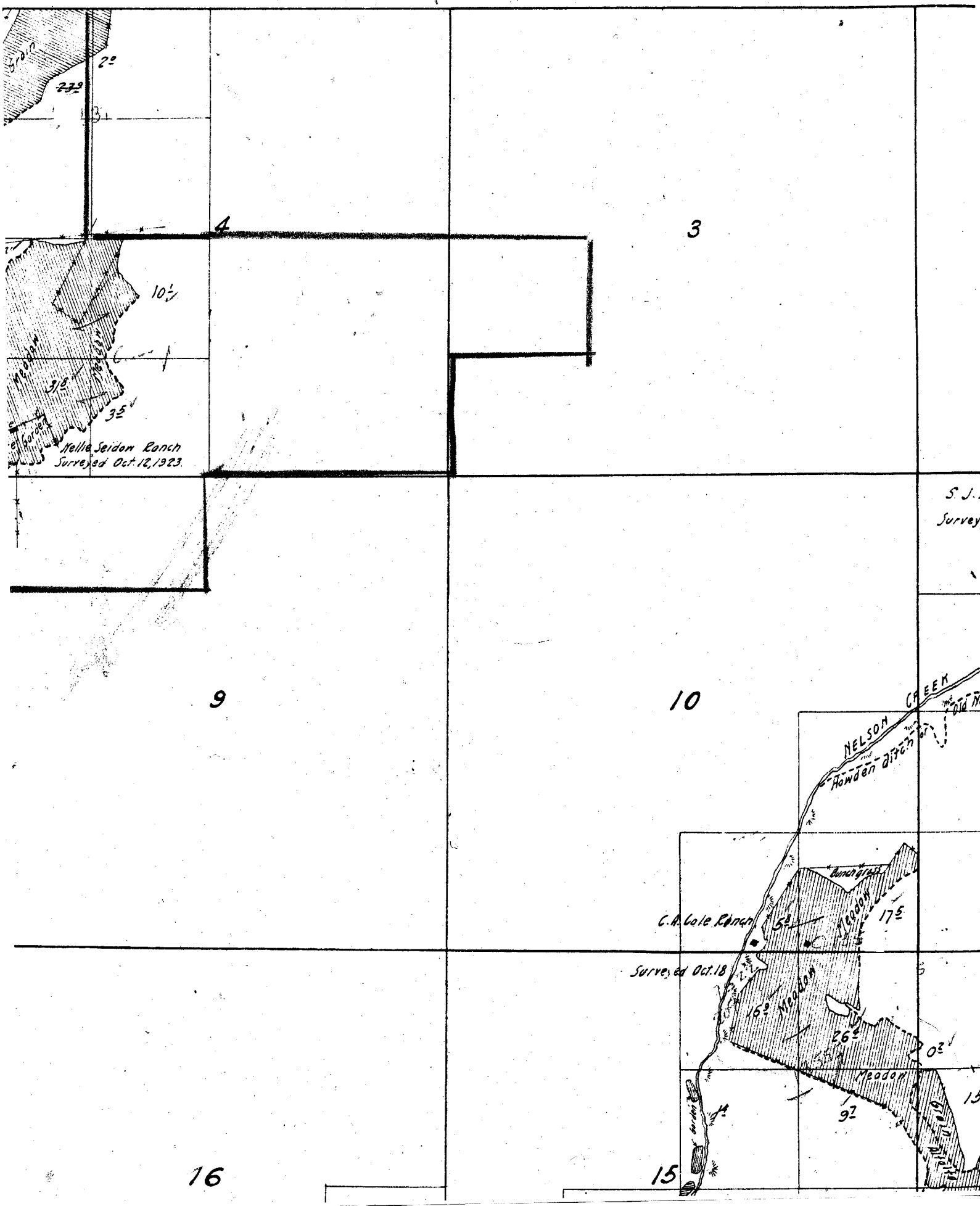


township

12 S,

Range

21 E.



Range 21 E.

10-1-1

3

10

C M Dollar hide

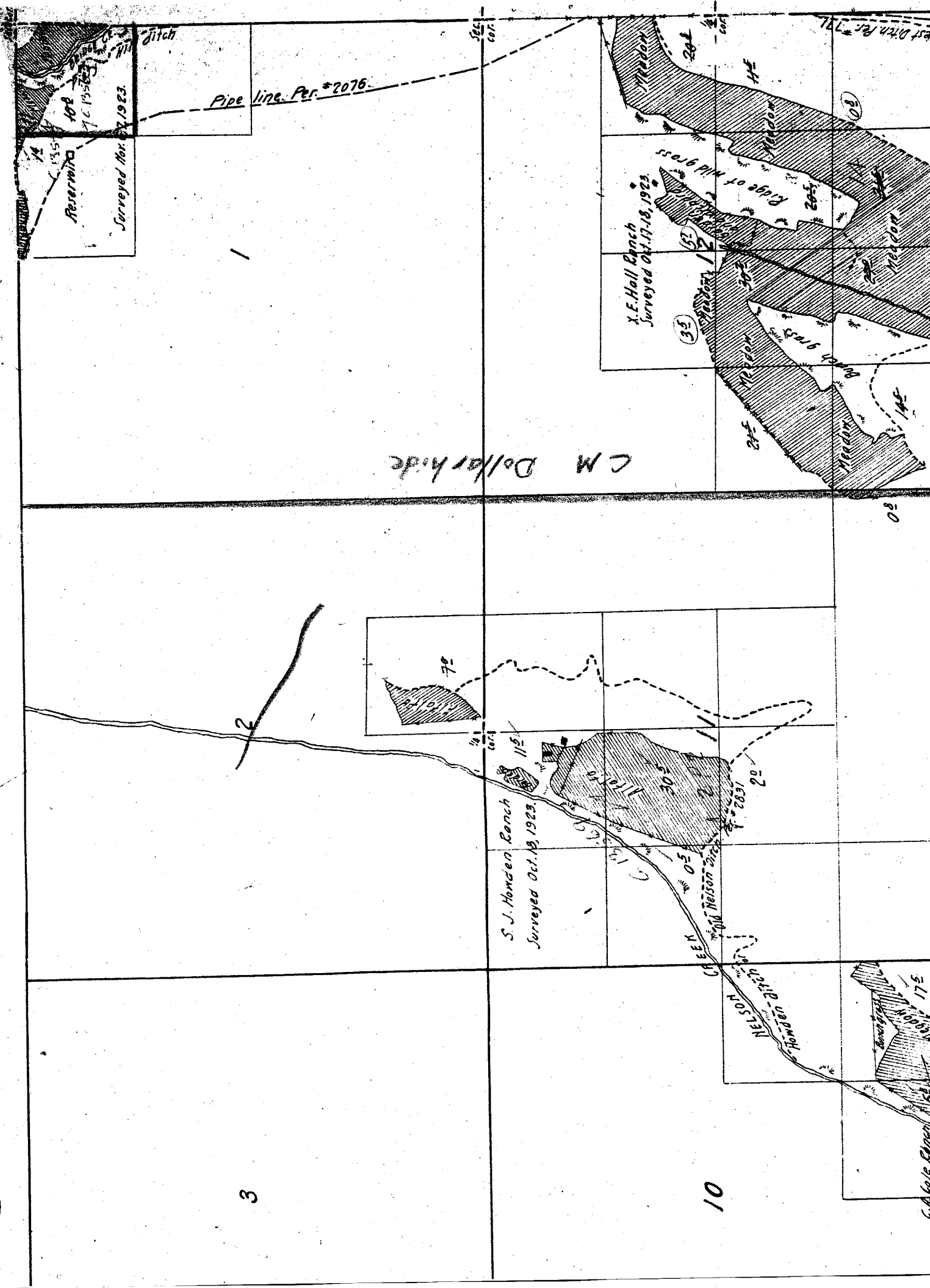
Pipe line Per. #2076

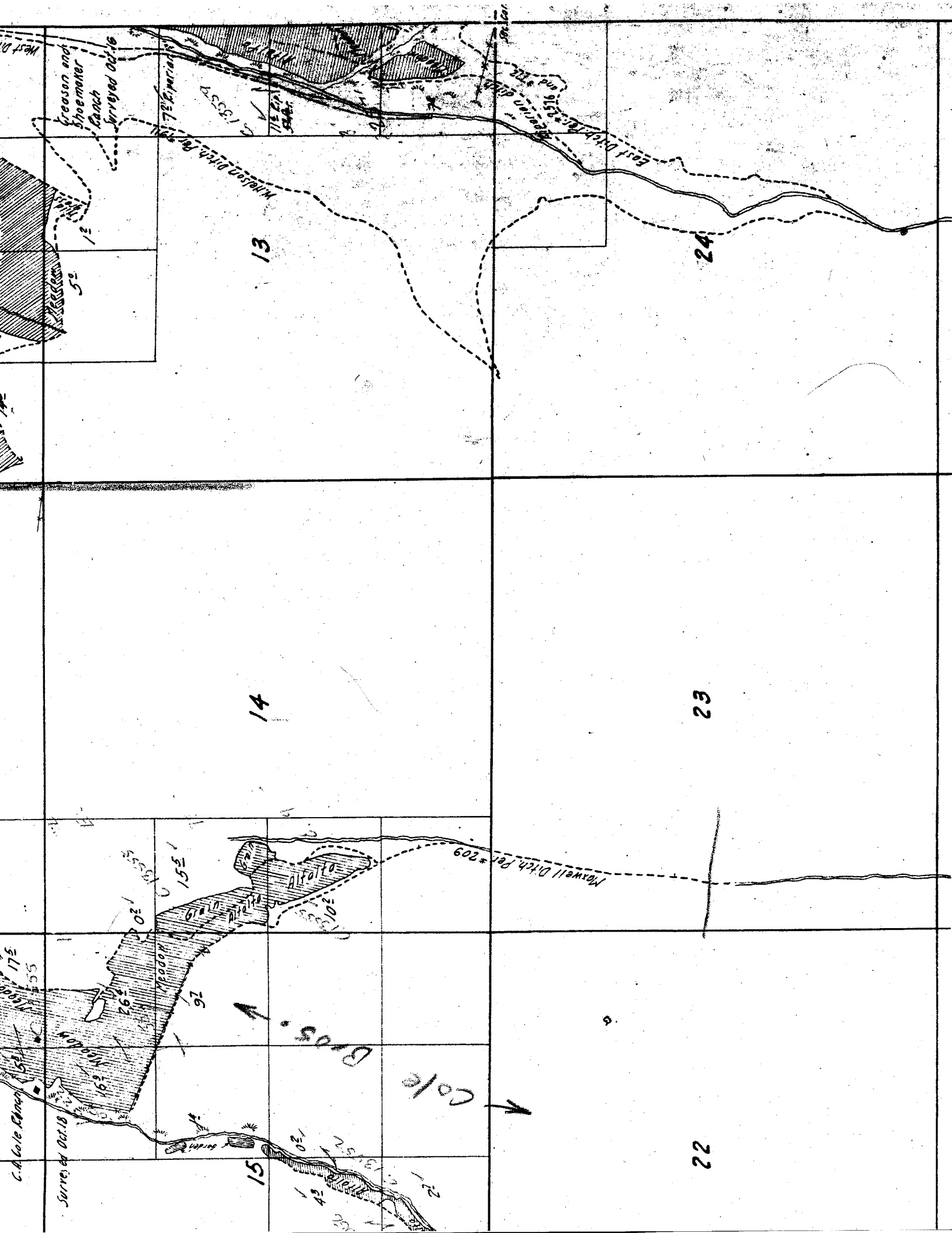
Revermita
102
76.13.1923
Surveyed Nov. 27, 1923.

X.E. Hall Ranch
Surveyed Oct. 17-18, 1923.

S. J. Horden Ranch
Surveyed Oct. 19, 1923.

C. A. Cole Ranch
175





West Ditch
 Greason and Shoemaker Ranch
 Surveyed Oct. 16

13

24

14

23

C.A. Cole Ranch
 Surveyed Oct. 18

Bios.

Cole

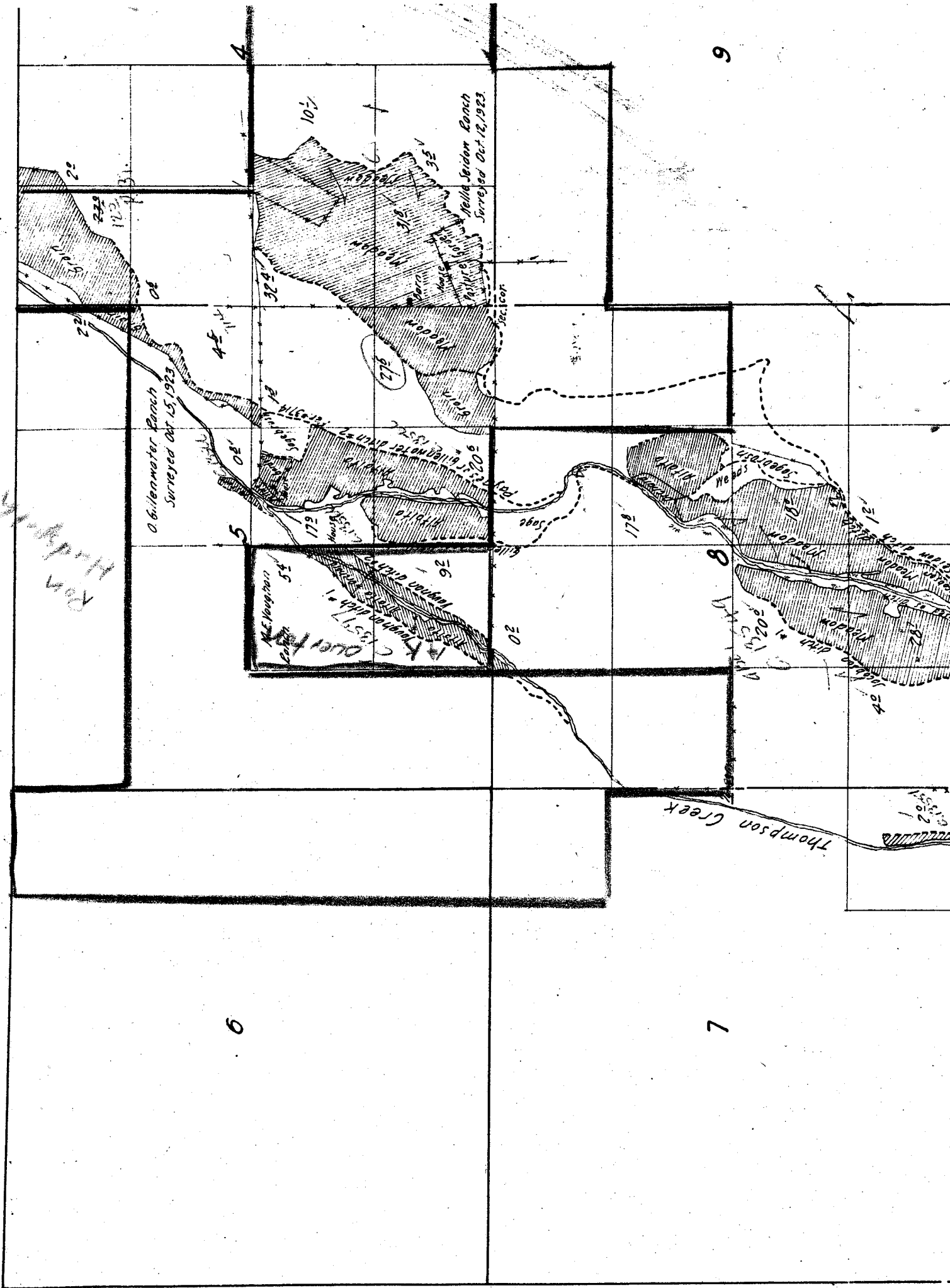
15

22

Maxwell Ditch Per. # 209



Township



9

6

7

O'Brienwater Ranch
Surveyed Oct 15, 1923

Melle Selcom Ranch
Surveyed Oct 12, 1923

Thompson Creek

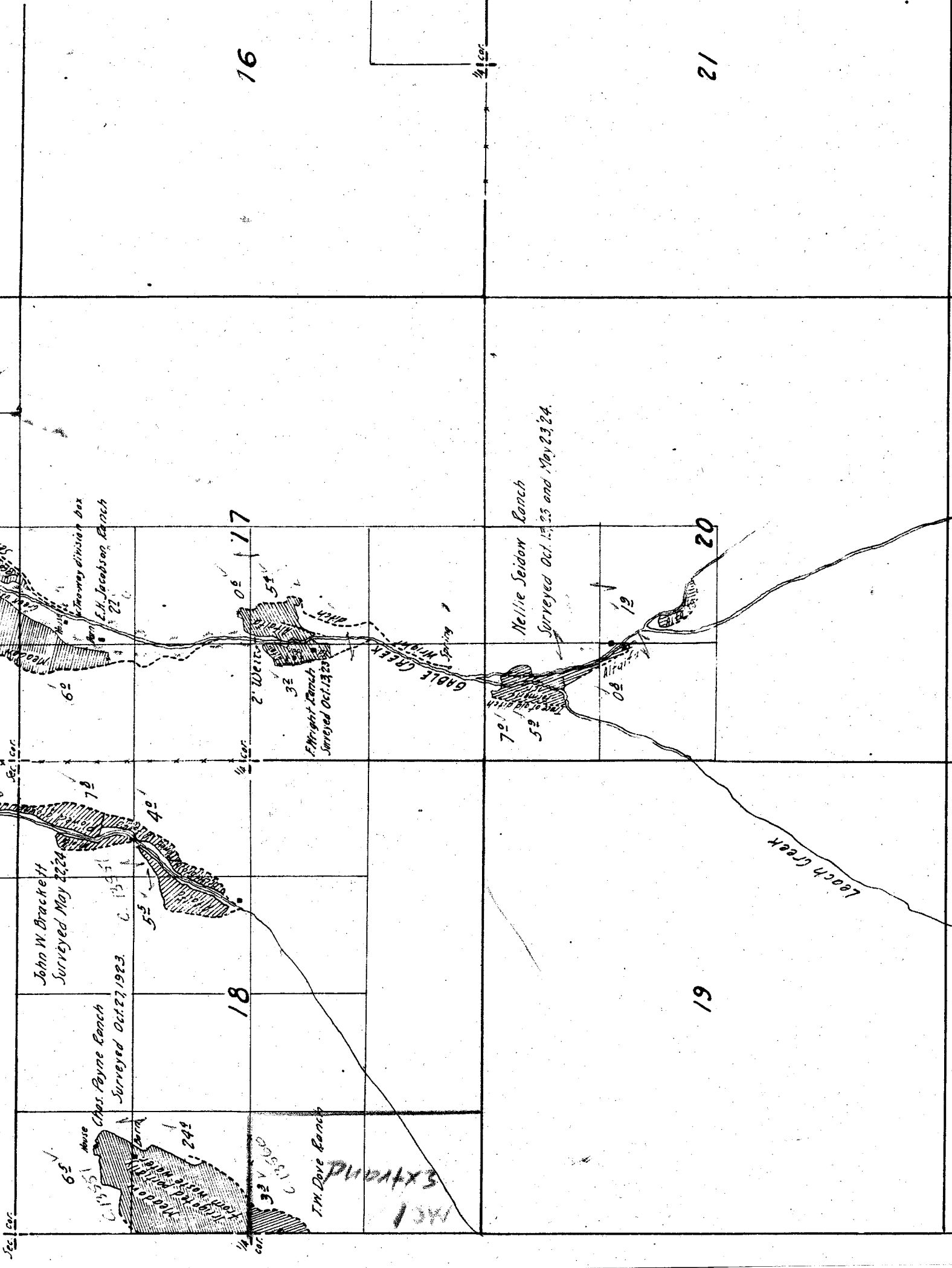
R.M. Hildman

A.E. Vaughan

Sec. cor.

Sec. cor.

1/4 cor.



16

12

17

20

18

19

John W. Brackett
Surveyed May 22, 24.

Chas. Payne Ranch
Surveyed Oct. 27, 1923.

J.M. Dove Ranch
Surveyed Oct. 13, 23.

Elmright Ranch
Surveyed Oct. 13, 23.

Nellie Seidow Ranch
Surveyed Oct. 13, 23 and May 23, 24.

L.H. Jacobson Ranch
Surveyed Oct. 13, 23.

PHOTO 134

PHOTO 135

Loach Creek

Loach Creek

1/4 cor.

1/4 cor.

1/4 cor.

1/4 cor.

1/4 cor.

1/4 cor.

1/4 cor.

1/4 cor.

1/4 cor.

1/4 cor.

1/4 cor.

1/4 cor.

1/4 cor.

1/4 cor.

1/4 cor.

1/4 cor.

1/4 cor.

1/4 cor.

1/4 cor.

1/4 cor.

1/4 cor.

1/4 cor.

1/4 cor.

1/4 cor.

1/4 cor.

19

20

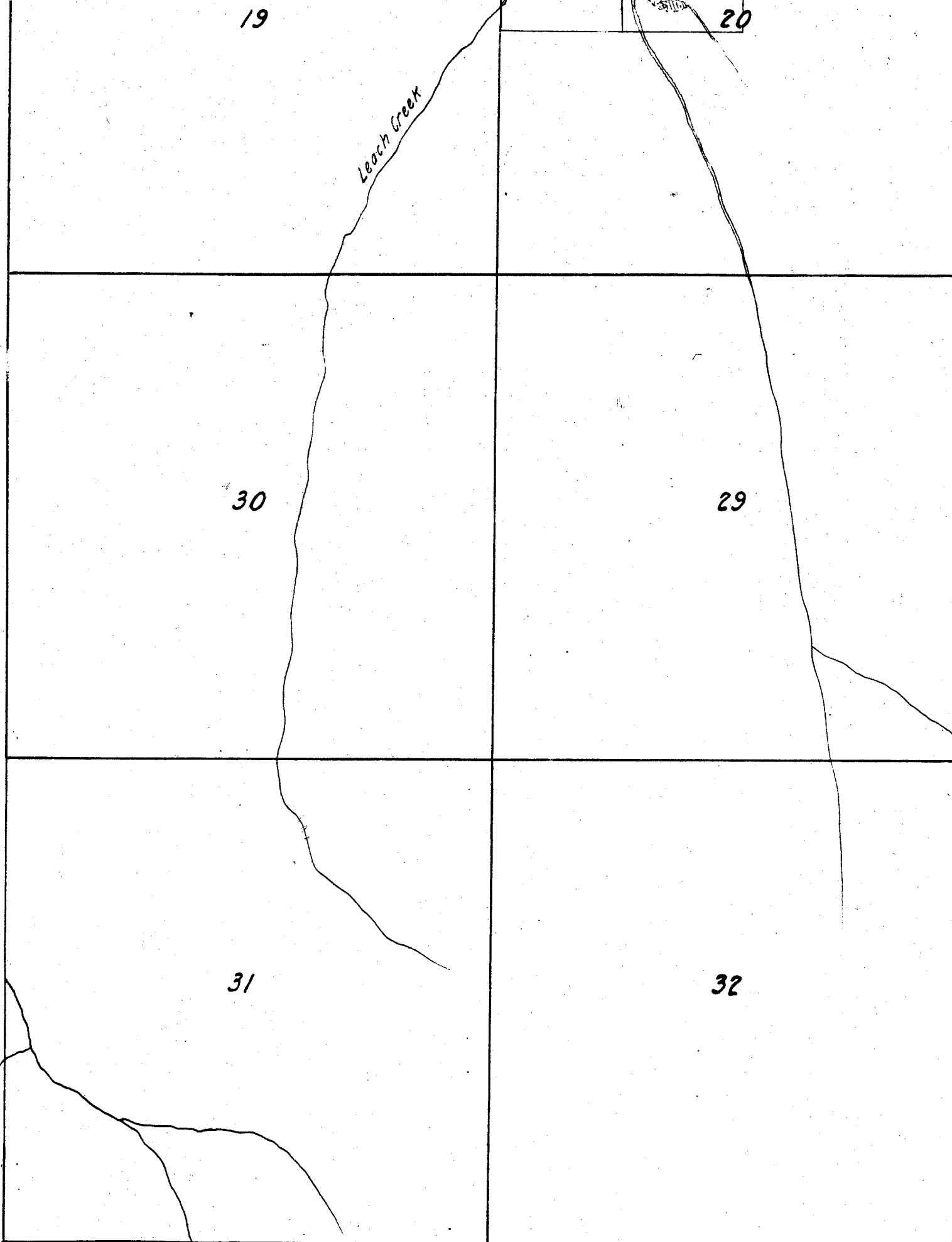
Leach Creek

30

29

31

32



23

24

26

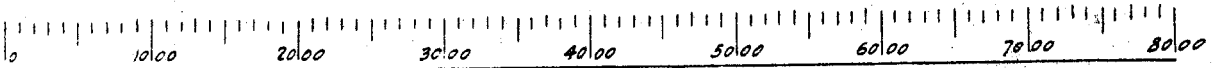
25

MILL CREEK

35

36

Note: - Creeks sketched in approximate location from U.S. Township plats or from Forest Service map except in vicinity of irrigated areas. Permit ditches plotted in approximate location from permit maps except in vicinity of irrigated areas.



Scale of Feet.

6M Nelson Reservoir
Per # 462

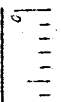
28

27

33

34

Maxwell Creek



23

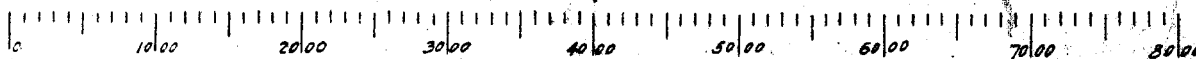
24

26

25

35

36



Scale of Feet.

26" x 27"

19

20

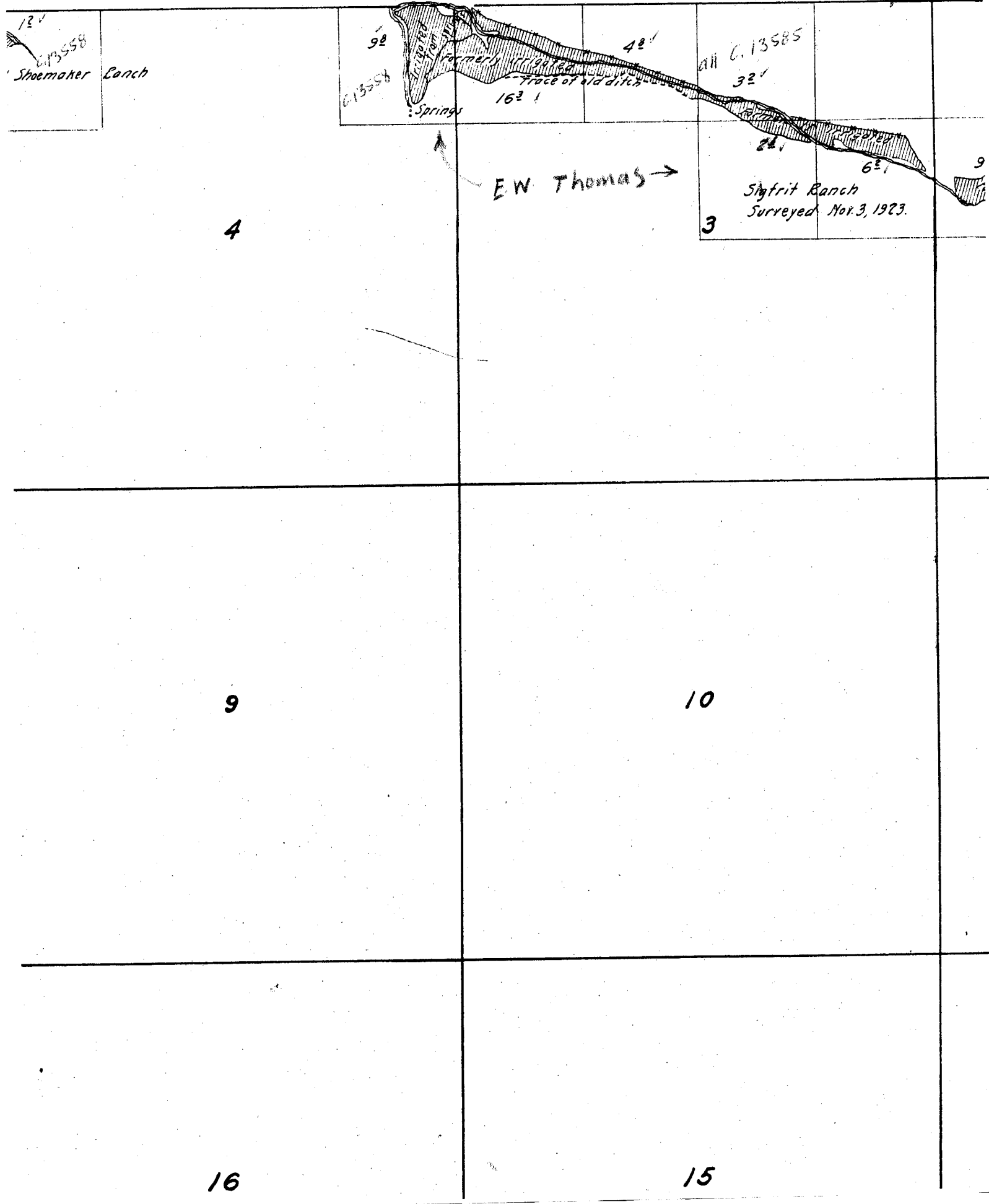
30

29

31

32

ownship 12 S, Range 22 E.



124
G. 13585
Shoemaker Ranch

92'
G. 13585
Springs
Formerly irrigated
Trace of old ditch
162'

42'
G. 13585
32'
21'
62'
3
Sigfrit Ranch
Surreyed Nov. 3, 1923.

E.W. Thomas →

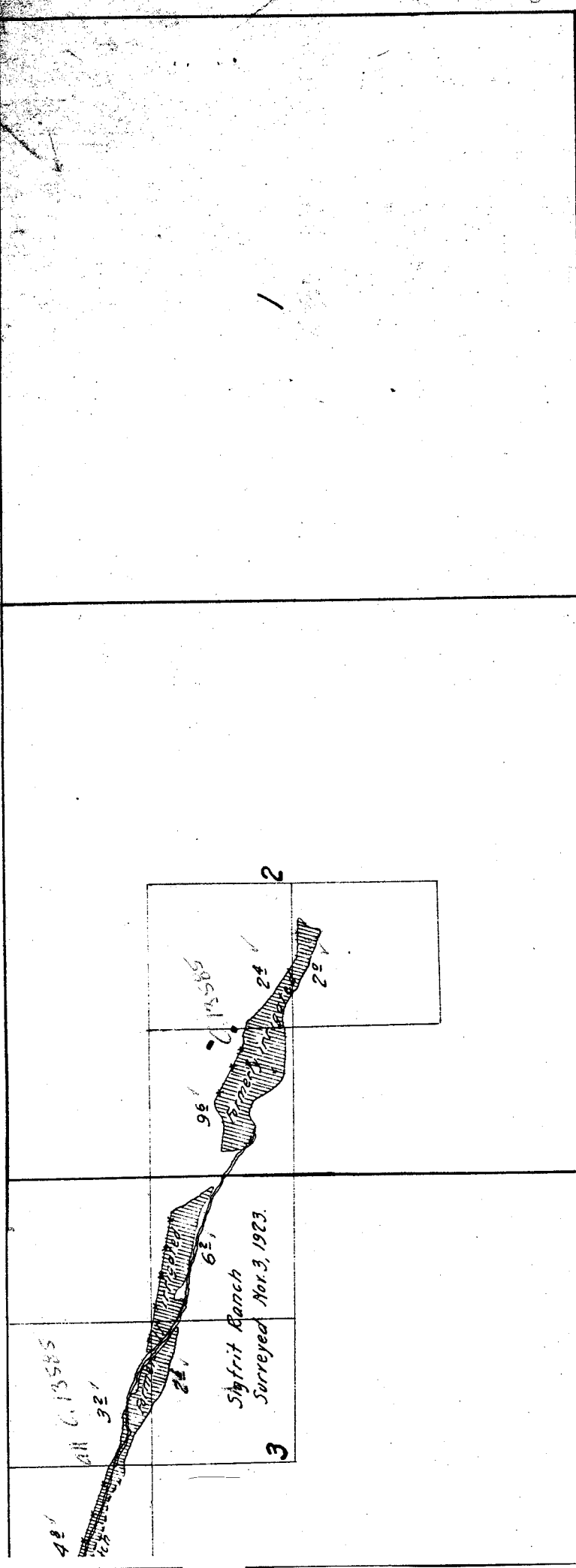
4

9

10

16

15



10

11

12

13

24

14

23

15

22

28

27

33

34



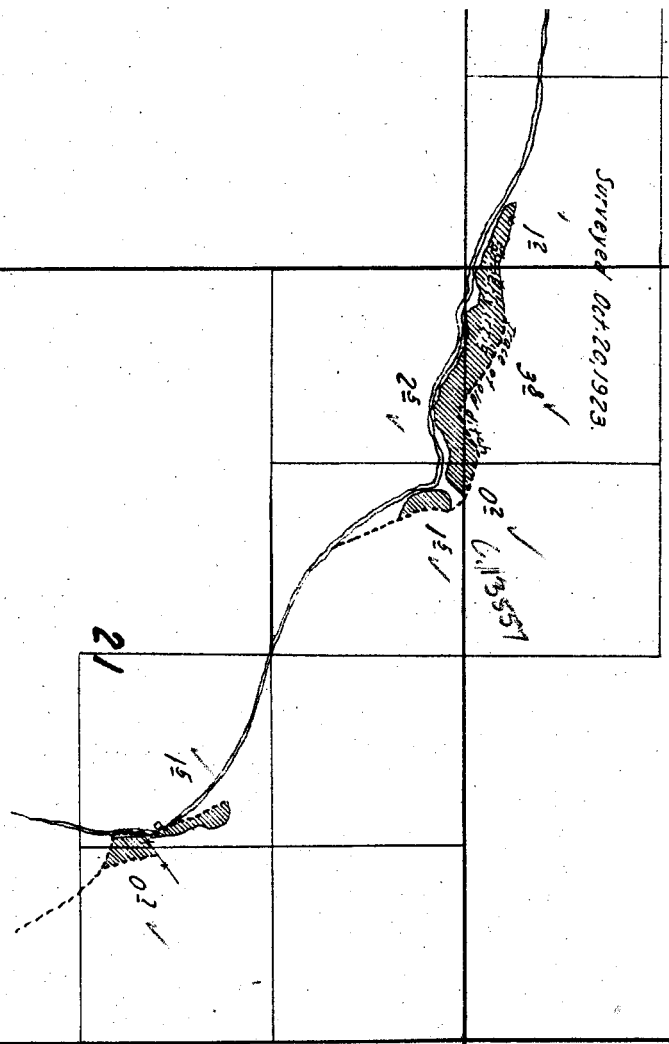
16

15

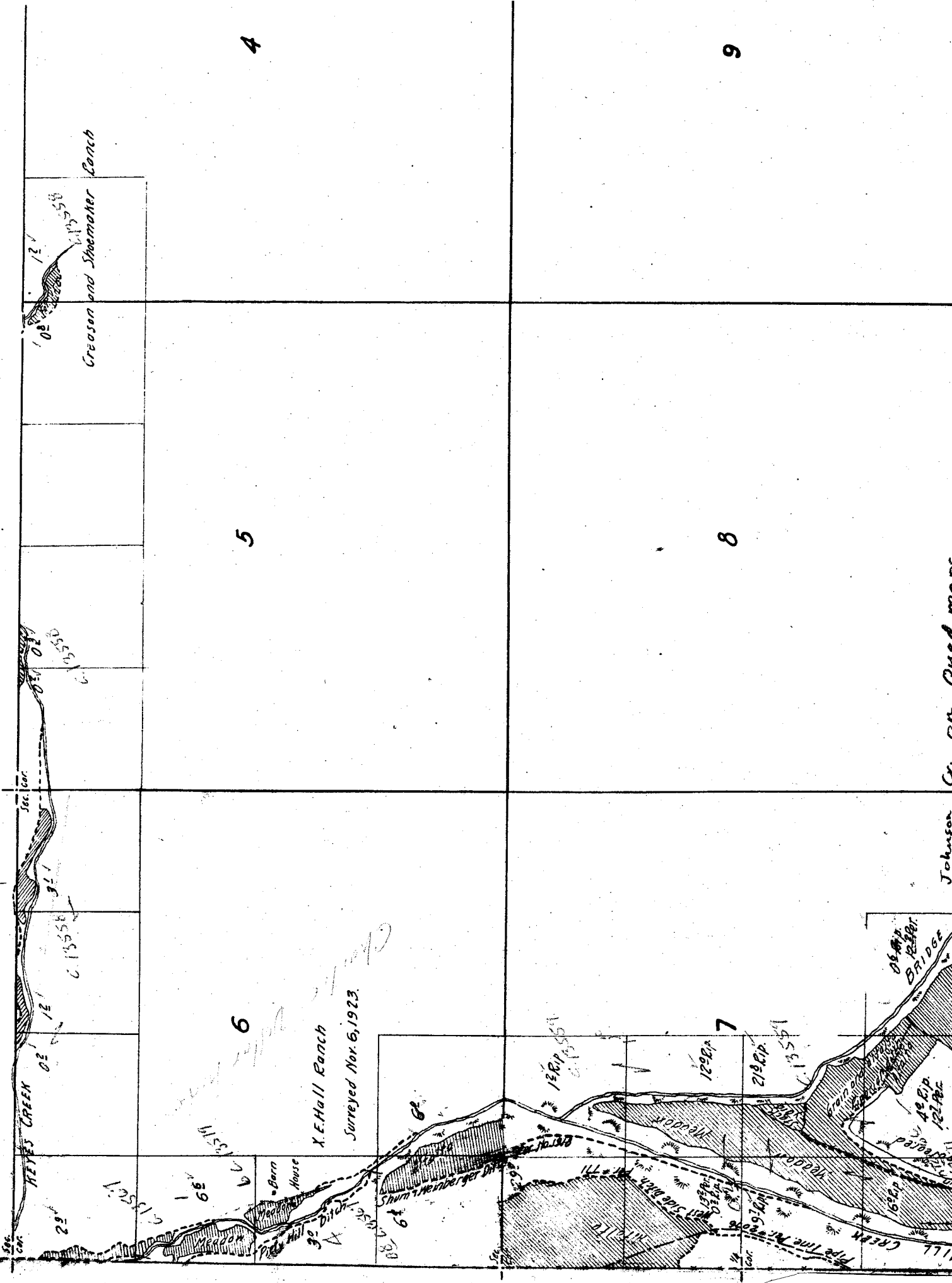
22

21

Surveyed Oct 20, 1923.



Township 1



Cr. on Quad maps

Johnson

CREEK

WIDGE

CREEK

WIDGE

CREEK

WIDGE

CREEK

WIDGE

CREEK

WIDGE

CREEK

WIDGE

CREEK

WIDGE

CREEK

WIDGE

Crebson and Shoemaker Ranch
Surveyed Oct 16, 17, 20
6.27

4-

East Side Ditch

W. N. 2576

239

88

177

177

18

17

16

15551

68

70

151

10

151

151

151

151

Surveyed Oct. 20, 1923.

15551

68

70

151

10

151

151

151

151

WOOD CAMP CREEK

15551

68

70

151

10

151

151

151

151

151

151

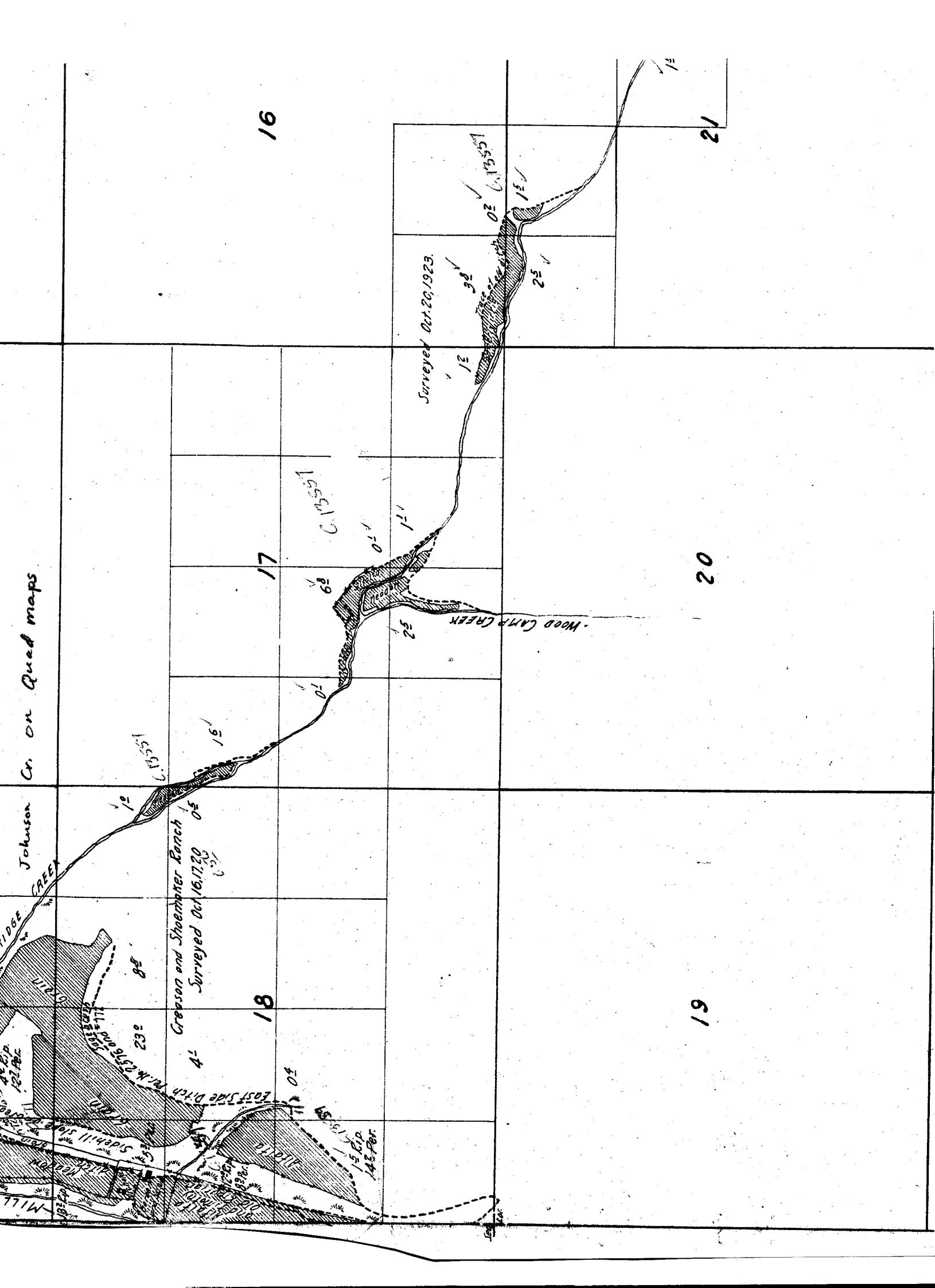
151

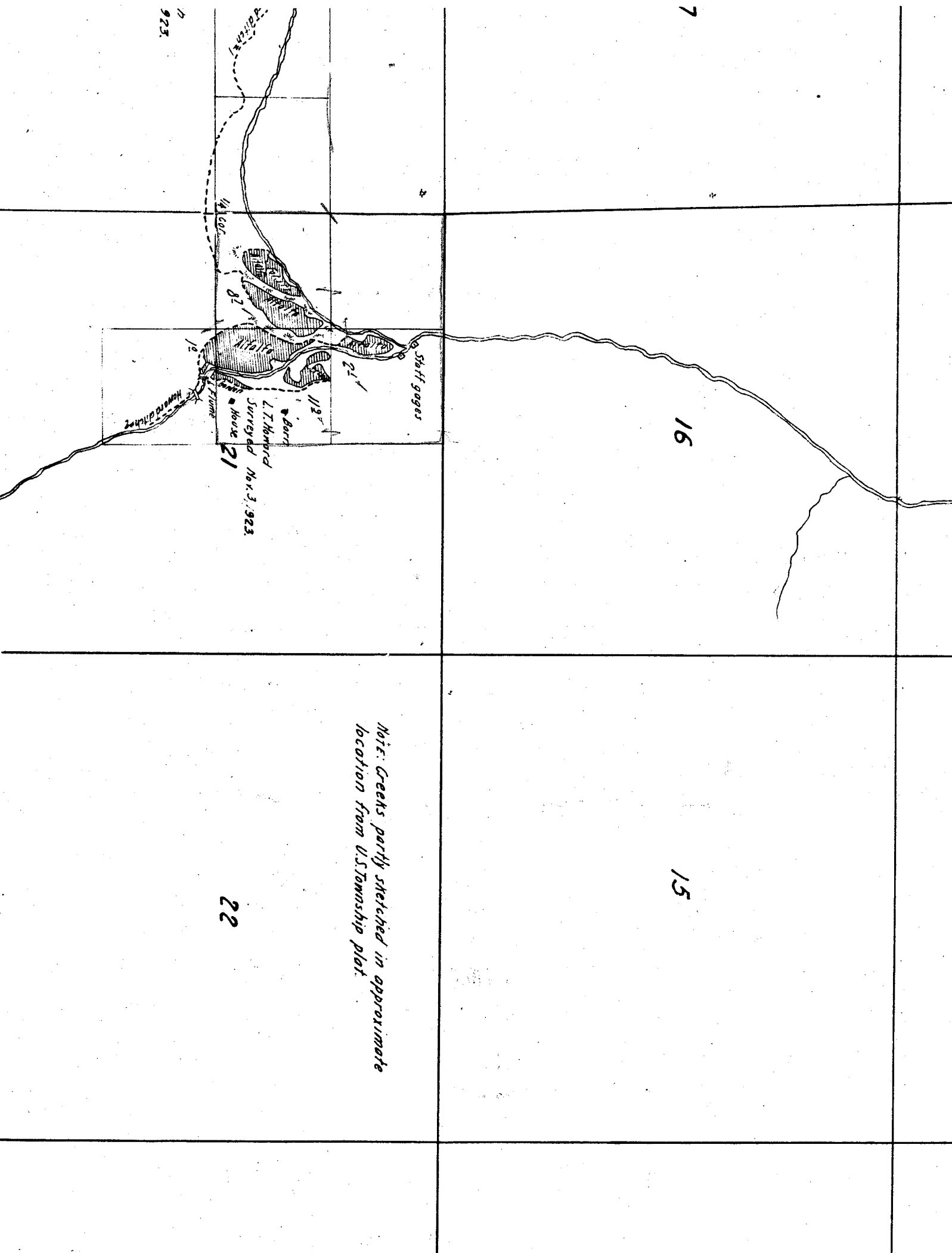
151

19

20

21





Note: Creeks partly sketched in approximate location from U.S. Township plat.

923

7

16

15

22

Staff gages

Barre

L. Thornd
Surveyed No. 3, 1923
House

21

Homestead ditch

1/4 Cor.

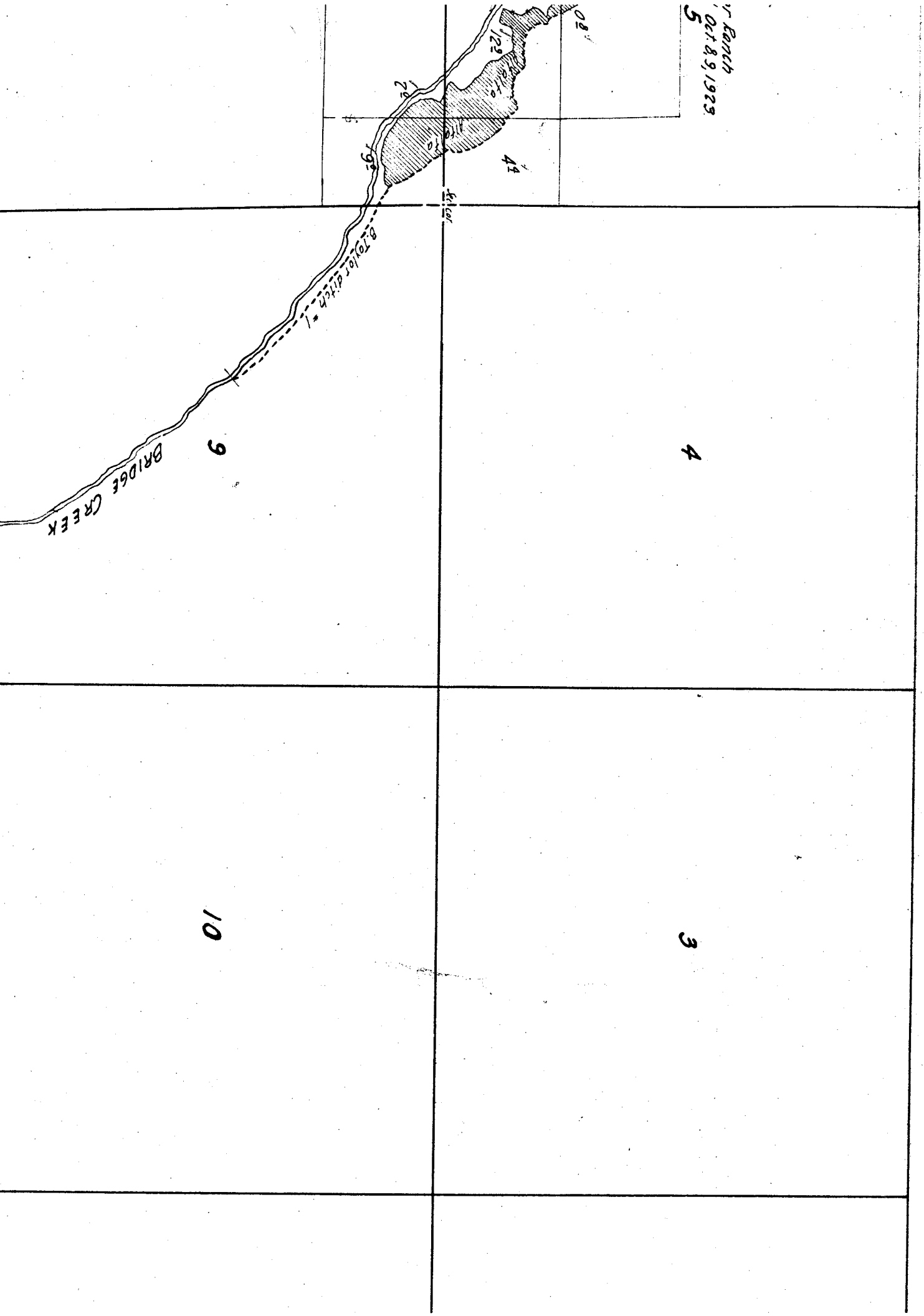
82

119

12

Township 11 S, Range 21 E.

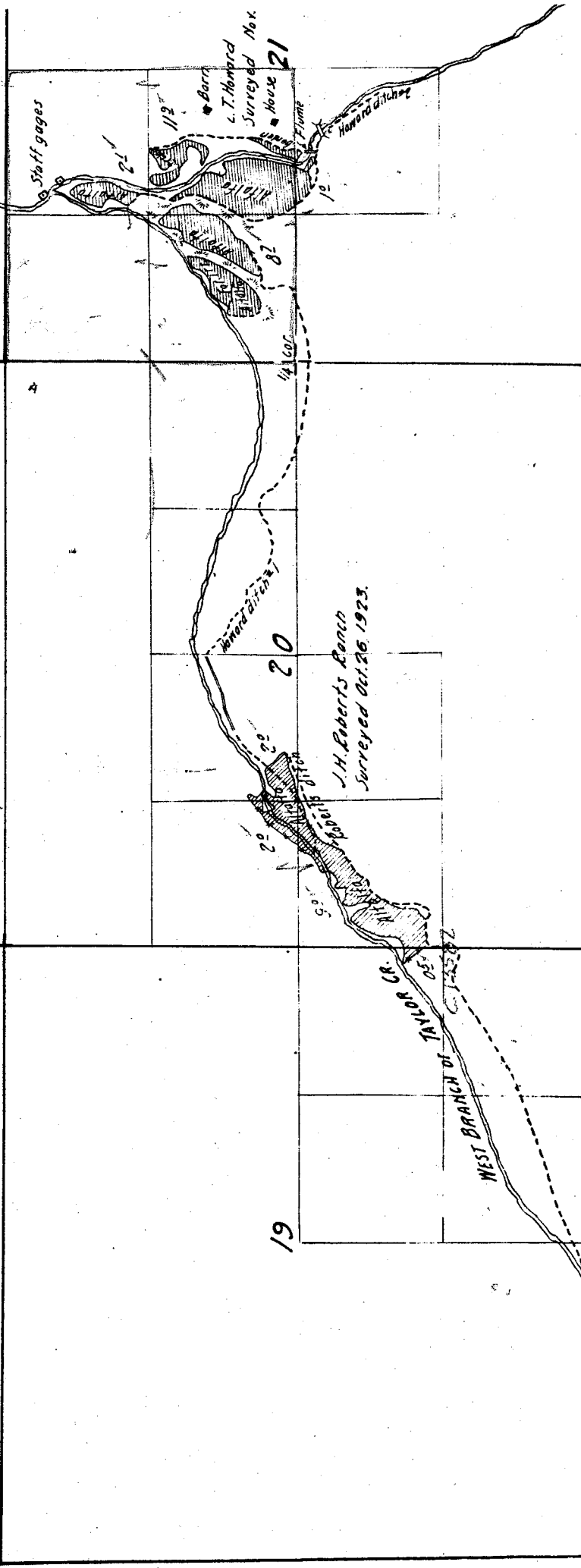
V. Ranch
Oct 8, 9, 1923
5

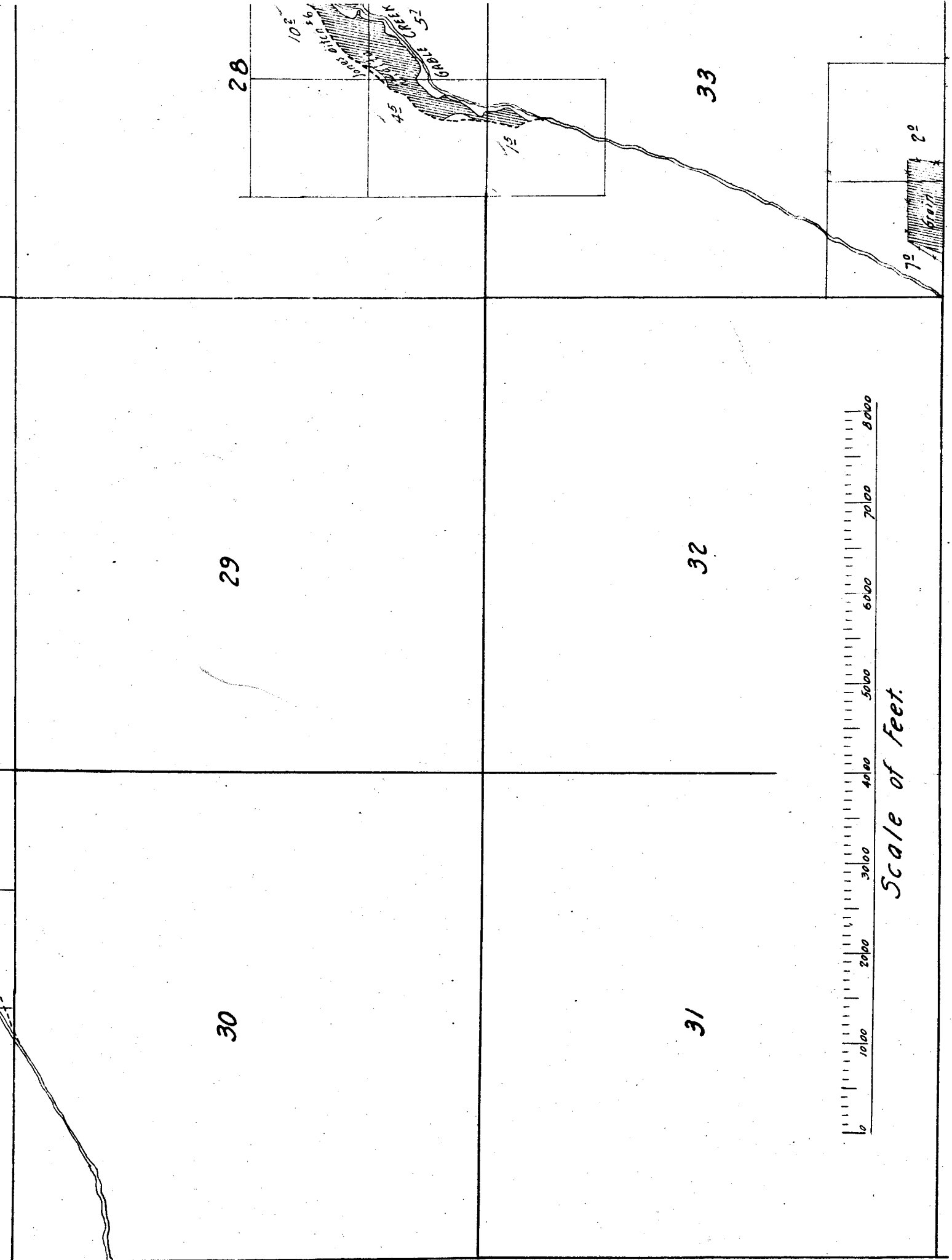


16

17

18





28

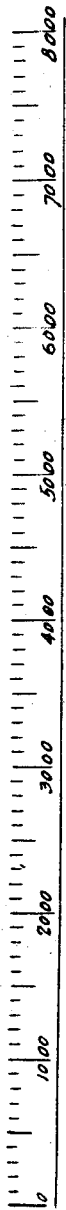
33

29

32

30

31



Scale of Feet.

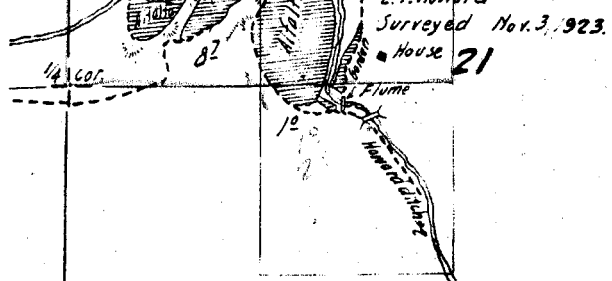
ORRIS CREEK
JONES
103
193
301

45

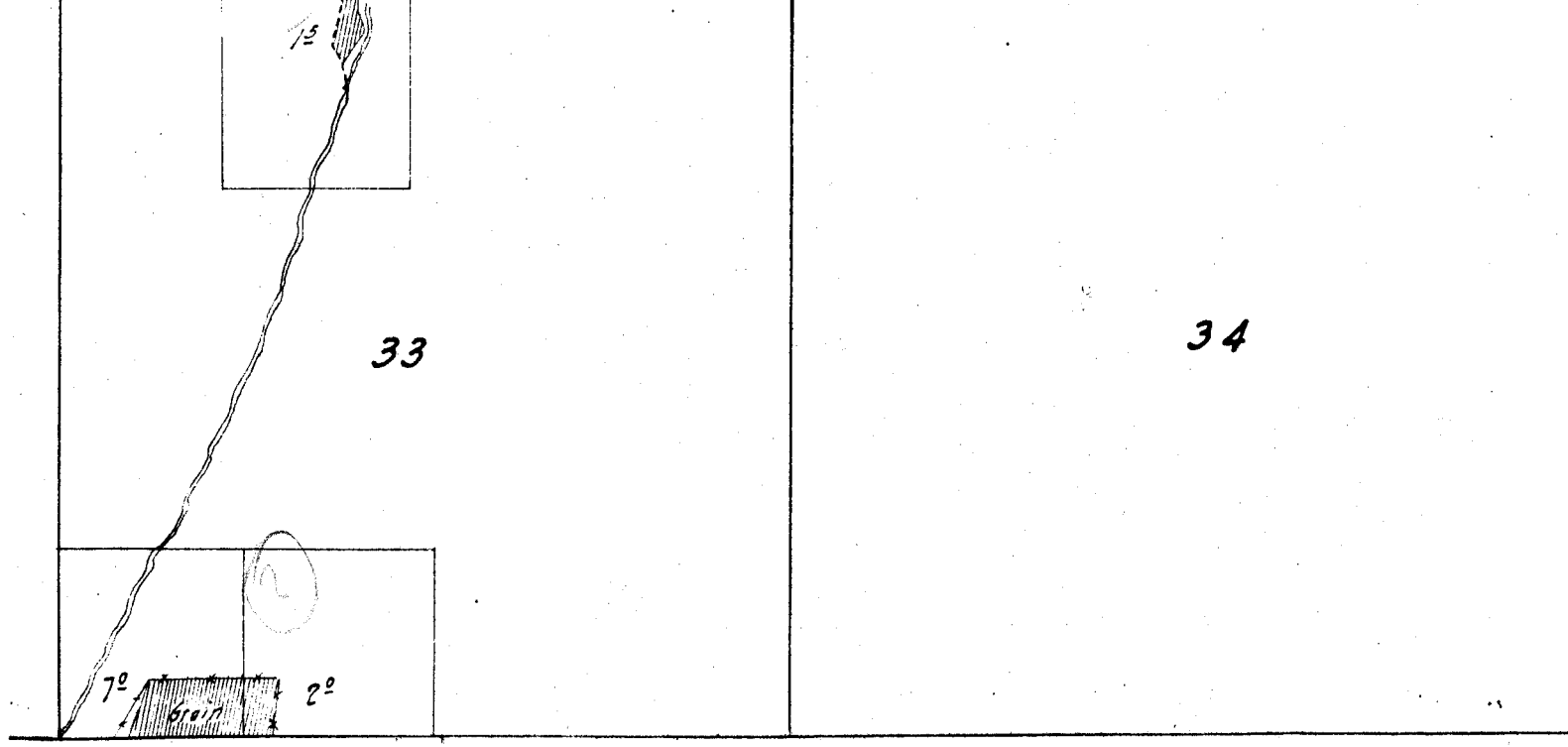
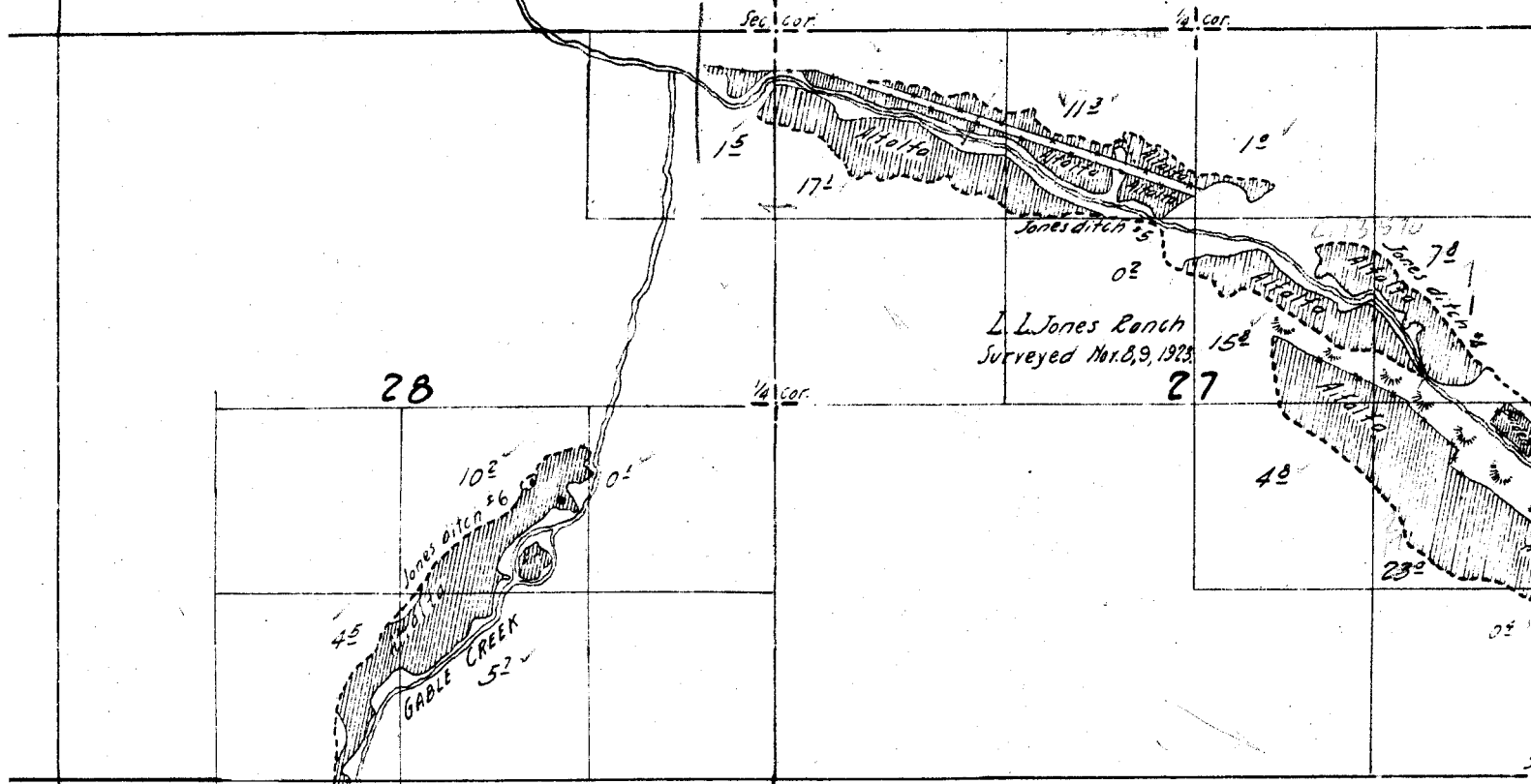
57

20°

70°



22



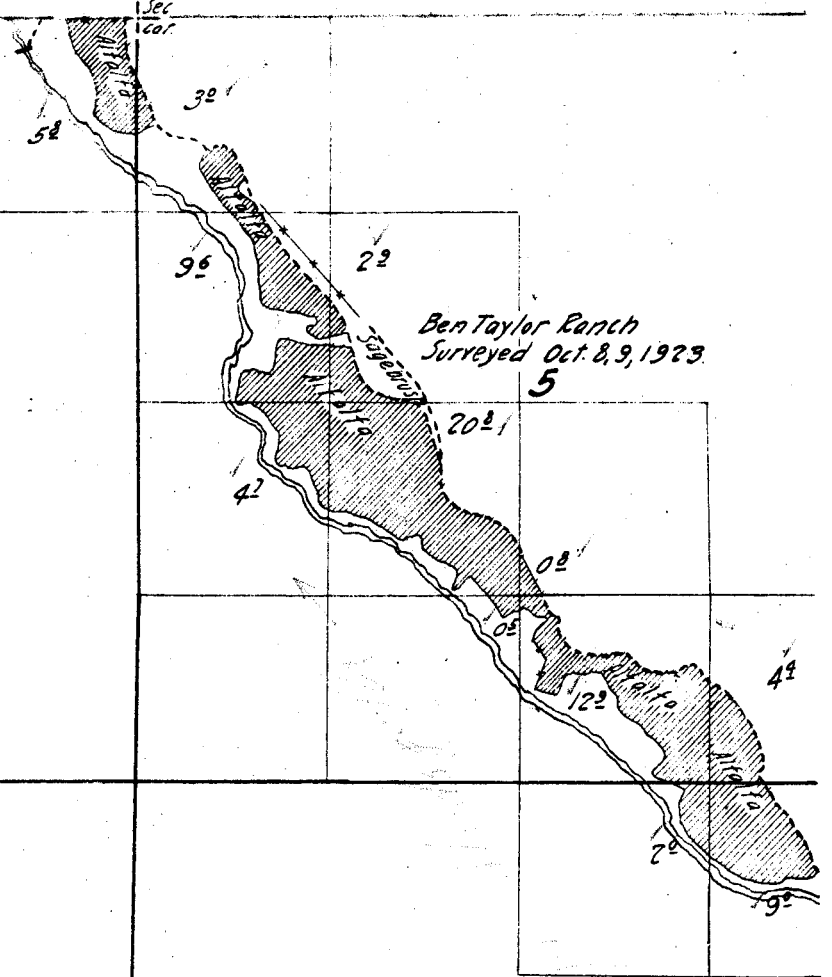
24 60'

Sec 160'

6

7

18



8

17

E.

6-1-1

2

1

11

12

14

13

13

24

14

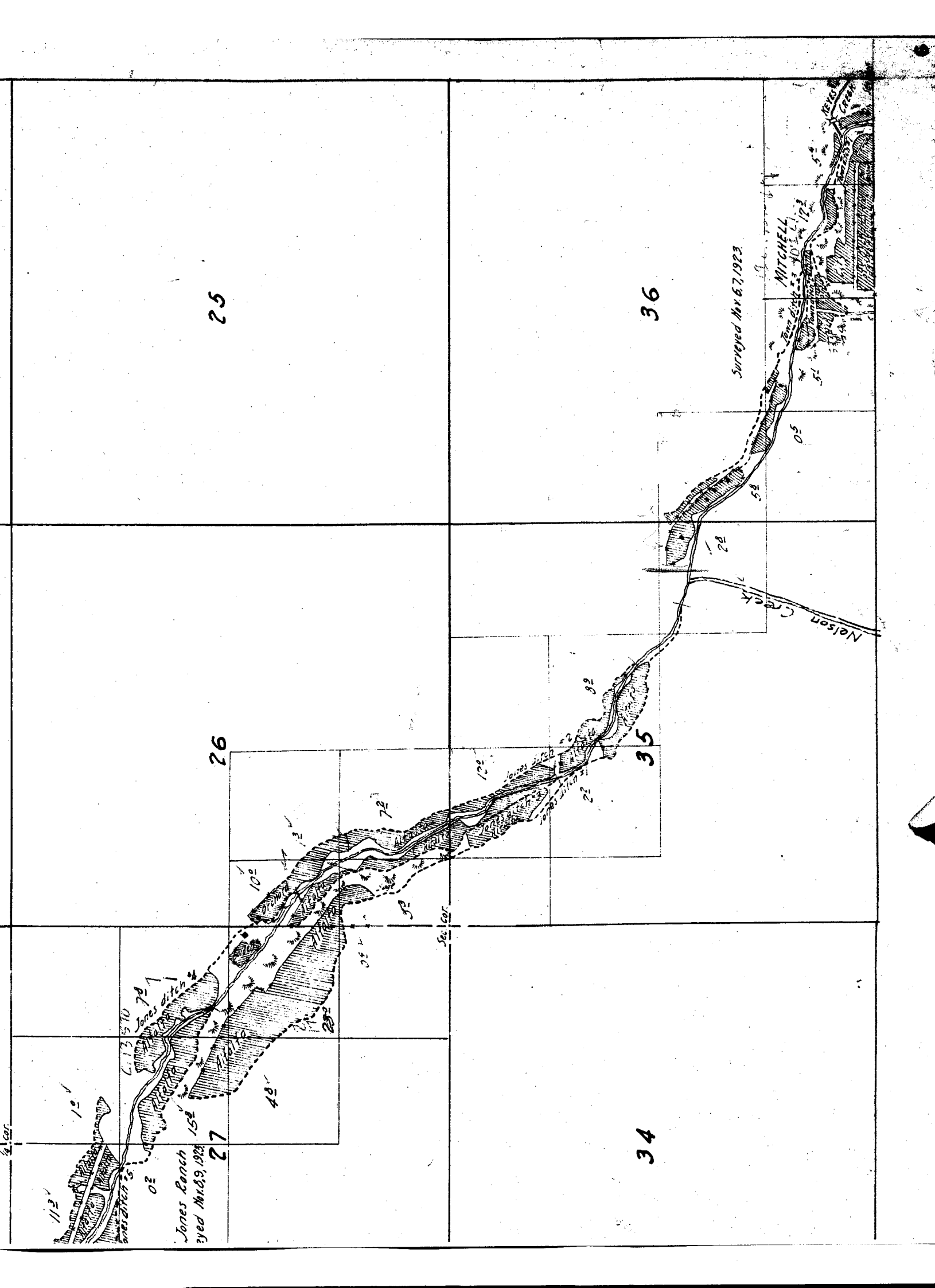
23

15

*'s partly sketched in approximate
from U.S. Township plat.*

22

1/2 Cor.



12324

76

21

22

