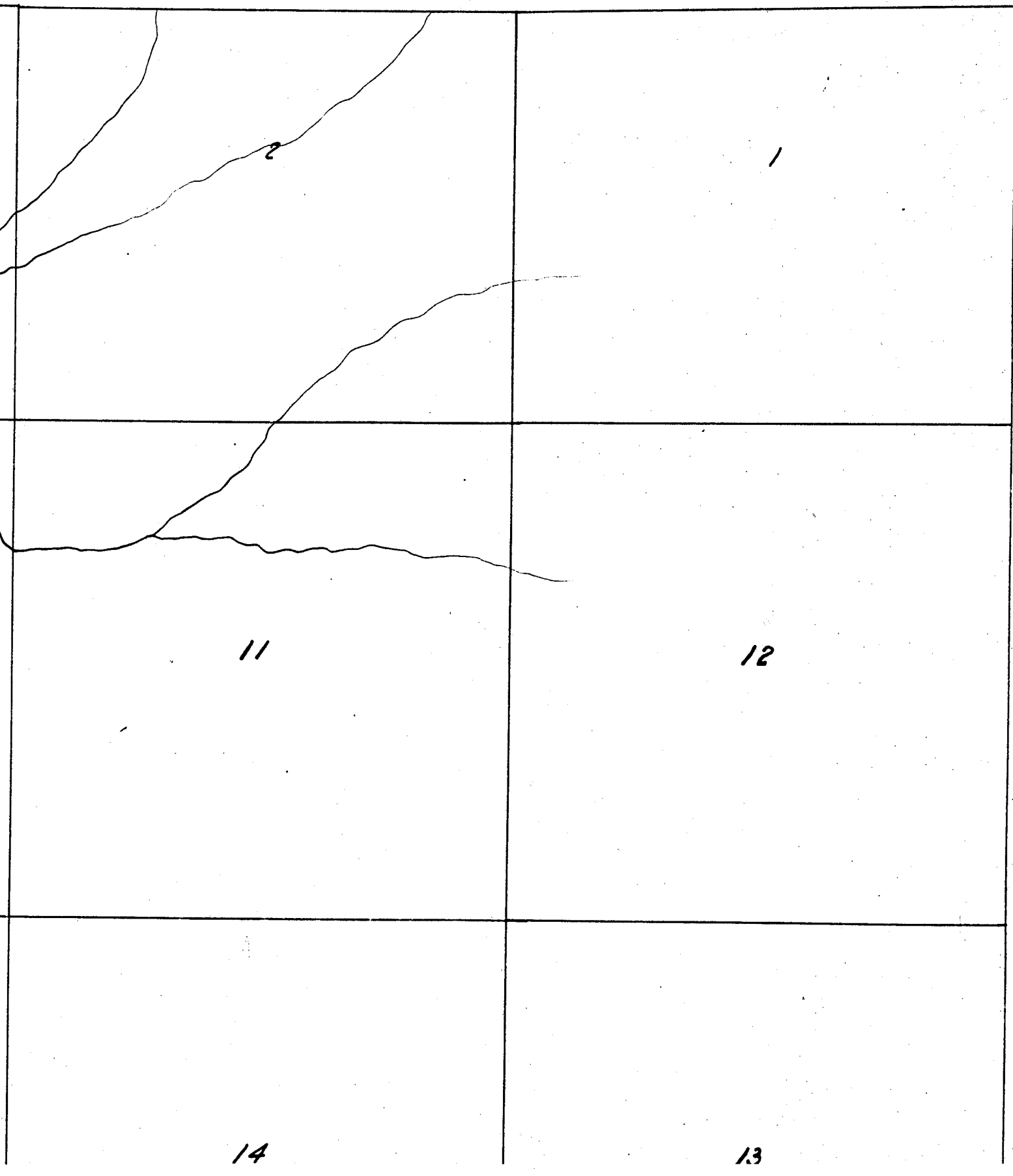


E.

1-1-1

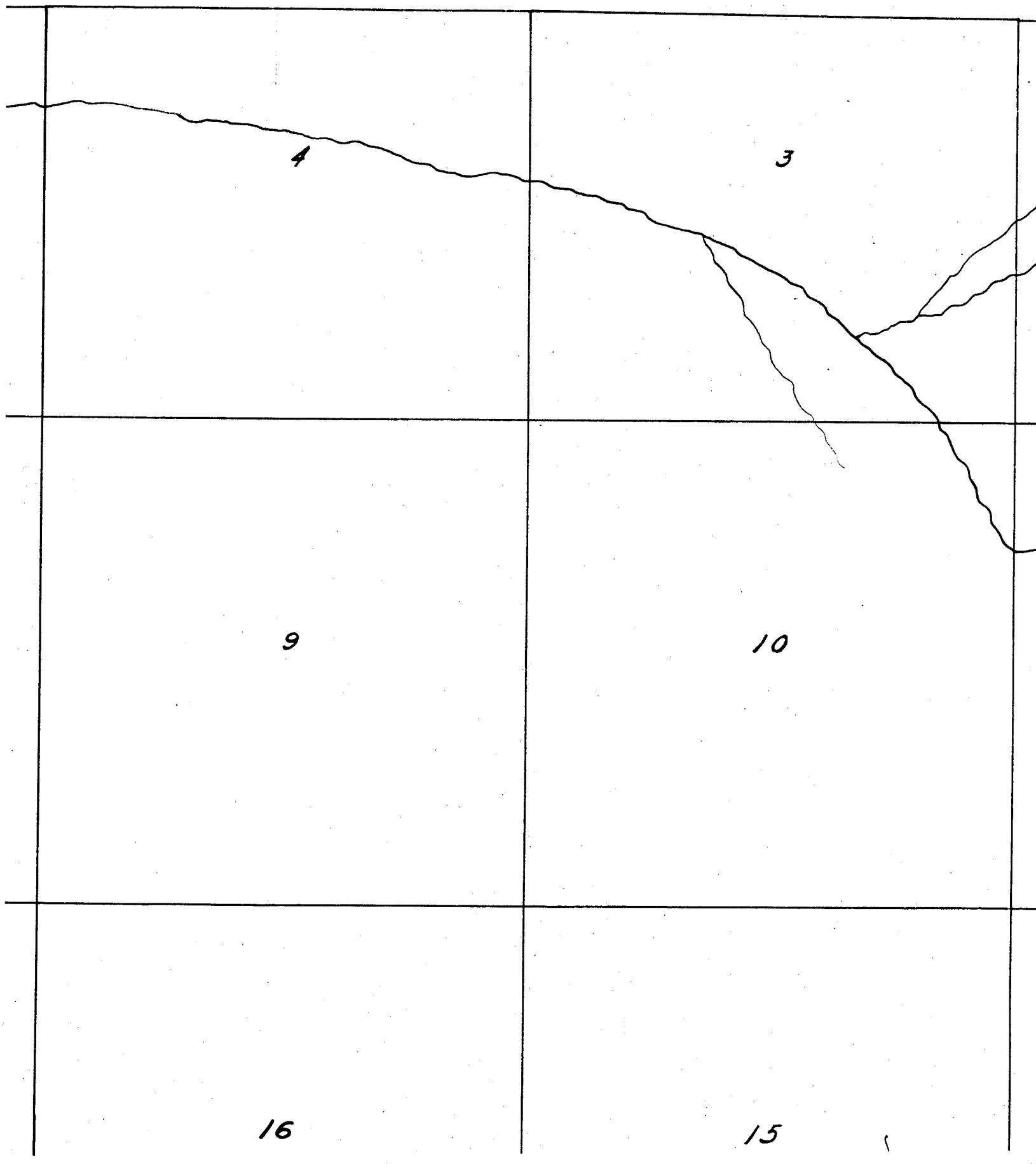


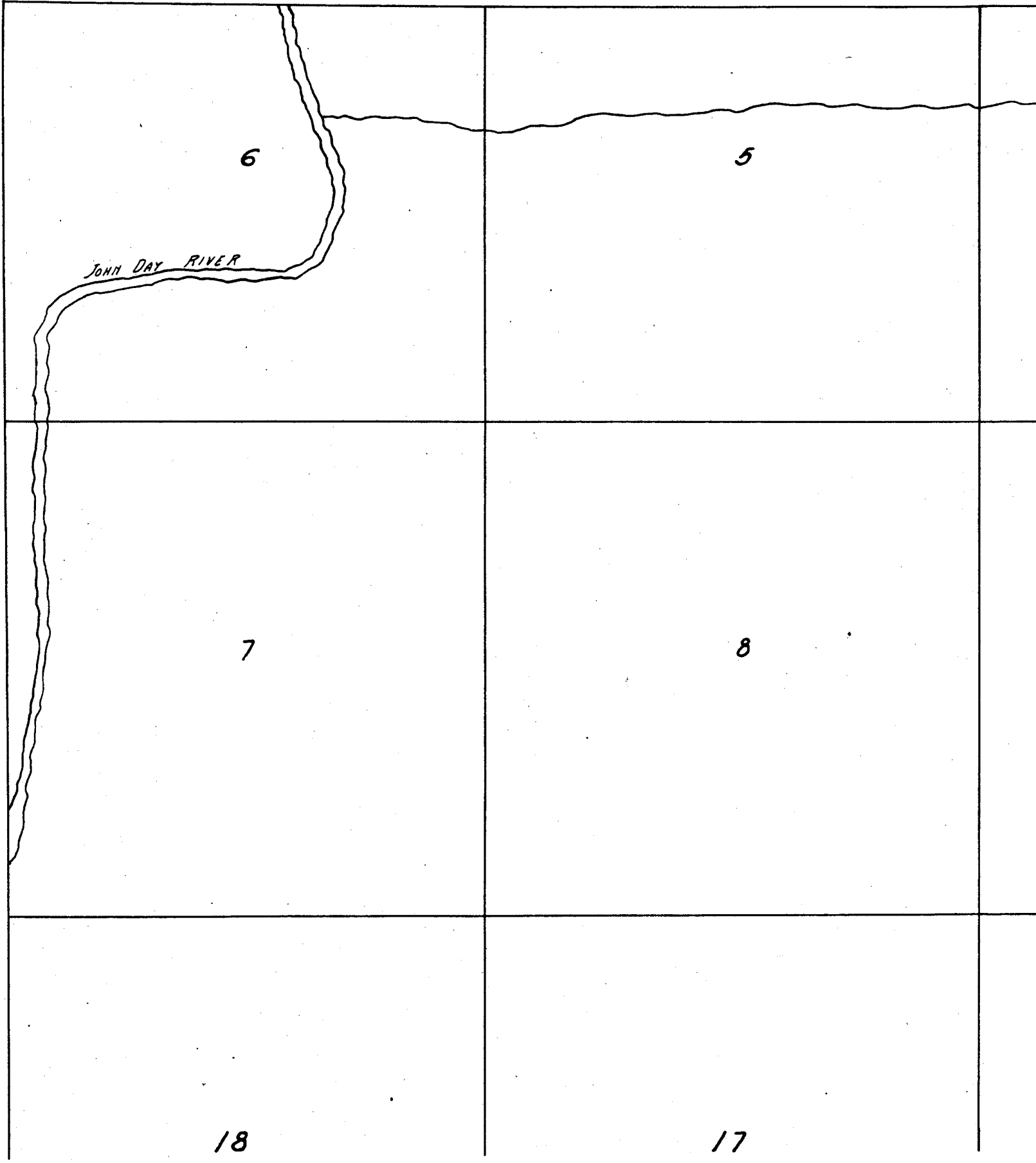
Township

9 S,

Range

20 E





13

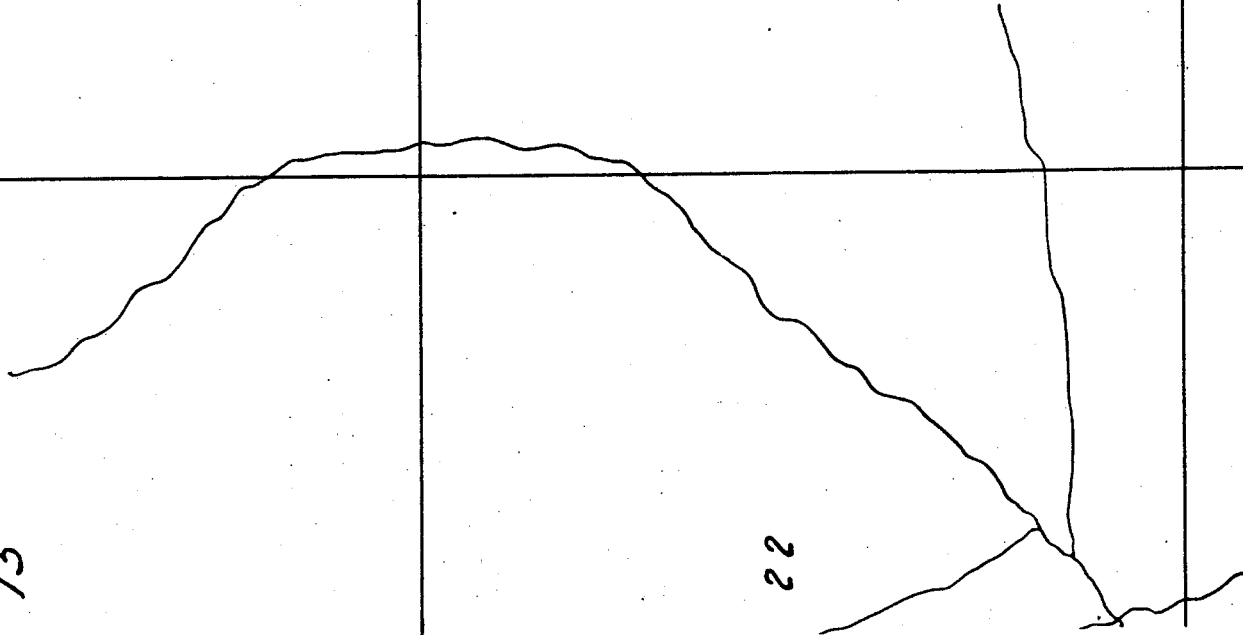
24

14

23

15

22



Note: Streams sketched in approximate location from U.S. Township plats.

25

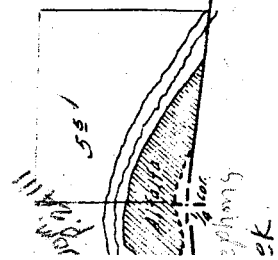
36

26

35

27

34



15

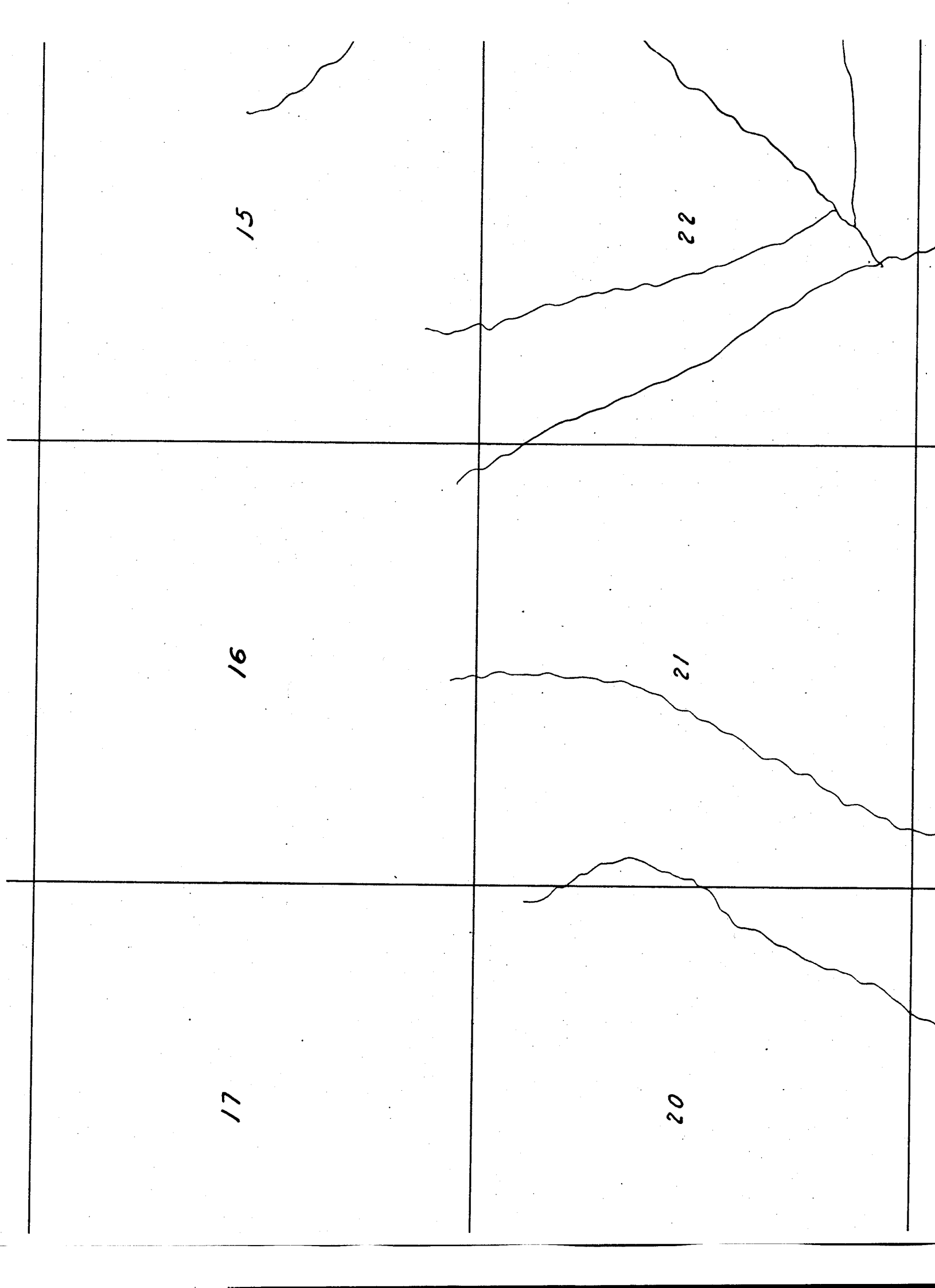
16

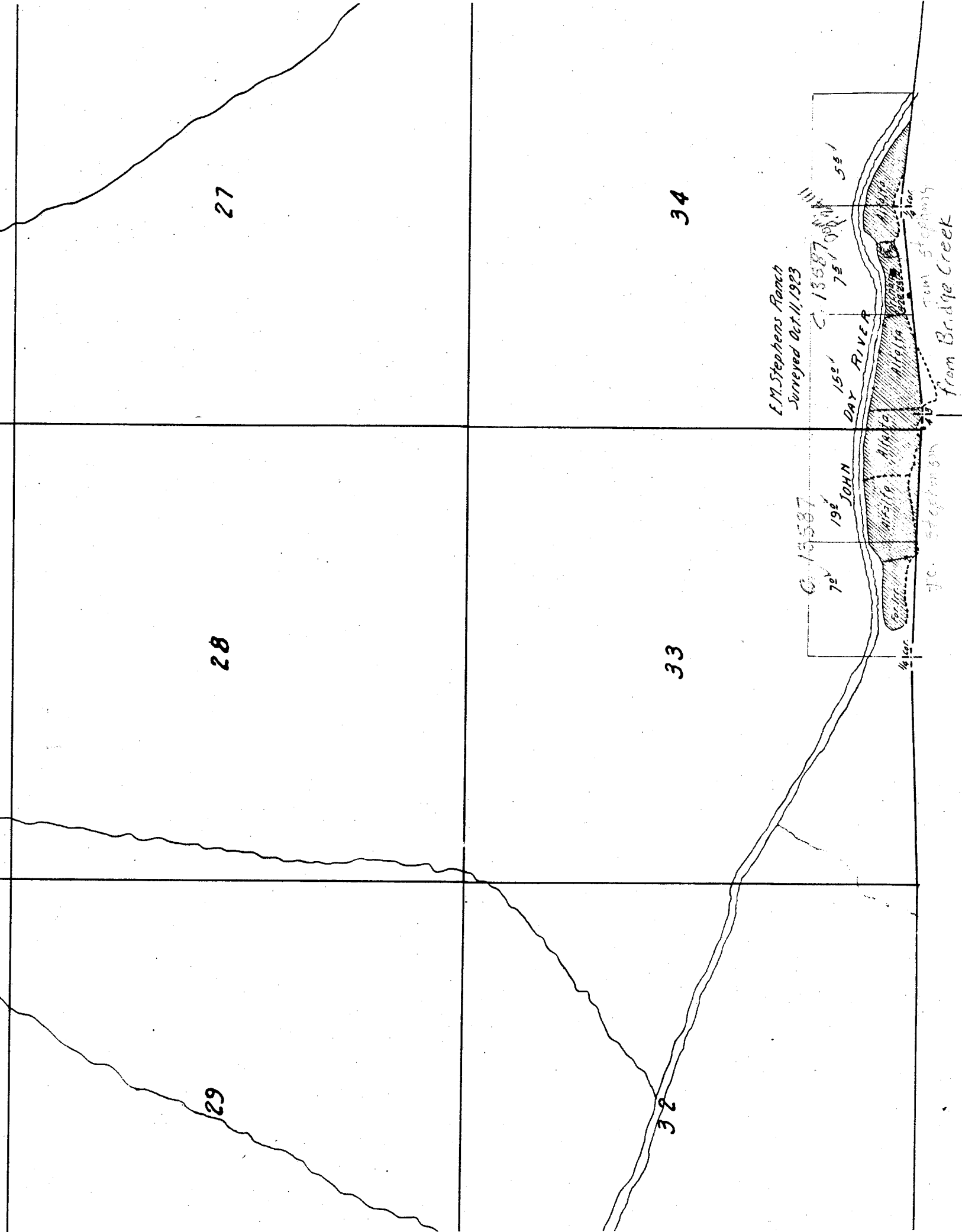
17

22

21

20





27

28

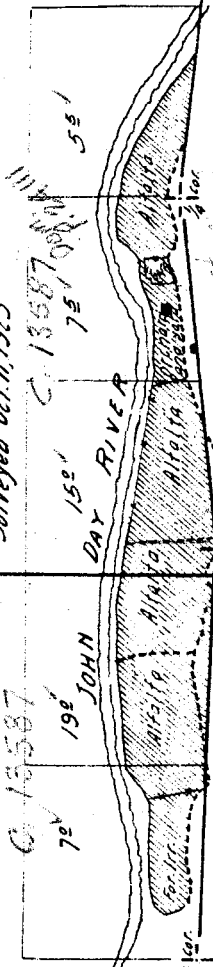
29

34

33

32

L.M. Stephens Ranch
Surveyed Oct. 11, 1923



C. 18587
72° 19'

192° JOHN

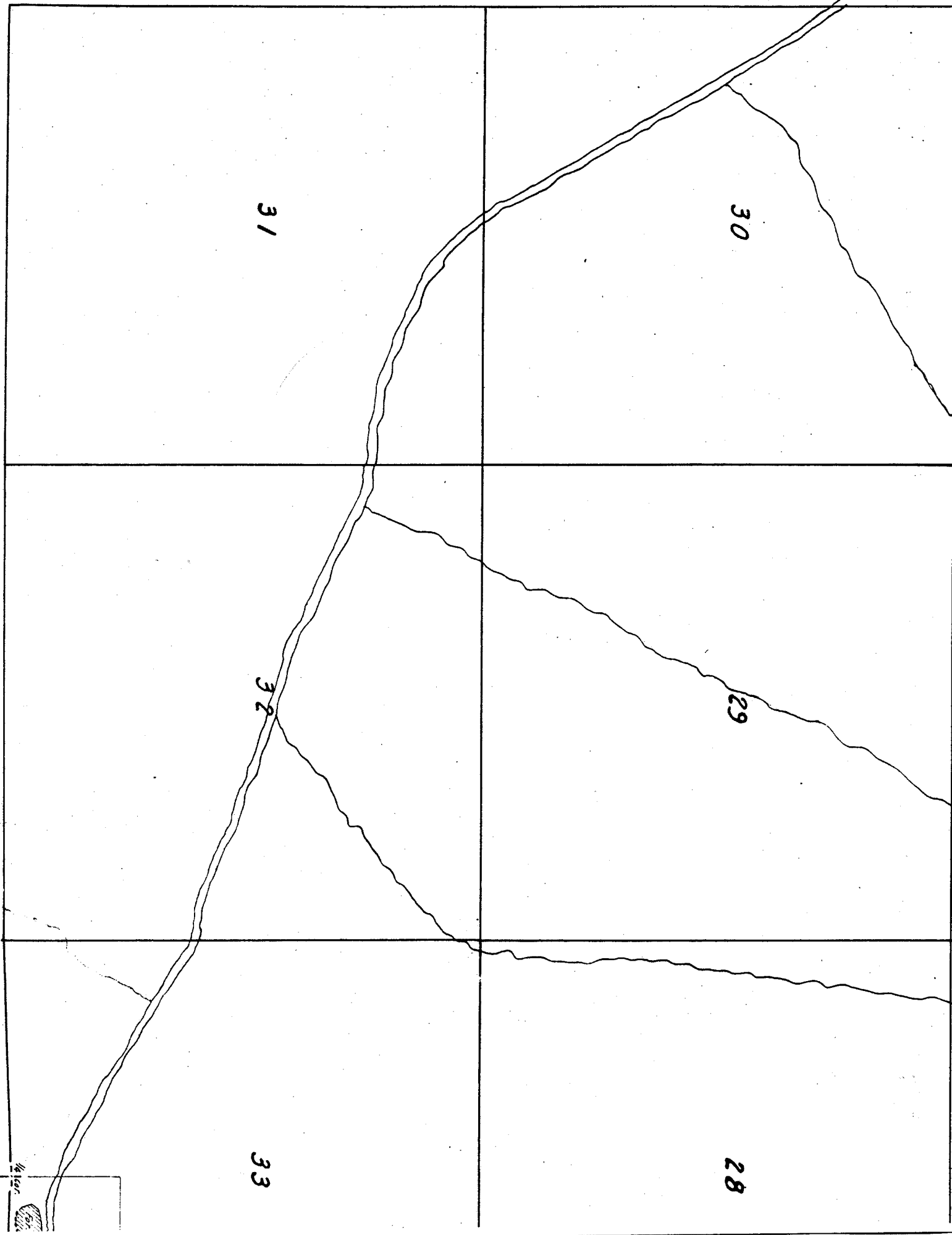
155° DAY RIVER

C. 18587
75° 10'

55'

Tom Stephens
from Bridge Creek

Tom Stephens



30

31

29

32

28

33



18

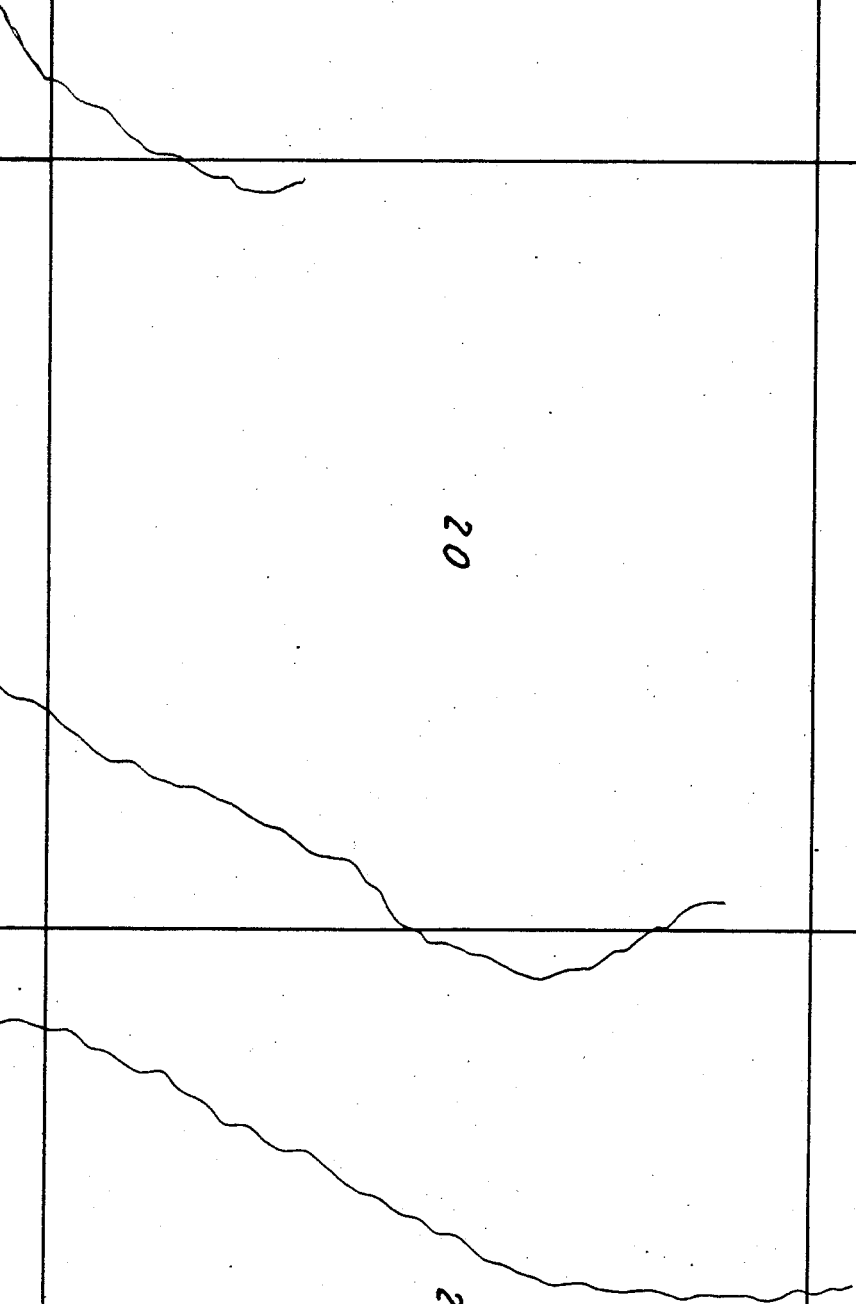
17

16

19

20

21



15

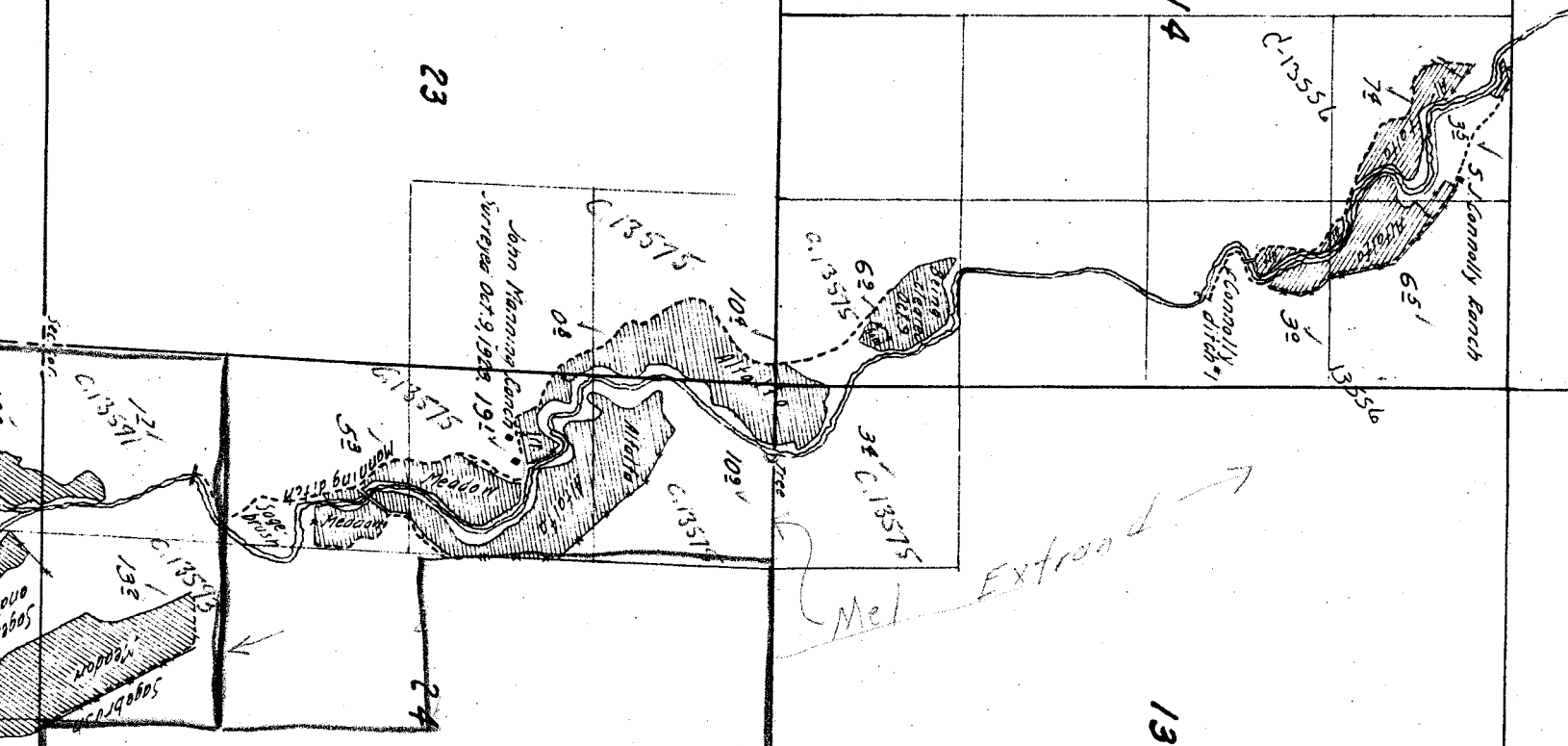
22

14

23

13

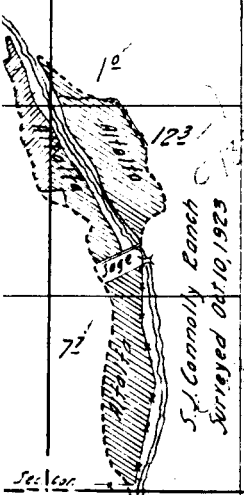
24



JOHN DAY RIVER

50' 2000' 00' 53' 172' 01'
From John Day 121

33
P24769



S.J. Connolly Ranch
Surveyed Oct 10, 1923

Mr. E. A. Strand

2

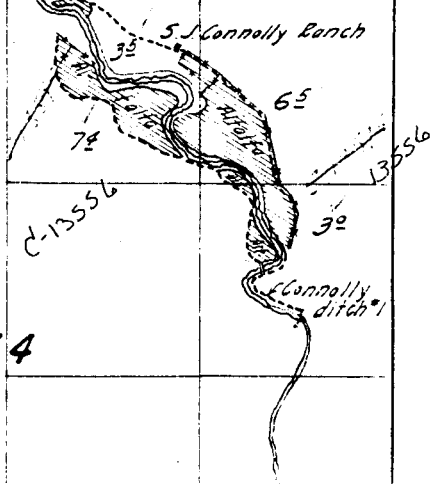
1

Connolly ditch #2

11

12

BRIDGE GREEN



S.J. Connolly Ranch

C-13556

C-13556

14

13

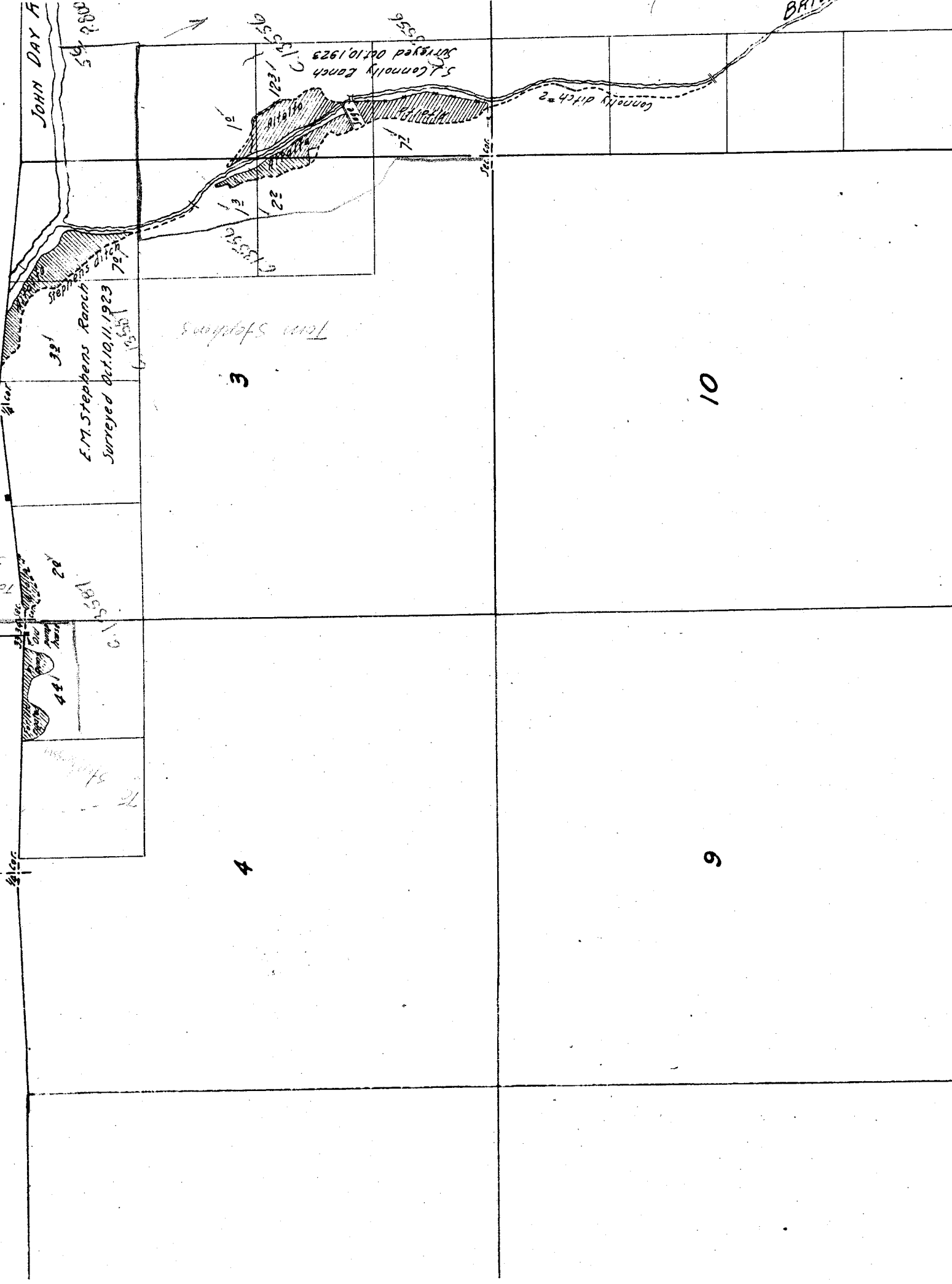
Connolly ditch #1

Township

10 S,

Range

20 E.



3

4

10

9

JOHN DAY A

E.M. Stephens Ranch
Surveyed Oct. 10, 1923

S. Connolly Ranch
Surveyed Oct. 10, 1923

Connolly ditch

BR

6

5

7

8

18

17

16

21

17

20

18

19

30

29

28

31

32

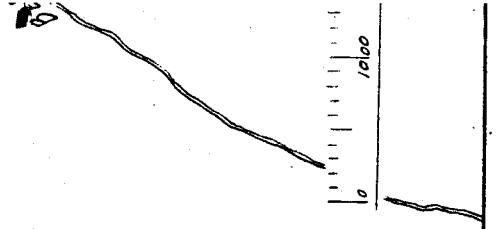
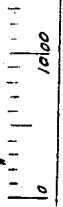
33

27

34

28

33



15

22

16

12