

2

13

24

14

23

15

22

27

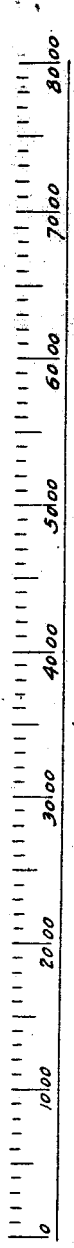
26

25

34

35

36



Scale of feet.

16

15

21

22

Township

10 S.

Range

21 E.

4

3

9

10

30

29

28

Sheep sheds

Ben Taylor Ranch
Surveyed Oct. 5, 8, 9, 1923

Sagebrush

104
135913

95

34

Sagebrush

BRIDGE CREEK

31

112
135912

228

01

Sagebrush

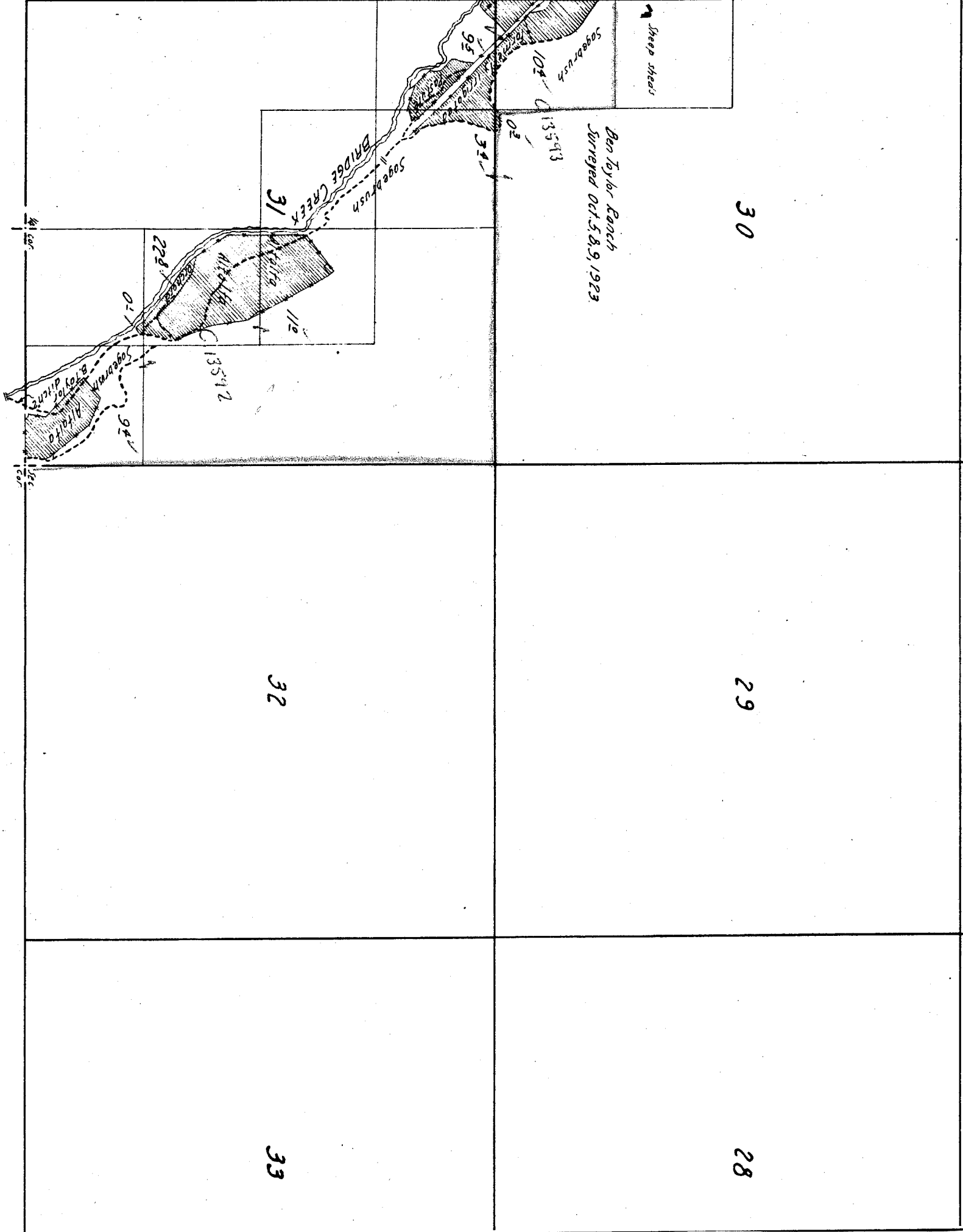
98

1/2
1/2

1/2
1/2

32

33



18

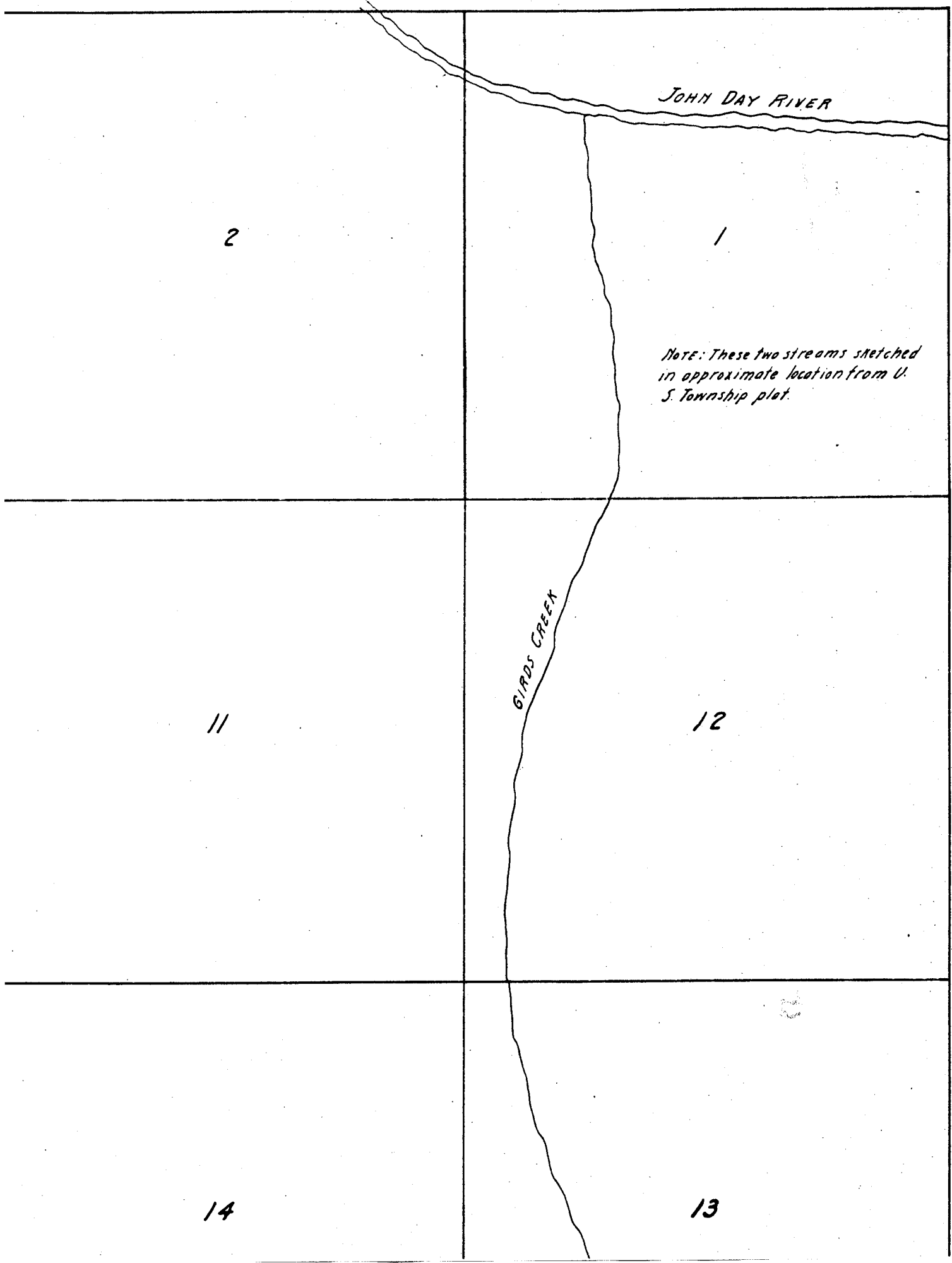
17

16

19

20

21



2

1

NOTE: These two streams sketched in approximate location from U. S. Township plat.

11

12

14

13

21

22

28

27

33

34

6

5

7

8

18

17

41 cor

Sec
cor

52
C. 13542

32

Sec 5
C. 13542

Ben Taylor Ranch
Surveyed Oct. 8, 9, 1923

6

96

22

5

20 1/2

42

02

05

122

42

22

92

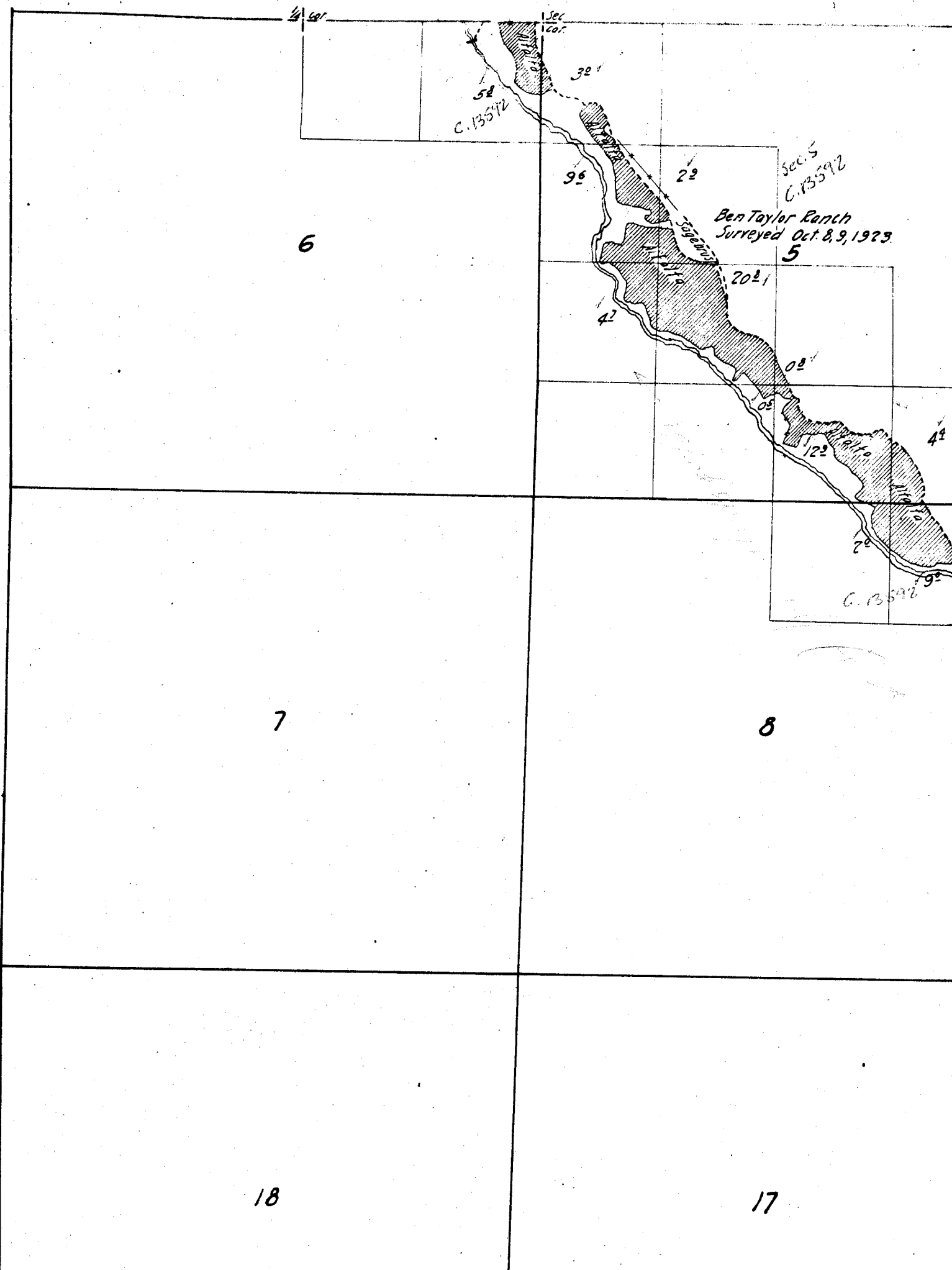
C. 13542

7

8

18

17



E.

6-1-1

2

1

11

12

14

13

22

Surveyed Nov. 3, 1923.
House
Flume
1/4 cor.

1st P. 5718
2nd P. 5718
Sec. cor.

L. L. Jones Ranch
Surveyed Nov. 8, 9, 1923.

28

27

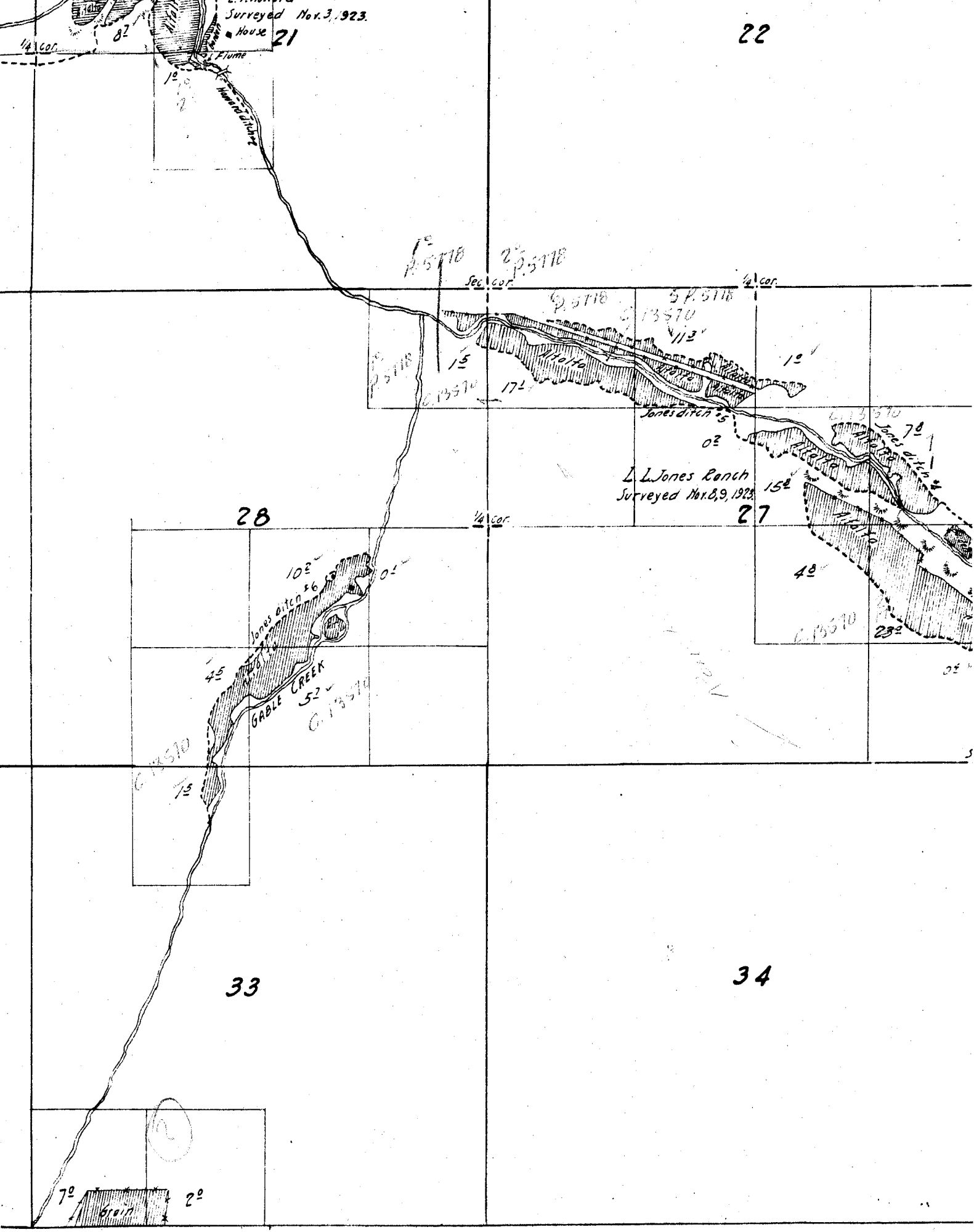
Jones ditch #6
10⁰
16
10⁰
45
GABLE CREEK
52
C. 13570

17⁰

33

34

7⁰
6⁰
2⁰

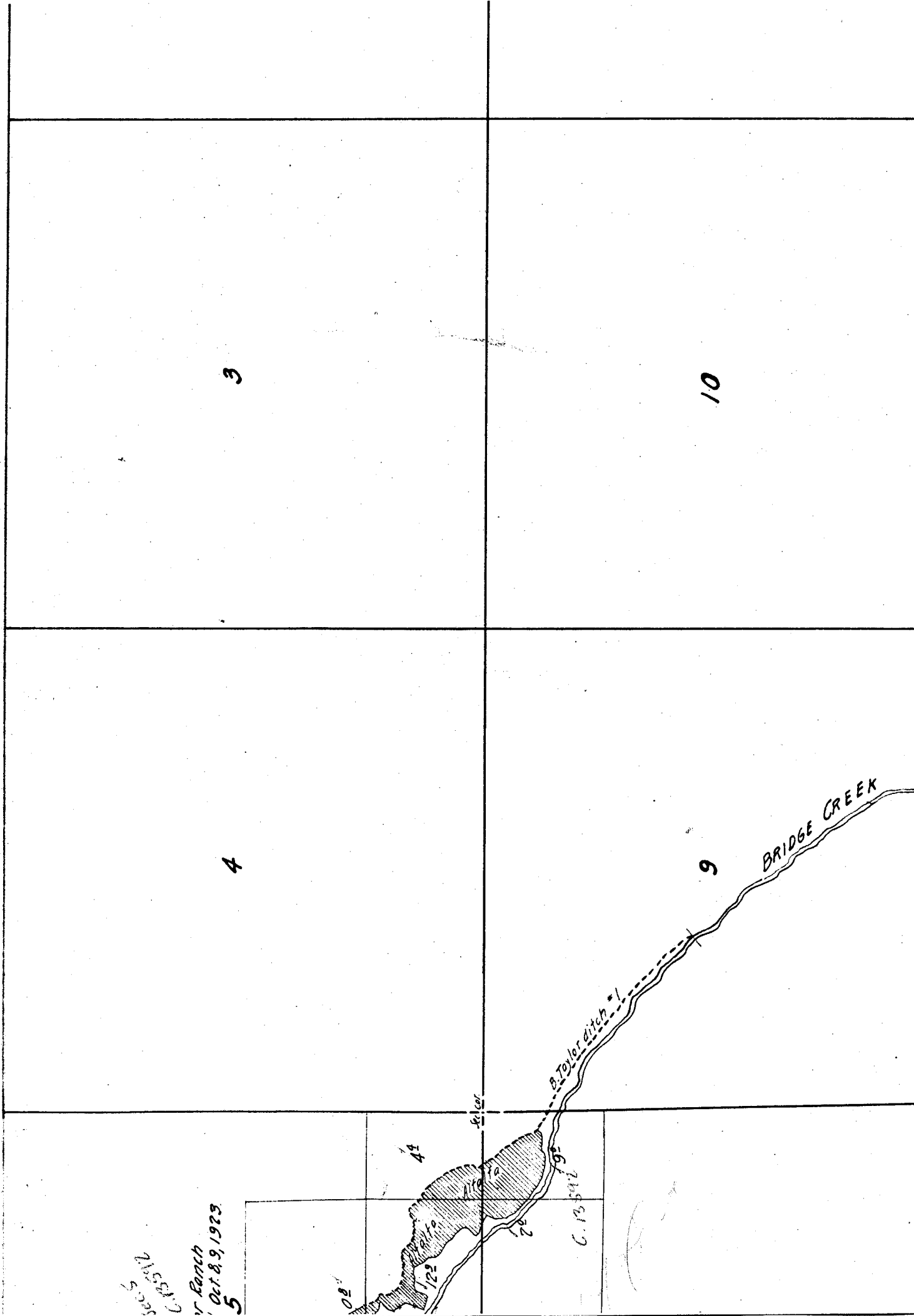


Township

11 S,

Range

21 E.



Sec 5
13592
V. Ranch
Oct. 8, 9, 1923
5

122
121
120
119
118
117
116
115
114
113
112
111
110
109
108
107
106
105
104
103
102
101
100
99
98
97
96
95
94
93
92
91
90
89
88
87
86
85
84
83
82
81
80
79
78
77
76
75
74
73
72
71
70
69
68
67
66
65
64
63
62
61
60
59
58
57
56
55
54
53
52
51
50
49
48
47
46
45
44
43
42
41
40
39
38
37
36
35
34
33
32
31
30
29
28
27
26
25
24
23
22
21
20
19
18
17
16
15
14
13
12
11
10
9
8
7
6
5
4
3
2
1
C. 13592

BRIDGE CREEK

B. Taylor ditch #1

E. car

3

10

4

9

15

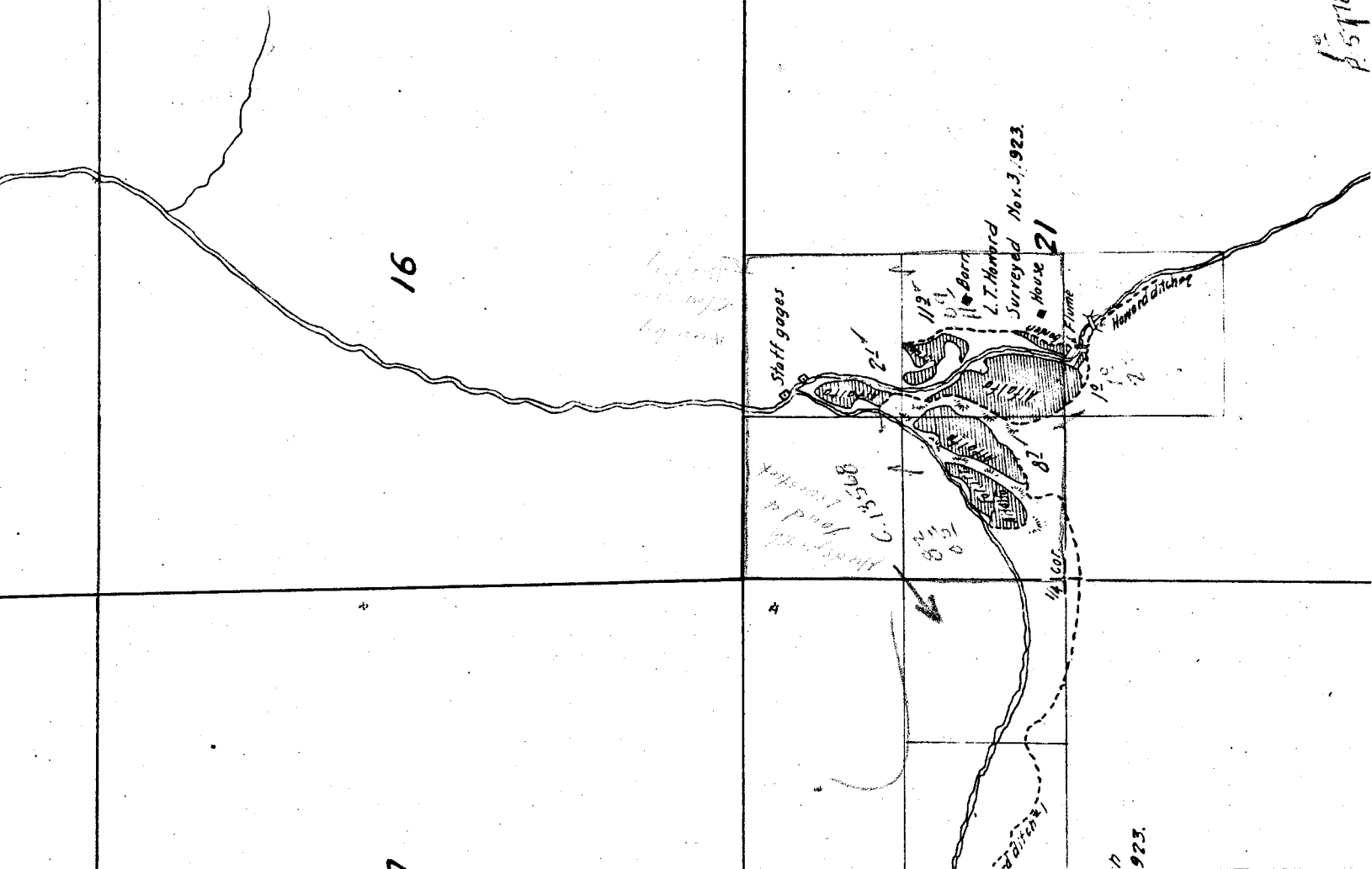
22

Note: Creeks partly sketched in approximate location from U.S. Township plot.

16

2° 57' 18"

105° 57' 18"



Handwritten note: L.T. Howard Surveyed Nov. 3, 1923

Stiff gages

L.T. Howard Surveyed Nov. 3, 1923

House 21

923

13

24

14

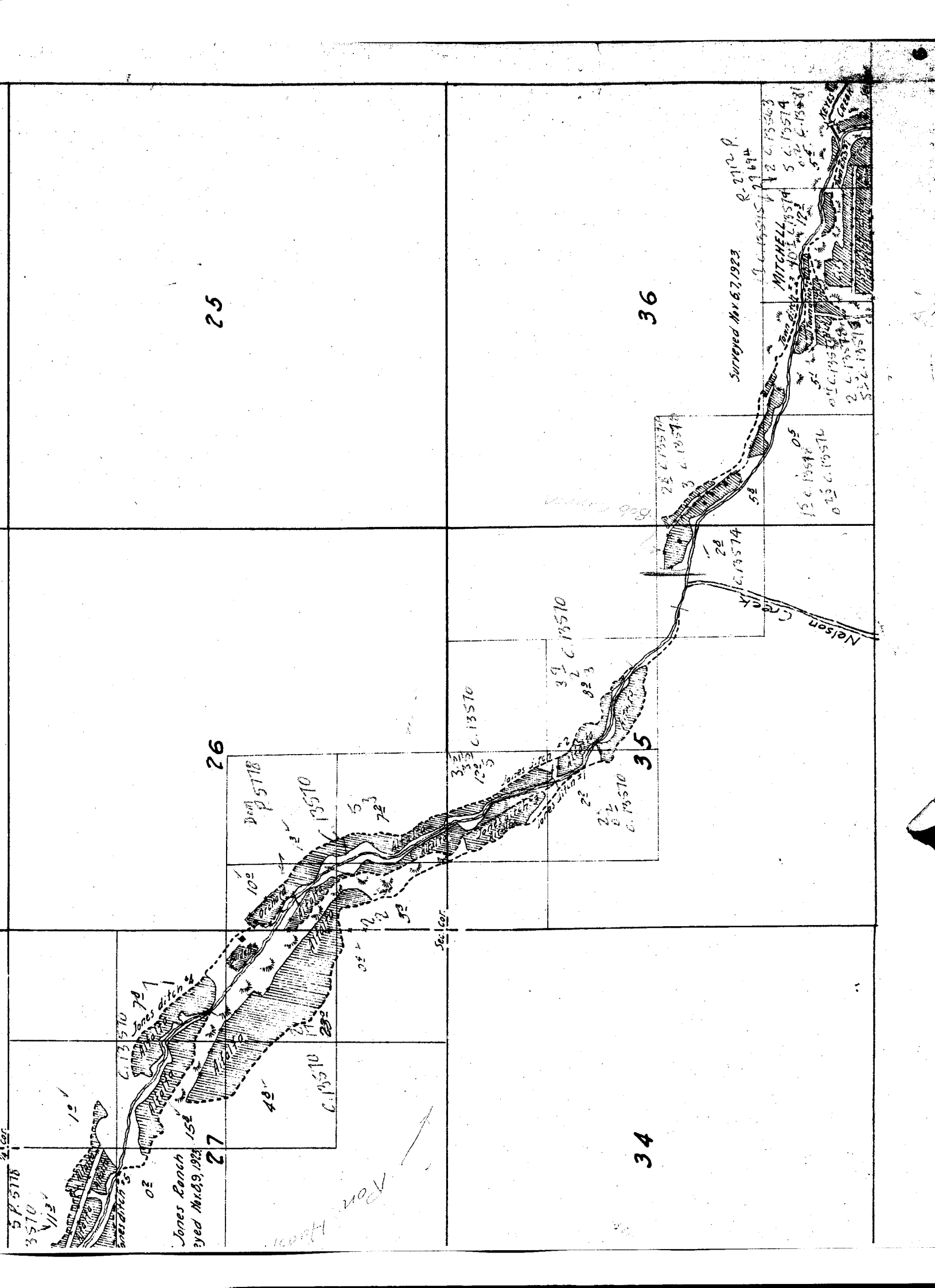
23

15

22

*'s partly sketched in approximate
from U.S. Township plot.*

41.60
58 5776



25

36

26

35

27

34

5 P. 5718
3570
113
Jones Ranch
Surreyed Mar 29, 1923

Surreyed Mar 6, 1923
R-212 P.
19 C. 19574
2 C. 19574
5 C. 19574
10 C. 19574
15 C. 19574
20 C. 19574
25 C. 19574
30 C. 19574
35 C. 19574
40 C. 19574
45 C. 19574
50 C. 19574
55 C. 19574
60 C. 19574
65 C. 19574
70 C. 19574
75 C. 19574
80 C. 19574
85 C. 19574
90 C. 19574
95 C. 19574
100 C. 19574

MITCHELL

Nelson Creek

From House

X 10 4335

30

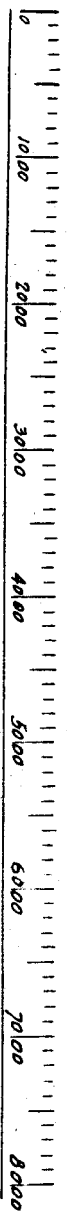
29

28

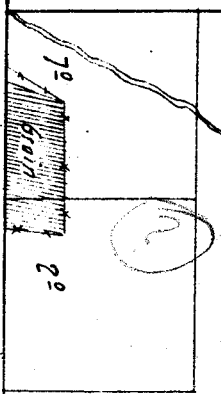
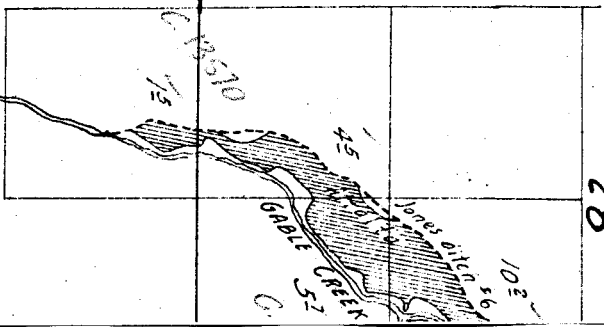
31

32

33



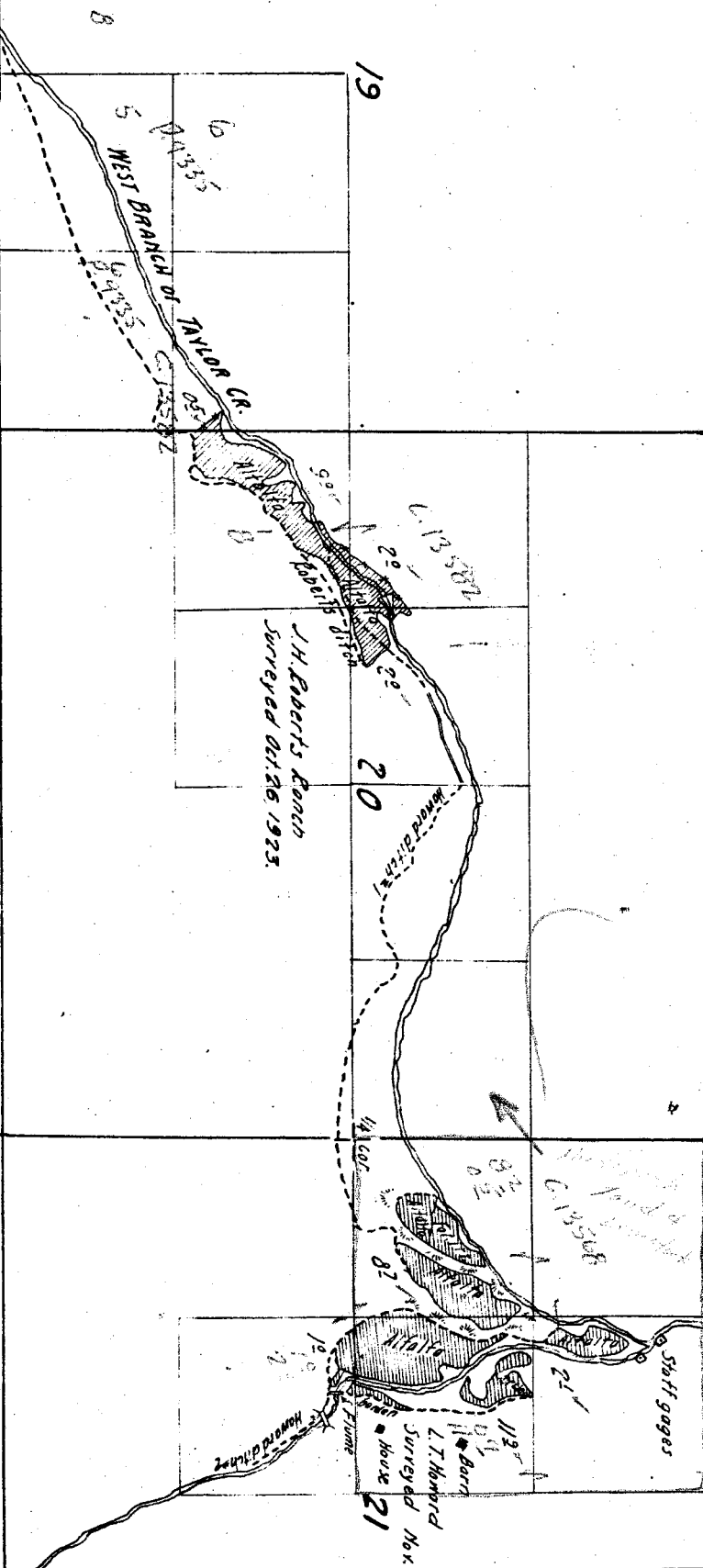
Scale of feet



18

17

16



19

20

21

8

6
135.5'

WEST BRANCH of TANKER CR

H. Roberts Ranch
Surveyed Oct. 26, 1925.

S 90° 15' W
135.5'

20
20
20

Round ditch

14.60'

Staff gages
C. 18508

L. Thoburn
house
Surveyed Nov

N 82° 15' W
119.5'

Round ditch