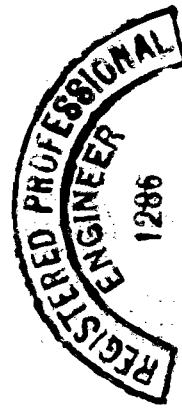


**DOWSTREAM ELEVATION OF DAM**  
Scale: 1" = 5'

I, C. F. Bessee, of Marshfield, Oregon, do hereby certify that this map was made from notes taken during an actual survey made by me on the 20th day of March, 1939, and that it correctly represents the layout of the dam and reservoir as already existing as a settling basin on the water rights originally granted to Gunder Gunderson and transferred to the Glasgow Water Association.

C. F. Bessee.

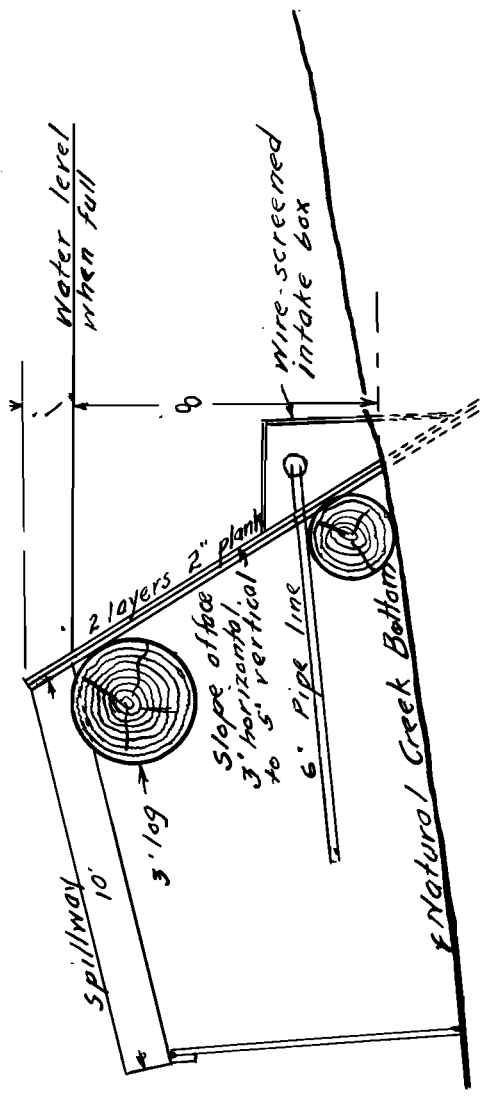


C. F. Bessee

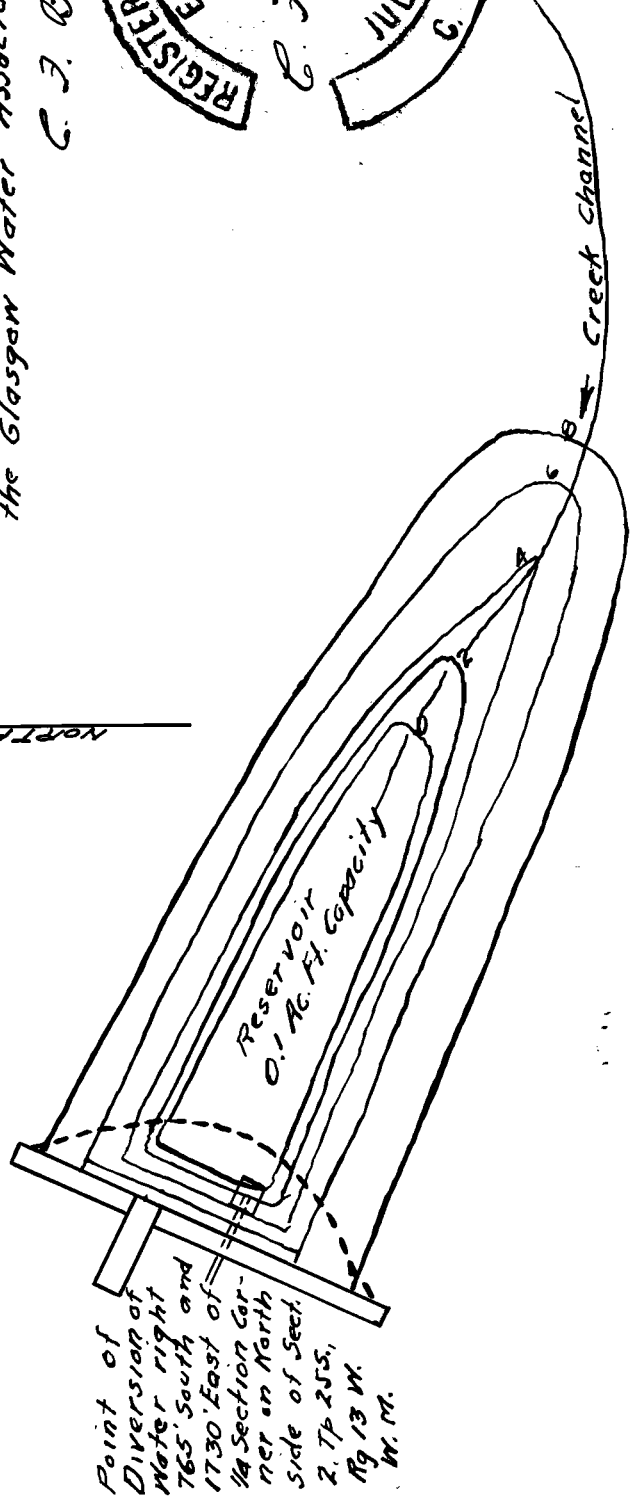
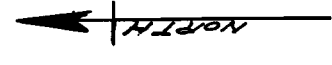


**PLAN ACCOMPANYING APPLICATION OF  
GLASGOW CO-OPERATIVE WATER ASSOCIATION  
FOR A RESERVOIR PERMIT  
ON AN UN-NAMED CREEK IN  
NE 1/4 NE 1/4 OF SECTION 2, TP. 25 S., RG. 13 W., W.M.**

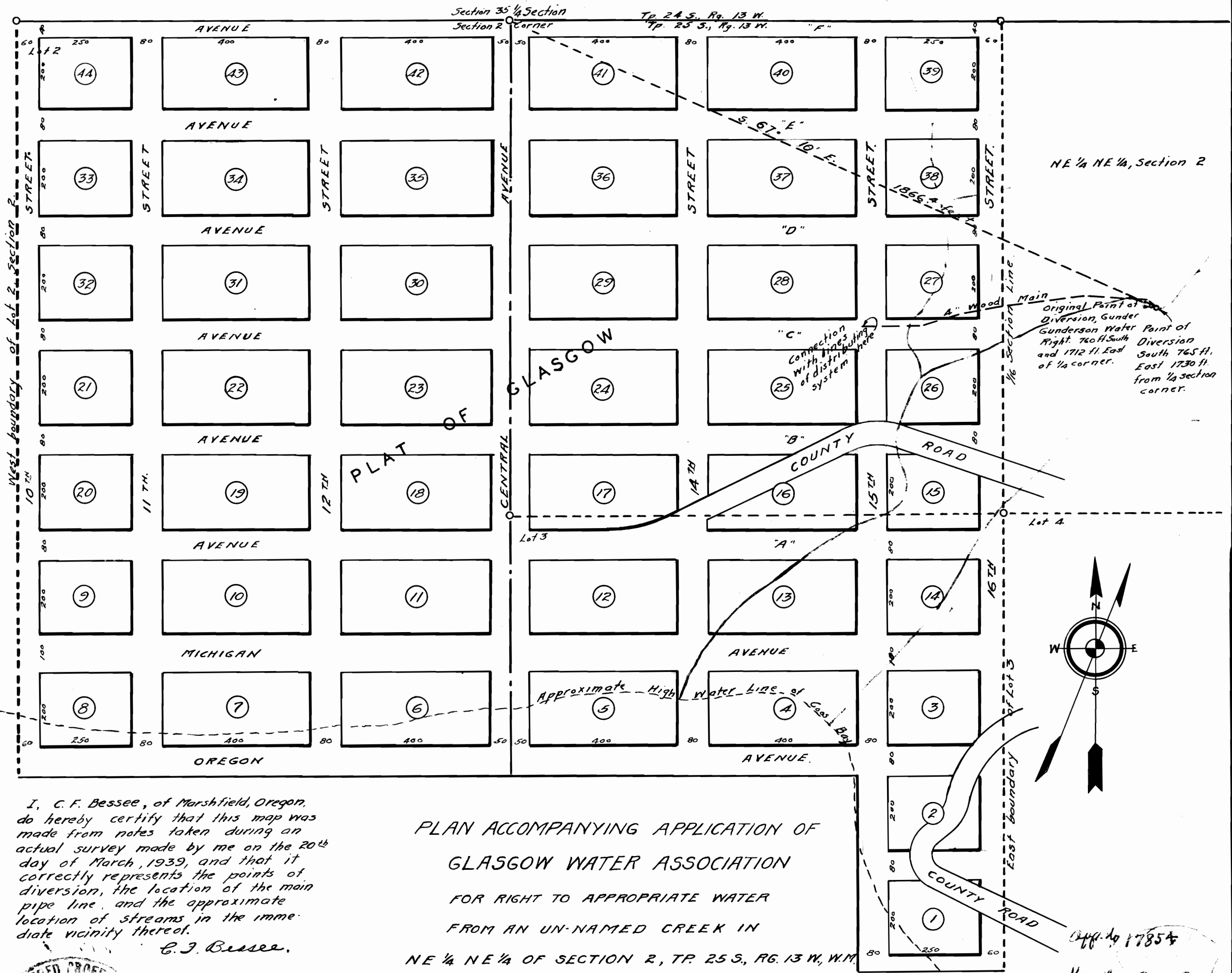
Application No. A-1856  
Permit No. A-777



**CROSS-SECTION OF DAM**  
Scale: 1" = 5'



**PLAN OF RESERVOIR**  
LOCATED IN NE 1/4 NE 1/4, SECTION 2,  
TWP. 25 SOUTH, RGE. 13 WEST, W.M.  
Scale: 1 inch = 20 feet.



I, C. F. Bessee, of Marshfield, Oregon, do hereby certify that this map was made from notes taken during an actual survey made by me on the 20th day of March, 1939, and that it correctly represents the points of diversion, the location of the main pipe line, and the approximate location of streams in the immediate vicinity thereof.

C. F. Bessee.

PLAN ACCOMPANYING APPLICATION OF  
GLASGOW WATER ASSOCIATION  
FOR RIGHT TO APPROPRIATE WATER  
FROM AN UN-NAMED CREEK IN  
NE 1/4 NE 1/4 OF SECTION 2, TP. 25 S., RG. 13 W., W.M.  
AND FOR TRANSFER OF GUNDER GUNDERSON  
WATER RIGHT ON SAME STREAM.

SCALE: 1 INCH = 200 FEET.



App. No. 17854

Vol. No. 13509

App. No. 18521  
Grant 130744