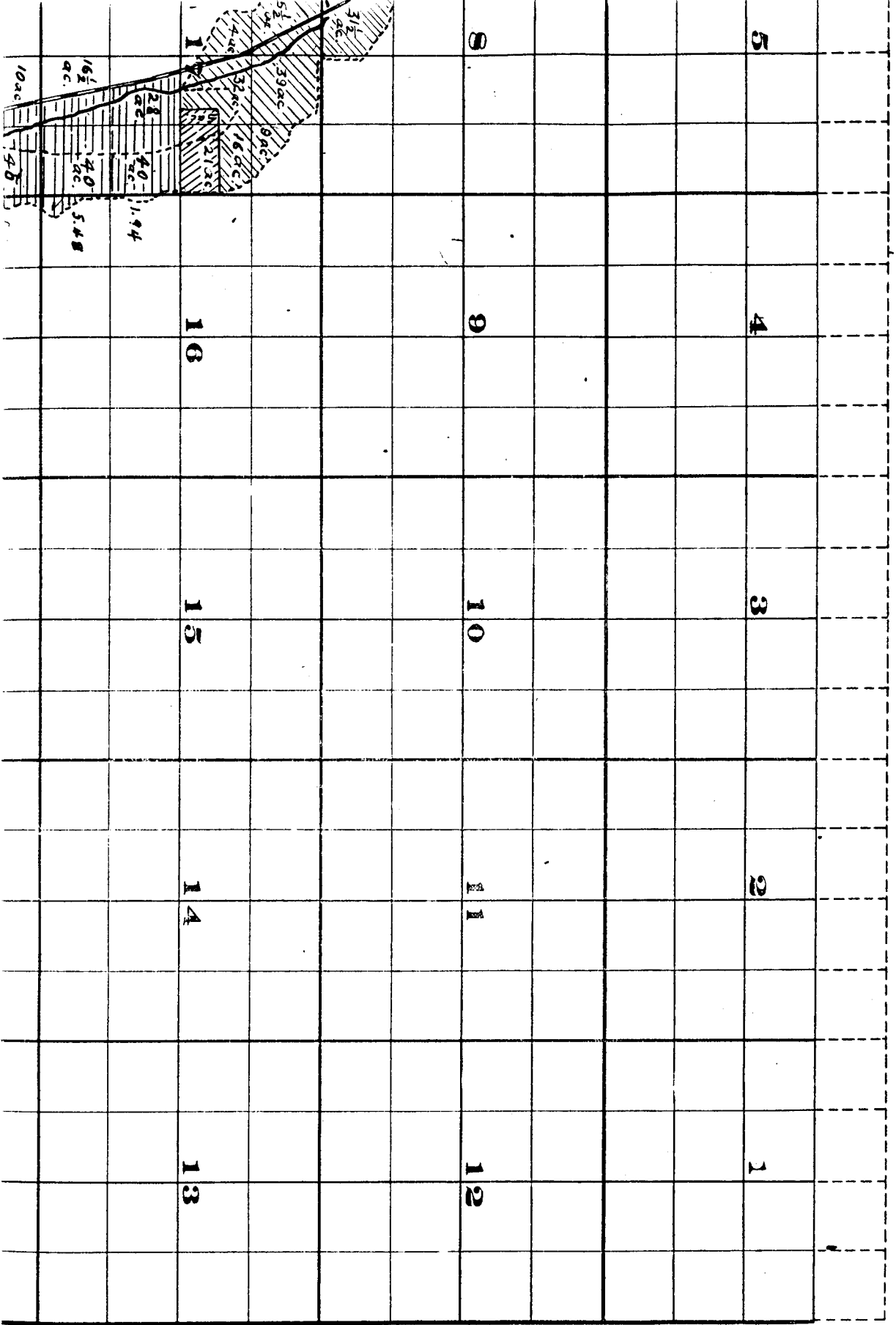
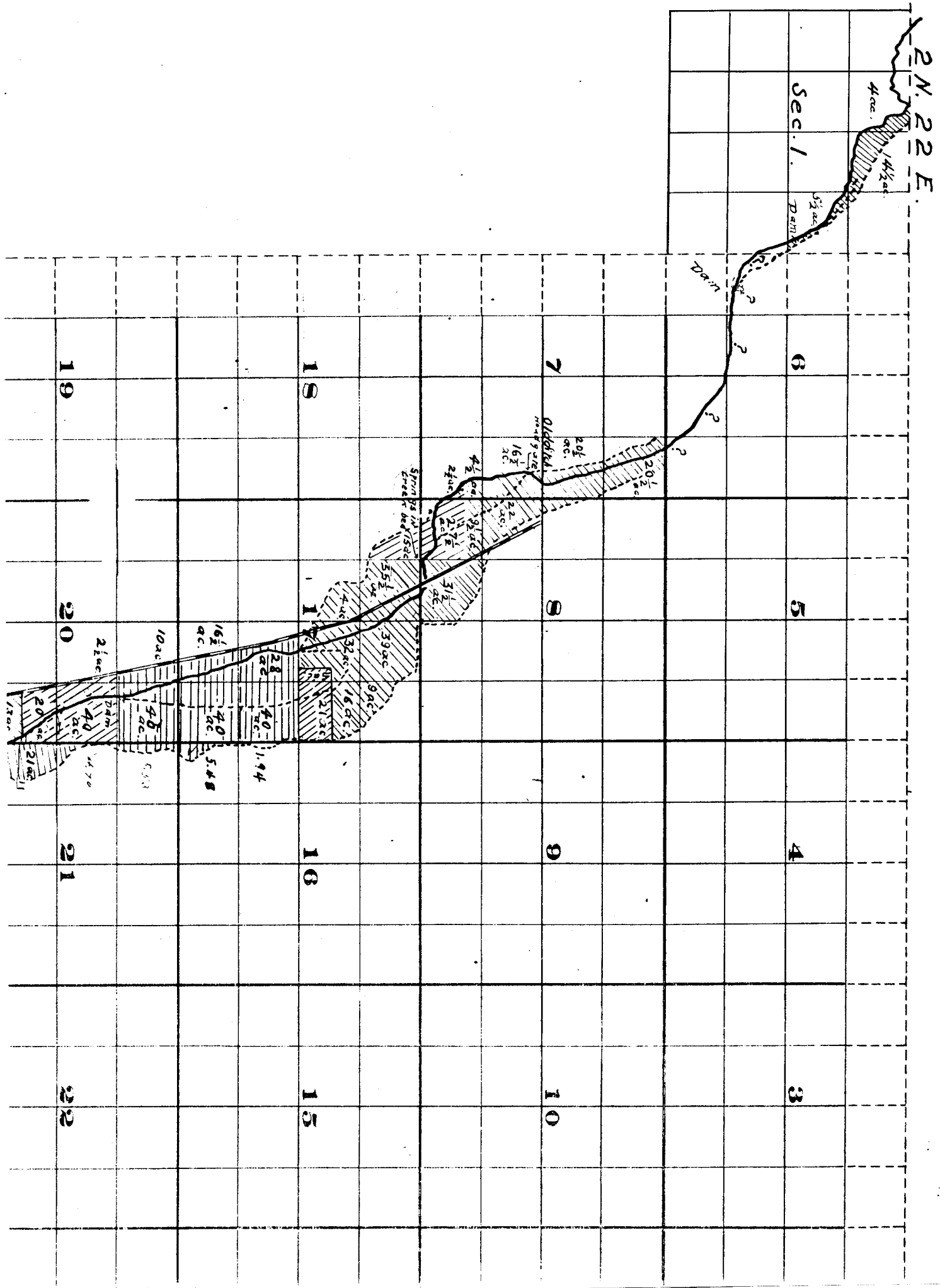


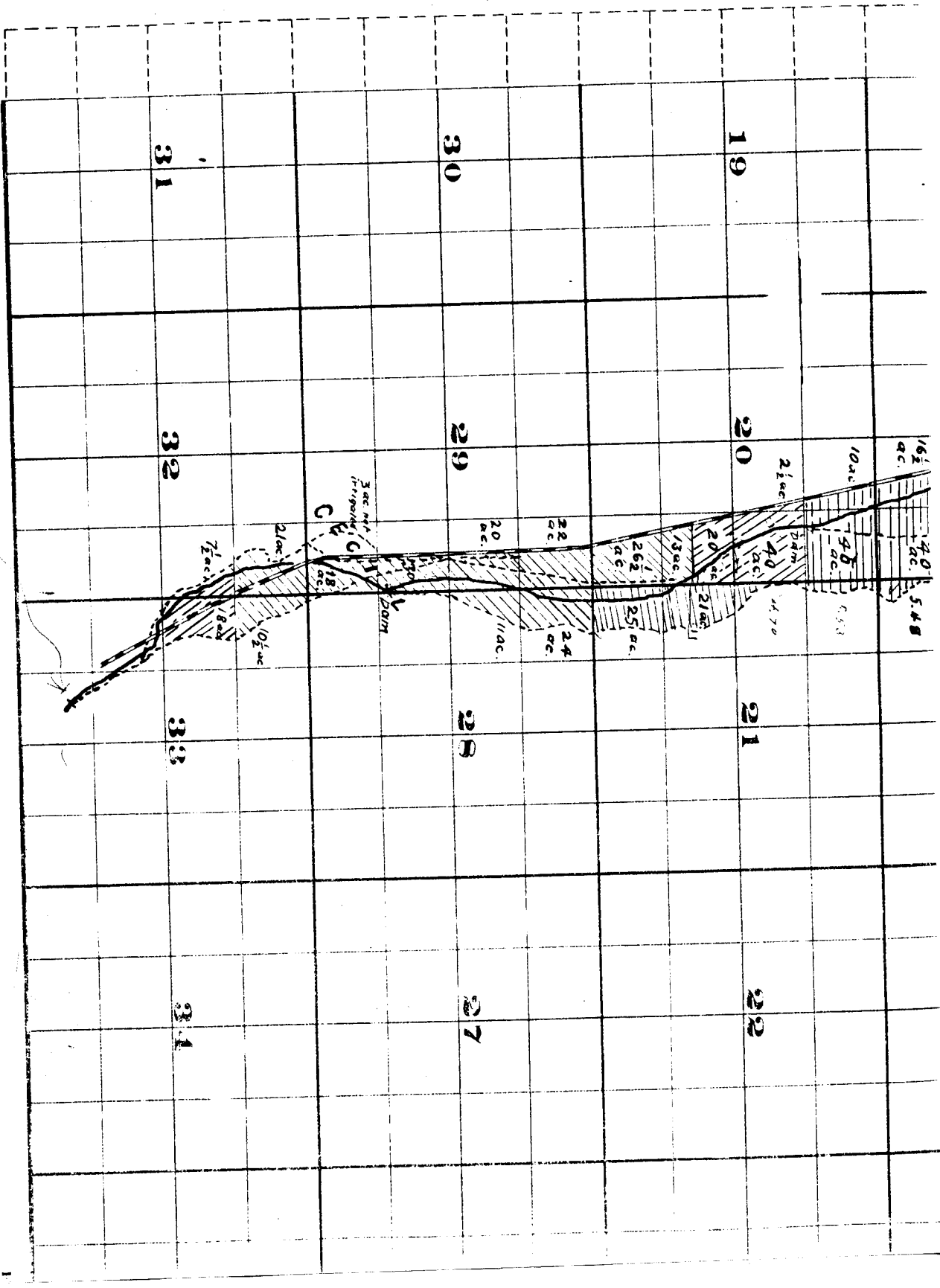
Ship 2 N. , Range 23 E.W.M.



Township 2 N. , Range



WILKINSON, CO. PATENT SQUARE RULES - PATENTED 1870

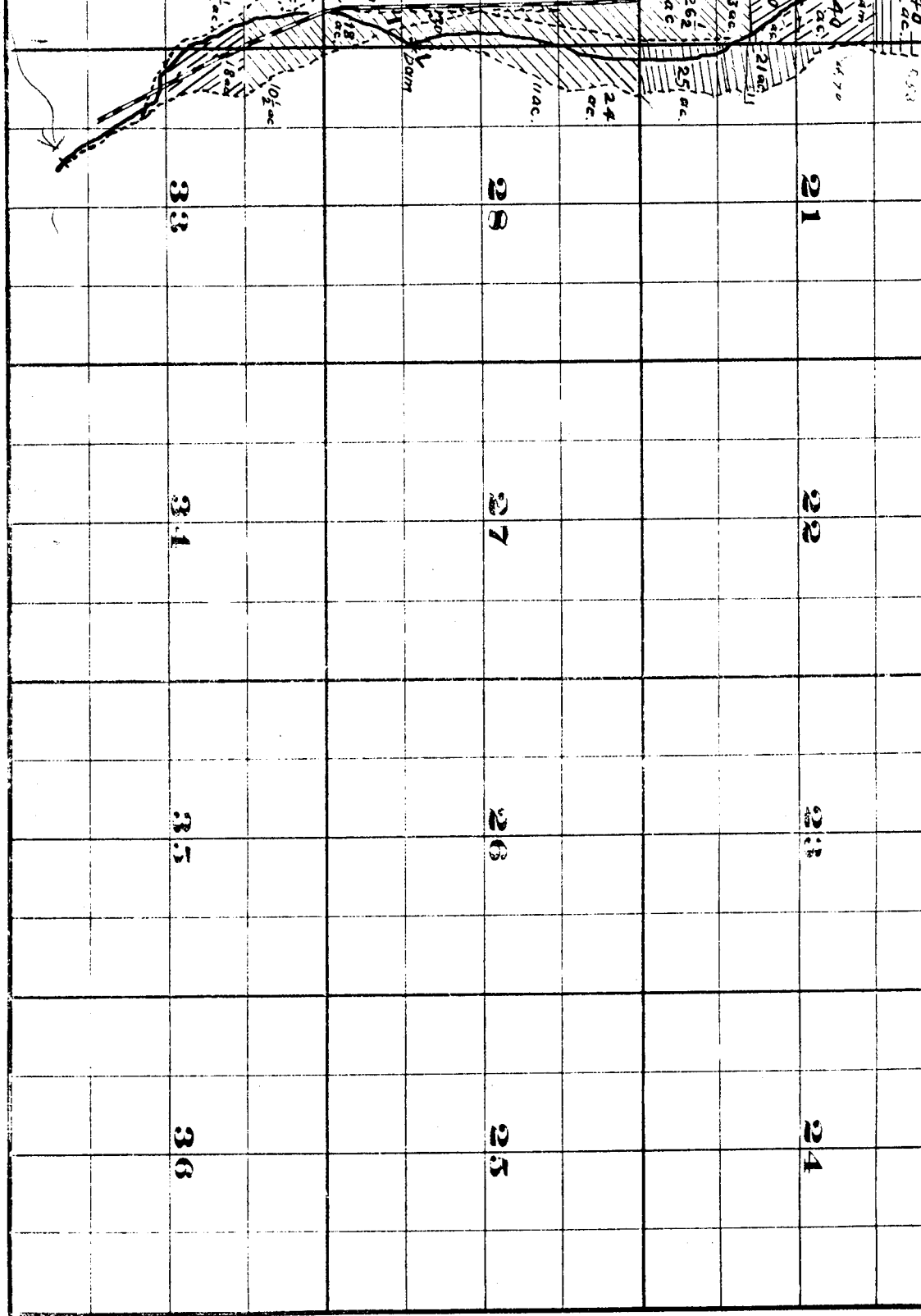


Surveyed by H.K. Donnelly July 1909.

John H. Lewis - State Engineer.

Examined July 14, 1909.

Willie



FRONT OFFICE OF THE STATE ENGINEER, SEASIDE, OREGON

Willow Creek Adjudication.

July 1909.
Engineer.
July 14, 1909.

2 N. 22 E.
 2 N. 23 E.