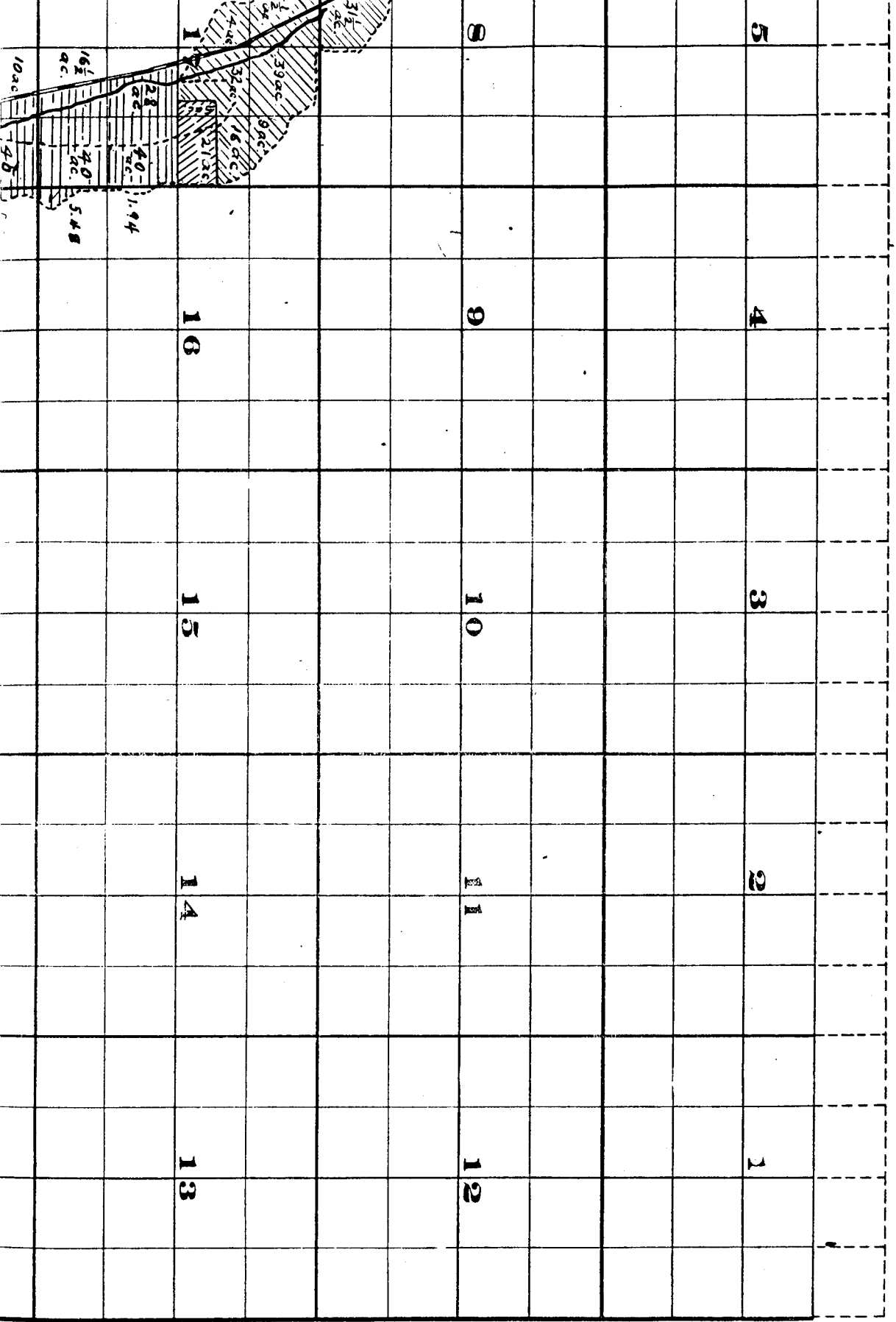


Ship

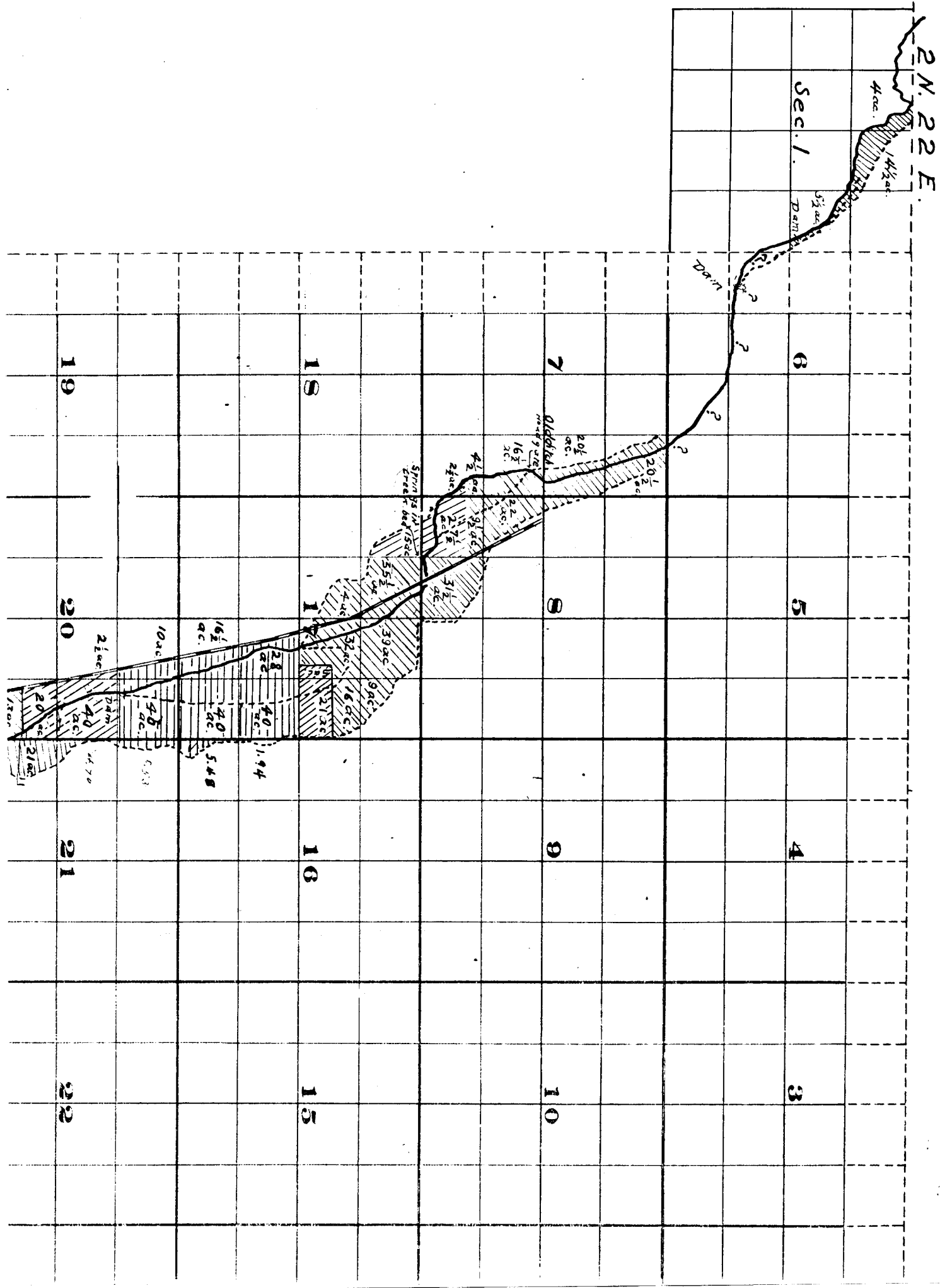
2 N.

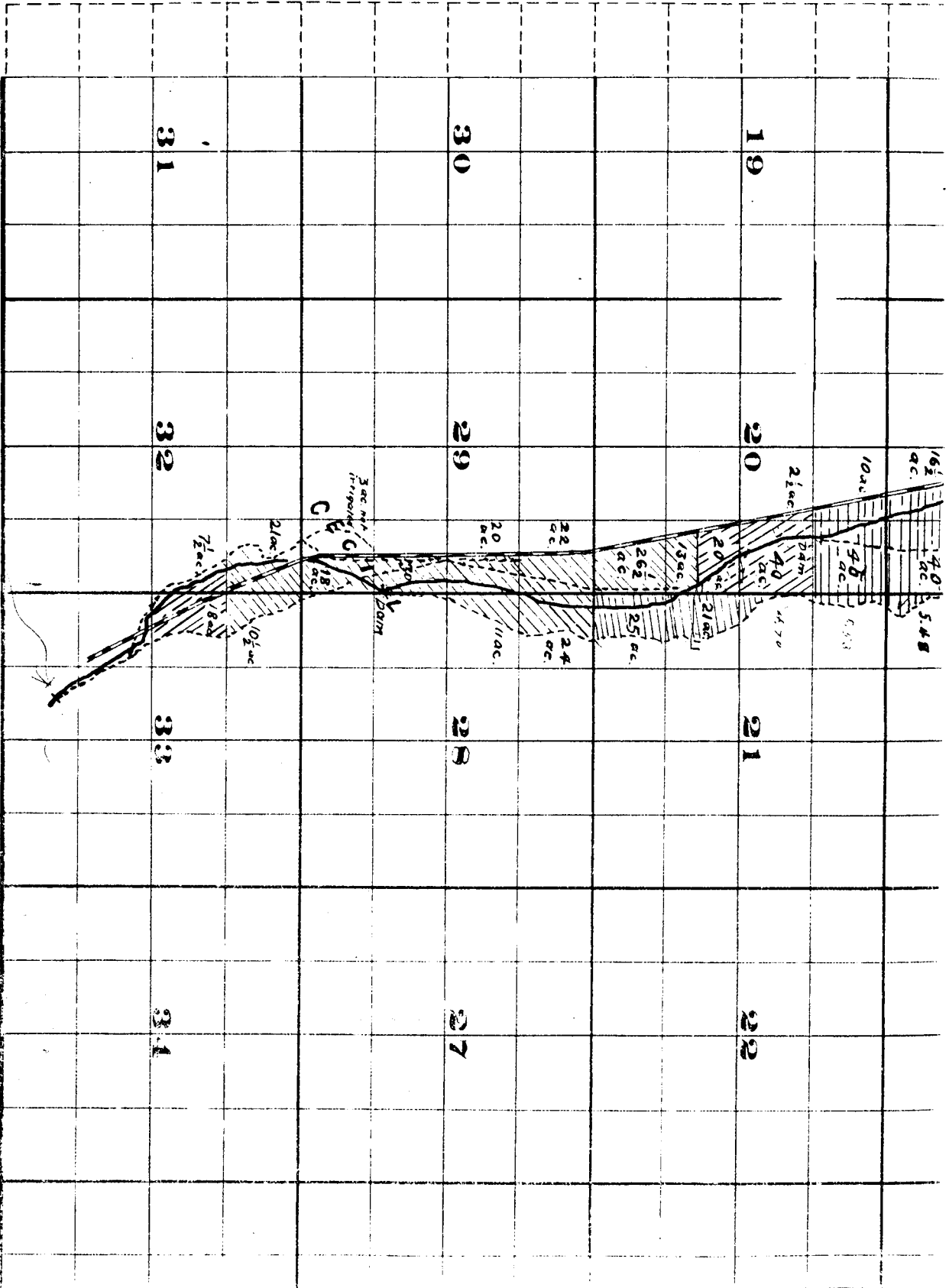
Range

23 E.W.M.



Township 2 N. , Range





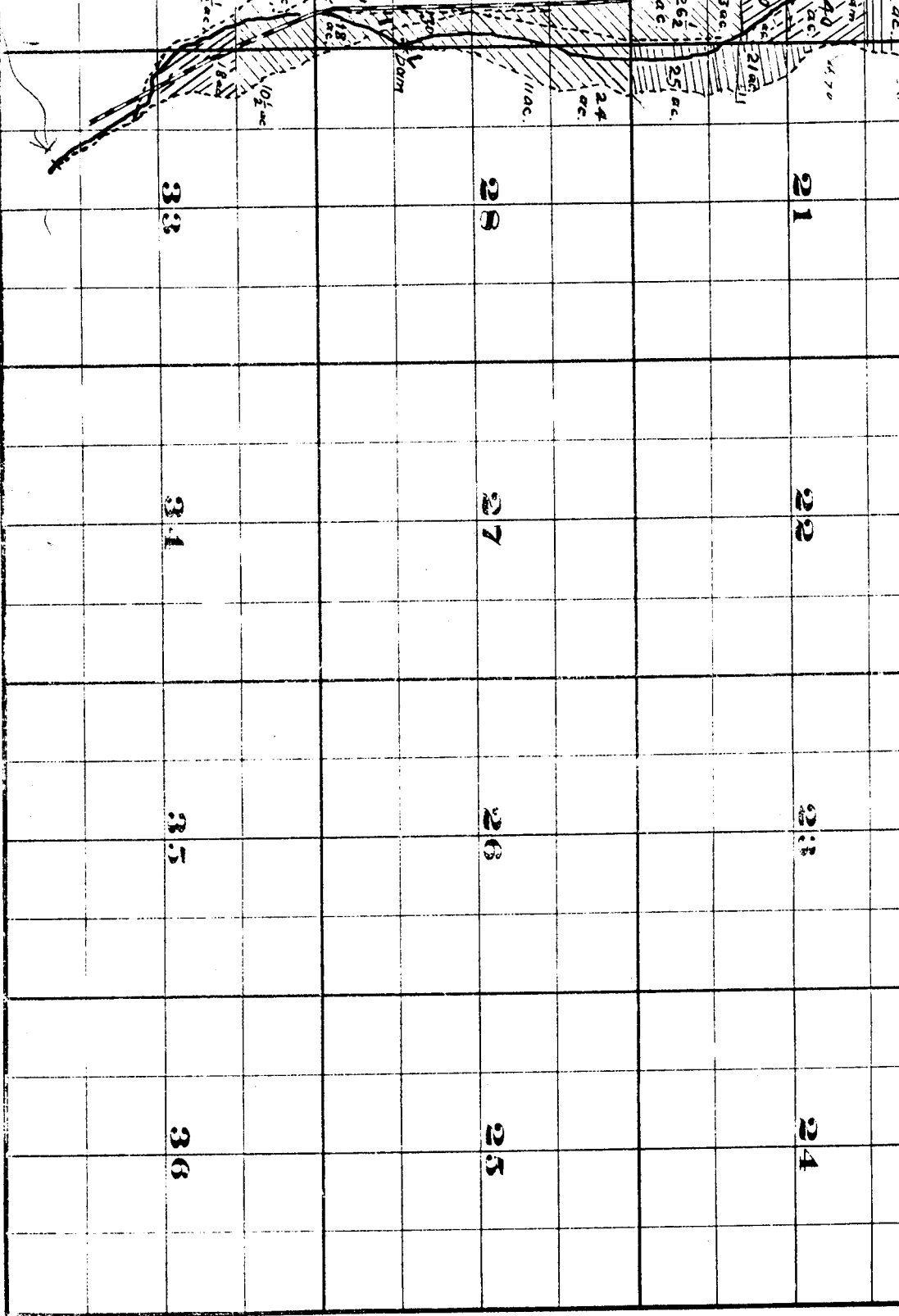
PLATTENBERG CO. SURVEYORS & ENGINEERS, CHICAGO, ILL.

Surveyed by H.K. Donnelly July 1909.

John H. Lewis - State Engineer.

Examined July 14, 1909.

Will



FROM OFFICE OF THE SURVEY ENGINEER, SEASIDE, OREGON

Willow Creek Adjudication.

July 1909.

the Engineer.

July 14, 1909.

2 N. 22 E.
2 N. 23 E.