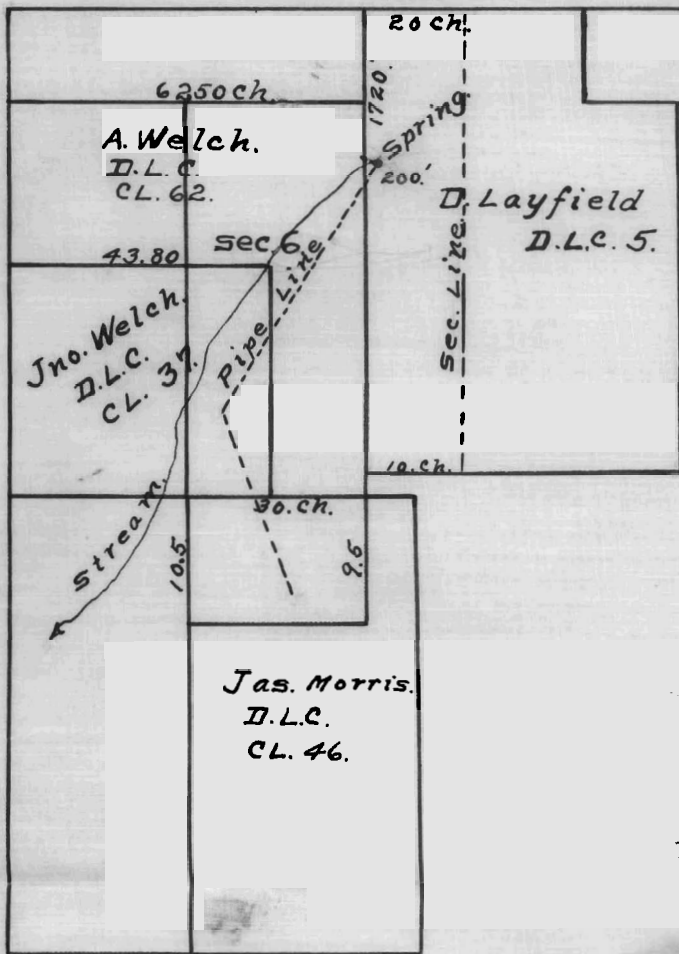


TWP 3. S. R. 2 W. W. M.



OFFICE OF STATE ENGINEERS
RECORDED
AUG 22, 1911.

Application No. 1641.
Claim No.

OFFICE OF STATE ENGINEERS
RECEIVED
AUG 22 1911
TWP

Application No. 1641
Unit No. 903

I C.F. Ashford of Portland Oregon do hereby
certify that this Map was made from notes taken
during an actual survey made by Me on August
18th 1911. and that it correctly represents the works
described in the accompanying application, together
with the location of all streams and other ditches
in the immediate vicinity.

C.F. Ashford

Surveyor.