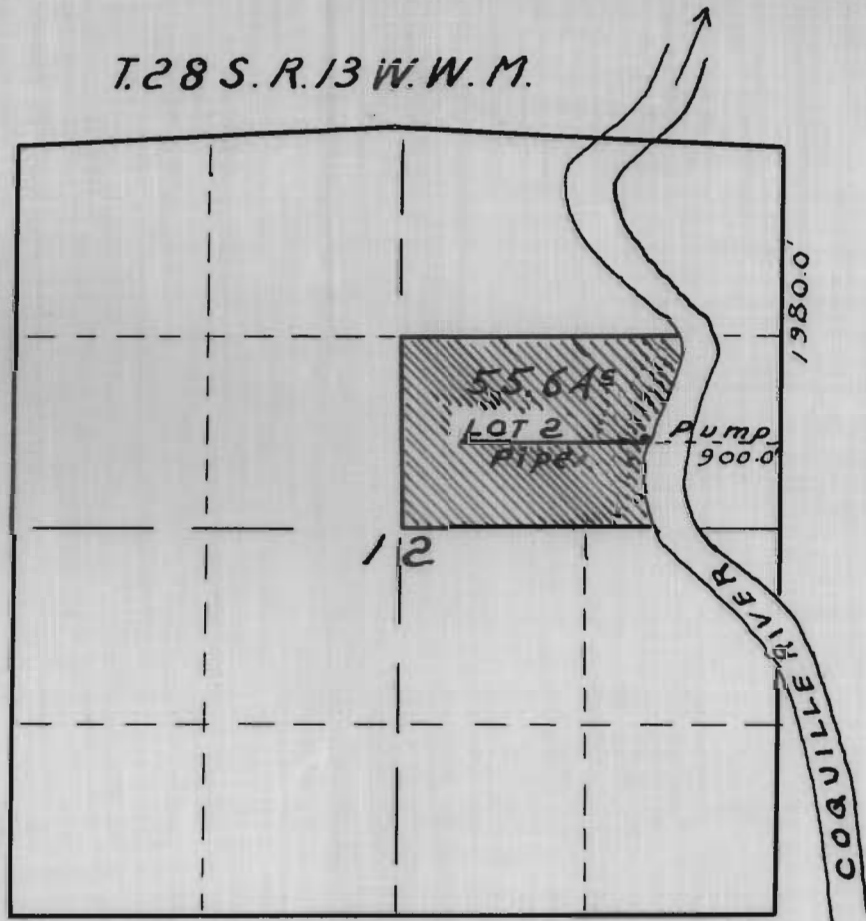


T.28 S. R.13 W. W. M.



Map accompany
application of

W. E. CROSS

to appropriate water.

I, J. N. Gearhart, of Myrtle Point, Oregon, do hereby certify that this map was made from the Assessor's map which map was made from notes taken during an actual survey and that it correctly represents the works described in the accompany^{ing} application, together with the location of streams and other ditches in the immediate vicinity.

Dec. 16, 1936.

J. N. Gearhart

Application No. 16730

No. 183.

Permit No. 12514

17-11-16730 *OK*