

T. 11 S. R. 21 E.

T. 11 S. R. 22 E.

Bridge Creek

Range Line

MITCHELL.

Keys Cr.

Township Line

Hollow

Orchard

18 95' R. 3/4 corner
N. 68° W. - 15.00 To Sasser Orchard Fence

N. 63 1/2° W. - 7.53

Reservoir 60x60' Fence

N. 32° W. - 10.12
N. 40° W. - 5.19

N. 40° W. - 4.64
N. 32 1/2° W. - 7.57

T. 12 S. R. 21 E.

N. 32 1/2° W. 80.00 - 3/4

T. 12 S. R. 22 E.

N. 18° W. - 77.12

N. 10 1/2° W. - 70.62

N. 4 3/4° W. - 60.75

N. 4 3/4° W. - 59.32

N. 4 1/2° W. - 50.32

N. 3 1/4° W. - 39.67

N. 17° W. - 33.92

N. 15 1/2° W. - 23.48

N. 13° W. - 18.95

N. 14° W. - 17.48

N. 30° W. - 5.28

N. 68 1/2° E. -

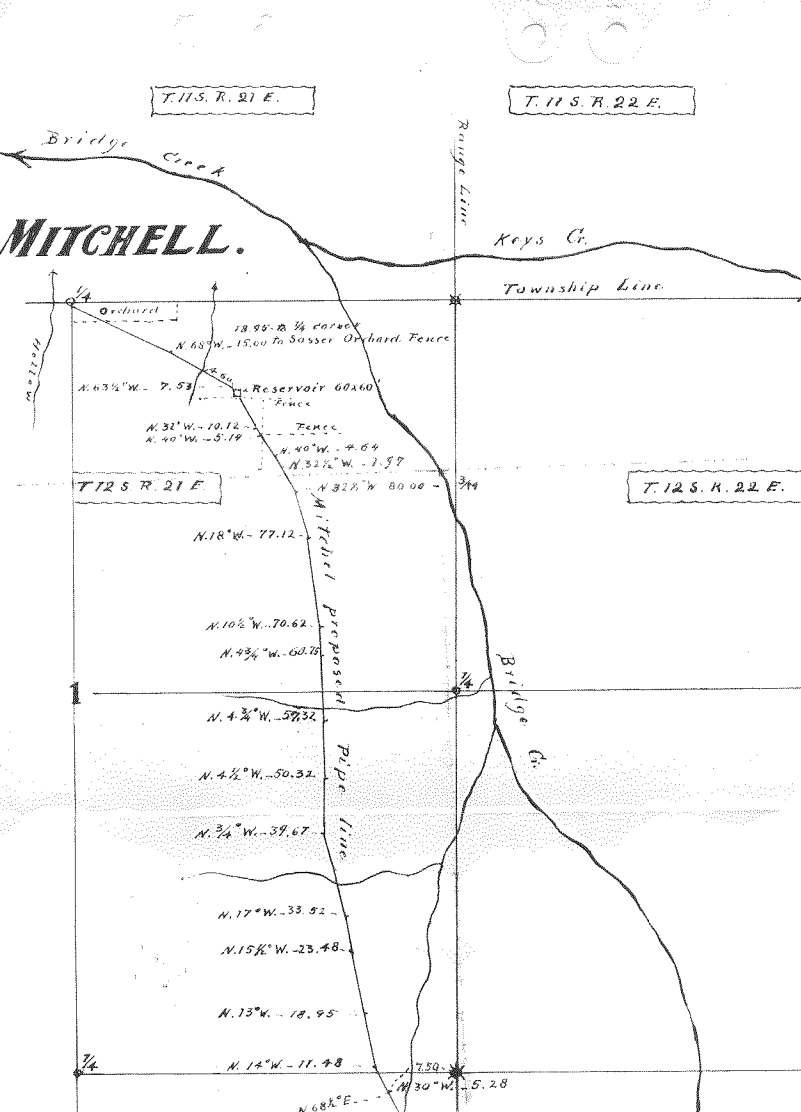
Mitchell proposed pipe line

Bridge Cr.

1/4

3/4

7.59



N. 73° W. - 18.95

N. 14° W. - 17.48

N. 68 1/2° E. - - -

7.50
N. 30° W. - 5.28

N. 40° W. - 2.28 BE Angle
N. 40° W. - 40.00 - 2M
N. 30° W. - 78.98 TO Nelson Gulch

N. 26° W. - 70.78



Scale - 1" = 70 chs.

12

N. 26° W. - 66.72

N. 5 1/2° W. - 48.58

N. 12 1/2° E. - 32.26

N. 17 1/2° E. - 36.08

N. 6° E. - 33.28

N. 11° E. - 26.75

N. 36° E. - 27.48

N. 15° E. - 19.03

N. 8° E. - 12.85

N. 17 1/2° E. - 8.48

N. 9° E. - 2.98

N. 11° E. - 8.55

N. 11° E. - 88.00

N. 3 1/2° E. - 78.87

N. 9 1/2° W. - 78.58

N. 10 1/2° E. - 72.52

N. 16 1/2° E. - 70.83

N. 12 1/2° E. - 60.83

N. 15° W. - 62.48

N. 10 1/2° W. - 57.54

N. 21 1/2° E. - 55.48

N. 2° E. - 30.48

North - 47.25

L. H. C. Herdman of Issai, Oregon, deposes to this map was made from notes taken during an archaeological audit made on February 19, 17, and March 25, 1914 and that he correctly sets the works shown on the accompanying map on the right with the location of streams and other things shown in the vicinity.

L. H. C. Herdman, s.
Witness.

Passes Oregon, directly across the line that this
 has taken during an extraordinary period by
 about 1850-1851 and that is probably
 in the accompanying explanation together
 from and other things with conditions

A. T. Sheppard
 1850

Sheppard West Ditch

N 92° E - 2.98
 N 114° E - 80.00 - 1/4
 N 3 1/2° E - 78.87
 N 9 1/2° W - 76.58
 N 104° E - 72.52

N 16° E - 70.83
 N 11° E - 66.88
 N 15° W - 62.48

N 21° E - 55.48

N 99° W - 57.54

N 2° E - 50.48

North - 47.28

N 39° E - 47.58

N 14° E - 45.08

N 10° E - 40.48

N 13 1/2° E - 36.98

N 15 1/2° E - 35.36

North - 34.44

N 2° E - 30.73

N 16° W - 27.18

N 10° W - 25.08

N 28° W - 23.75

N 26° W - 21.24

N 3° E - 20.45

N 17° E - 21.48

N 8 1/2° E - 18.62

N 16° W - 17.65

N 18° W - 16.75

N 10° W - 16.48

N 28° E - 13.74

N 46° E - 12.48

N 9° E - 12.28

N 42° E - 11.60

N 10° W - 10.37

N 8 1/2° W - 9.60

N 3° W - 8.25

N 1 1/2° E - 6.90

N 10 1/2° E - 5.50

N 37° W - 4.90

N 18° E - 75.38

N 31 1/2° E - 18.11

N 17° W - 7.50

N 5° W - 6.25

N 50 1/2° W - 3.00

N 28° W - 2.75

Cross T. & S. West Ditch

Headgate of Taylor & Sheppard West Ditch
 and S. 62° E - 23 lks to T. & S. Headgate

Headgate at Pipe line

Nelson Reservoir Branch

HOLLOW

13

18

36
20

3000

3000