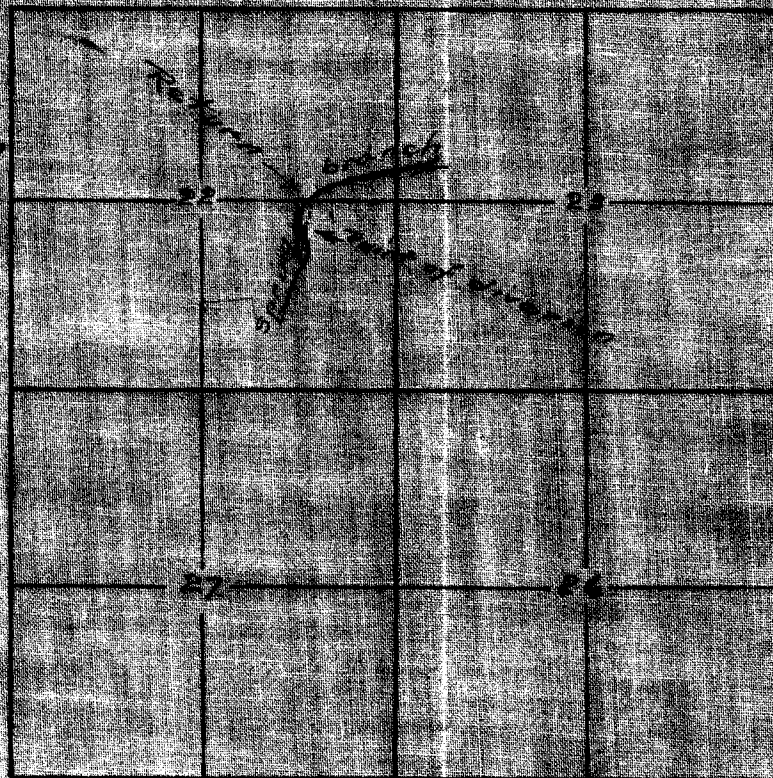


T. 8 S. R. 3. W.

point of diversion  
is 500' NW 20.20  
feet from the  
Sec Corner  
between Sections  
22 and 23



point of return is  
1775' Chas. West of  
the Sec Corner betw  
Sections 22 and 23

OFFICE OF STATE ENGINEER  
RECEIVED  
JUL 19 1910  
SALEM OREGON

Application No. 20  
Permit No. 1311

*Certificate of Surveyor.*

I W. J. Culver of Salem Oregon do hereby certify that  
this map was made from notes taken during an  
actual survey made by me on Dec 20, 1910 and that it  
correctly represents the works described in the  
accompanying application together with the location  
of streams and other ditches in the immediate  
vicinity.

*W. J. Culver*  
Surveyor