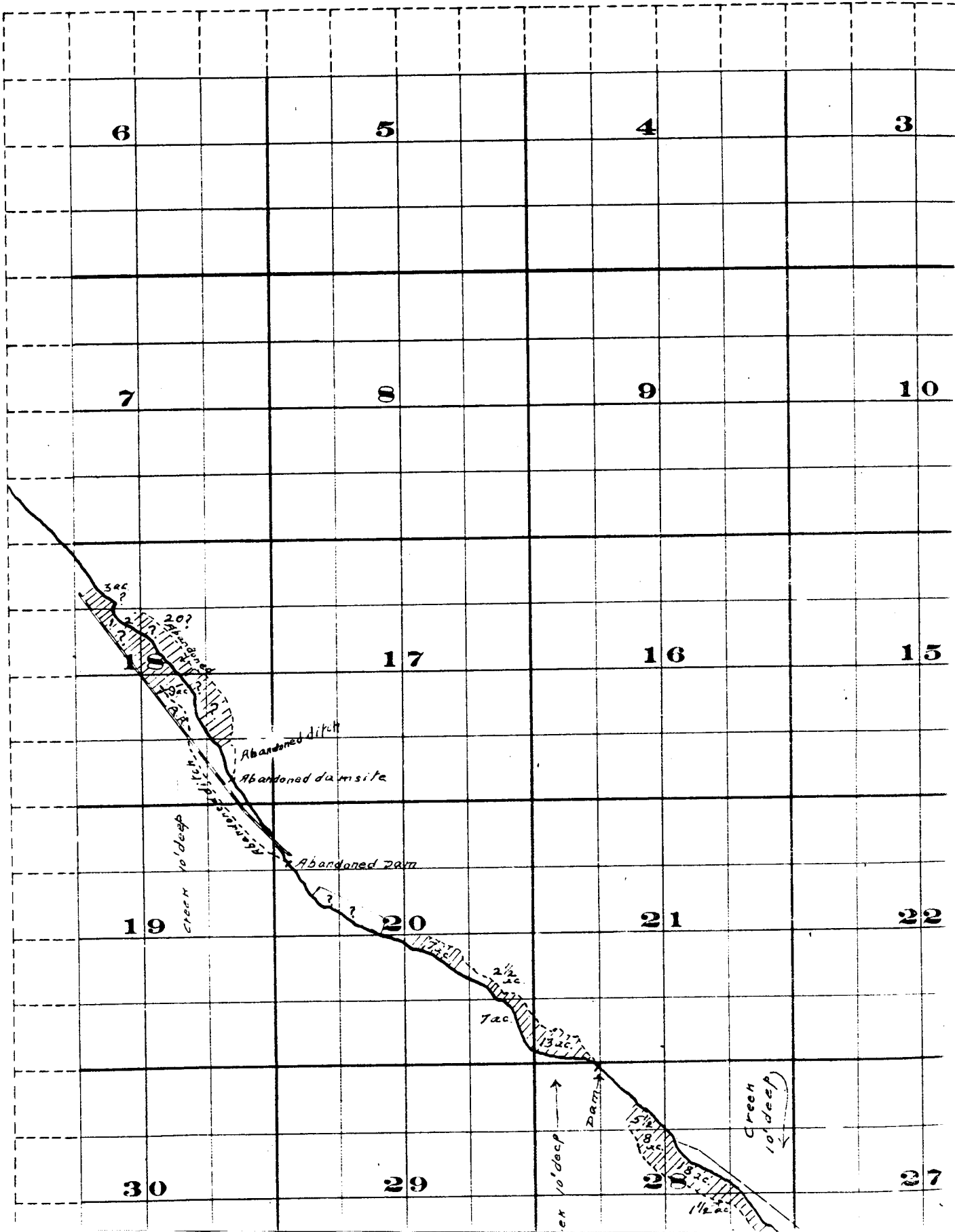
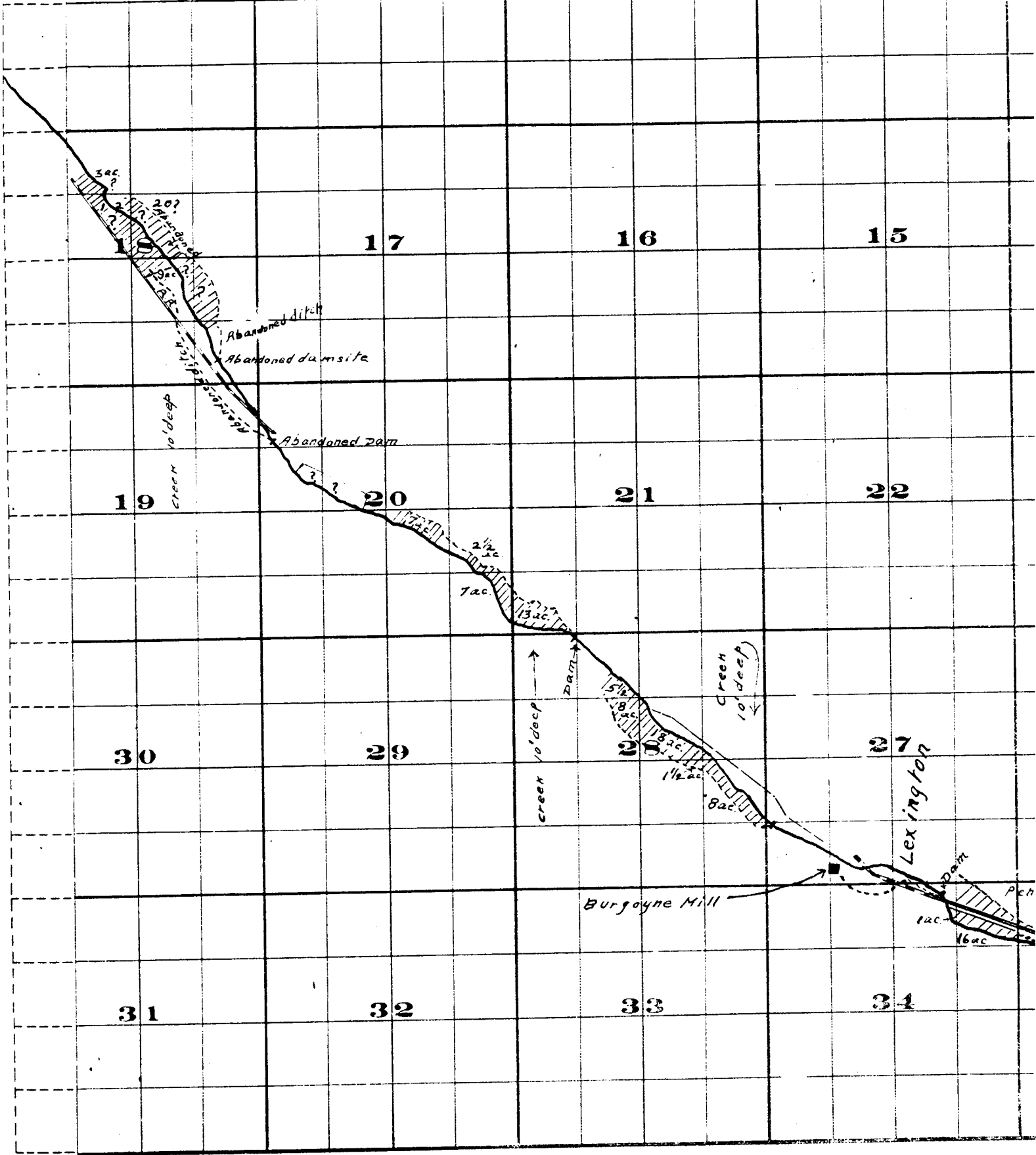


Township 15. , R:



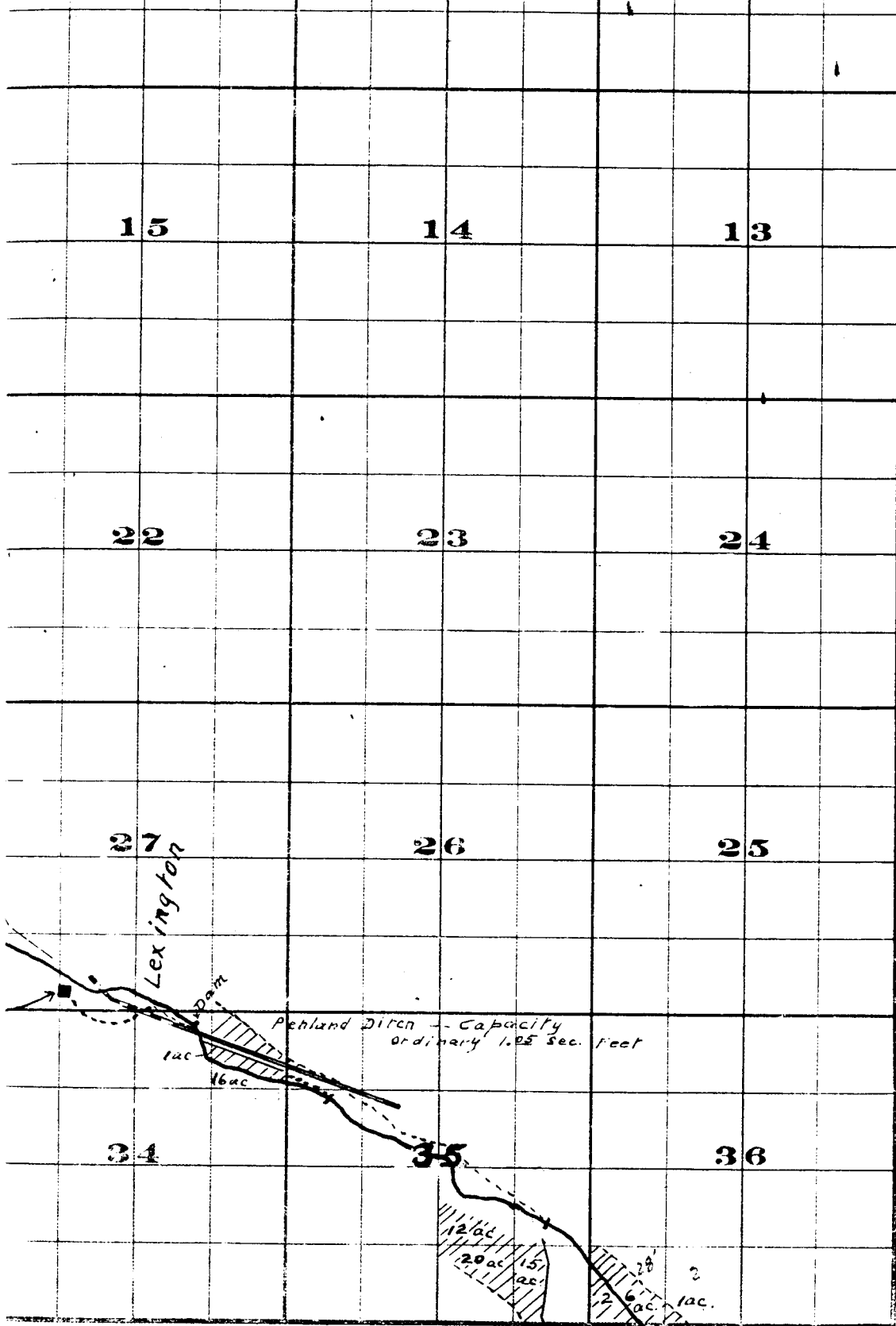


THE S. BRISTOL CO. PRINTERS & RUBBER STAMPS, 117 N. 3RD ST. W.C.

Surveyed by R.D. Gooper - July 1909

John H. Lewis - State Engineer

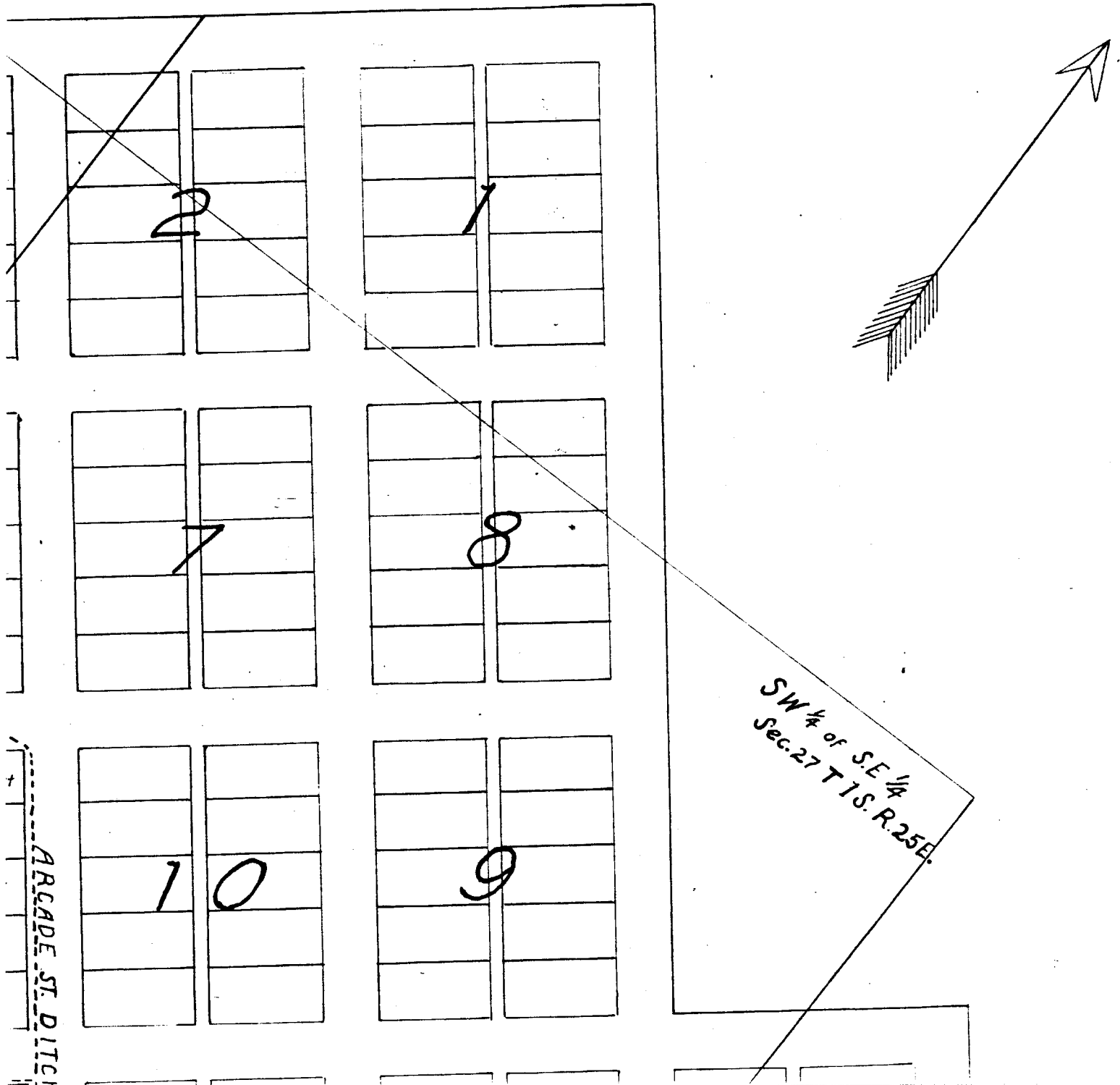
Examined July 14, 1909.



FROM OFFICE OF THE STATE ENGINEER, SALEM, OREGON

Willow Creek Adjudication.

GON



LEXINGTON

| | |
|---|---|
| | |
| | |
| 2 | 1 |
| | |
| | |

| | |
|---|---|
| | |
| 2 | 2 |
| | |
| | |
| | |

| | |
|---|--|
| | |
| | |
| 4 | |
| | |
| | |

| | |
|---|--|
| | |
| | |
| | |
| 3 | |
| | |

| |
|--------------|
| Sarah Booher |
| Sarah Booher |
| Sarah Booher |
| Sarah Booher |
| Sarah Booher |
| Sarah Booher |

| |
|--------------|
| Sarah Booher |
| Sarah Booher |
| Sarah Booher |
| Sarah Booher |
| Sarah Booher |
| Sarah Booher |

| |
|--------------|
| |
| |
| Ruth Barnett |
| Ruth Barnett |
| |
| |

| |
|------------|
| |
| |
| |
| |
| WE Pointer |
| |

| |
|----------|
| |
| |
| JM White |
| JM White |
| |
| |

| |
|--|
| |
| |
| |
| |
| |
| |

| |
|---|
| |
| |
| 2 |
| |
| |
| |

| |
|-------------|
| |
| Mrs Boothby |
| Mrs Boothby |
| |
| |
| |

| |
|--------------|
| Joe Eskelson |
| Joe Eskelson |
| Joe Eskelson |
| Joe Eskelson |
| Joe Eskelson |
| Joe Eskelson |

| |
|-----------------|
| Mrs. C.A. Bengt |
| W.R. Monkers |
| W.R. Monkers |
| W.R. Monkers |
| W.R. Monkers |
| W.R. Monkers |

| |
|--|
| WE Leach |
| Breeding |
| E.A. Bolen Trustee for Congregational Church |
| |
| |
| |

| |
|-------------|
| WG Scott |
| WG Scott |
| WG Scott |
| Mrs. Beymer |
| Mrs. Beymer |
| |

Mill Race

Ellis

John

John

ARCADE ST. DITCH

John



1 Lot = 1/6 Acre

Note - Lots in Which Names Are Shown Are Irrigated

John H. Lewis - State Engineer Examined J.

| | |
|---|--|
| 7 | |
| | |
| | |

| | |
|---|--|
| 8 | |
| | |
| | |

| | |
|----|--|
| | |
| 10 | |
| | |
| | |

| | |
|---|--|
| | |
| 9 | |
| | |
| | |

SW 1/4 of S.E. 1/4
Sec. 27 T 1 S. R. 25 E.

ARCADE ST. DITCH

| | |
|----------------|---|
| John McMillion | |
| John McMillion | |
| John McMillion | 5 |
| John McMillion | |
| John McMillion | |

| | |
|-------------|--------------|
| J.E. Gentry | A.M. Zink |
| J.E. Gentry | A.M. Zink |
| 1 | 6 |
| | F. Beymer |
| | W.F. Barnett |
| | W.F. Barnett |

| | |
|--------------|------------|
| Peter McCabe | E.S. Duran |
| Peter McCabe | E.S. Duran |
| Peter McCabe | E.S. Duran |
| W.F. Barnett | E.S. Duran |
| | |

| | |
|-------------|---|
| | |
| | |
| 1 | 8 |
| Mrs. Beymer | |
| Mrs. Beymer | |

| | |
|-------------------|----------------|
| | Frank Parker |
| W.B. McAllister | Roy McAllister |
| W.B. McAllister | 7 |
| Mrs. S.J. Boothby | E.W. Moyers |
| Mrs. S.J. Boothby | E.W. Moyers |

PENLAND DITCH

| | |
|----|---|
| 10 | 1 |
| 9 | 2 |
| 8 | 3 |
| 7 | 4 |
| 6 | 5 |

All lots numbered the same

Scale 150 Ft. = 1 in

mined July 14, 1909.

Lexington.

1 S. 25 E.