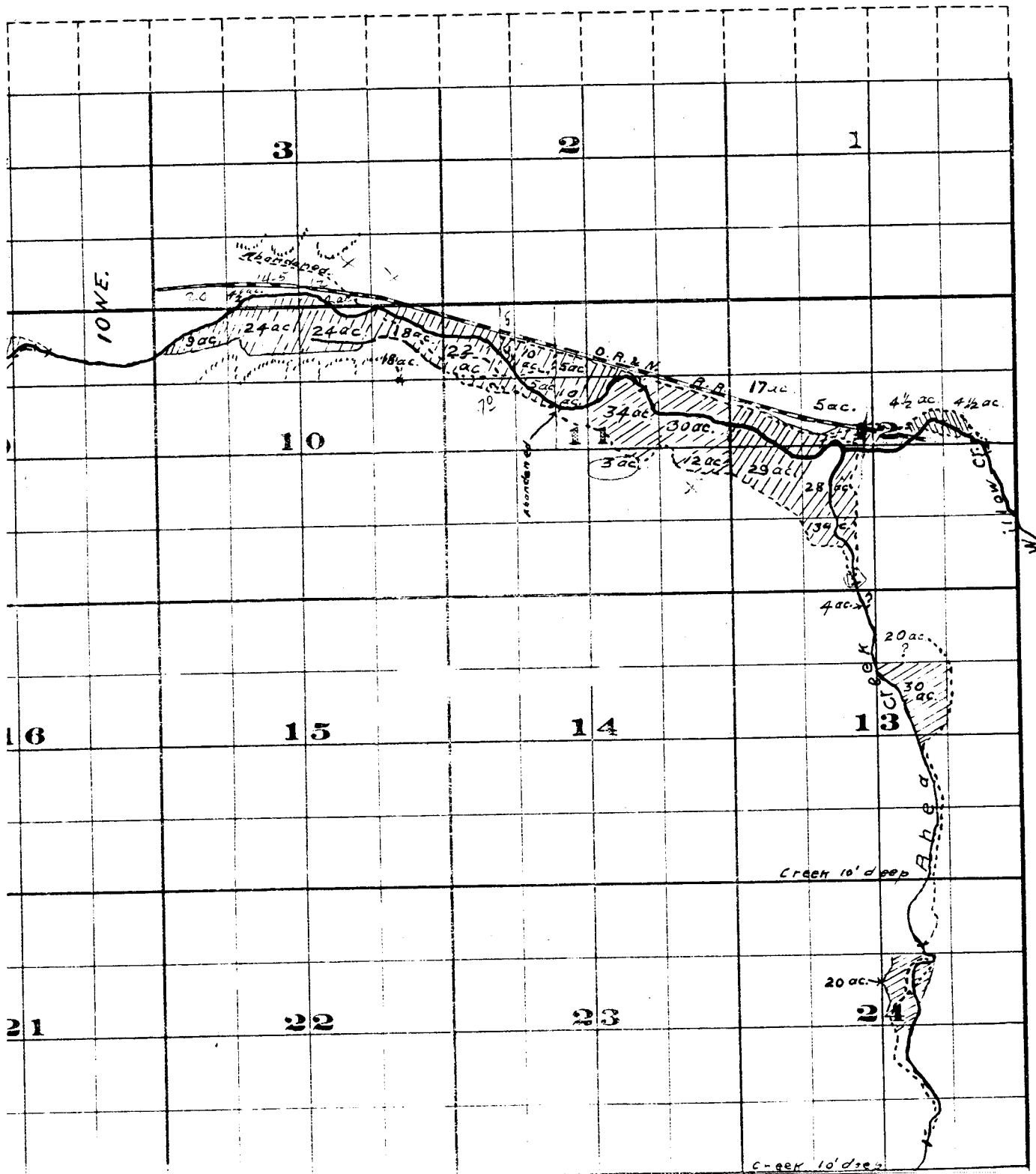
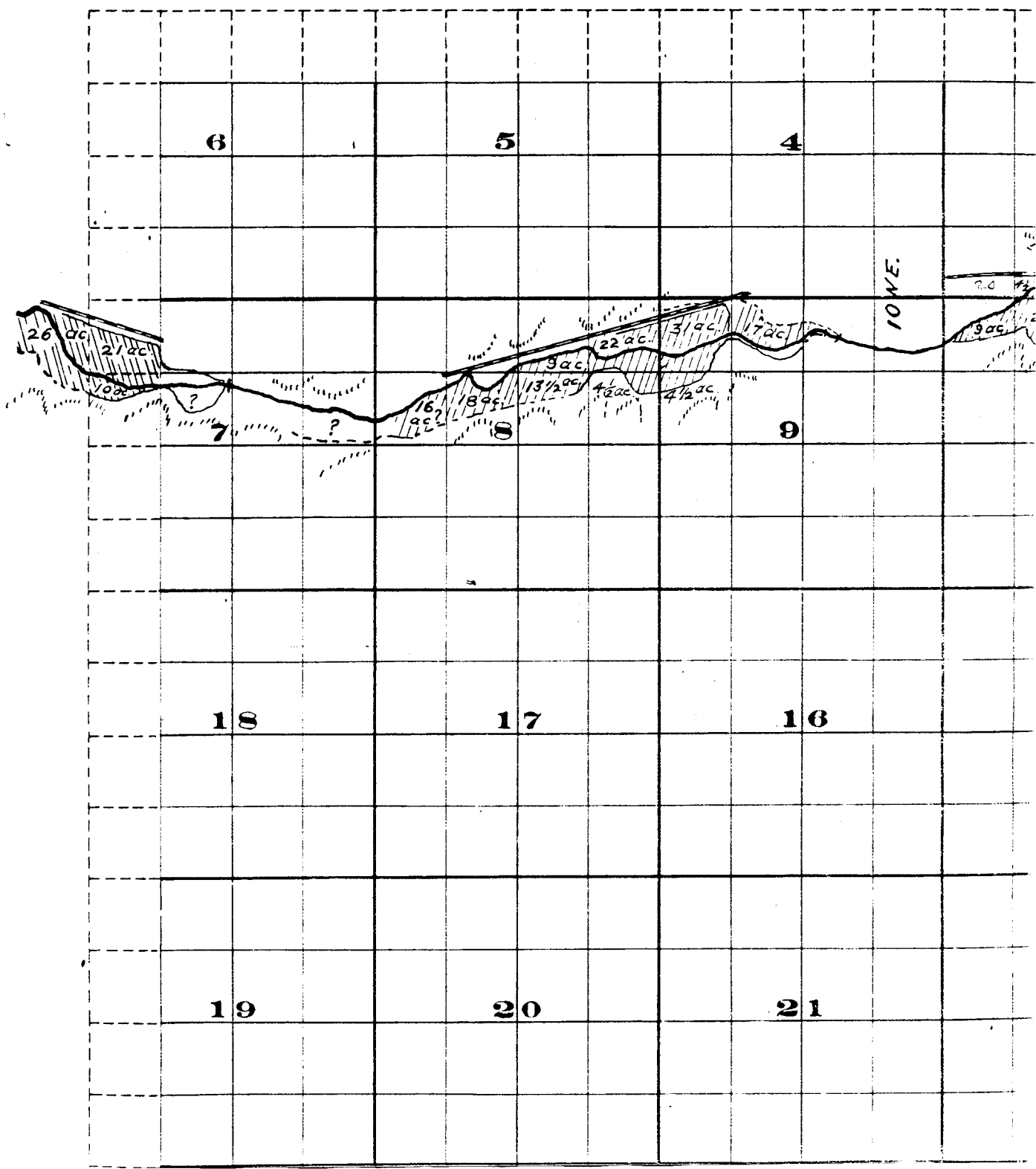


, Range 24 E.W.M.



# Township 15, ,



18

17

16

15

19

20

21

22

30

29

28

27

31

32

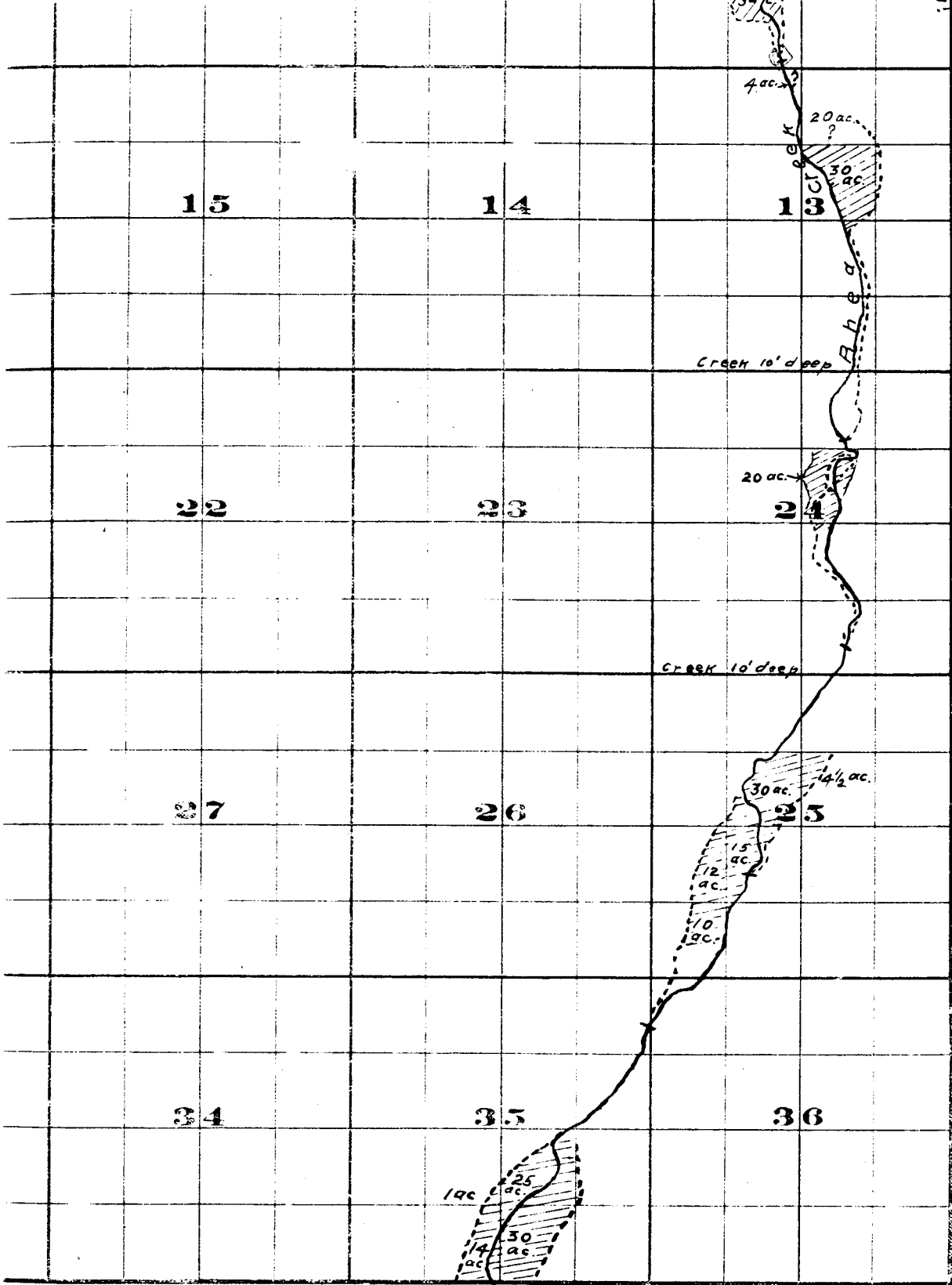
33

34

Surveyed by R.D. Cooper July 1909

John H. Lewis - State Engineer

Examined July 14, 1909.



FROM OFFICE OF THE STATE ENGINEER, SALEM, OREGON

*Willow Creek Adjudication.*

1 S. 24 E

R. 1 E. 37 E