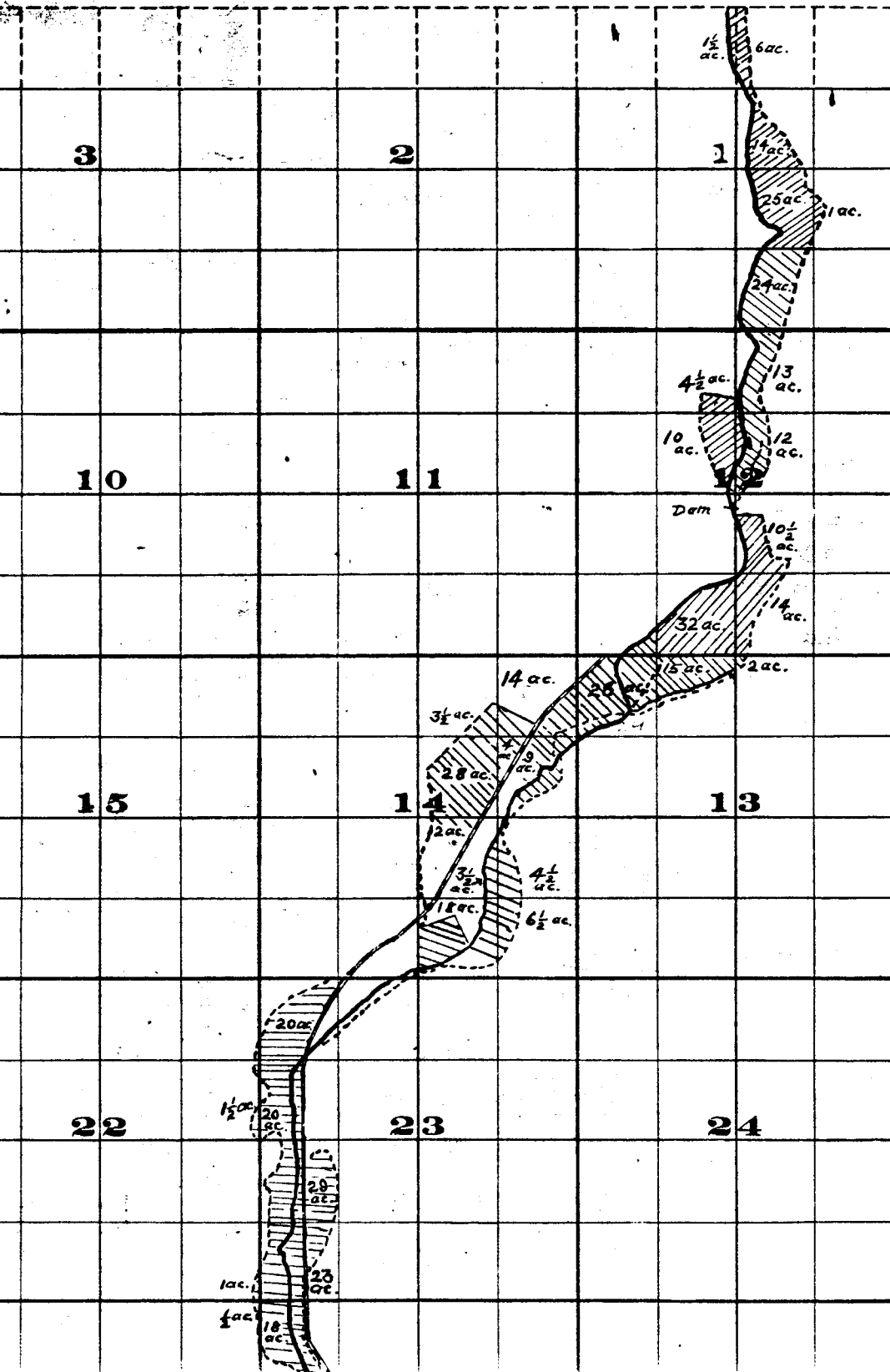


Range 22 E.W.M.



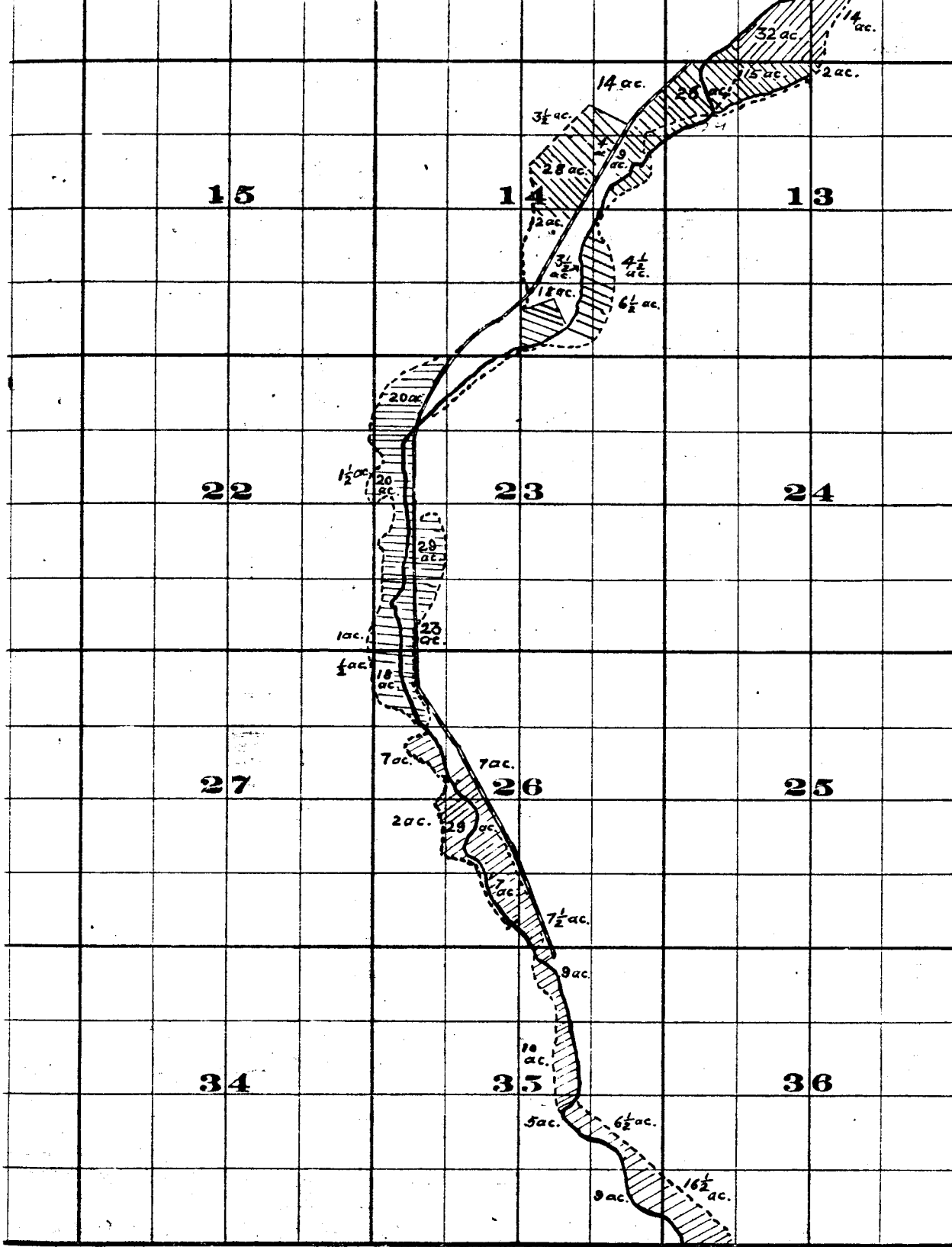
	18		17		16				15
	19		20		21				22
	30		29		28				27
	31		32		33				34

THE S. A. BRISTOL CO., PRINTERS & BOOKBINDERS, CHEYENNE, WYO.

Surveyed by H. H. Donnelly July 1909

John H. Lewis - State Engineer

Examined - July 14, 1909



FROM OFFICE OF THE STATE ENGINEER, SALEM, OREGON

Willow Creek Adjudication.

3 N. 2.

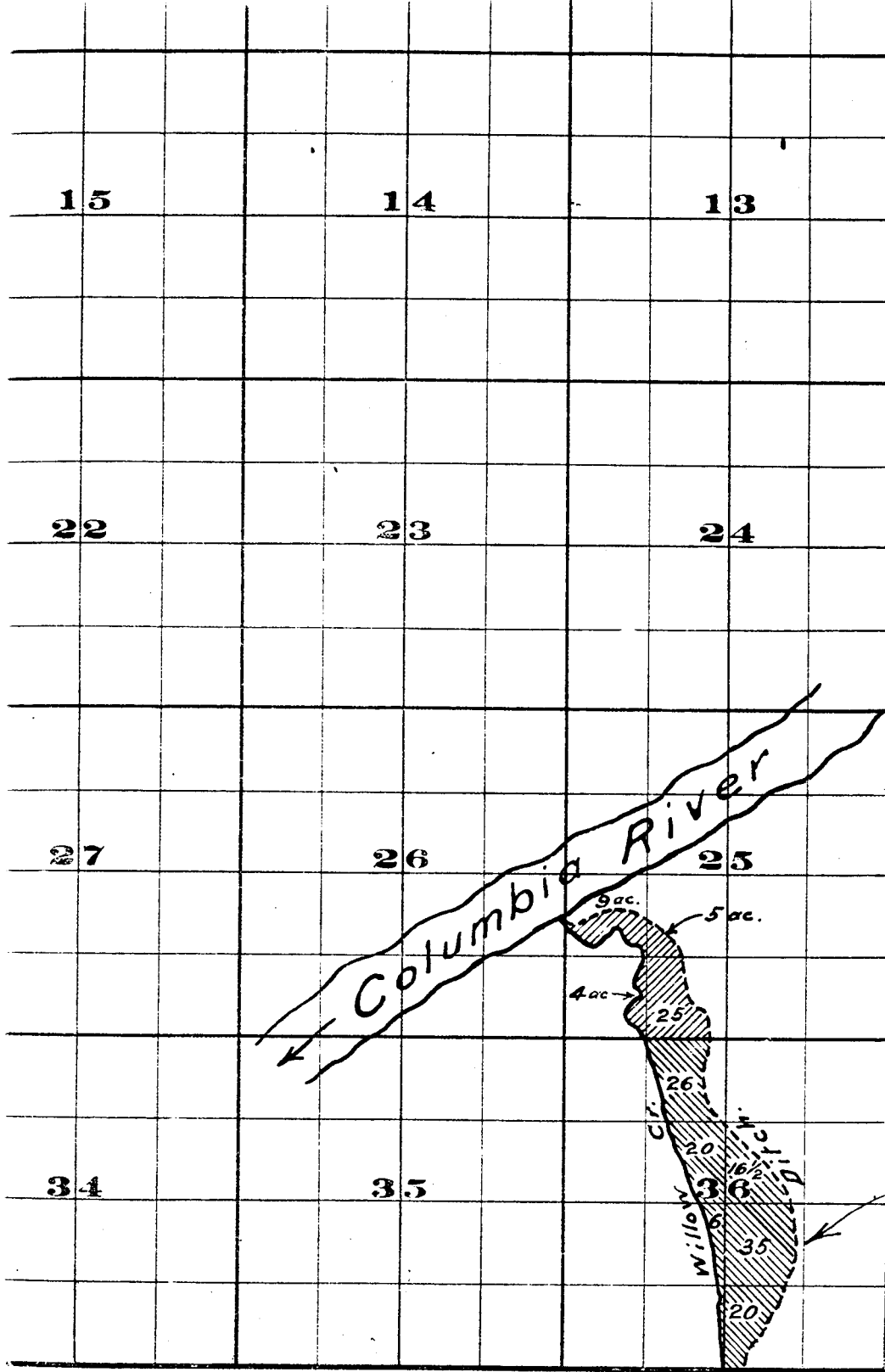
	18			17			16		15
	19			20			21		22
	30			29			28		27
	31			32			33		34

THE S. A. BRISTOL CO. PRINTERS & BOOKBINDERS, CHEYENNE, WYO.

Surveyed by H. K. Donnelly July 1909.

John H. Lewis - State Engineer.

Examined July 14, 1909.



FROM OFFICE OF THE STATE ENGINEER, SALEM, OREGON

Willow Creek Adjudication.

Irrigated Lands Shown Thus,

4 N. 22 E.