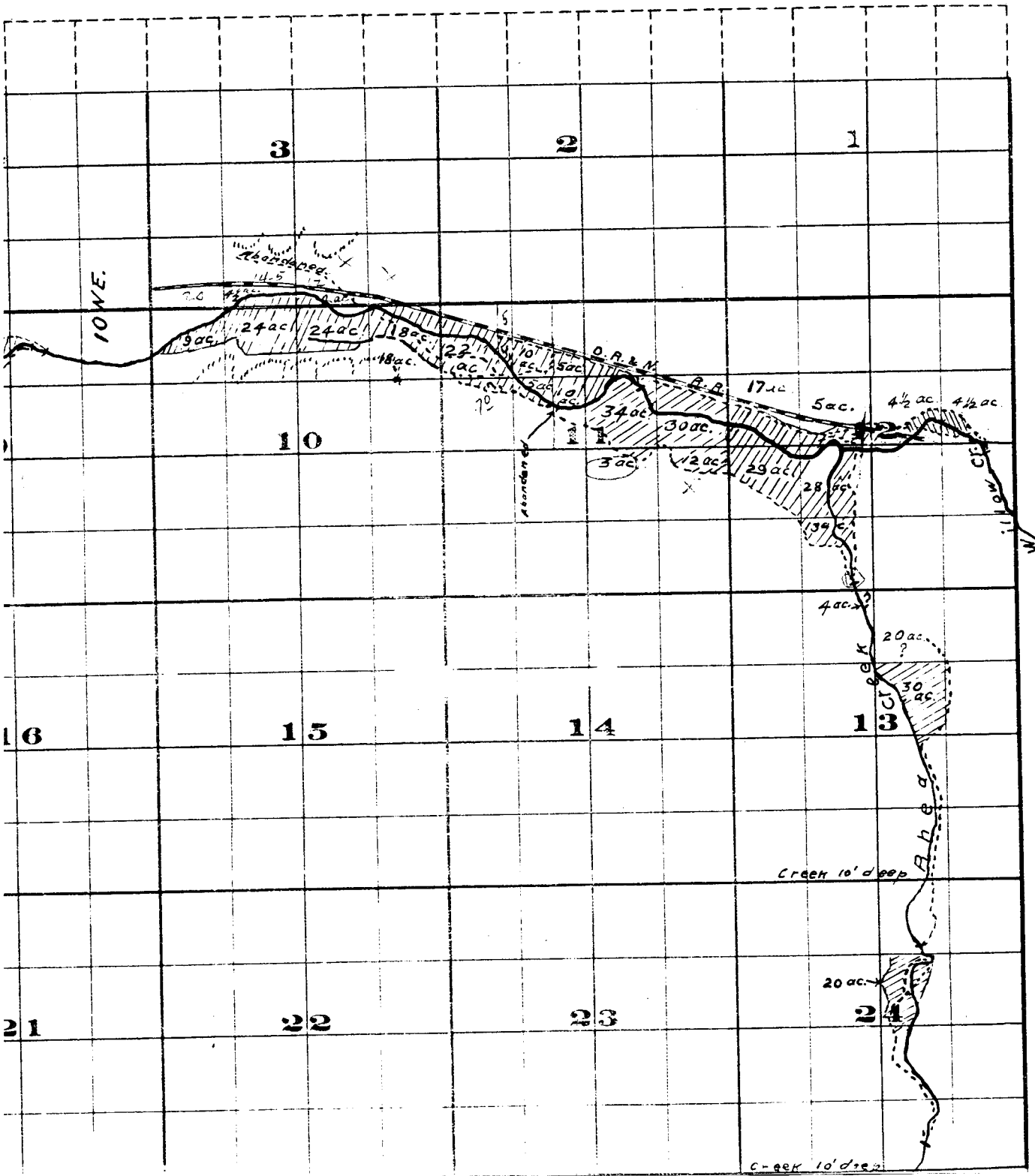
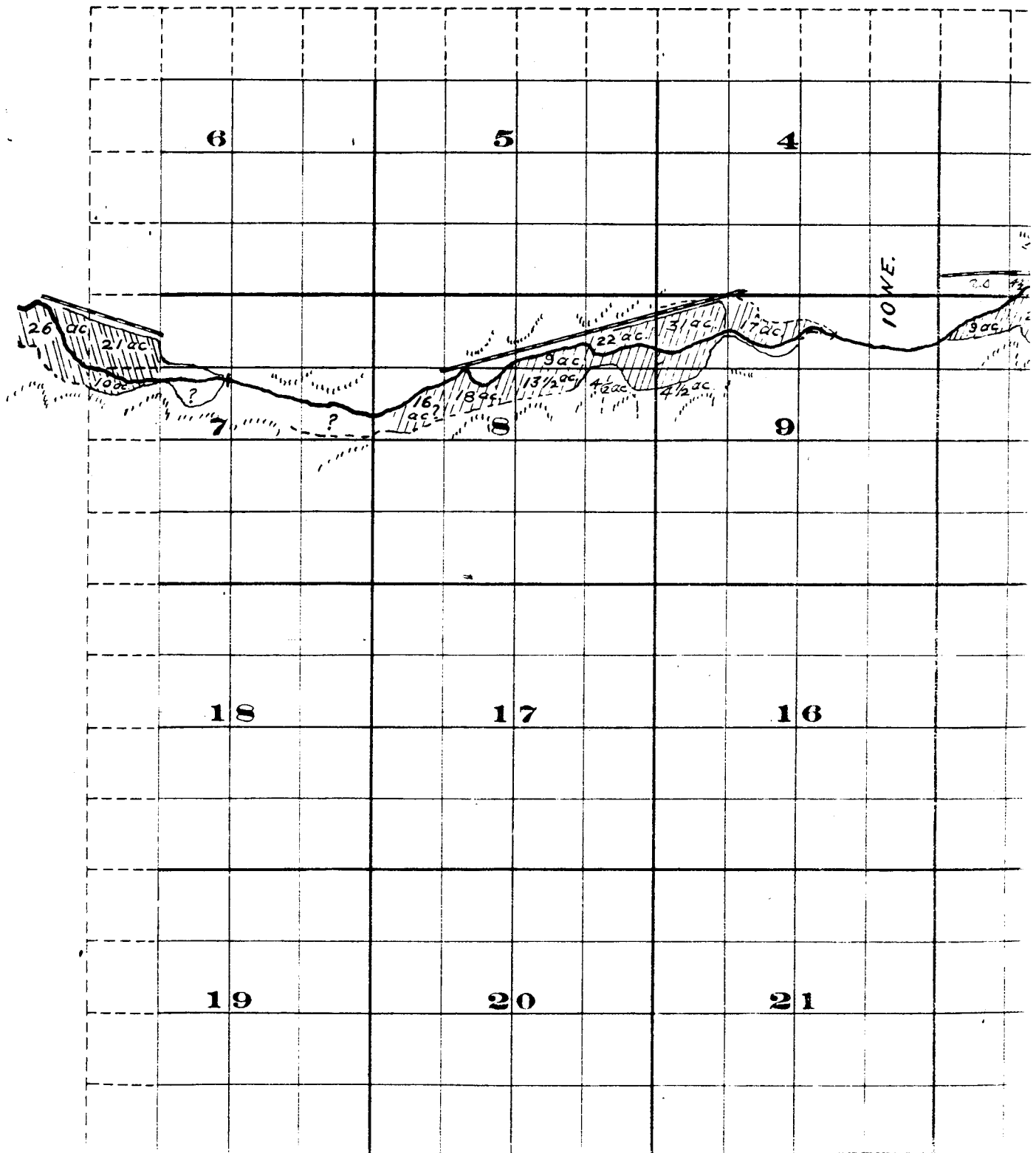


Range 24 E.W.M.

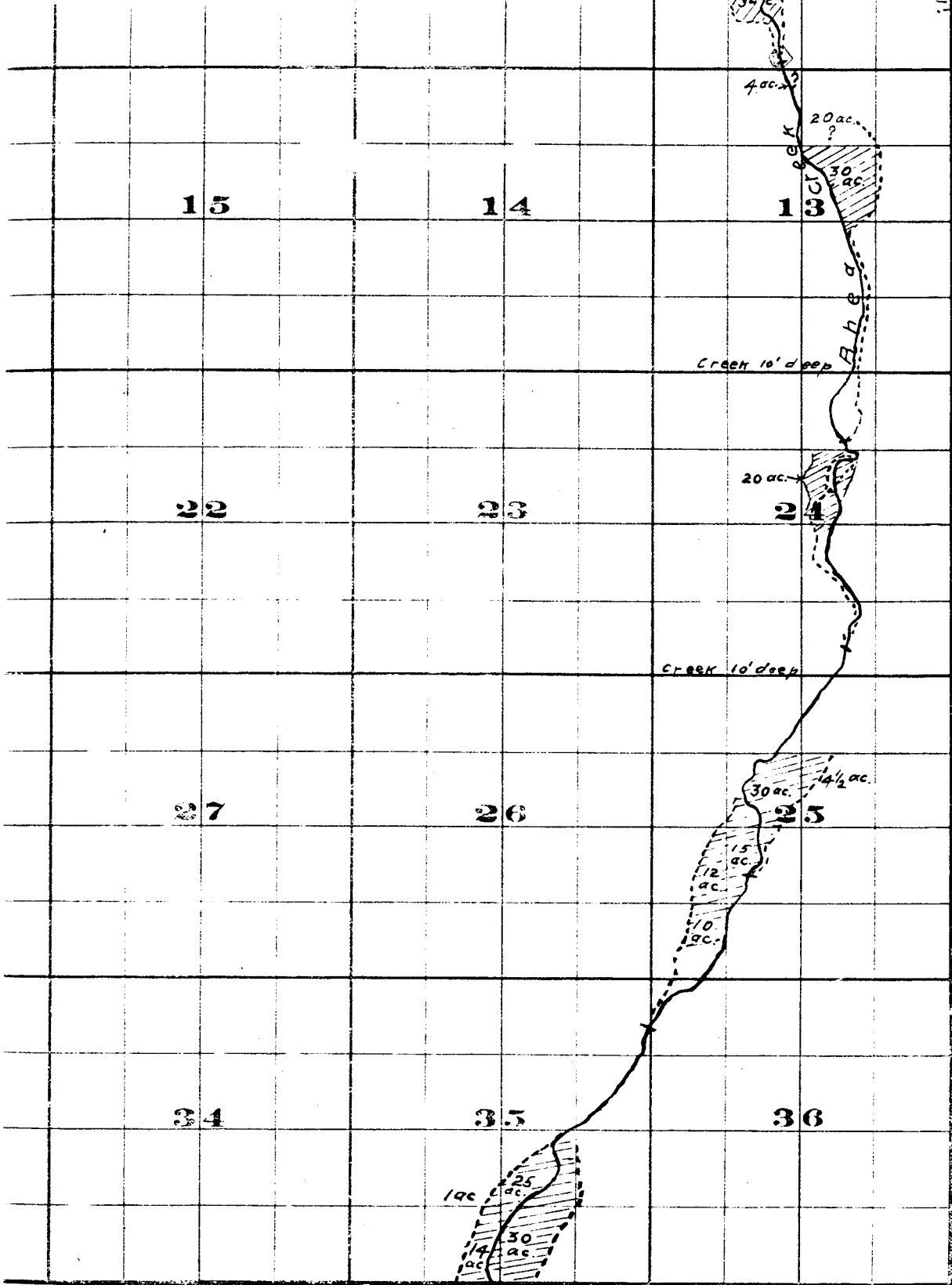


Township 15.



	18		17		16			15	
	19		20		21			22	
	30		29		28			27	
	31		32		33			34	

Surveyed by A.D. Cooper July 1909
John H. Lewis - State Engineer
Examined July 14, 1909.



FROM OFFICE OF THE STATE ENGINEER, SALEM, OREGON

Willow Creek Adjudication.

1 S. 24 E

R. 1 W. 37 E