

FROM OFFICE OF THE STATE ENGINEER, SALEM, OREGON

*Willow Creek Adjudication.*

1 S. 24 E

R. 1 W. 37 E

18

17

16

15

19

20

21

22

30

29

28

27

31

32

33

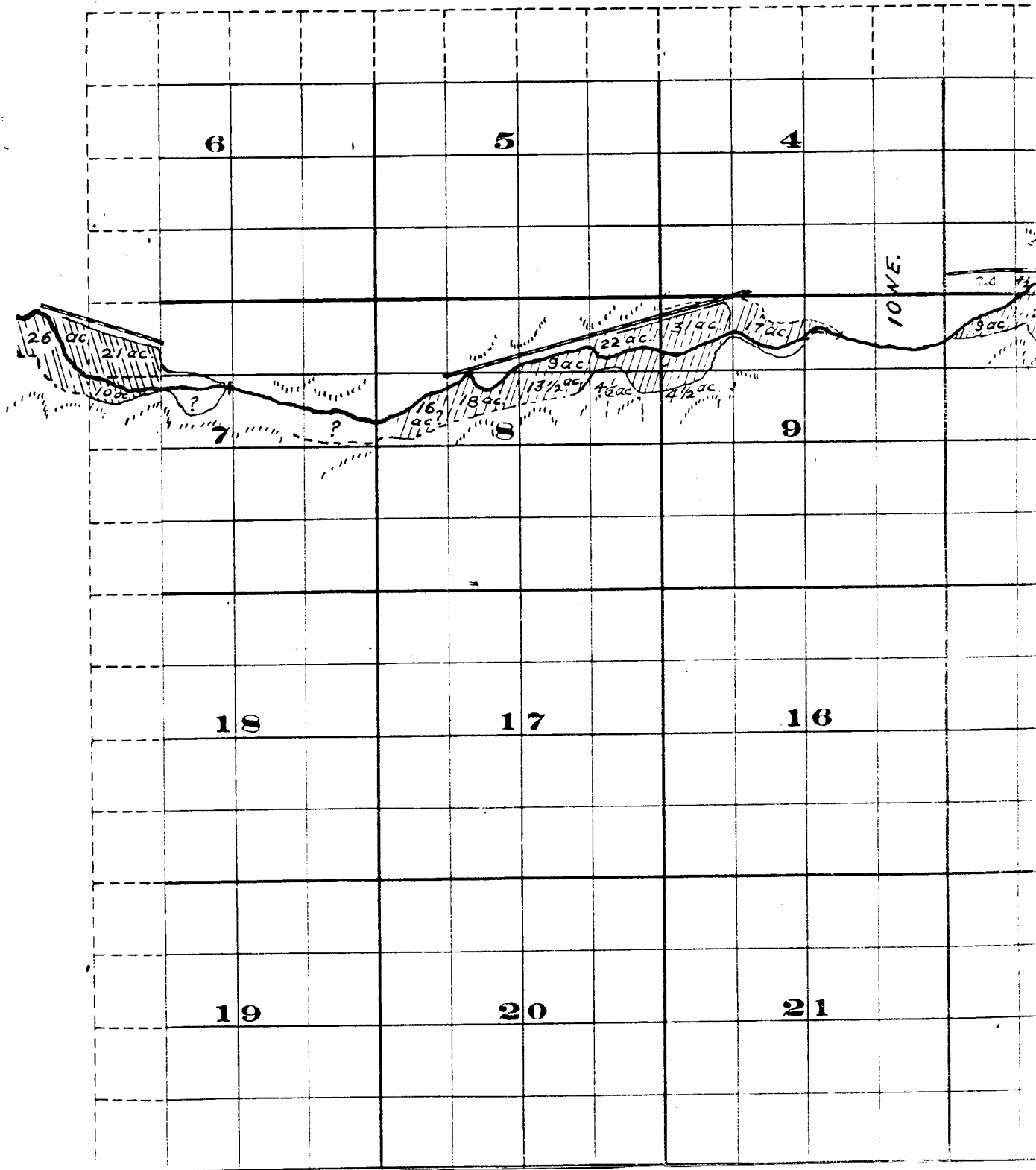
34

Surveyed by R.D. Cooper July 1909

John H. Lewis - State Engineer

Examined July 14, 1909.

# Township 15,



, Range 24 E.W.M.

