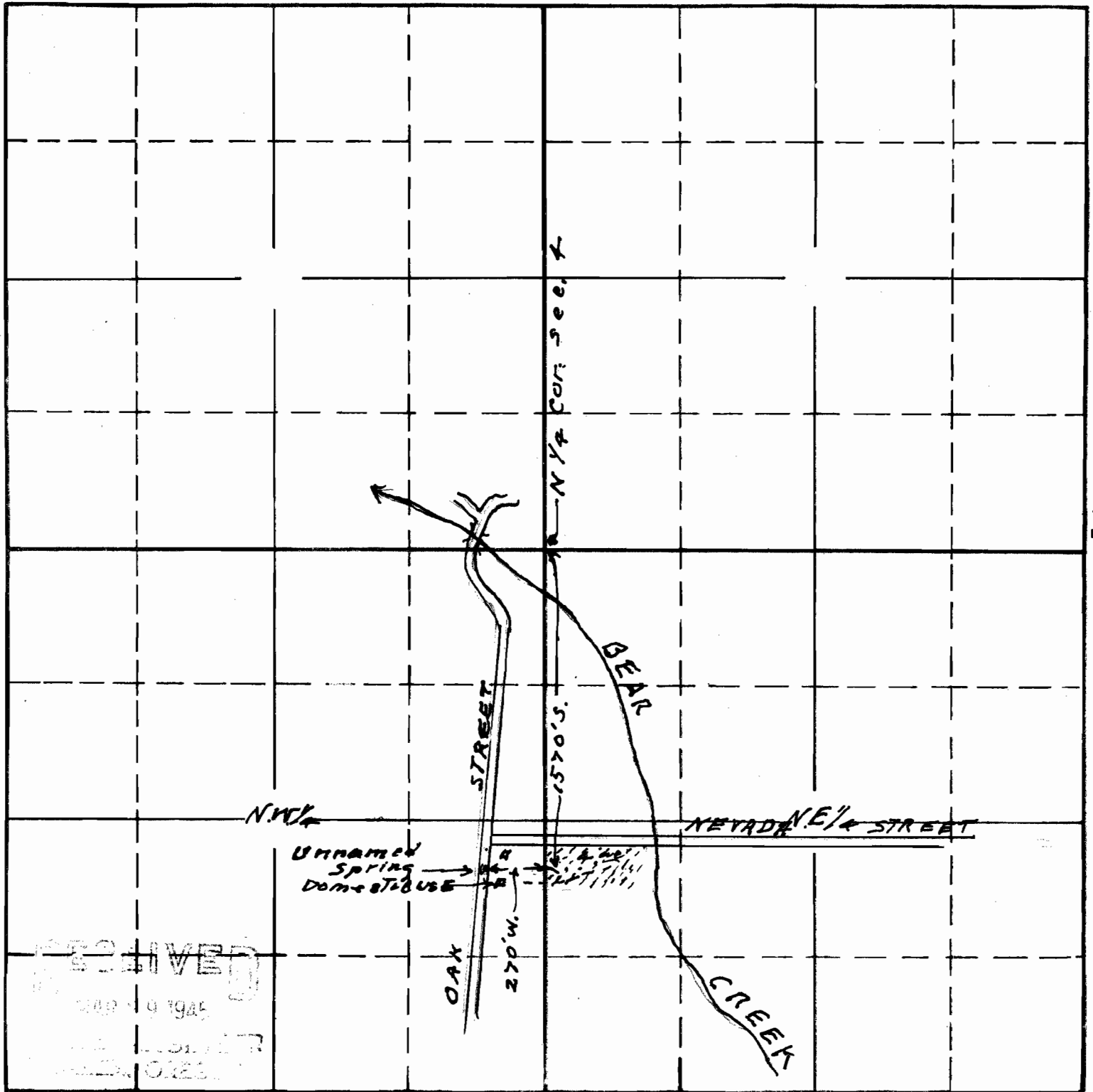


TOWNSHIP 39S, RANGE 1E, W. M.

North

West

East



South

20757  
15-23

APPLICATION No. 20757

PERMIT No. 16243

Sketch to accompany application of  
W.R. and Arla & Magnus for use of waters  
of unnamed spring arising on Oak St.  
Ashland Ore. for domestic and irrigation

This office 3/20/45 *Alvord*