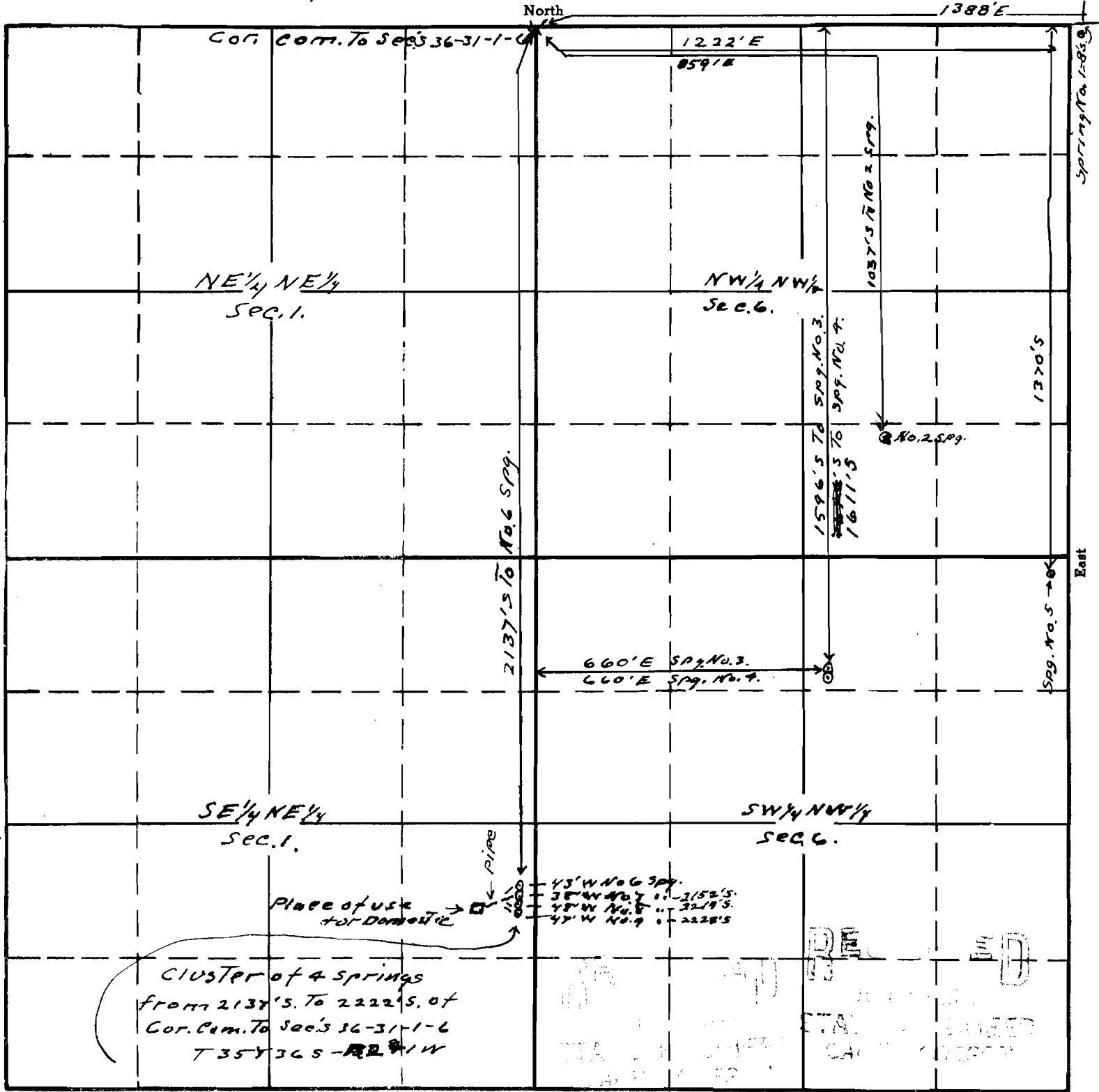


1-6

TOWNSHIP 36 S, RANGE 12 W W. M.

T. 36 S., R. 2 W.

T. 36 S., R. 1 W.

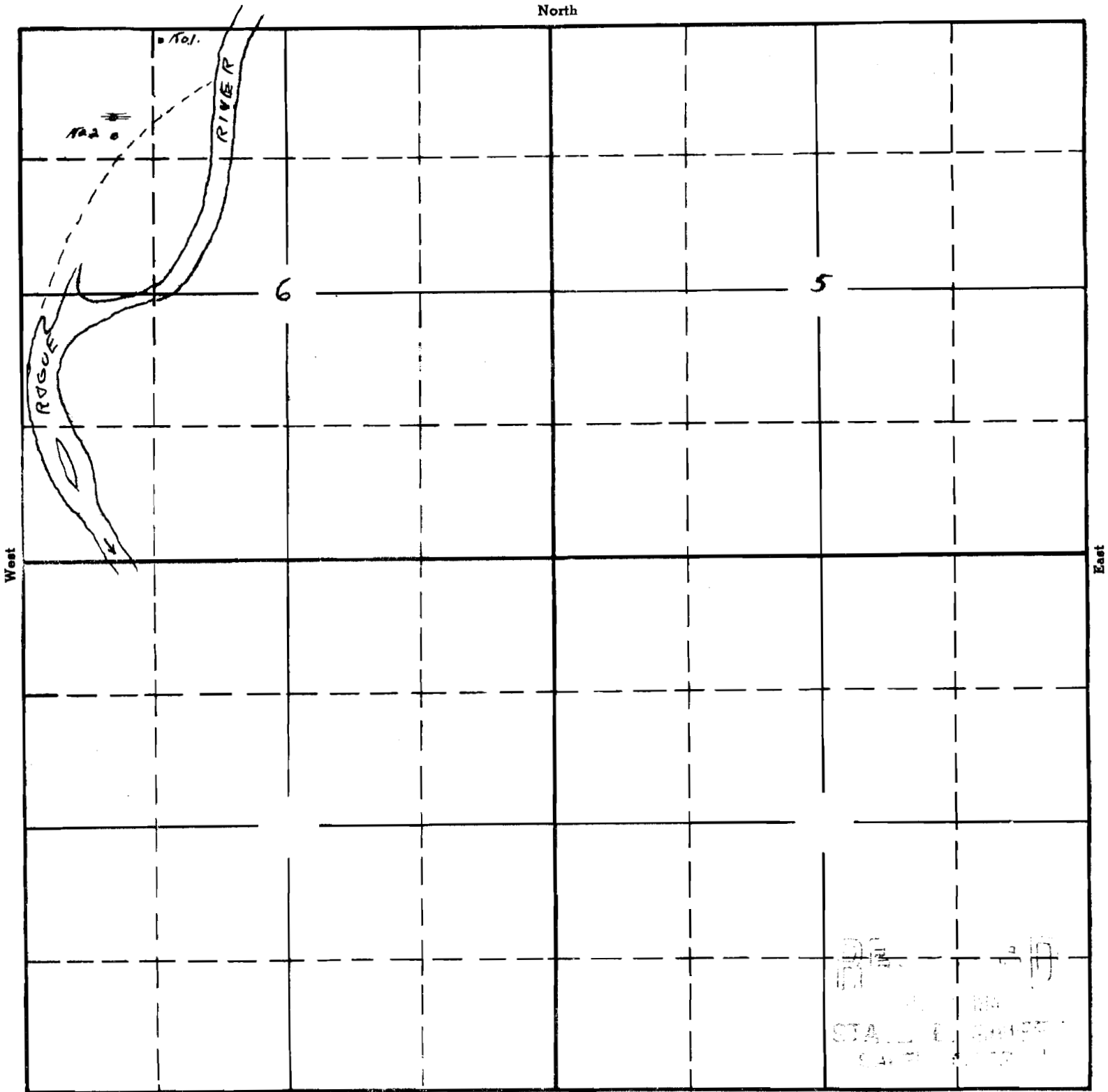


Sketch to accompany application of
 R W. Ryan for use of 9 spgs on his place
 for stock and domestic purposes.

19735
 15-72
 APPLICATION No. 19735
 PERMIT No. 15322

This office 6/26/42

TOWNSHIP 36S, RANGE 1W, W. M.



Sketch re B.W. RYAN application

showing location of Rogue River as shown by U.S.G.S. survey made in co-operation with The Cal. Ore. Power Co. in 1923 - see D

APPLICATION No.

PERMIT No.

DEPT. OF THE INTERIOR
 BUREAU OF RECLAMATION
 STATIONER
 CALIF. DIST. 10