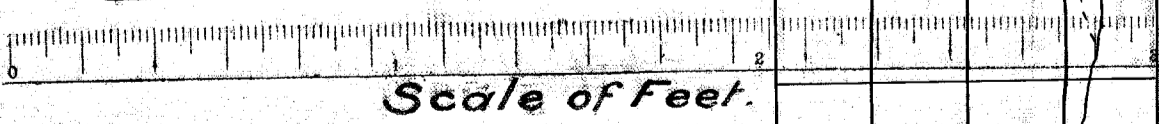
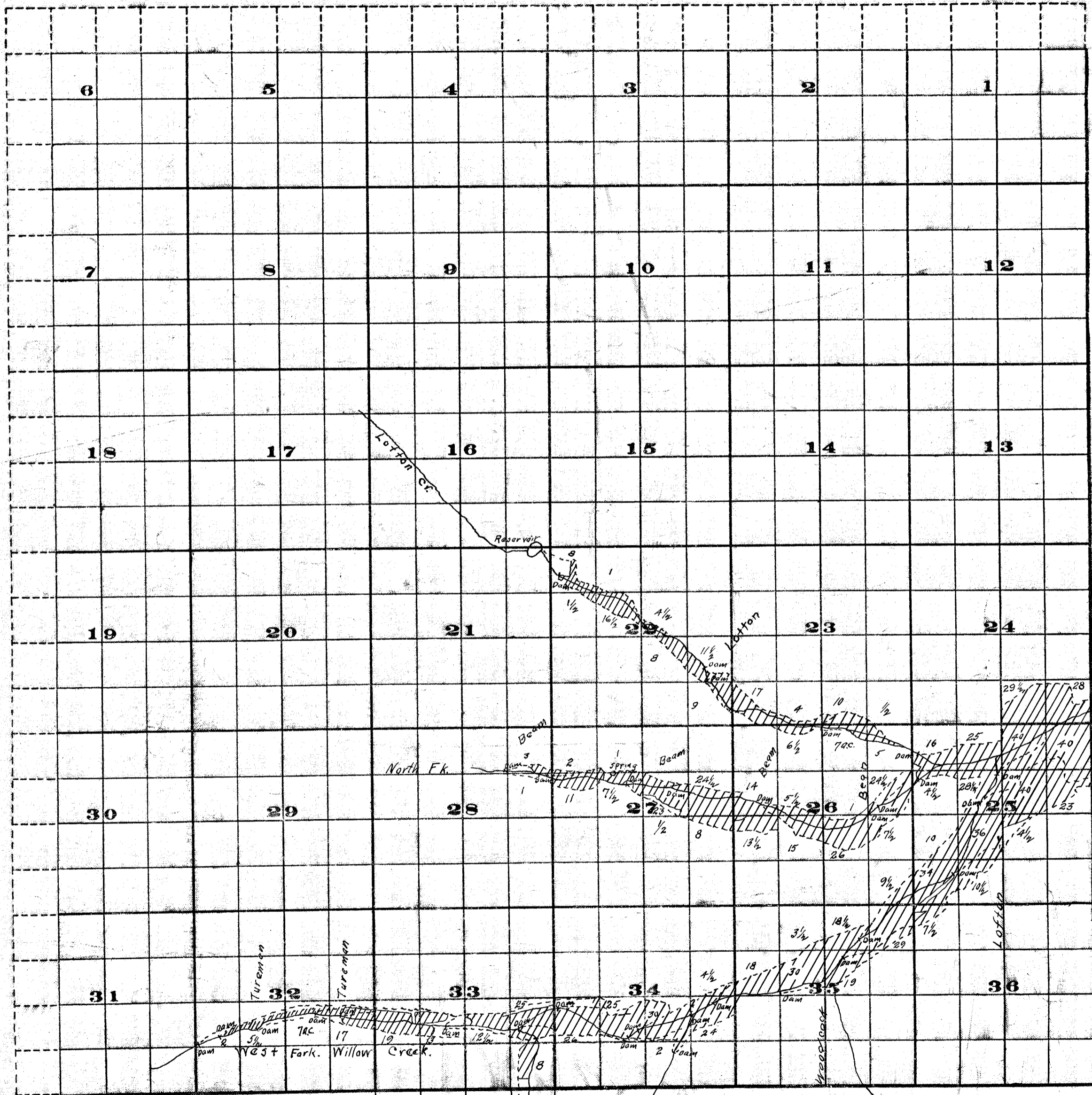


Township 14S., Range 38E. M.M.



FROM OFFICE OF THE STATE ENGINEER, SALEM, OREGON
 Survey By Rhea Luper
 April 3rd 1910

John H. Lewis State Eng.
 Examined Aug 24, 1910

Adjudication- Willow Creek- Malheur Co.,

30d. 835 ac.
 28 mi.