

ECTION

Tr. M-20

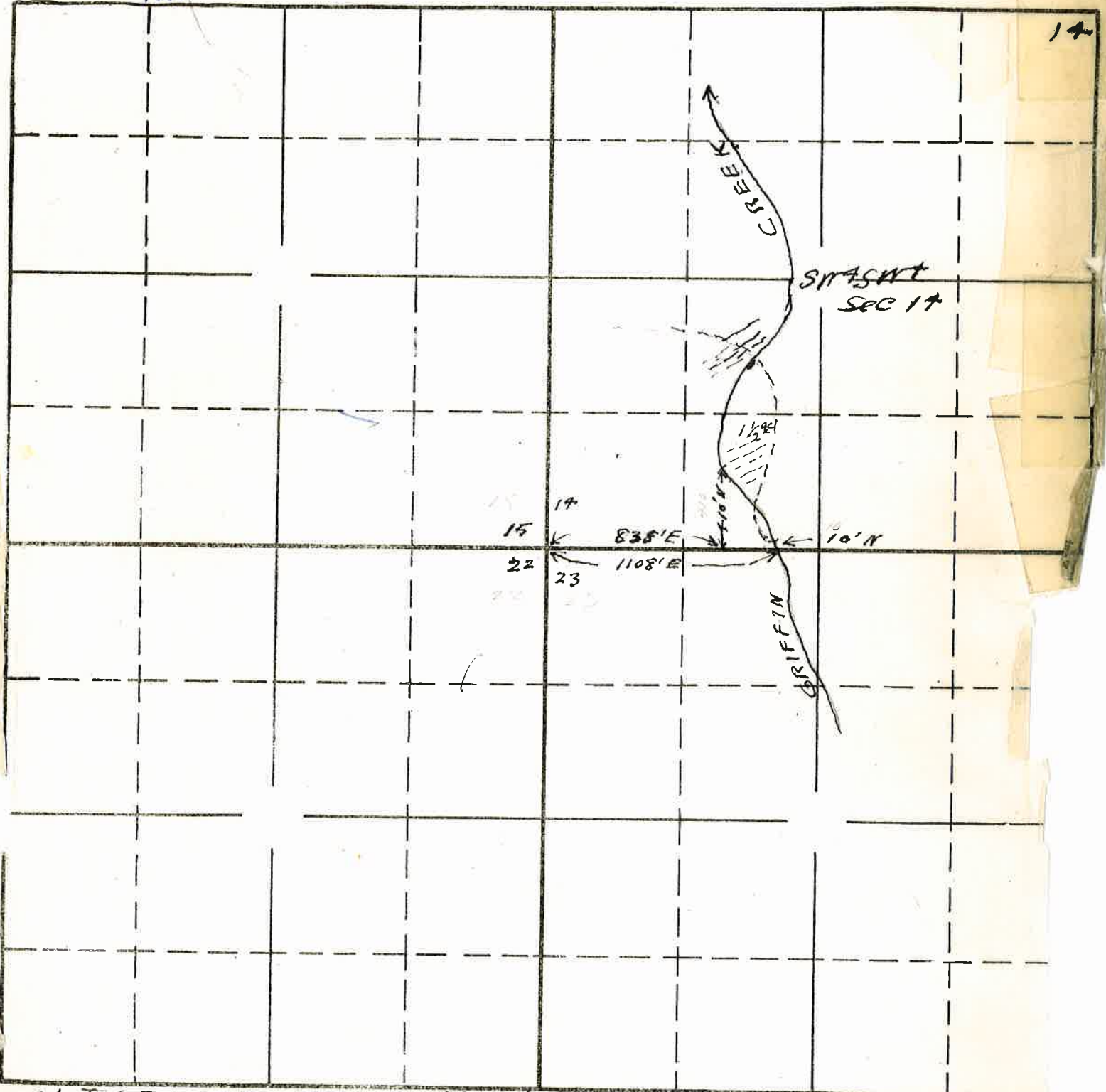
M. L. Meadows - change in point of diversion of W. H. Fields's Right R.R.D. Rogue River Decree-Part 16098 Change in point of

TOWNSHIP 38S, RANGE 2W, W. M.

map... of this right.

Pr. 1887 R.R.D 16098

North



Sketch to acc. app of ML Meadows for change in point of diversion

9/8/41

This is for APPLICATION No.