

7	

8	

10	

	9

SW 1/4 of S.E. 1/4
Sec. 27 T 1 S. R. 25 E.

ARCADE ST. DITCH

John McMillion	
John McMillion	
John McMillion	5
John McMillion	
John McMillion	

J.E. Gentry	A.M. Zink
J.E. Gentry	A.M. Zink
1	6
	F. Beymer
	W.F. Barnett
	W.F. Barnett

Peter McCabe	E.S. Duran
Peter McCabe	E.S. Duran
Peter McCabe	E.S. Duran
W.F. Barnett	E.S. Duran

1	8
Mrs. Beymer	
Mrs. Beymer	

	Frank Parker
W.B. McAllister	Roy McAllister
W.B. McAllister	7
Mrs. S.J. Boothby	E.W. Moyers
Mrs. S.J. Boothby	E.W. Moyers

10	1
9	2
8	3
7	4
6	5

PENLAND DITCH

All lots numbered the same

Scale 150 Ft. = 1 in

Lexington.

1 S. 25 E.

mined July 14, 1909.



1 Lot = 1/6 Acre

Note - Lots in Which Names Are Shown Are Irrigated

John H. Lewis - State Engineer Examined J.

LEXINGTON

2	1

2	2

	4

	3

Sarah Booher
Sarah Booher
Sarah Booher
Sarah Booher
Sarah Booher
Sarah Booher

Sarah Booher
Sarah Booher
Sarah Booher
Sarah Booher
Sarah Booher

Ruth Barnett
Ruth Barnett

WE Pointer

JM White
JM White

Mrs. Boothby
Mrs. Boothby

Joe Eskelson
Joe Eskelson
Joe Eskelson
Joe Eskelson
Joe Eskelson
Joe Eskelson

Mrs. CA. Benge
W.R. Monkers
W.R. Monkers
W.R. Monkers
W.R. Monkers
W.R. Monkers

WE Leach
Breeding
EA Leach Trustee for Congregational Church

WG Scott
WG Scott
WG Scott
Mrs. Beymer
Mrs. Beymer

--

--

Ellis

--

John

John

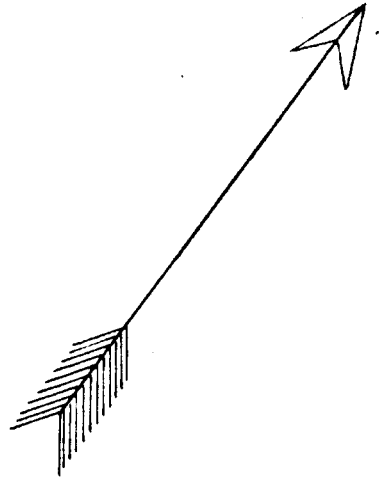
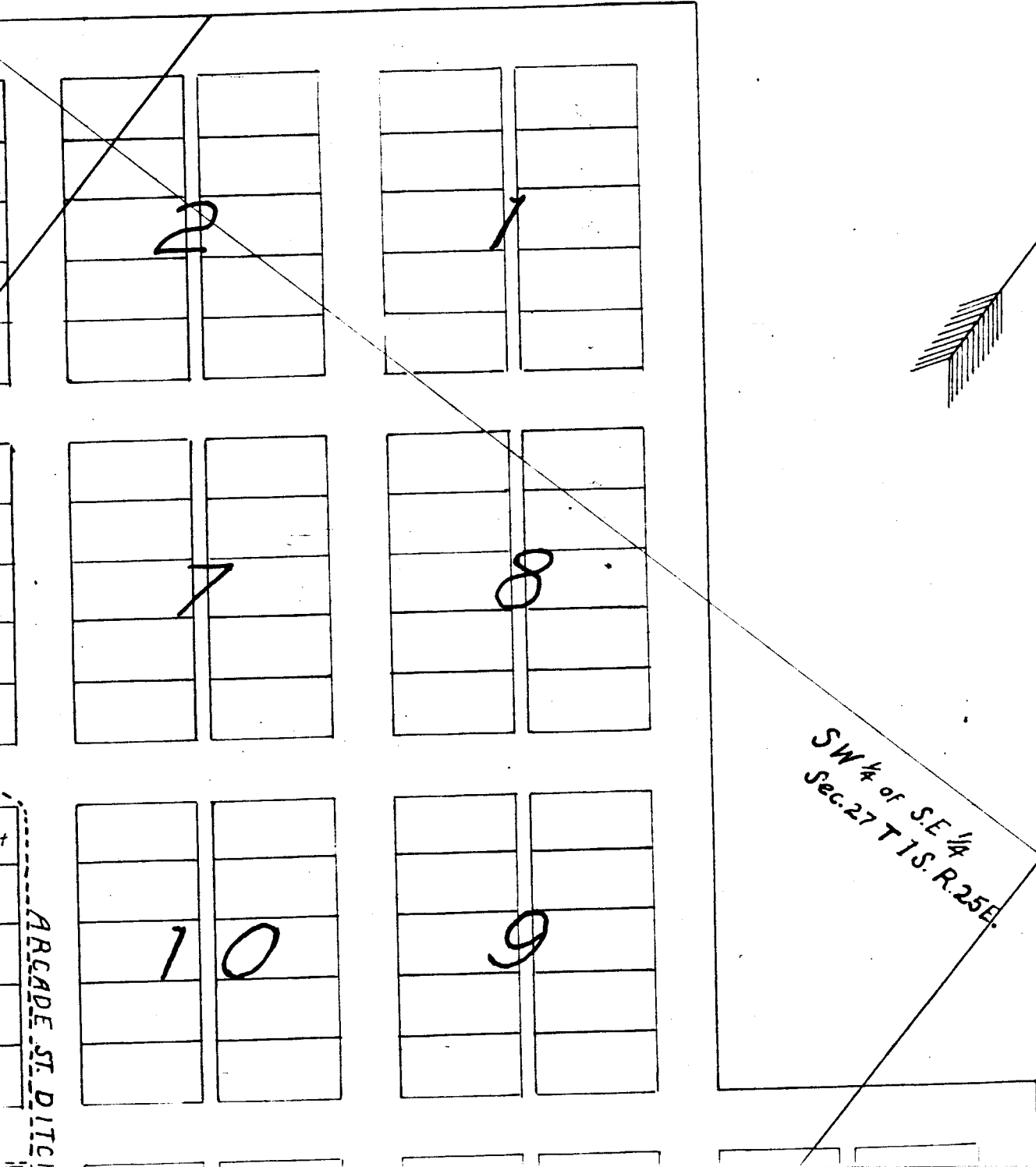
John

ARCADE ST. DITCH

Mill Race

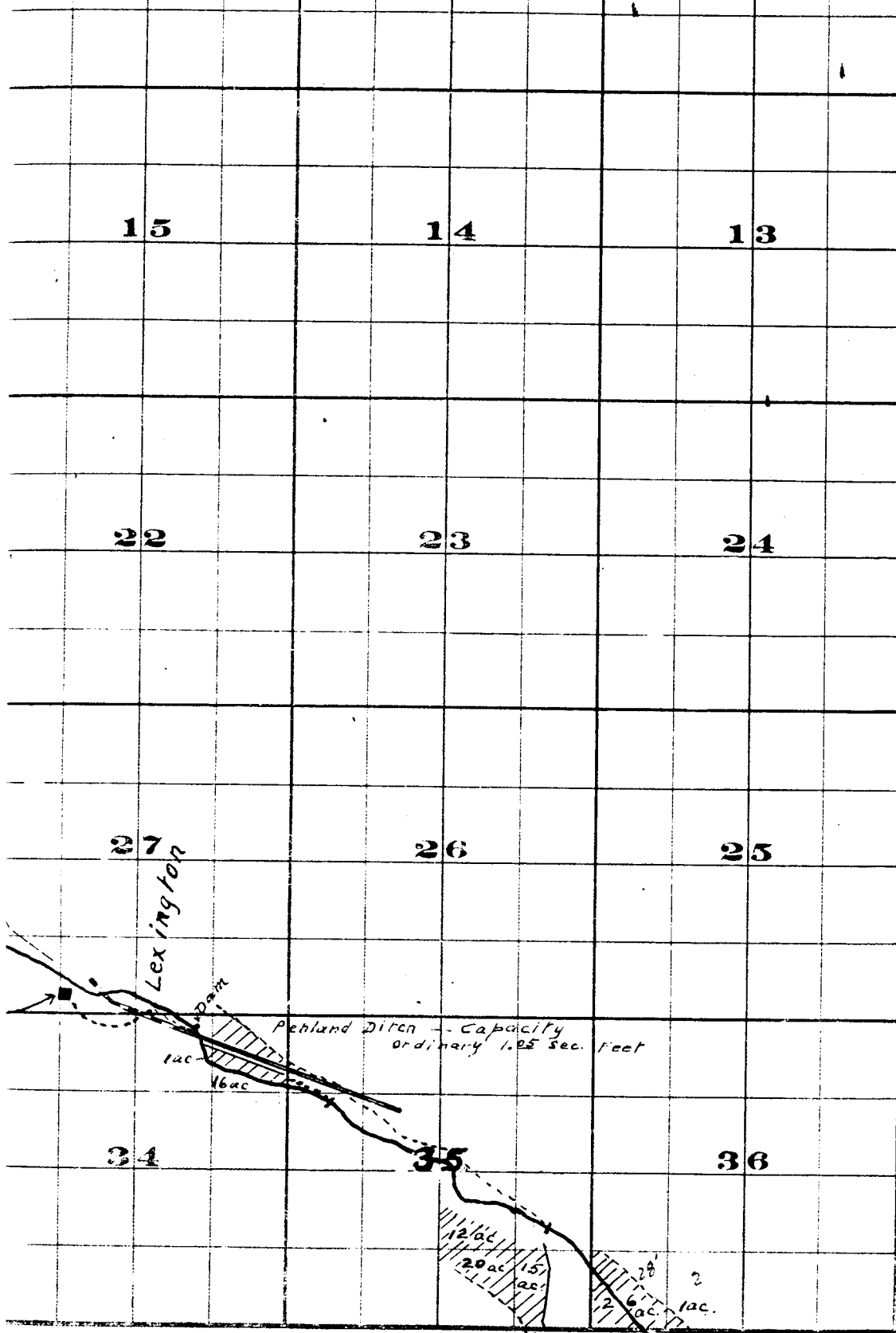


TION



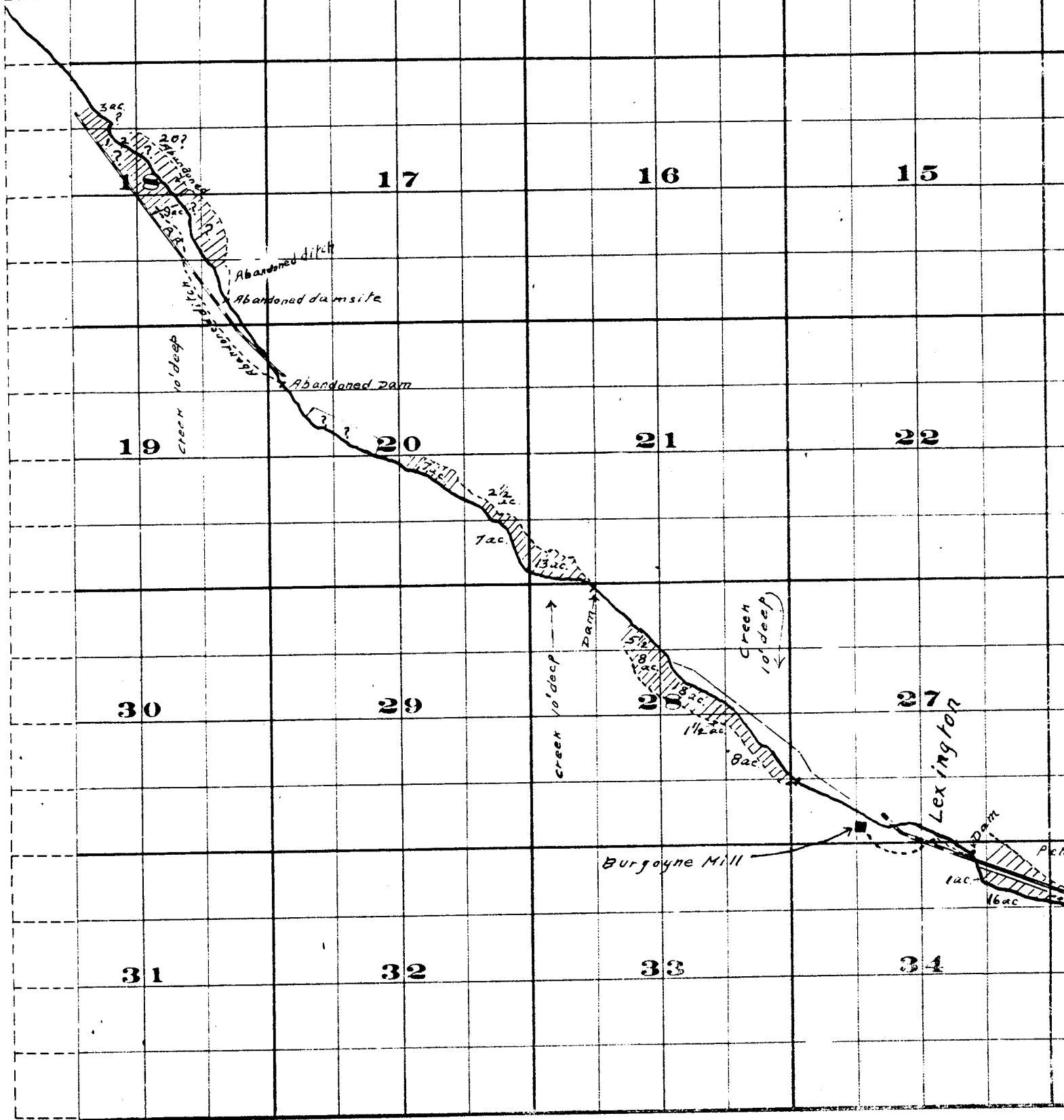
SW 1/4 of S.E. 1/4
Sec. 27 T 1 S. R. 25 E.

ARCADIE ST. DITCH



FROM OFFICE OF THE STATE ENGINEER, SALEM, OREGON

Willow Creek Adjudication.



THE W. H. PRISTOL CO. PRINTERS & BOUNDERS, 117 N. 3RD ST., PHOENIX, ARIZ.

Surveyed by R.D. Cooper - July 1909

John H. Lewis - State Engineer

Examined July 14, 1909.

Township 1 S. , R:

