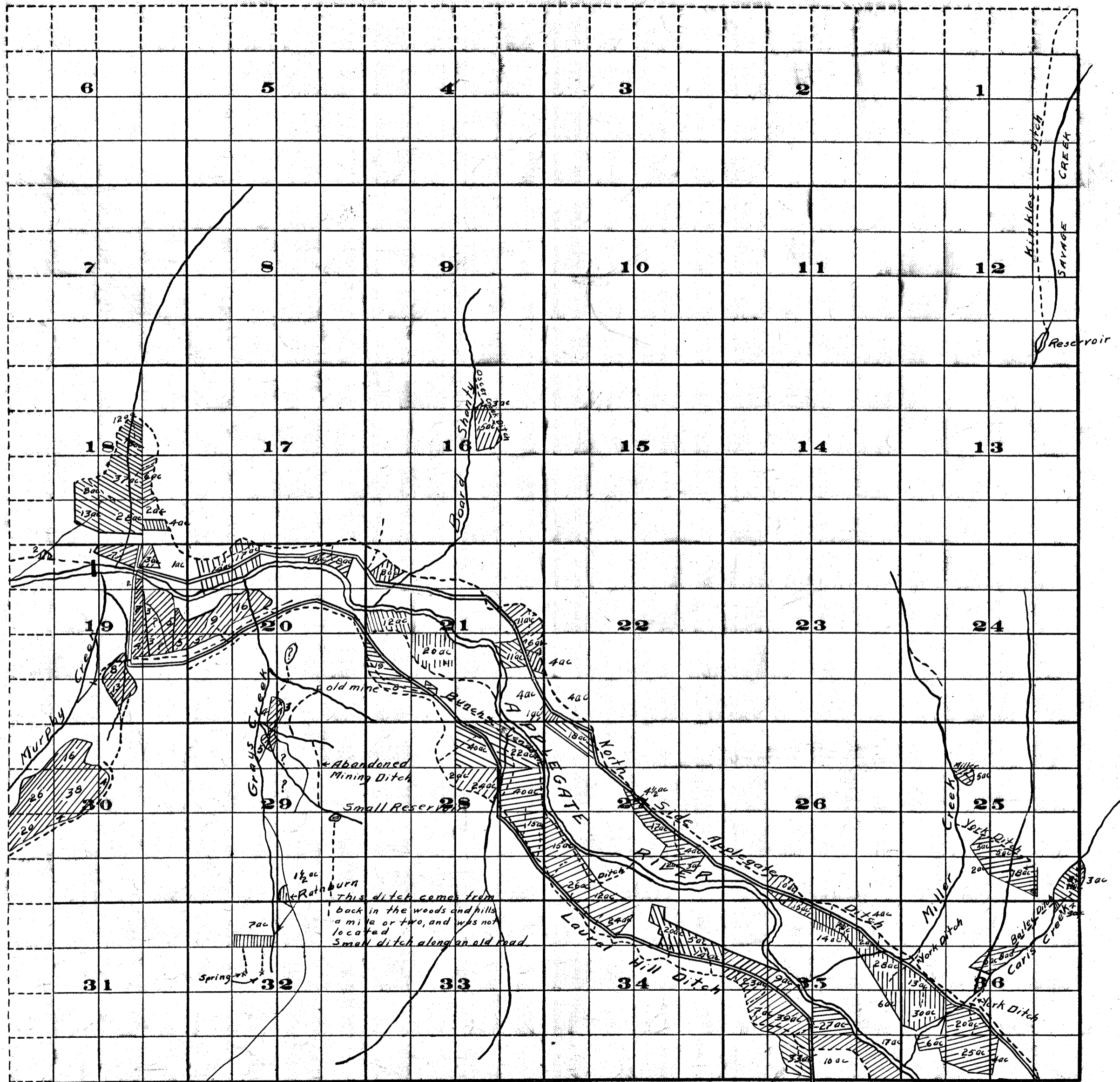


Township 37S, Range 5W.



Survey by R.D. Cooper Dec. 1909 and by J.S. McMahon April 1910

FROM OFFICE OF THE STATE ENGINEER, SALEM, OREGON

M. D.  
D.F.M. 11/6-11

Scale of Feet.

Ajudication

Rogue River and Tributaries

John H Lewis State Engr.

Examined Sept. 18, 1911