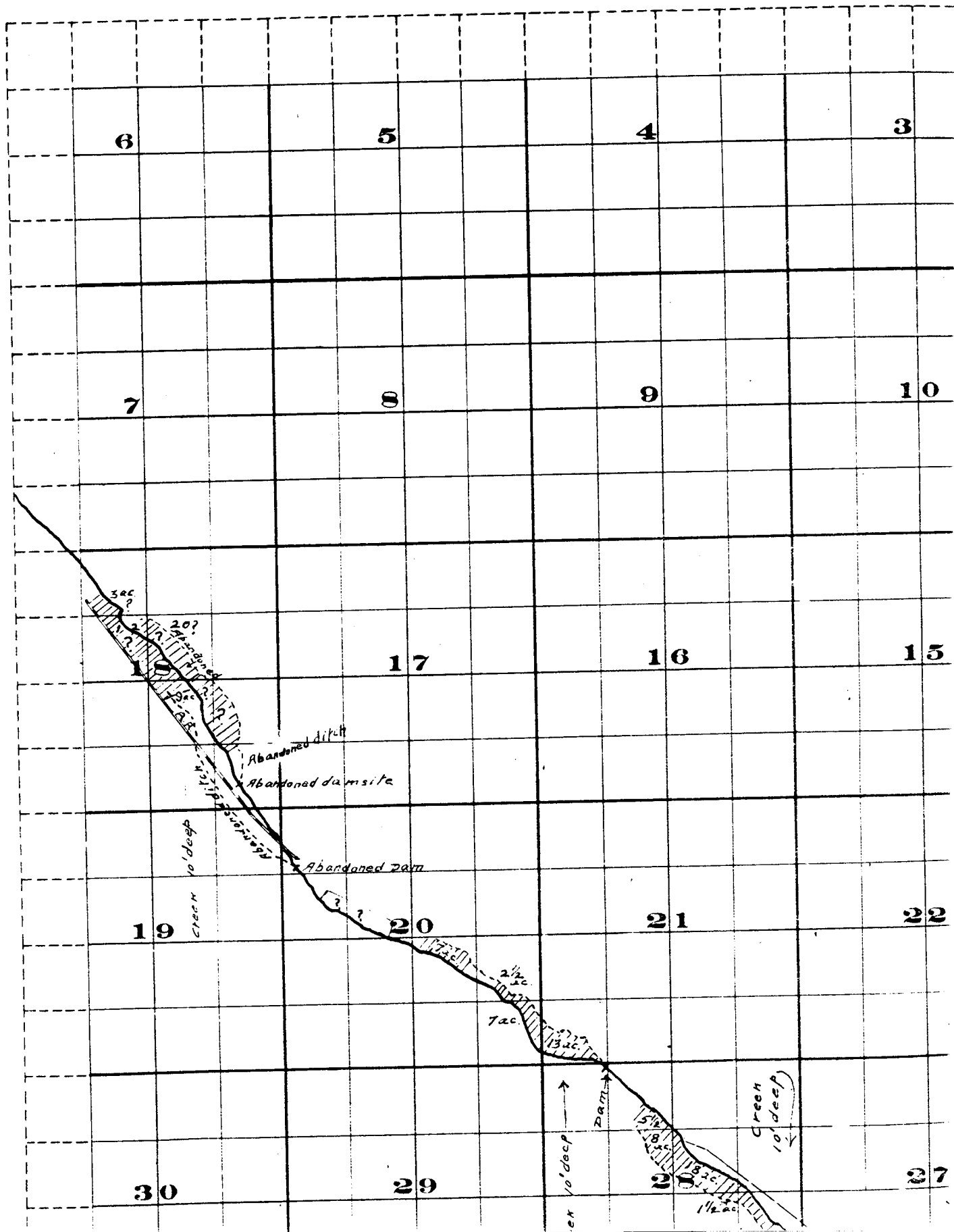
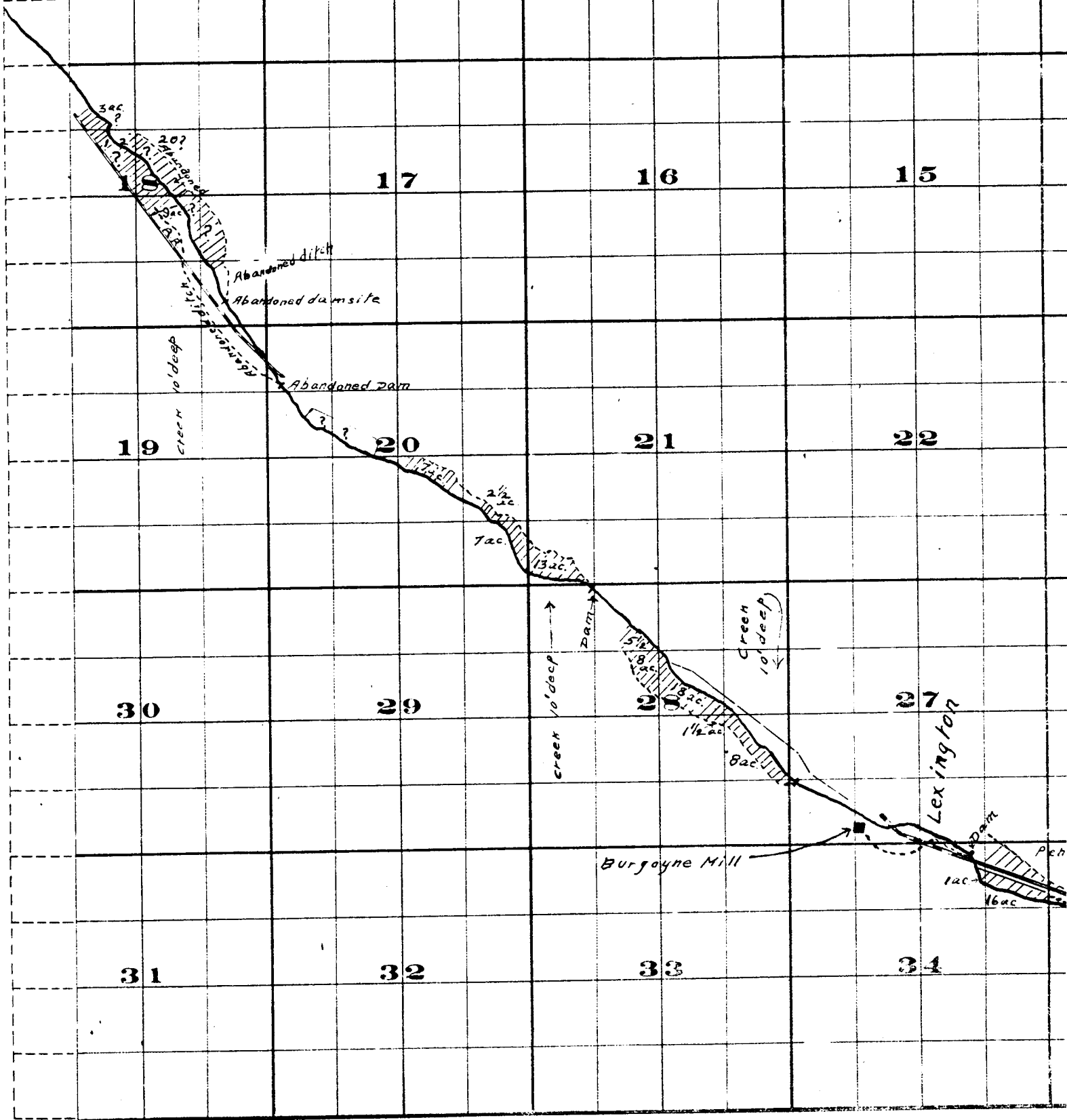


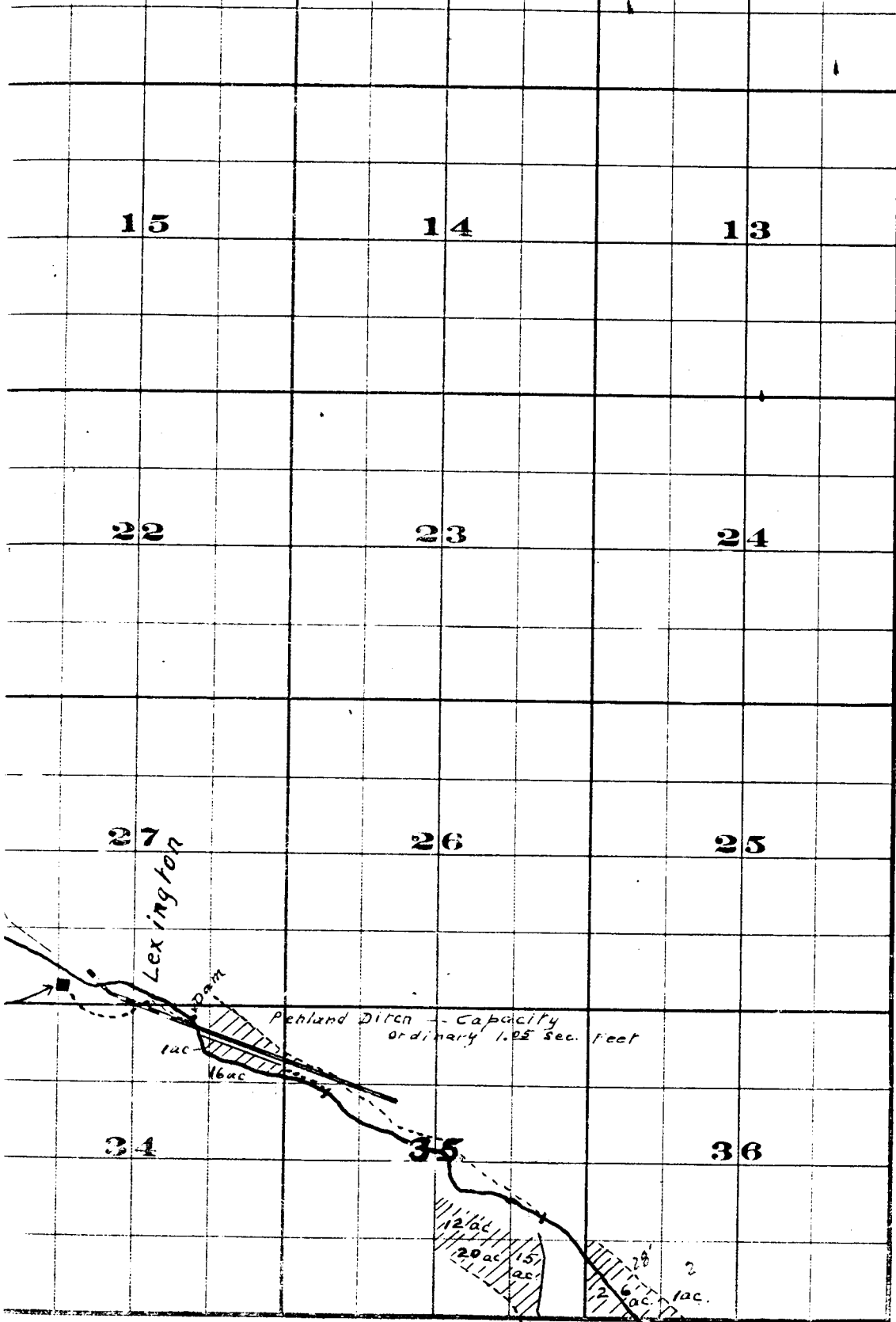
Township 1 S. , R.





THE S. A. PRISTOL CO. PRINTERS & BOUNDERS, 117 N. 3RD ST., PHOENIX, ARIZ.

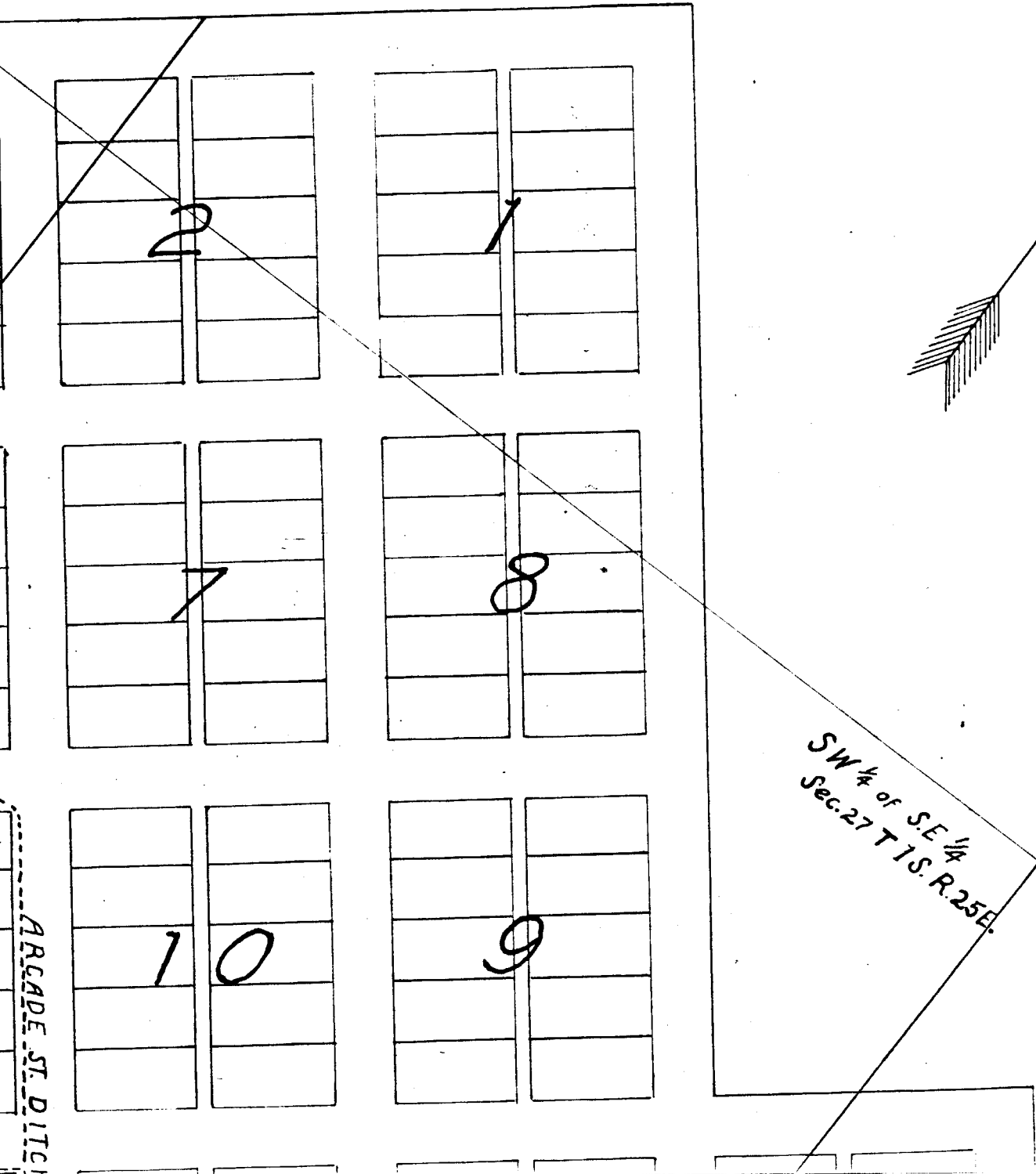
Surveyed by R. D. Gooper - July 1909
 John H. Lewis - State Engineer
 Examined July 14, 1909.



FROM OFFICE OF THE STATE ENGINEER, SALEM, OREGON

Willow Creek Adjudication.

TON



LEXINGTON

2	1

2	2

4	

3	

Sarah Booher
Sarah Booher
Sarah Booher
Sarah Booher
Sarah Booher
Sarah Booher

Sarah Booher
Sarah Booher
Sarah Booher
Sarah Booher
Sarah Booher
Sarah Booher

Ruth Barnett
Ruth Barnett

WE Pointer

JM White
JM White

2

Mrs Boothby
Mrs Boothby

Joe Eskelson
Joe Eskelson
Joe Eskelson
Joe Eskelson
Joe Eskelson
Joe Eskelson

Mrs. C.A. Bengt
W.R. Monkers
W.R. Monkers
W.R. Monkers
W.R. Monkers
W.R. Monkers

WE Leach
Breeding
ER Balch Trustee for Congregational Church

WG Scott
WG Scott
WG Scott
Mrs. Beymer
Mrs. Beymer

Ellis

John

John

John

ARCADE ST. DITCH

Mill

Boce

Ellis

John

John

John



1 Lot = 1/6 Acre

Note - Lots in Which Names Are Shown Are Irrigated

John H. Lewis - State Engineer Examined J

7	

8	

10	

9	

SW 1/4 of S.E. 1/4
Sec. 27 T 15. R. 25 E.

ARCADE ST. DITCH

John McMillion	
John McMillion	
John McMillion	5
John McMillion	
John McMillion	

J.E. Gentry	A.M. Zink
J.E. Gentry	A.M. Zink
1	6
	F. Beymer
	W.F. Barnett
	W.F. Barnett

Peter McCabe	E.S. Duran
Peter McCabe	E.S. Duran
Peter McCabe	E.S. Duran
W.F. Barnett	E.S. Duran

1	8
Mrs. Beymer	
Mrs. Beymer	

	Frank Parker
W.B. McAllister	Roy McAllister
W.B. McAllister	7
Mrs. S.J. Boothby	E.W. Moyers
Mrs. S.J. Boothby	E.W. Moyers

10	1
9	2
8	3
7	4
6	5

PENLAND DITCH

All lots numbered the same

Scale 150 Ft. = 1 in

Lexington.
15. 25 E.

mined July 14, 1909.