

7	

8	

10	

9	

SW 1/4 of SE 1/4  
Sec. 27 T 15. R. 25 E.

ARCADE ST. DITCH

John McMillion	
John McMillion	
John McMillion	5
John McMillion	
John McMillion	

J.E. Gentry	A.M. Zink
J.E. Gentry	A.M. Zink
1	6
	F. Beymer
	W.F. Barnett
	W.F. Barnett

Peter McCabe	E.S. Duran
Peter McCabe	E.S. Duran
Peter McCabe	E.S. Duran
W.F. Barnett	E.S. Duran

1	8
Mrs. Beymer	
Mrs. Beymer	

	Frank Parker
W.B. McAllister	Roy McAllister
W.B. McAllister	7
Mrs. S.J. Boothby	E.W. Moyers
Mrs. S.J. Boothby	E.W. Moyers

10	1
9	2
8	3
7	4
6	5

PENLAND DITCH

All lots numbered the same

Scale 150 Ft. = 1 in

Lexington.

15. 25 E.

mined July 14, 1909.



1 Lot = 1/6 Acre

Note - Lots in Which Names Are Shown Are Irrigated

John H. Lewis - State Engineer      Examined J.

# LEXINGTON

2	1

2	2

4	



Sarah Booher
Sarah Booher
Sarah Booher
Sarah Booher
Sarah Booher

Sarah Booher
Sarah Booher
Sarah Booher
Sarah Booher
Sarah Booher

Ruth Barnett
Ruth Barnett

WE Pointer

JM White
JM White



2

Mrs Boothby
Mrs Boothby

Joe Eskelson
Joe Eskelson
Joe Eskelson
Joe Eskelson
Joe Eskelson

Mrs. C.A. Bengt
W.R. Monkers
W.R. Monkers
W.R. Monkers
W.R. Monkers

WE Leach
Breeding
E.A. Bolch Trustee for Congregational Church

WG Scott
WG Scott
WG Scott
Mrs. Beymer
Mrs. Beymer


MILL PLACE

Ellis

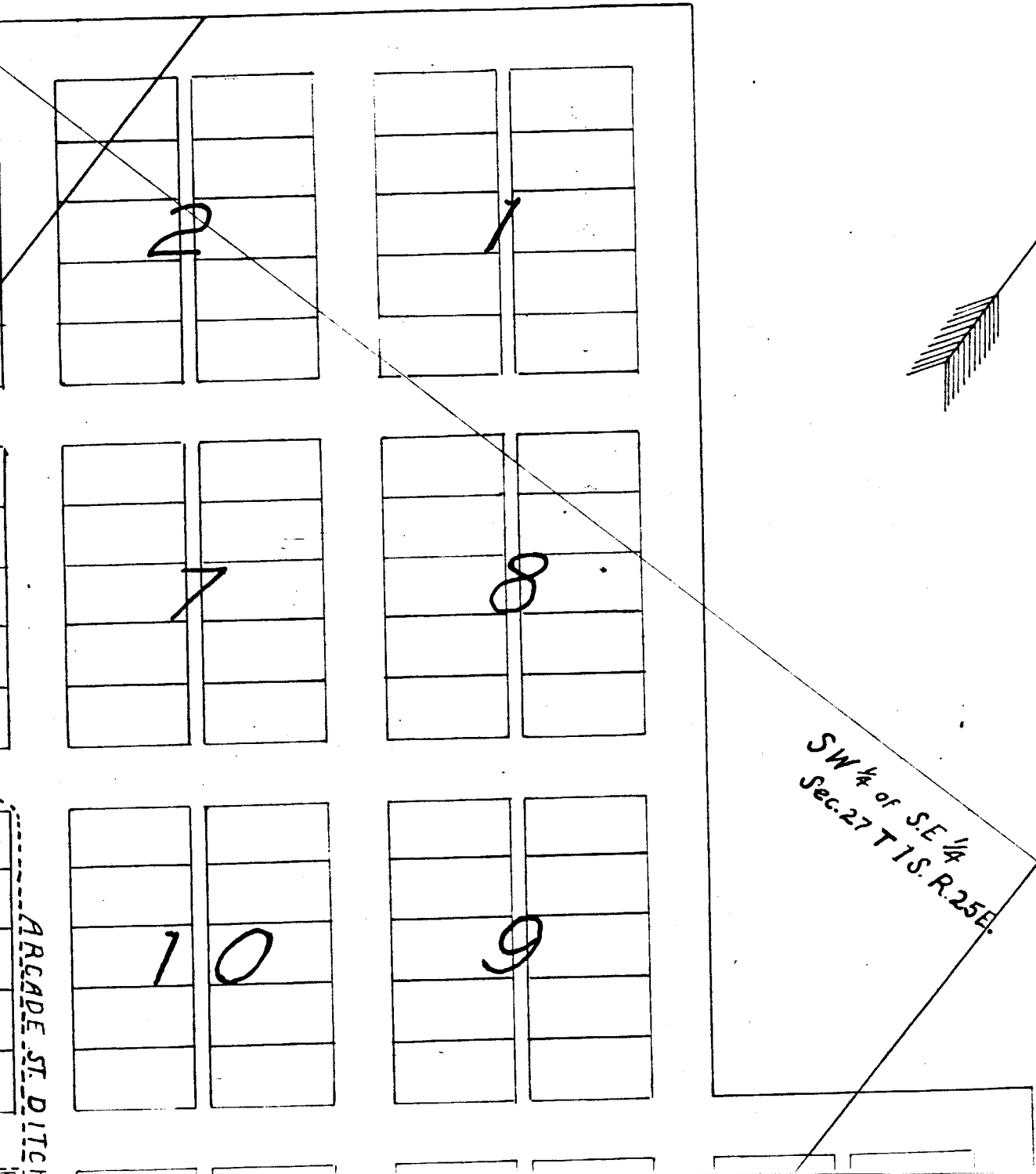
John

John McMillan

John

ARCADE ST. DITCH

TON



15

14

13

22

23

24

27

26

25

34

35

36

Lexington

DAM

Pehland Ditch - Capacity ordinary 1.25 Sec. Feet

1 ac

16 ac

12 ac

20 ac

15 ac

20 ac

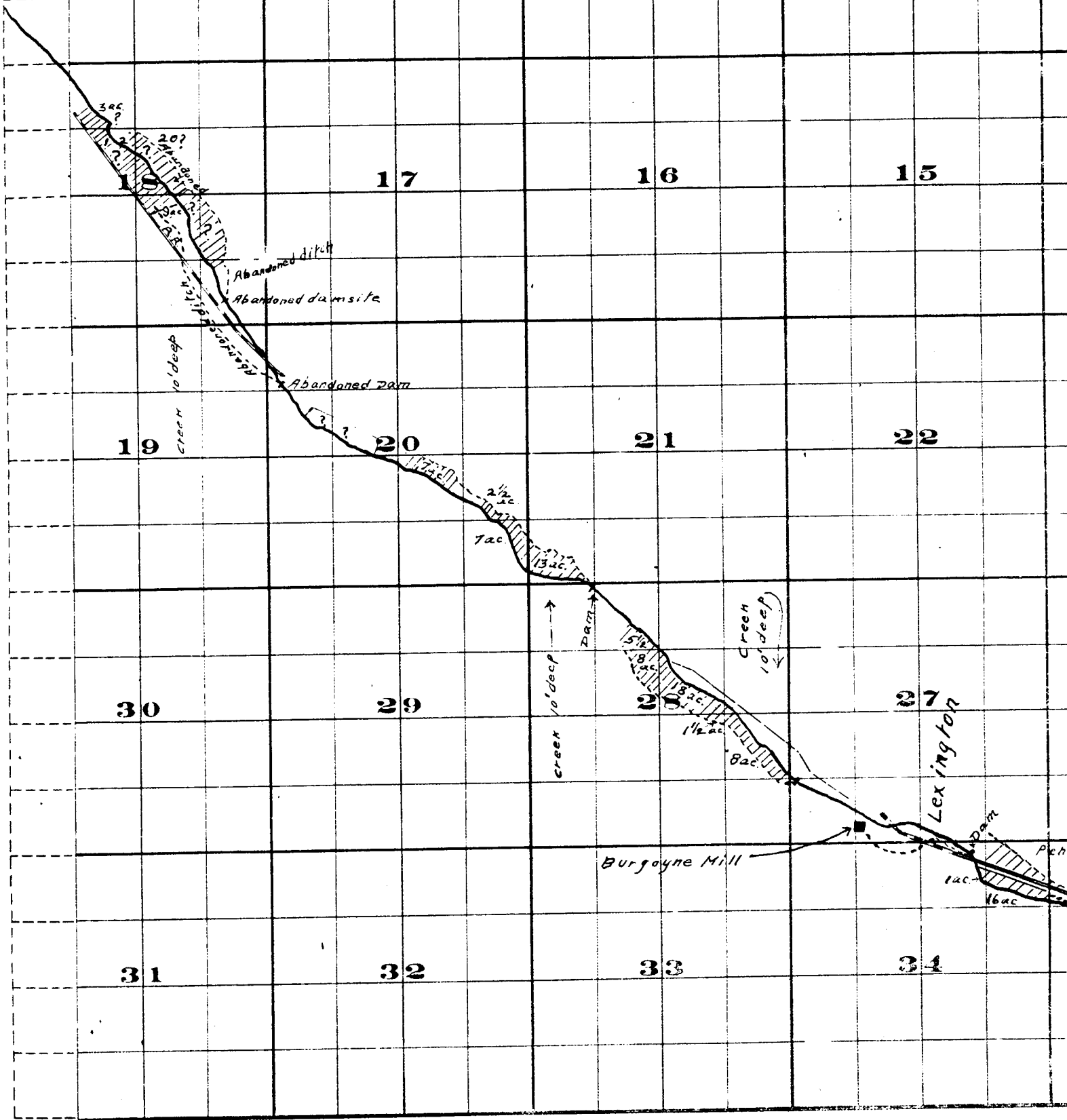
2 ac

26 ac

1 ac

FROM OFFICE OF THE STATE ENGINEER, SALEM, OREGON

*Willow Creek Adjudication.*



THE S. A. BRISTOL CO. PRINTERS & BOOKBINDERS 117 WEST 7TH

Surveyed by R.D. Cooper - July 1909

John H. Lewis - State Engineer

Examined July 14, 1909.

Township 15. , R:

