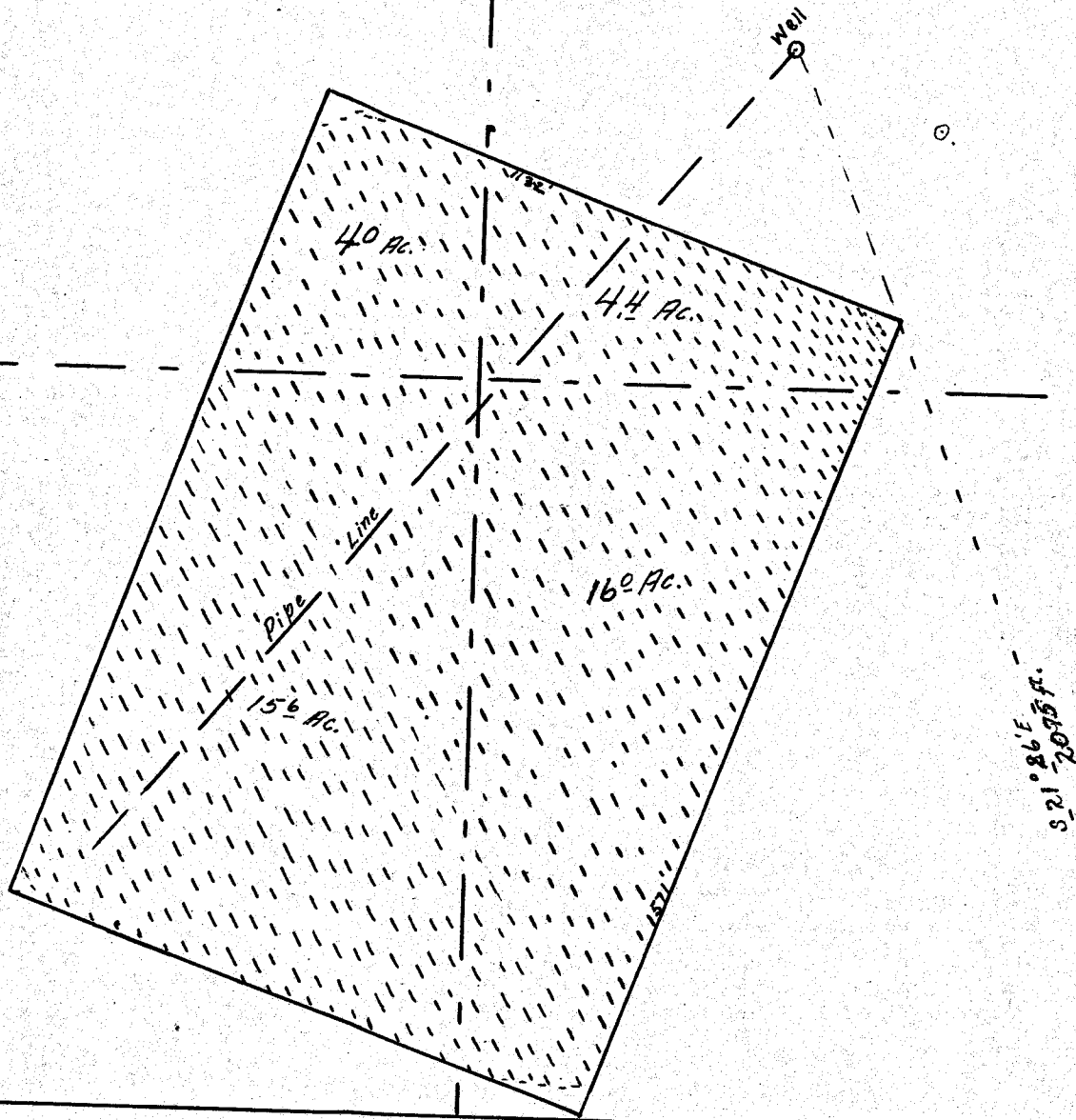


cc. cor.



SW Cor.  
Sec 36  
T.2N.  
R.12E. W.M.

Permit No. U-292, Oakdale Farm, in Wasco County  
 Area and Location of land irrigated from Well in Section 36, T.2N., R.12E. W.M.  
 Map Made from Notes on survey made November 28, 1949.  
 Area Checks with Map of Application  
 Roger Wilhelm.

Applied for No. U-193  
 11-29-49

