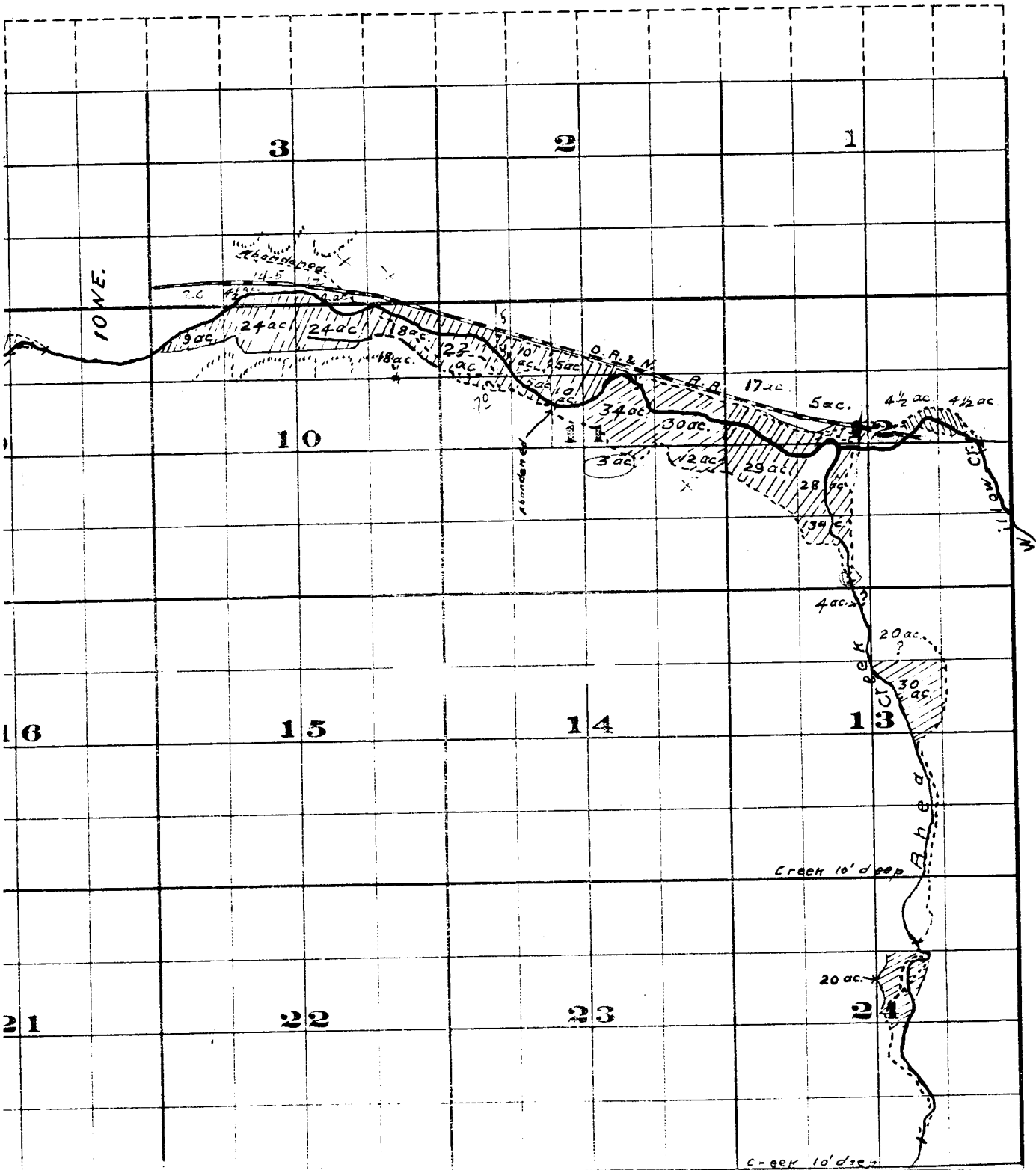
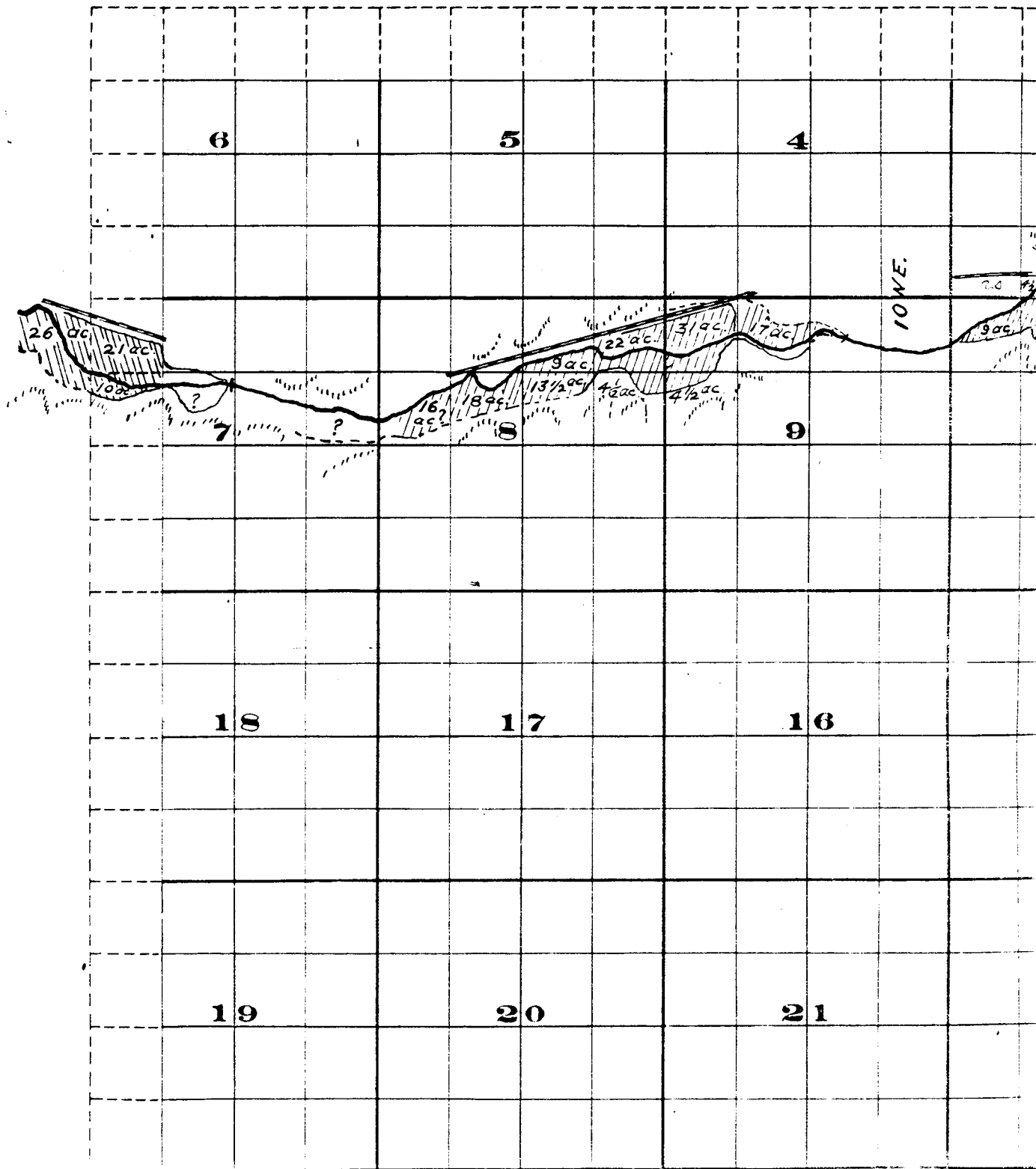
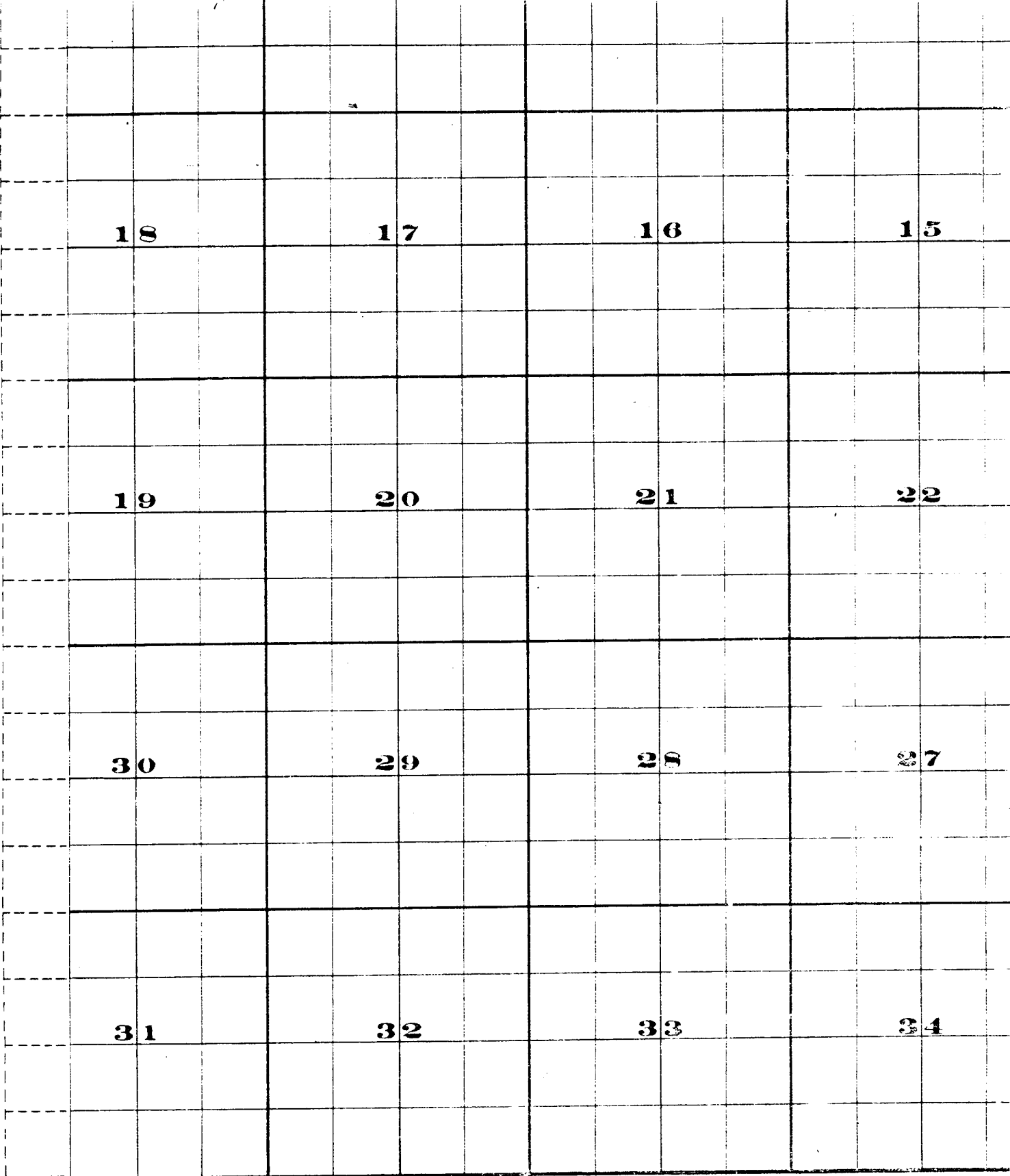


# Range 24 E.W.M.

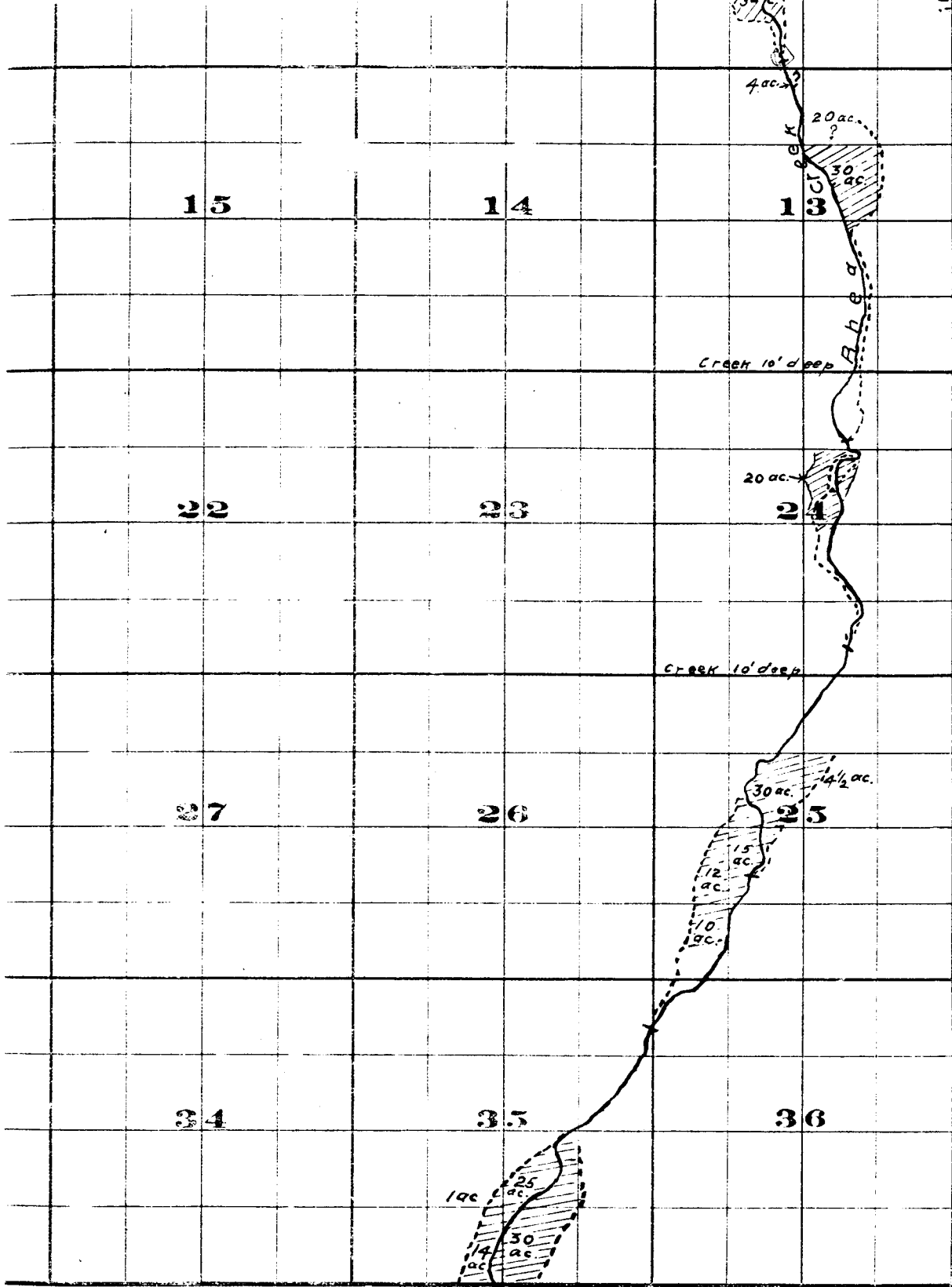


# Township 15,





*Surveyed by R.D. Cooper July 1909*  
*John H. Lewis - State Engineer*  
*Examined July 14, 1909.*



FROM OFFICE OF THE STATE ENGINEER, SALEM, OREGON

*Willow Creek Adjudication.*

15.24E

P. 11. 375