

SW 1/4 of SE 1/4  
Sec. 27 T 1 S. R. 25 E.

ARCADE ST. DITCH

7	

8	

10	

9	

John McMillion	
John McMillion	
John McMillion	5
John McMillion	
John McMillion	

J.E. Gentry	A.M. Zink
J.E. Gentry	A.M. Zink
1	6
	F. Beymer
	W.F. Barnett
	W.F. Barnett

Peter McCabe	E.S. Duran
Peter McCabe	E.S. Duran
Peter McCabe	E.S. Duran
W.F. Barnett	E.S. Duran

1	8
Mrs. Beymer	
Mrs. Beymer	

	Frank Parker
W.B. McAllister	Roy McAllister
W.B. McAllister	7
Mrs. S.J. Boothby	E.W. Moyers
Mrs. S.J. Boothby	E.W. Moyers

10	1
9	2
8	3
7	4
6	5

PENLAND DITCH

All lots numbered the same

Scale 150 Ft. = 1 in

Lexington.

1 S. 25 E.

mined July 14, 1909.



1 Lot = 1/6 Acre

Note - Lots in Which Names Are Shown Are Irrigated

John H. Lewis - State Engineer

Examined J.

# LEXINGTON

2	1

2	2

4	



Sarah Booher
Sarah Booher
Sarah Booher
Sarah Booher
Sarah Booher
Sarah Booher

Sarah Booher
Sarah Booher
Sarah Booher
Sarah Booher
Sarah Booher
Sarah Booher

Ruth Barnett
Ruth Barnett

WE Pointer

JM White
JM White




Mrs Boothby
Mrs Boothby

Joe Eskelson
Joe Eskelson
Joe Eskelson
Joe Eskelson
Joe Eskelson

Mrs. C.A. Bengt
W.R. Monkers
W.R. Monkers
W.R. Monkers
W.R. Monkers

WE Leach
Breeding
EA Bolesch Trustee for Congregational Church

WG Scott
WG Scott
WG Scott
Mrs. Beymer
Mrs. Beymer


Mill Race

Ellis

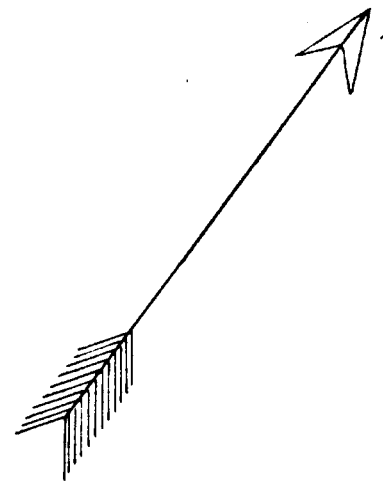
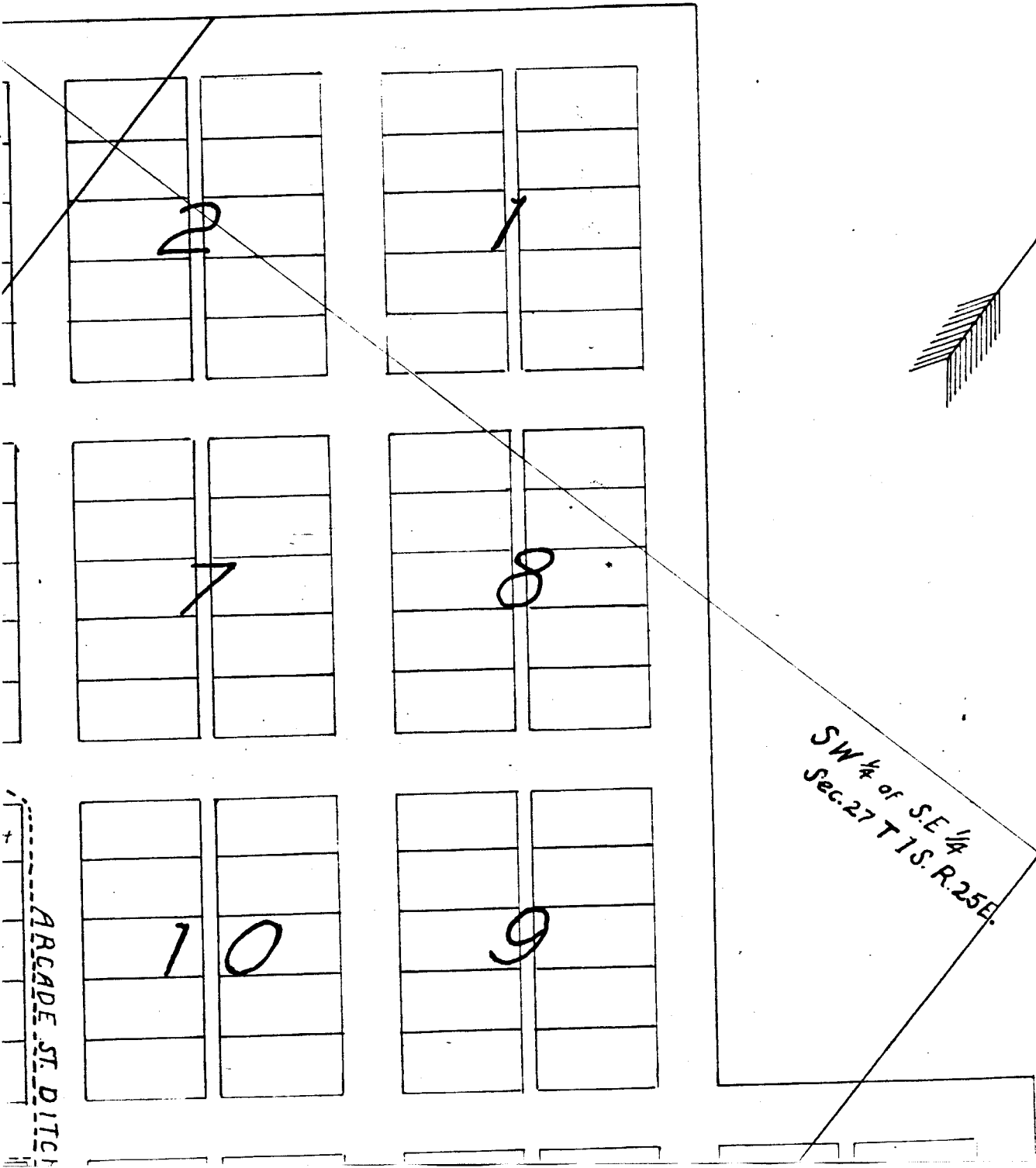
John

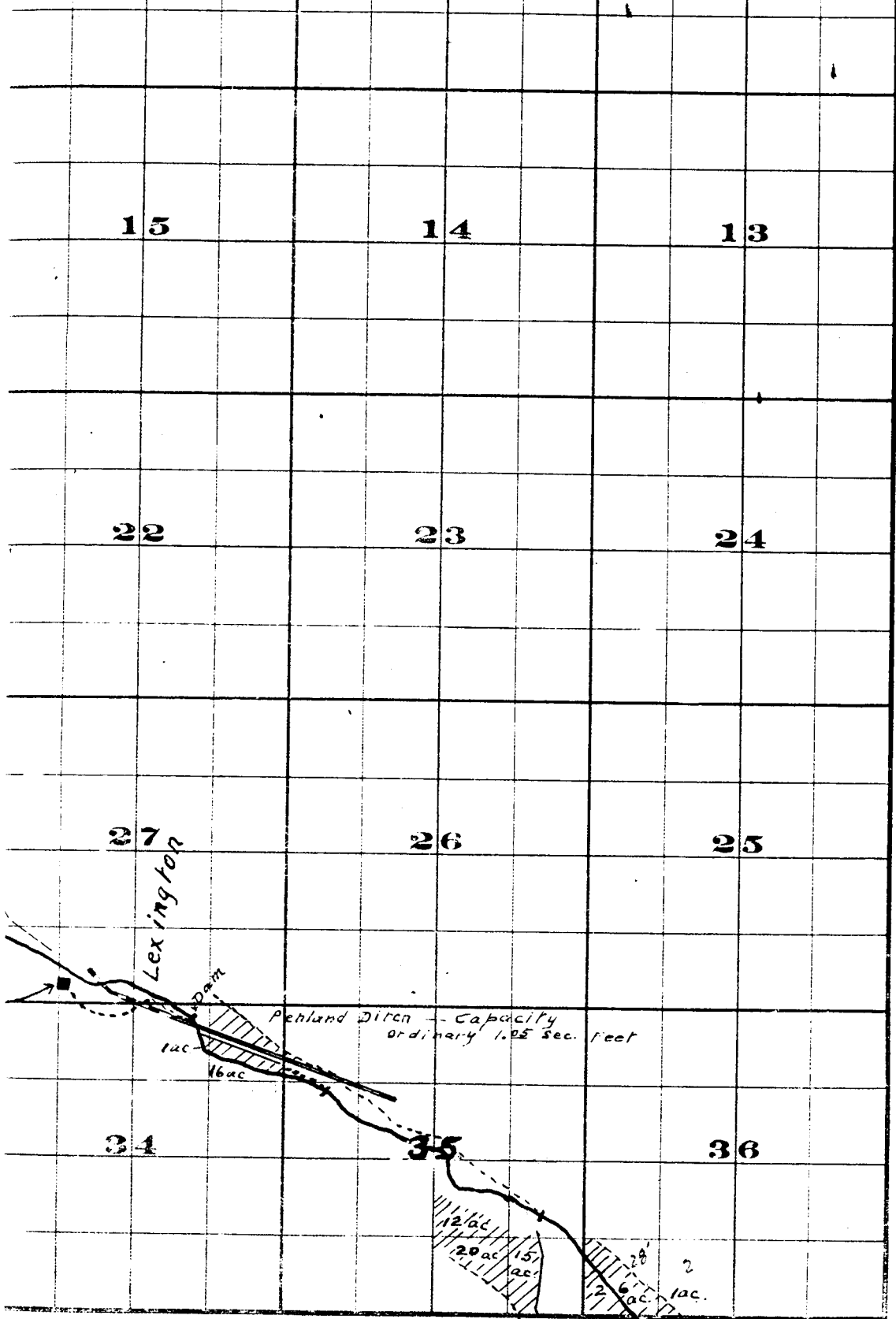
John McMillan

John

ARCADE ST DITCH

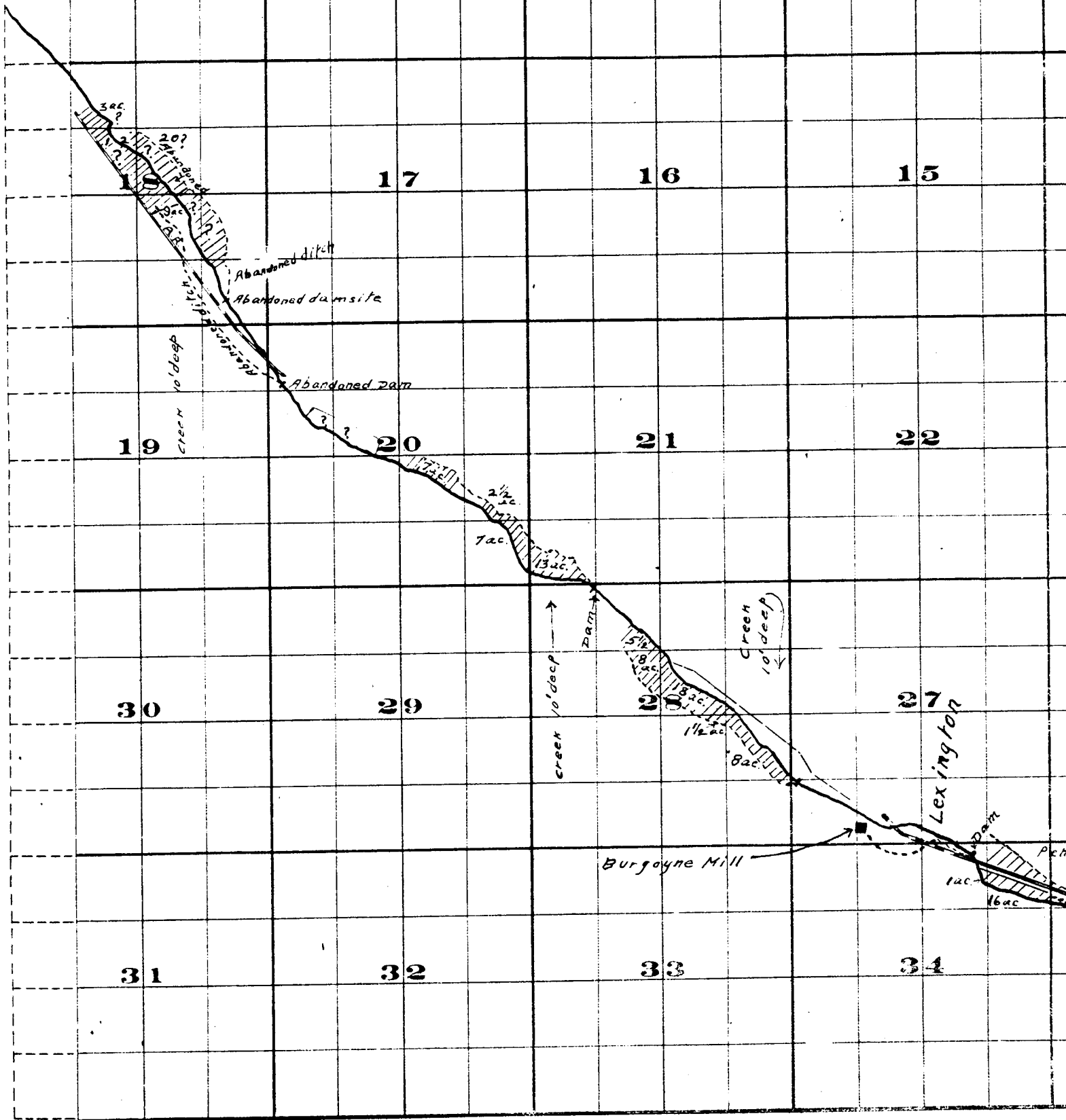
GON





FROM OFFICE OF THE STATE ENGINEER, SALEM, OREGON

*Willow Creek Adjudication.*



THE BRISTOL CO. PRINTERS & BOUNDING. 111 N. 1ST ST. W.C.

Surveyed by R.D. Cooper - July 1909  
 John H. Lewis - State Engineer  
 Examined July 14, 1909.

Township 1 S. , R:

