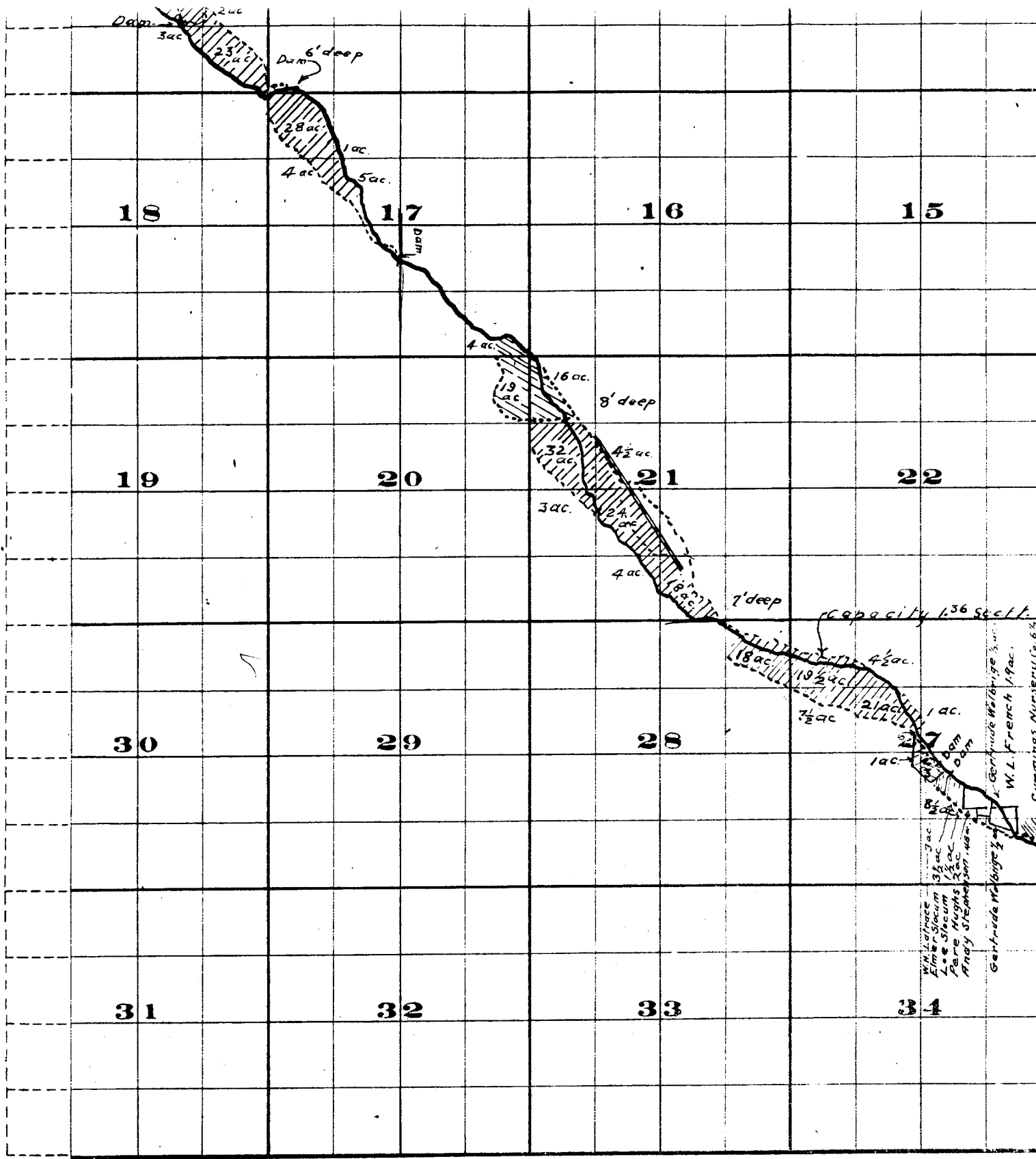


Willow Creek Adjudication



Part 3 S. 26
2 S. 26

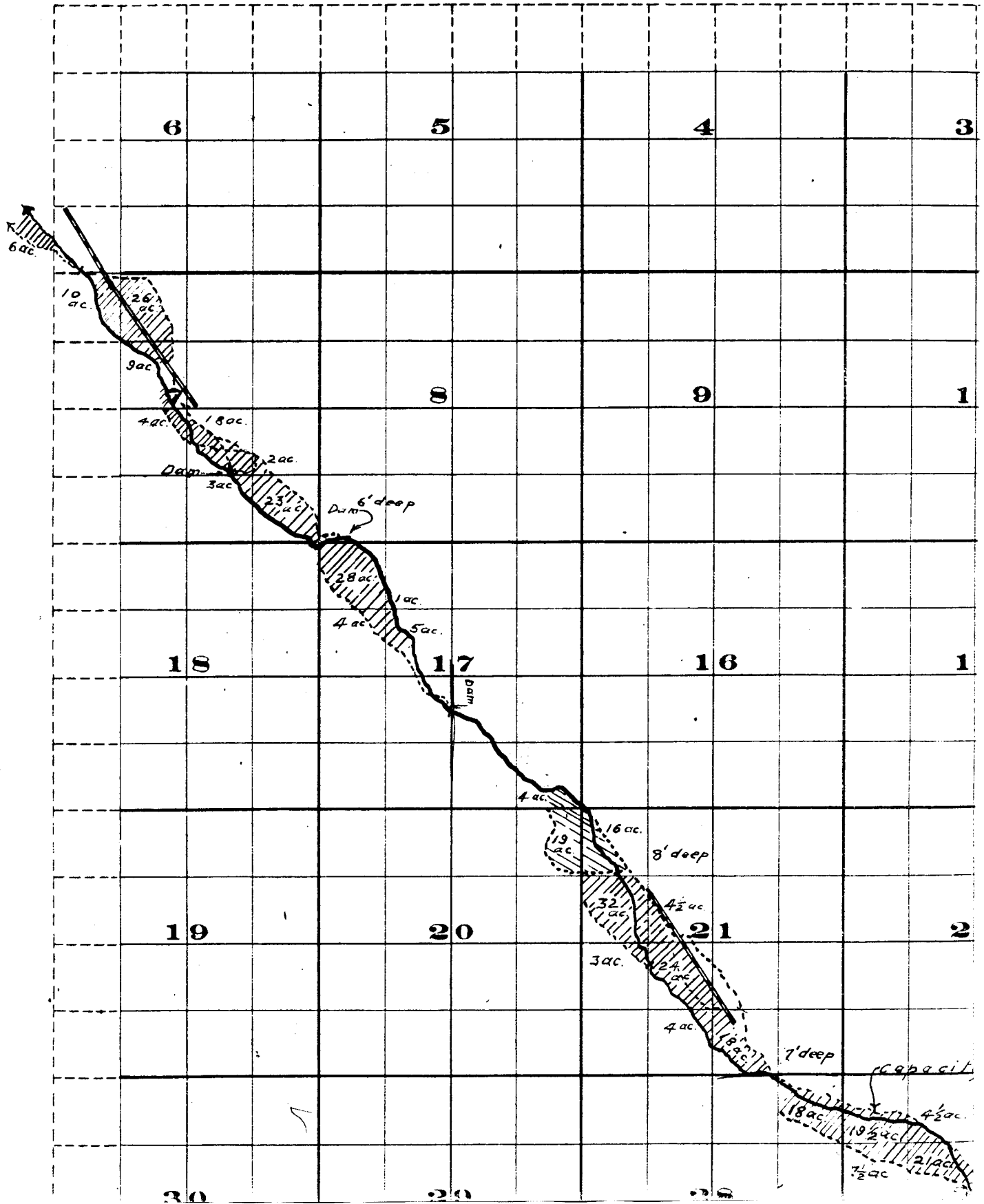


THE B. BRISTOL CO., PRINTERS & BOUNDERS, CHRYSLER BLDG. N.Y.C.

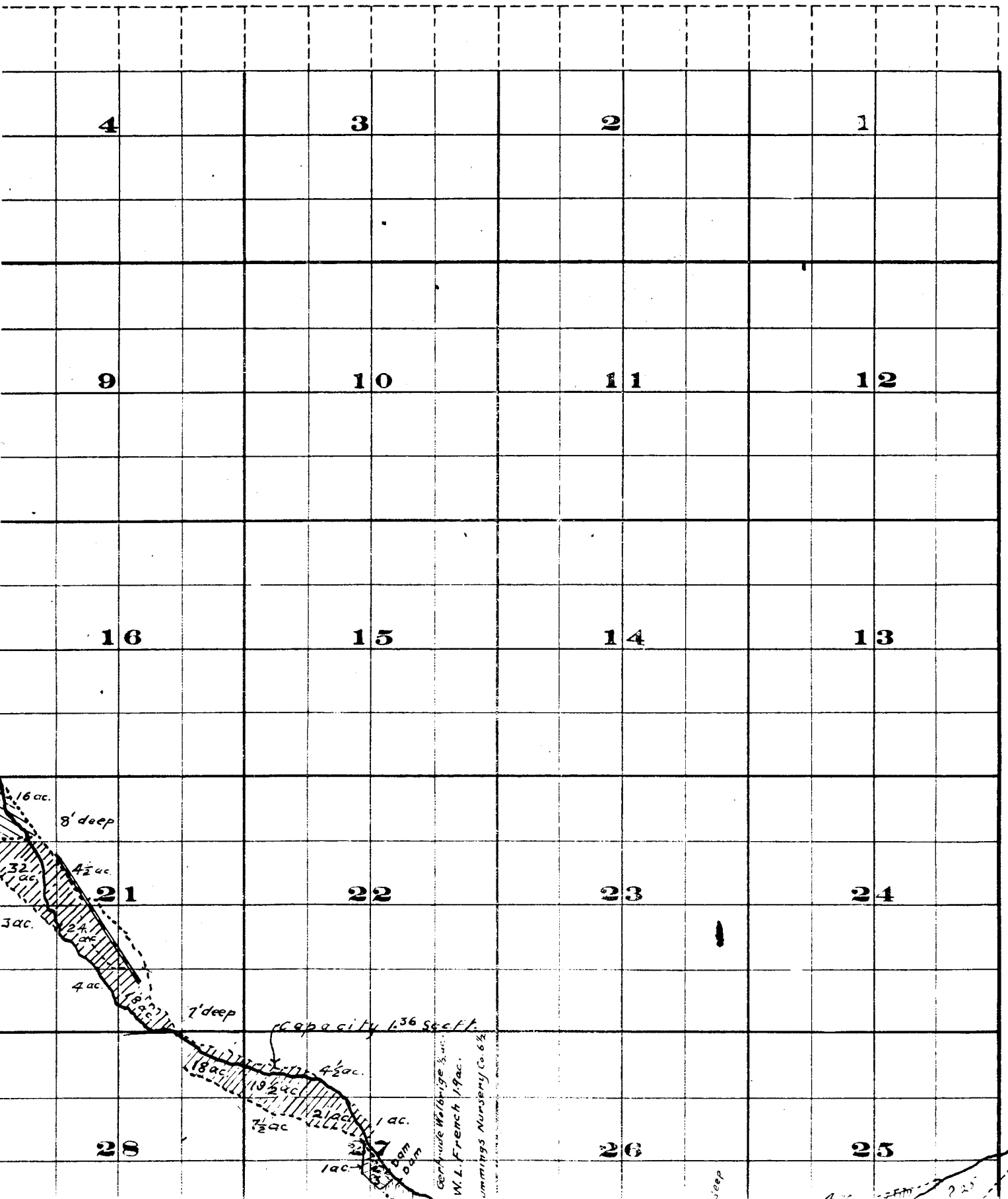
Surveyed by R.D. Cooper July 1909
 John H. Lewis - State Engineer.
 Examined July 14, 1909.



Township 2 S.

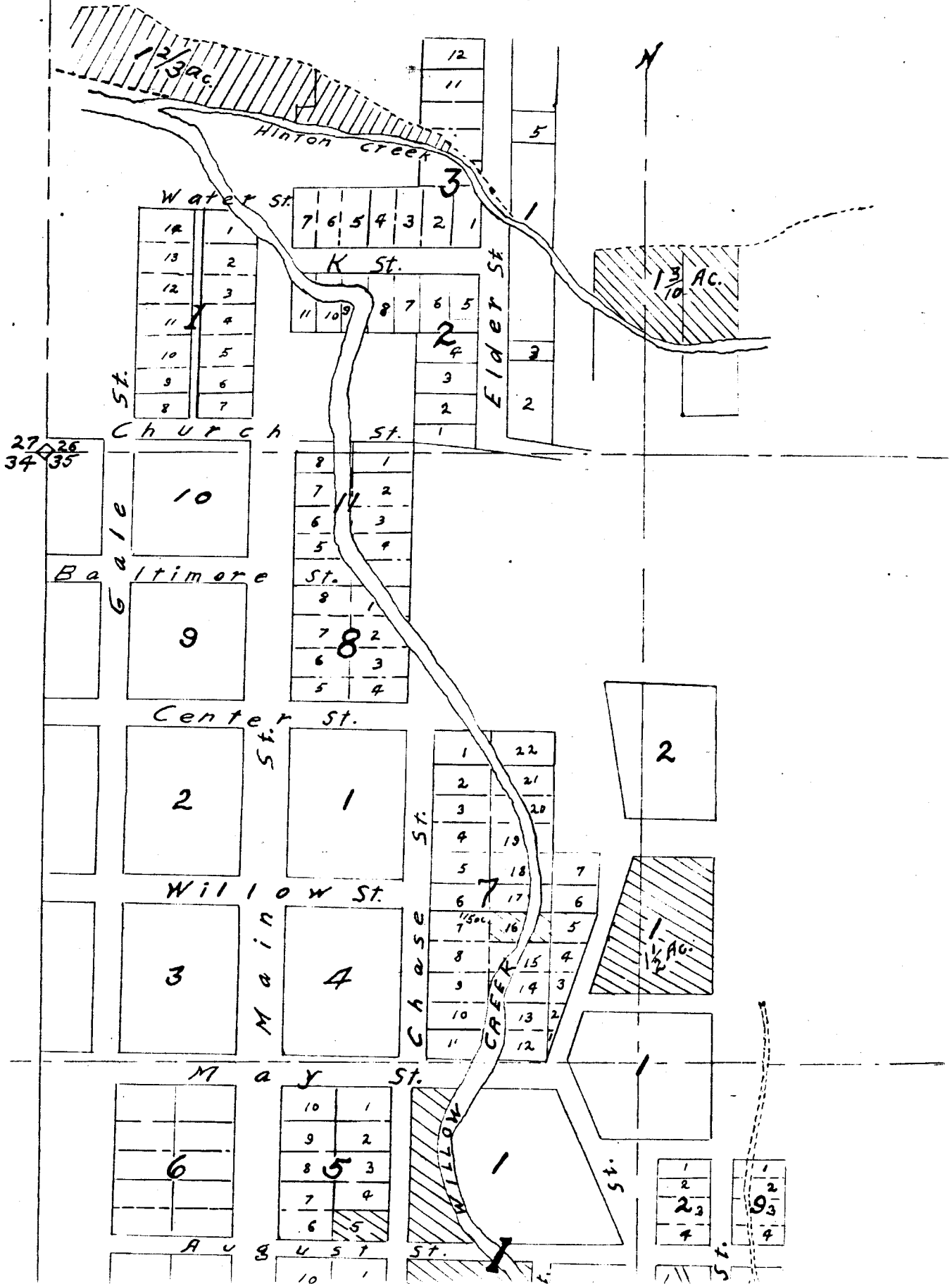


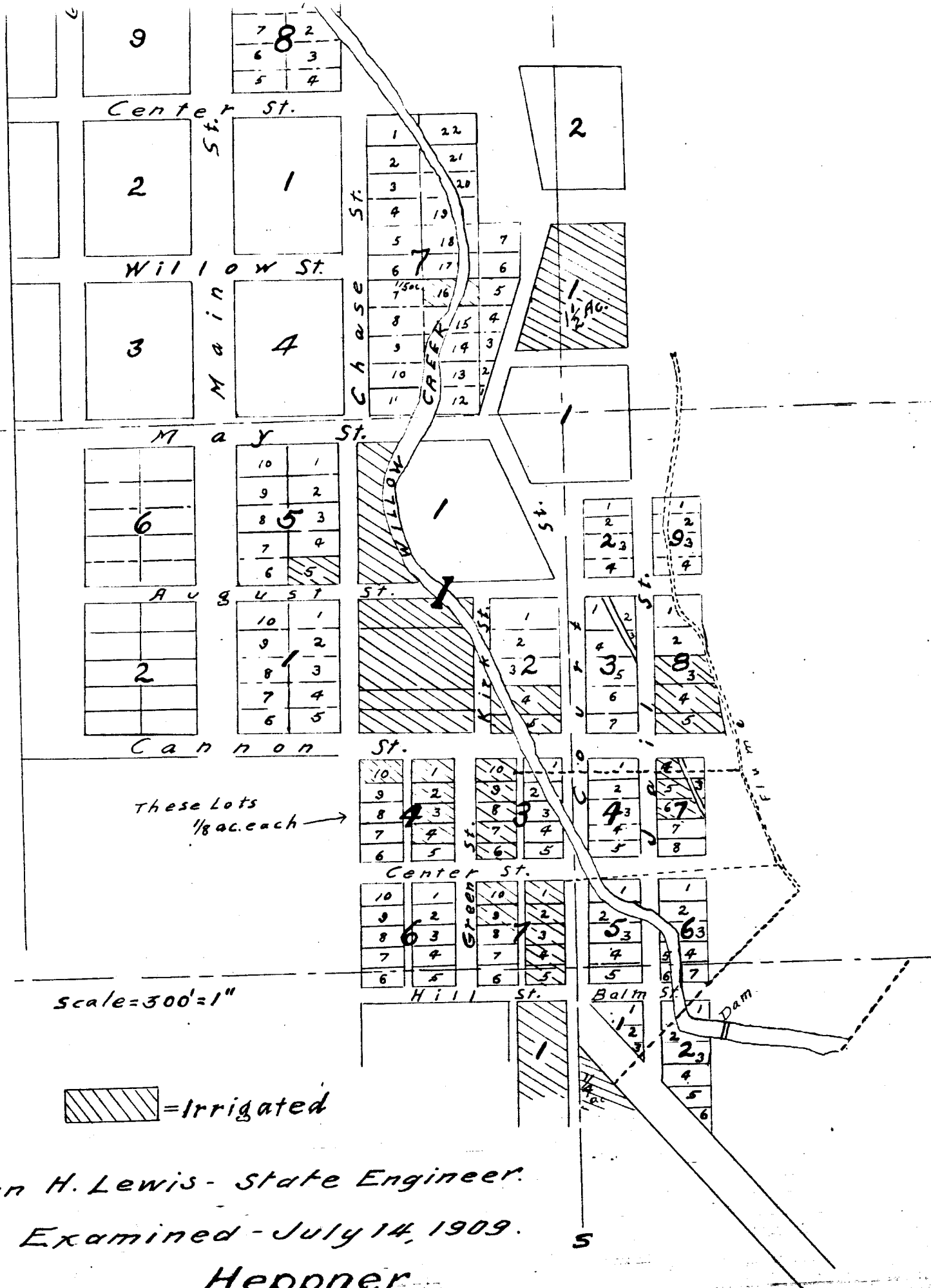
Range 26 E.W.M.



HEPPNER


Situated in T. 25. R. 26E. W.M.





These Lots
1/8 ac. each →

scale = 300' = 1"

 = Irrigated

John H. Lewis - State Engineer.

Examined - July 14, 1909.

Heppner

2S. 26E