

| | |
|---|--|
| 7 | |
| | |
| | |

| | |
|---|--|
| 8 | |
| | |
| | |

SW 1/4 of S.E. 1/4
Sec. 27 T 15. R. 25 E.

| | |
|----|--|
| | |
| | |
| 10 | |
| | |
| | |

| | |
|---|--|
| | |
| | |
| 9 | |
| | |
| | |

ARCADE ST. DITCH

| | |
|----------------|---|
| John McMillion | |
| John McMillion | |
| John McMillion | 5 |
| John McMillion | |
| John McMillion | |

| | |
|-------------|--------------|
| J.E. Gentry | A.M. Zink |
| J.E. Gentry | A.M. Zink |
| 1 | 6 F. Beymer |
| | W.F. Barnett |
| | W.F. Barnett |

| | |
|--------------|------------|
| Peter McCabe | E.S. Duran |
| Peter McCabe | E.S. Duran |
| Peter McCabe | E.S. Duran |
| W.F. Barnett | E.S. Duran |
| | |

| | |
|-------------|---|
| | |
| | |
| 1 | 8 |
| Mrs. Beymer | |
| Mrs. Beymer | |

| | |
|-------------------|------------------|
| | Frank Parker |
| W.B. McAllister | Roy McAllister |
| W.B. McAllister | 7 Roy McAllister |
| Mrs. S.J. Boothby | E.W. Moyers |
| Mrs. S.J. Boothby | E.W. Moyers |

PENLAND DITCH

| | |
|----|---|
| 10 | 1 |
| 9 | 2 |
| 8 | 3 |
| 7 | 4 |
| 6 | 5 |

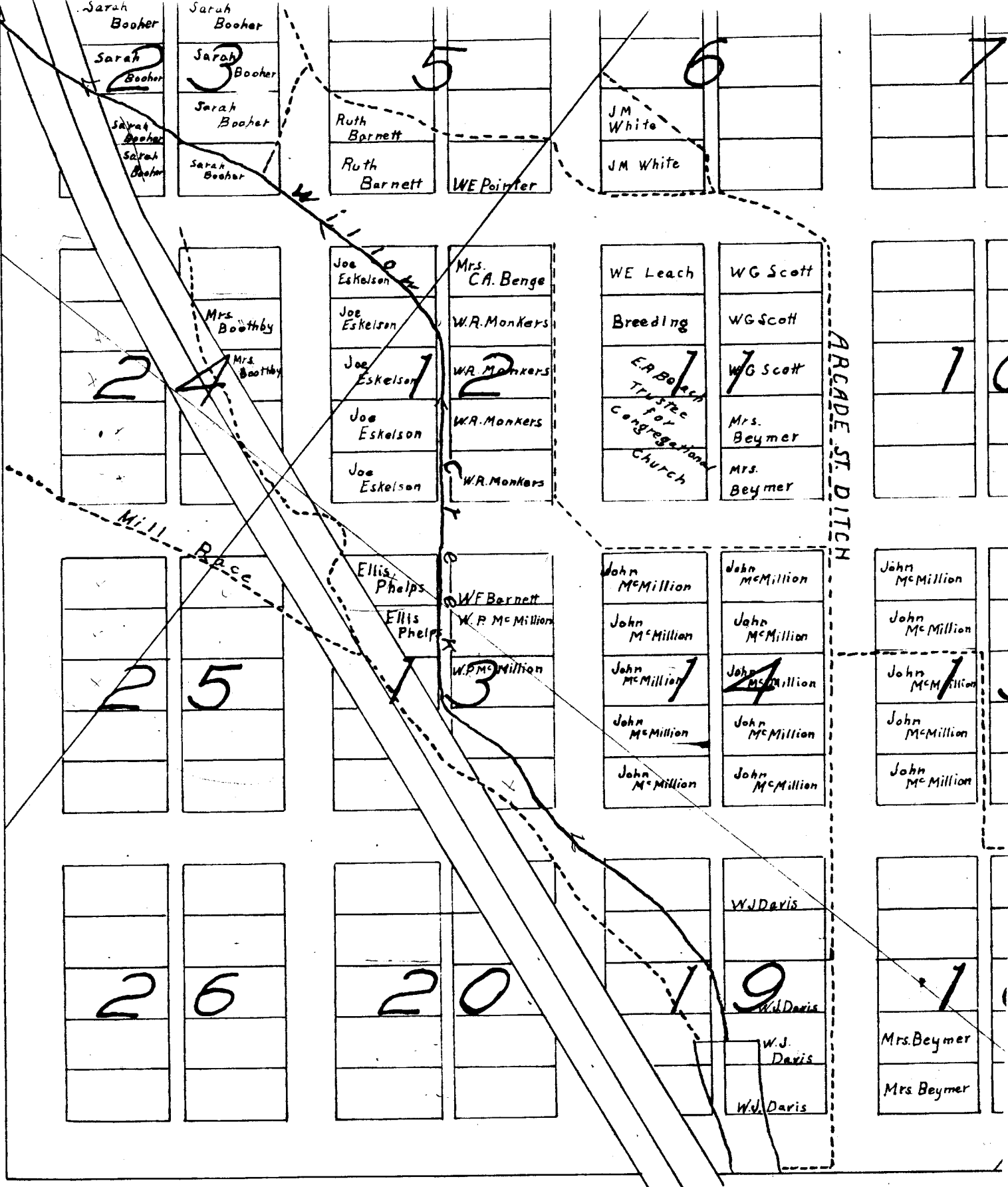
All lots numbered the same

Scale 150 Ft. = 1 in

Lexington.

15. 25 E.

mined July 14, 1909.



1 Lot = 1/6 Acre

Note - Lots in Which Names Are Shown Are Irrigated

John H. Lewis - State Engineer Examined J.

LEXINGTON

| | |
|---|---|
| | |
| | |
| 2 | 1 |
| | |
| | |

| | |
|---|---|
| | |
| 2 | 2 |
| | |
| | |
| | |

| | |
|--|---|
| | |
| | |
| | 4 |
| | |
| | |

| | |
|--|---|
| | |
| | |
| | 3 |
| | |
| | |

| | |
|--------------|--------------|
| Sarah Booher | |
| Sarah Booher | Sarah Booher |
| Sarah Booher | Sarah Booher |
| Sarah Booher | Sarah Booher |
| Sarah Booher | Sarah Booher |

| | |
|--------------|------------|
| | |
| | |
| | |
| | |
| Ruth Barnett | |
| Ruth Barnett | WE Pointer |

| | |
|----------|--|
| | |
| | |
| | |
| | |
| JM White | |
| JM White | |

| | |
|---|--------------|
| | |
| | Mrs. Boothby |
| | Mrs. Boothby |
| 2 | |
| | |
| | |

| | |
|--------------|-----------------|
| Joe Eskelson | Mrs. C.A. Benge |
| Joe Eskelson | W.R. Monkers |
| Joe Eskelson | W.R. Monkers |
| Joe Eskelson | W.R. Monkers |
| Joe Eskelson | W.R. Monkers |

| | |
|--|-------------|
| WE Leach | WG Scott |
| Breeding | WG Scott |
| E.A. Balch Trustee for Congregational Church | WG Scott |
| | Mrs. Beymer |
| | Mrs. Beymer |

Mill Race

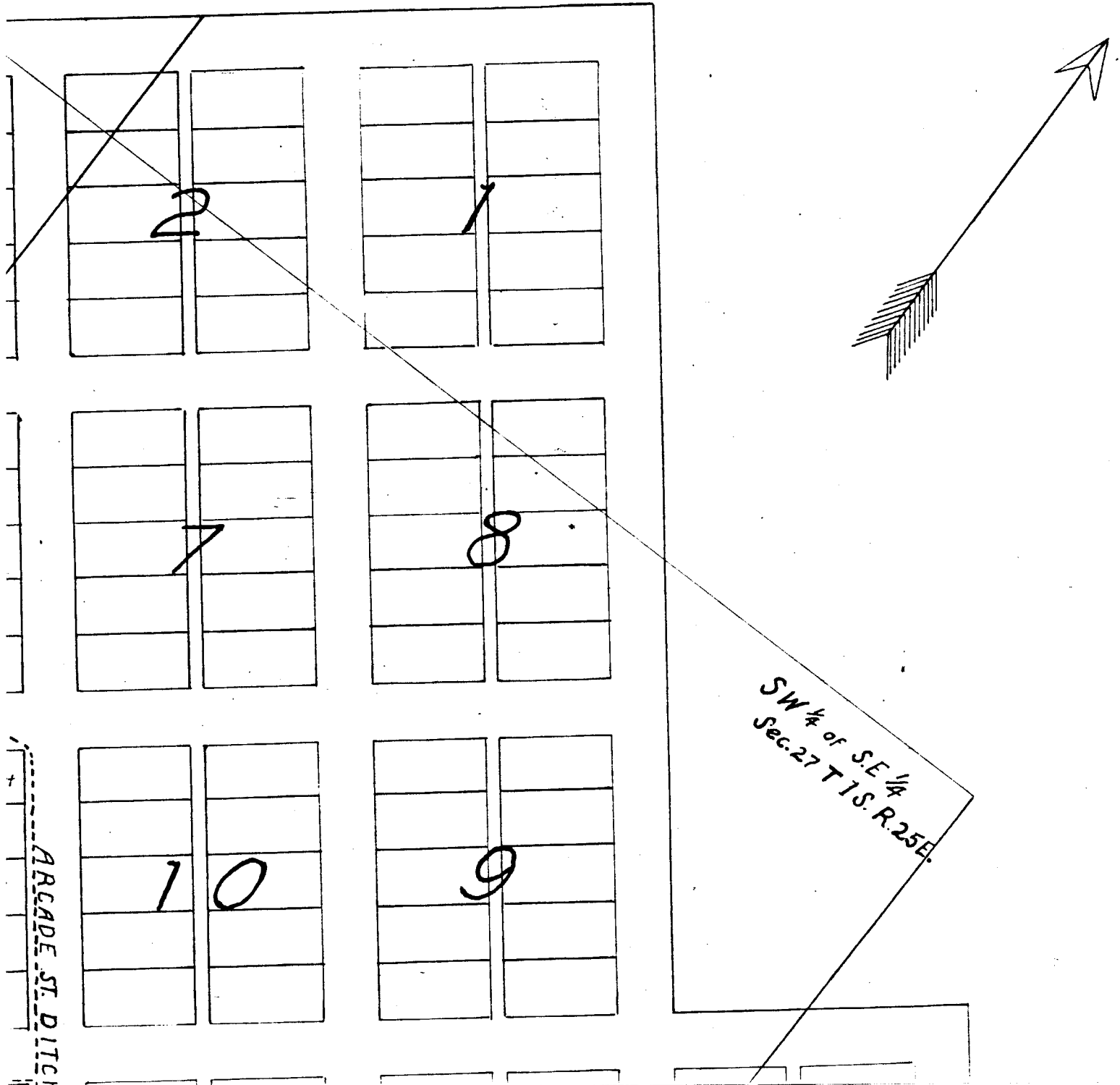
Ellis

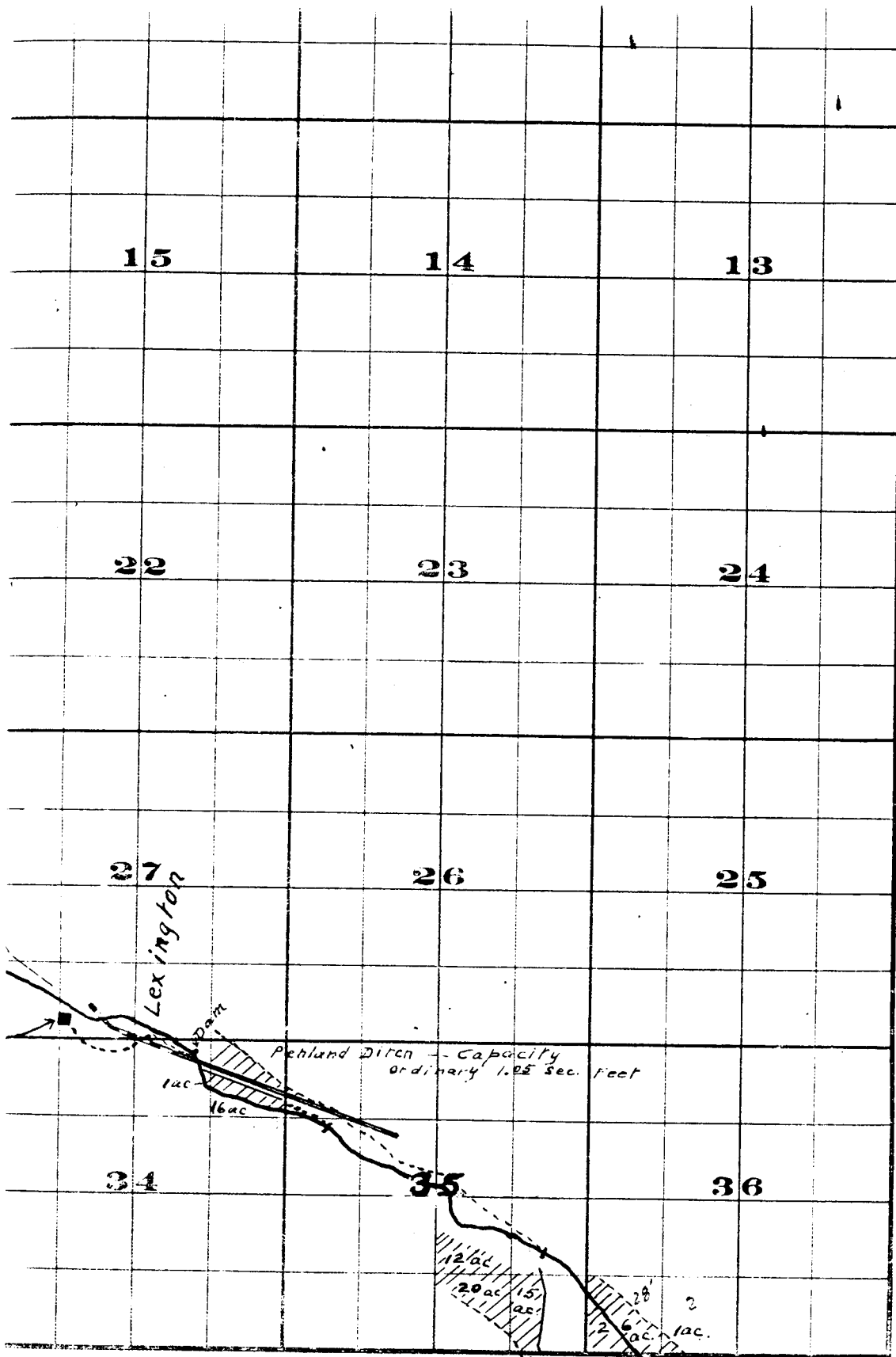
John

ARCADE ST. DITCH

John

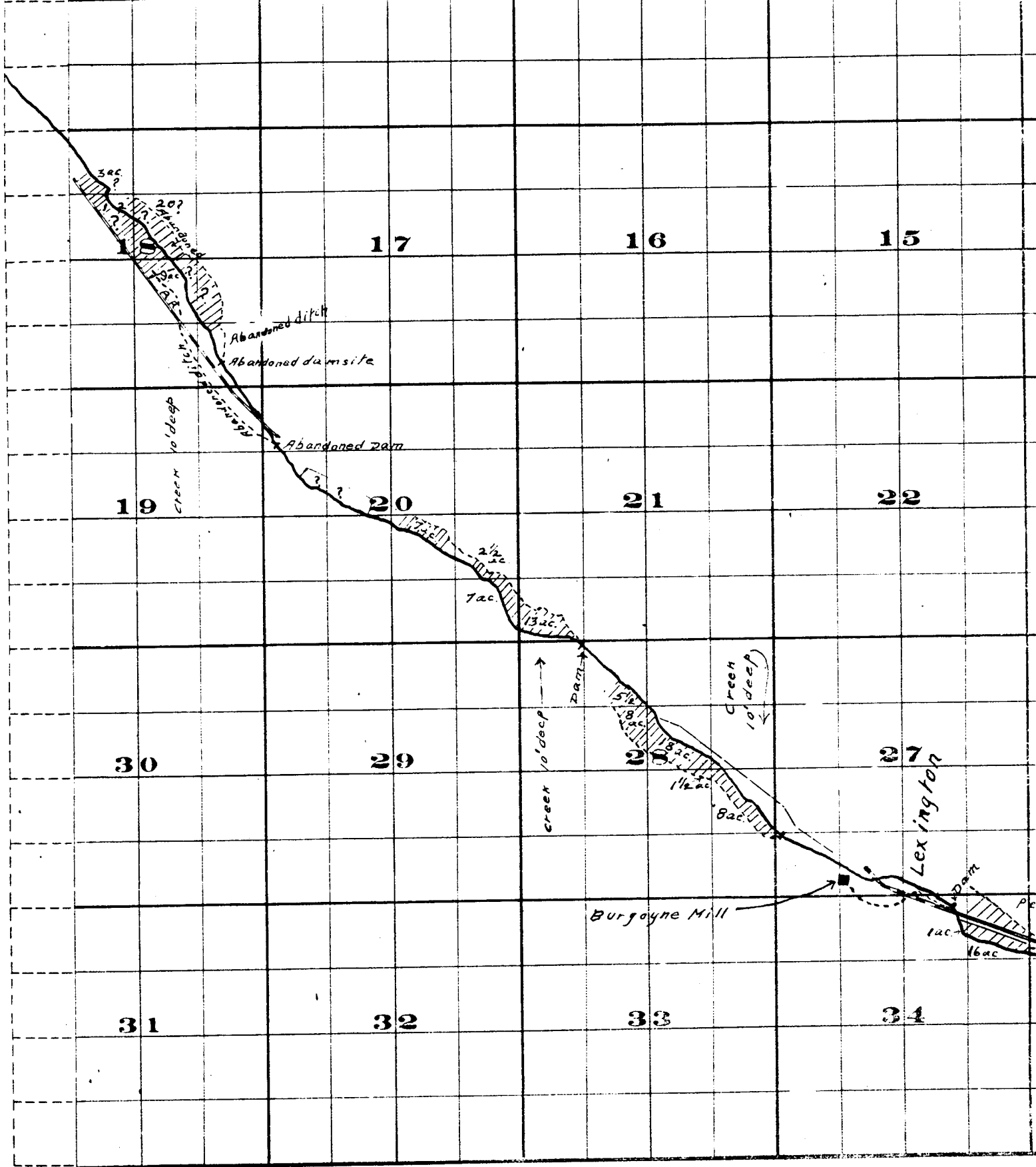
GON





FROM OFFICE OF THE STATE ENGINEER, SALEM, OREGON

Willow Creek Adjudication.



THE S. A. PRISTOL CO. PRINTERS & BOOKBINDERS, 107 N. 2ND ST., PHOENIX, ARIZ.

Surveyed by R. D. Gooper - July 1909
 John H. Lewis - State Engineer
 Examined July 14, 1909.

Township 1 S. , R.

