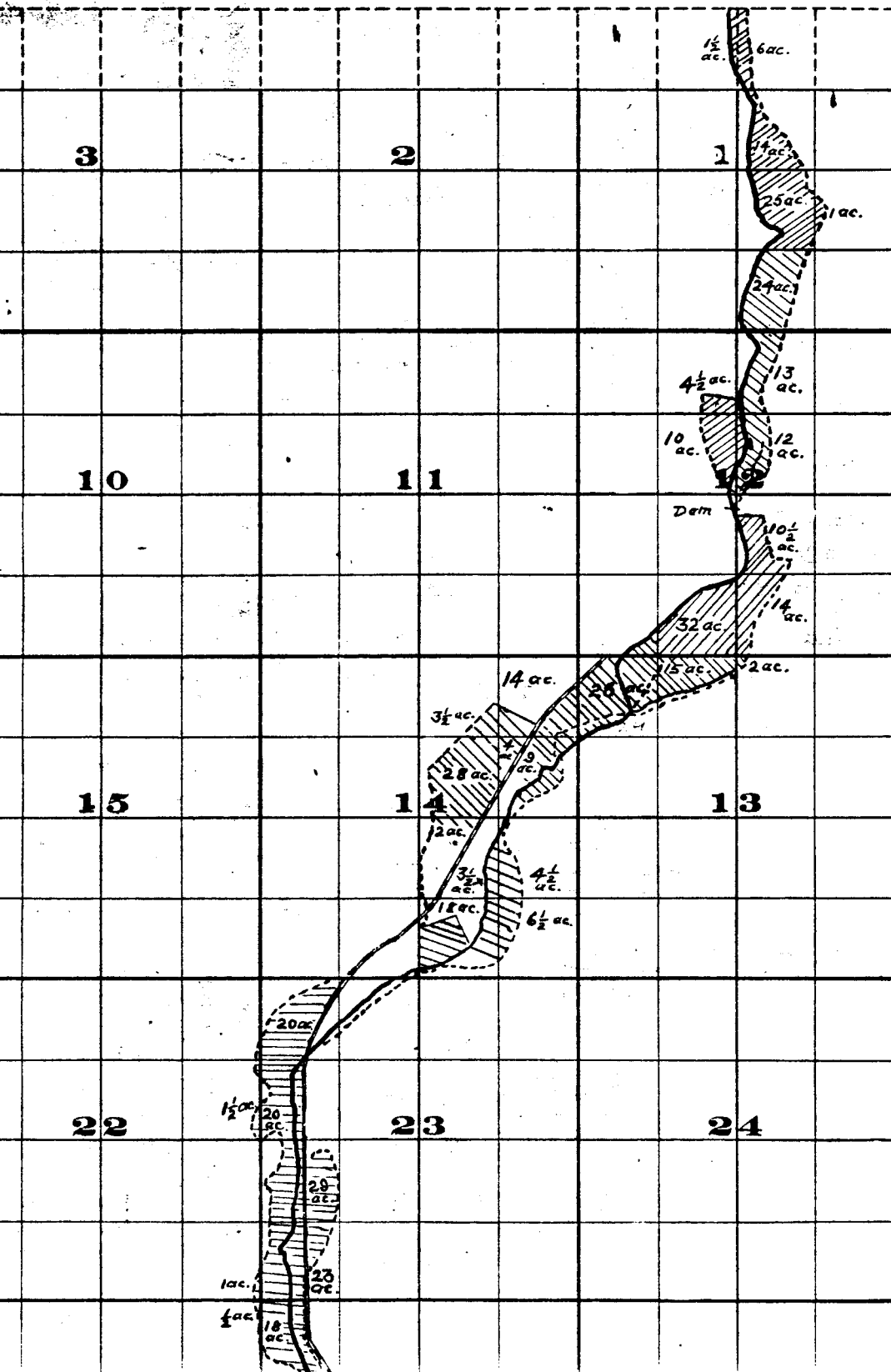


Range 22 E.W.M.

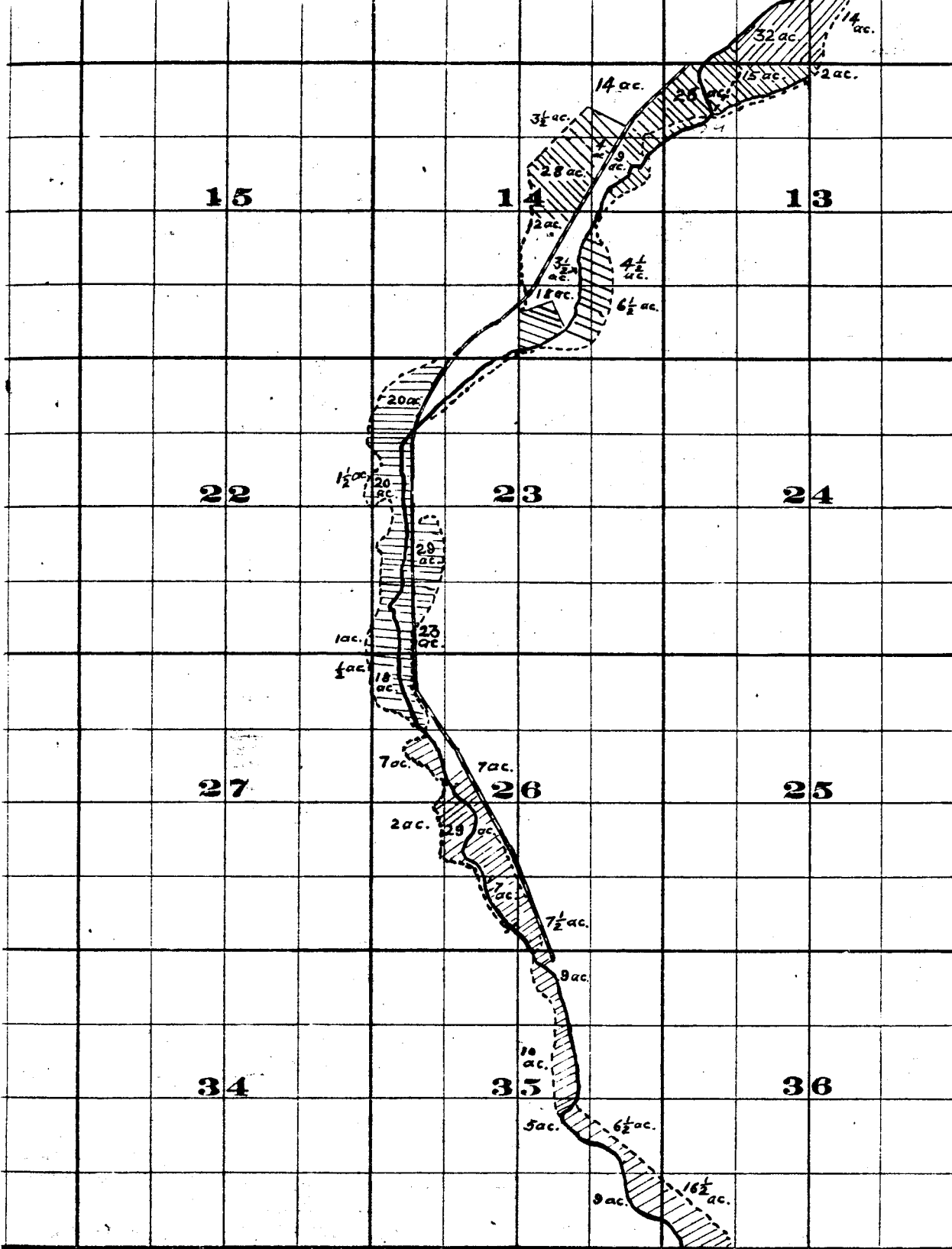


	18			17			16		15
	19			20			21		22
	30			29			28		27
	31			32			33		34

THE S. A. BRISTOL CO., PRINTERS & BOOKBINDERS, CHEYENNE, WYO.

Surveyed by H. H. Donnelly July 1909
John H. Lewis - State Engineer

Examined - July 14, 1909



FROM OFFICE OF THE STATE ENGINEER, SALEM, OREGON

Willow Creek Adjudication.

3 N. 2