

7	

8	

10	

9	

SW 1/4 of S.E. 1/4
Sec. 27 T1S. R. 25E.

ARCADE ST. DITCH

John McMillion	
John McMillion	
John McMillion	5
John McMillion	
John McMillion	

J.E. Gentry	A.M. Zink
J.E. Gentry	A.M. Zink
1	6
	F. Beymer
	W.F. Barnett
	W.F. Barnett

Peter McCabe	E.S. Duran
Peter McCabe	E.S. Duran
Peter McCabe	E.S. Duran
W.F. Barnett	E.S. Duran

1	8
Mrs. Beymer	
Mrs. Beymer	

	Frank Parker
W.B. McAllister	Roy McAllister
W.B. McAllister	Roy McAllister
Mrs. S.J. Boothby	E.W. Moyers
Mrs. S.J. Boothby	E.W. Moyers

PENLAND DITCH

10	1
9	2
8	3
7	4
6	5

All lots numbered the same

Scale 150 Ft. = 1 in

Lexington.

1S. 25 E.

mined July 14, 1909.

LEXINGTON

2	1

2	2

4	

3	

Sarah Booher
Sarah Booher
Sarah Booher
Sarah Booher
Sarah Booher
Sarah Booher

Sarah Booher
Sarah Booher
Sarah Booher
Sarah Booher
Sarah Booher
Sarah Booher

Ruth Barnett
Ruth Barnett

WE Pointer

JM White
JM White

Mrs Boothby
Mrs Boothby

Joe Eskelson
Joe Eskelson
Joe Eskelson
Joe Eskelson
Joe Eskelson
Joe Eskelson

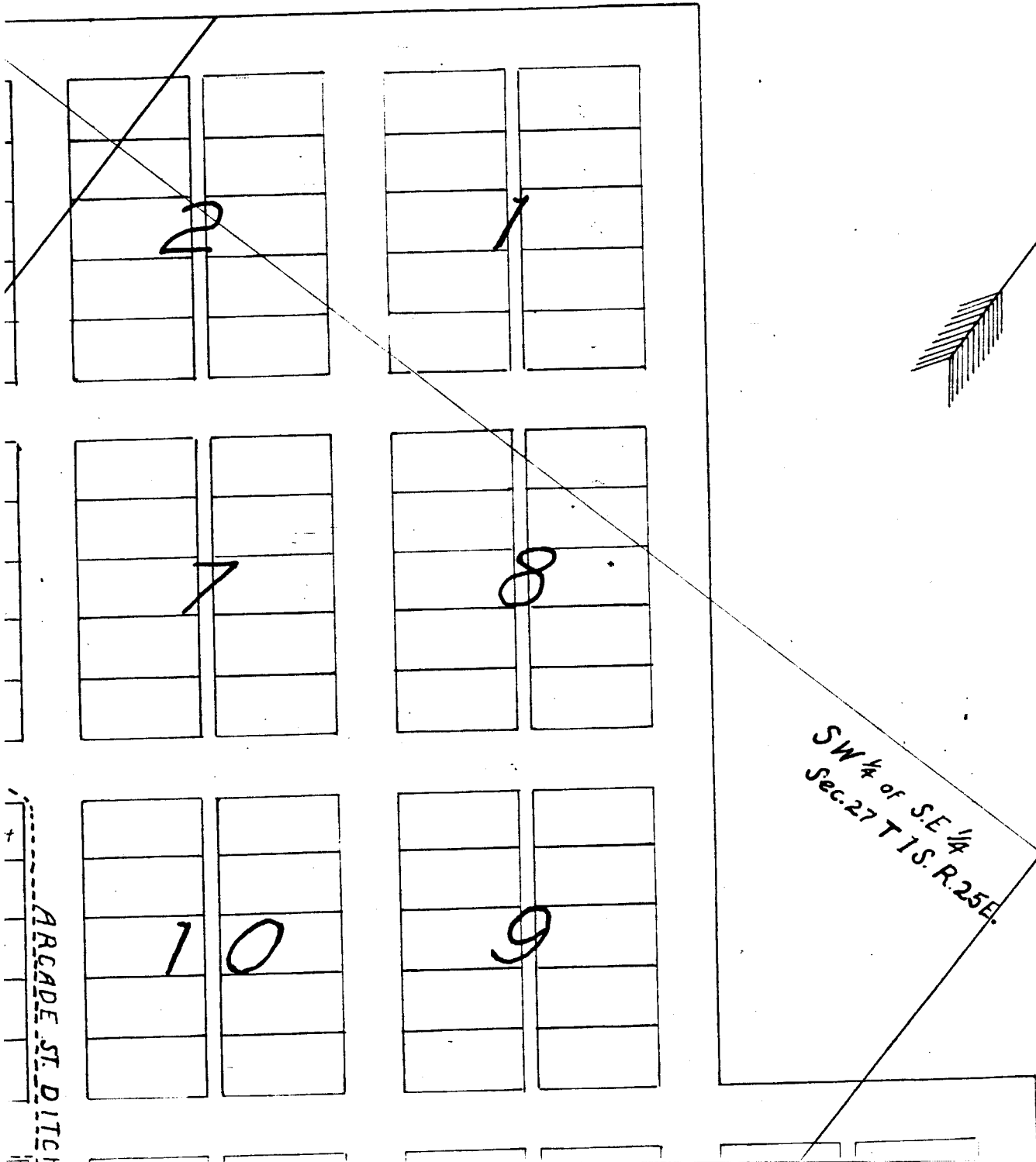
Mrs. C.A. Bengt
W.R. Monkers
W.R. Monkers
W.R. Monkers
W.R. Monkers
W.R. Monkers

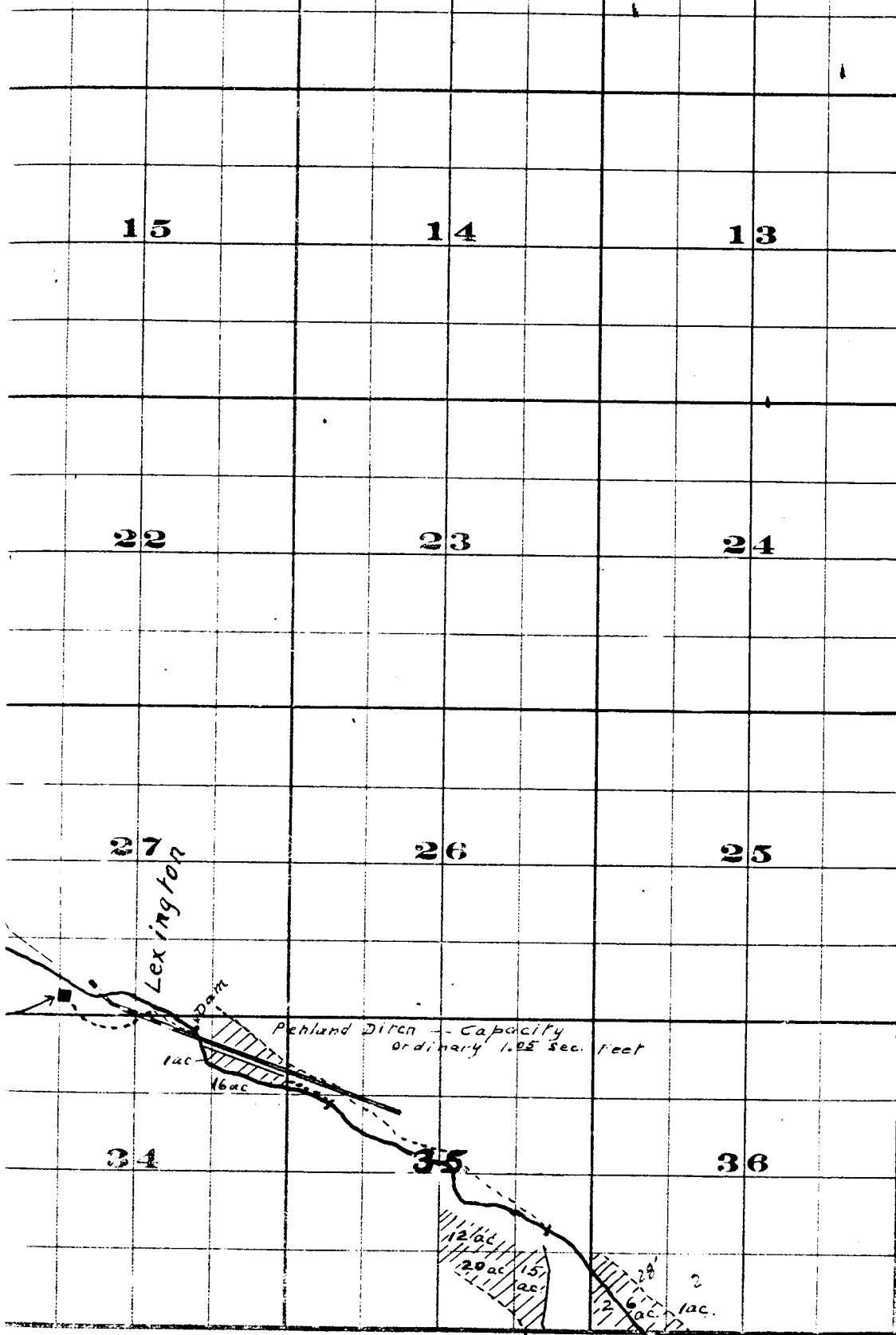
WE Leach
Breeding
E.A. Bolch Trustee for Congregational Church

WG Scott
WG Scott
WG Scott
Mrs. Beymer
Mrs. Beymer

Mill Race Ellis Arcade St. Ditch John John

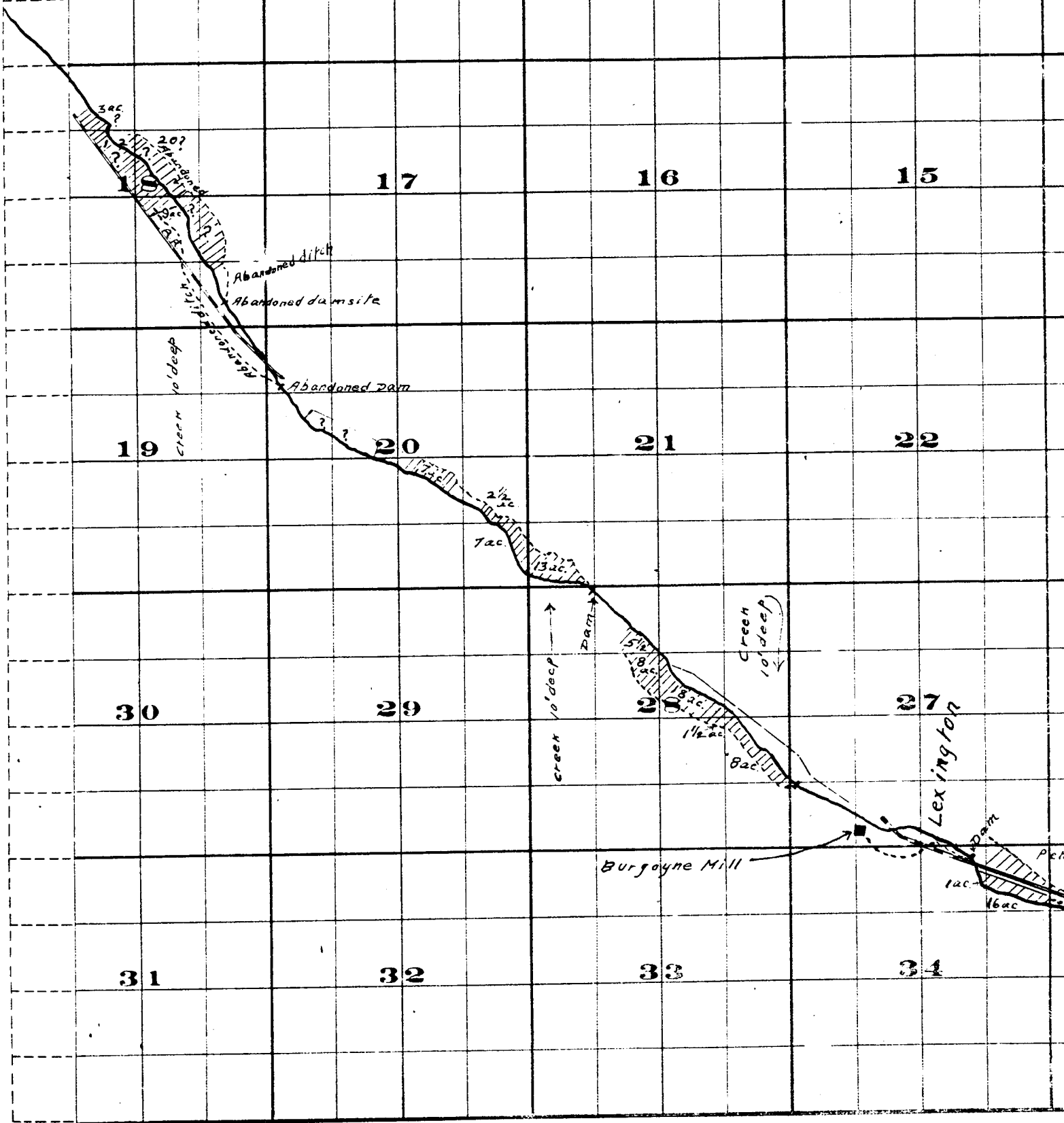
TOWN





FROM OFFICE OF THE STATE ENGINEER, SALEM, OREGON

Willow Creek Adjudication.



THE S. A. BRISTOL CO. PRINTERS & BOOKBINDERS, 111 N. 3rd ST. W.C.

Surveyed by R.D. Cooper - July 1909
 John H. Lewis - State Engineer
 Examined July 14, 1909.

Township 1 S. , R.

