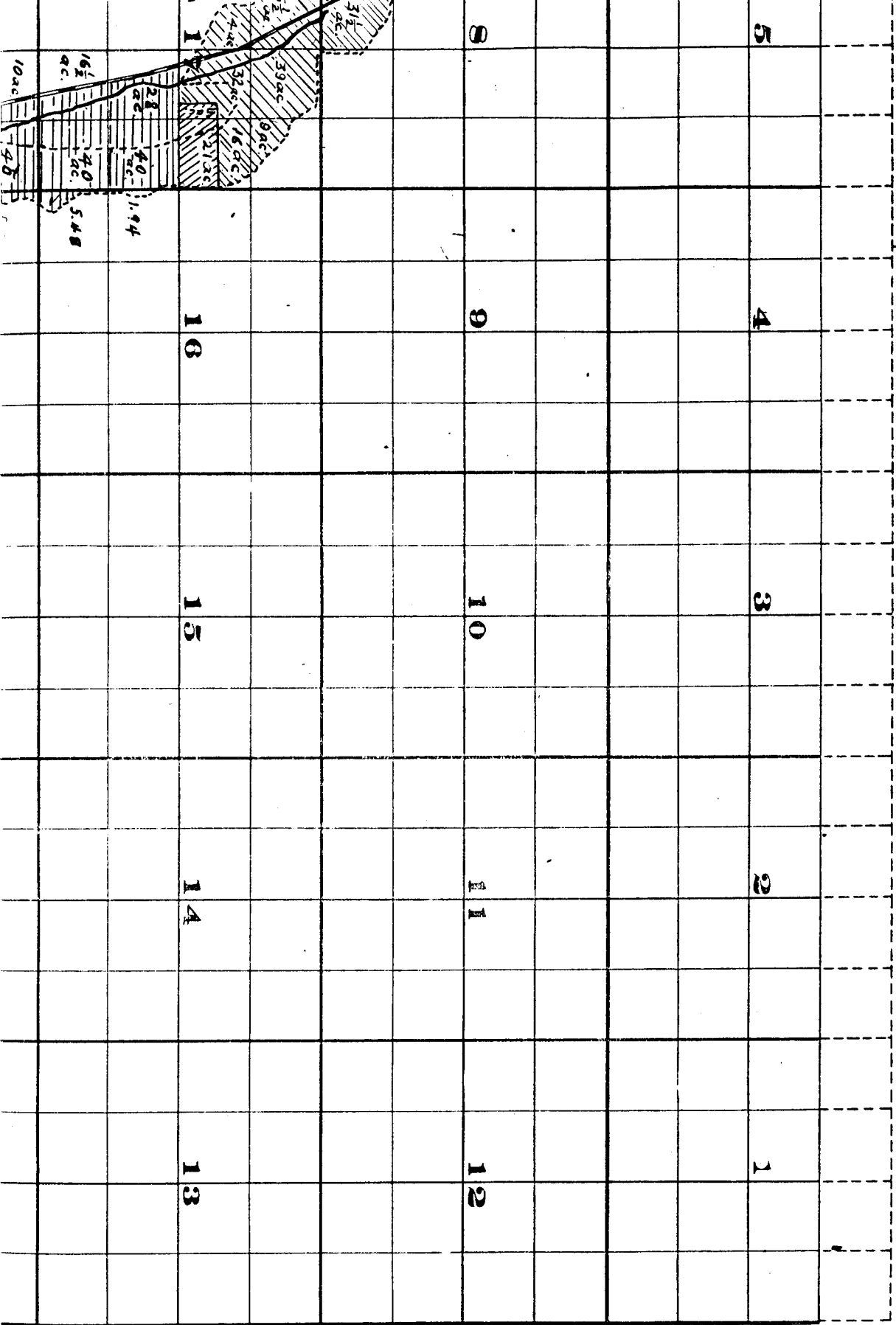
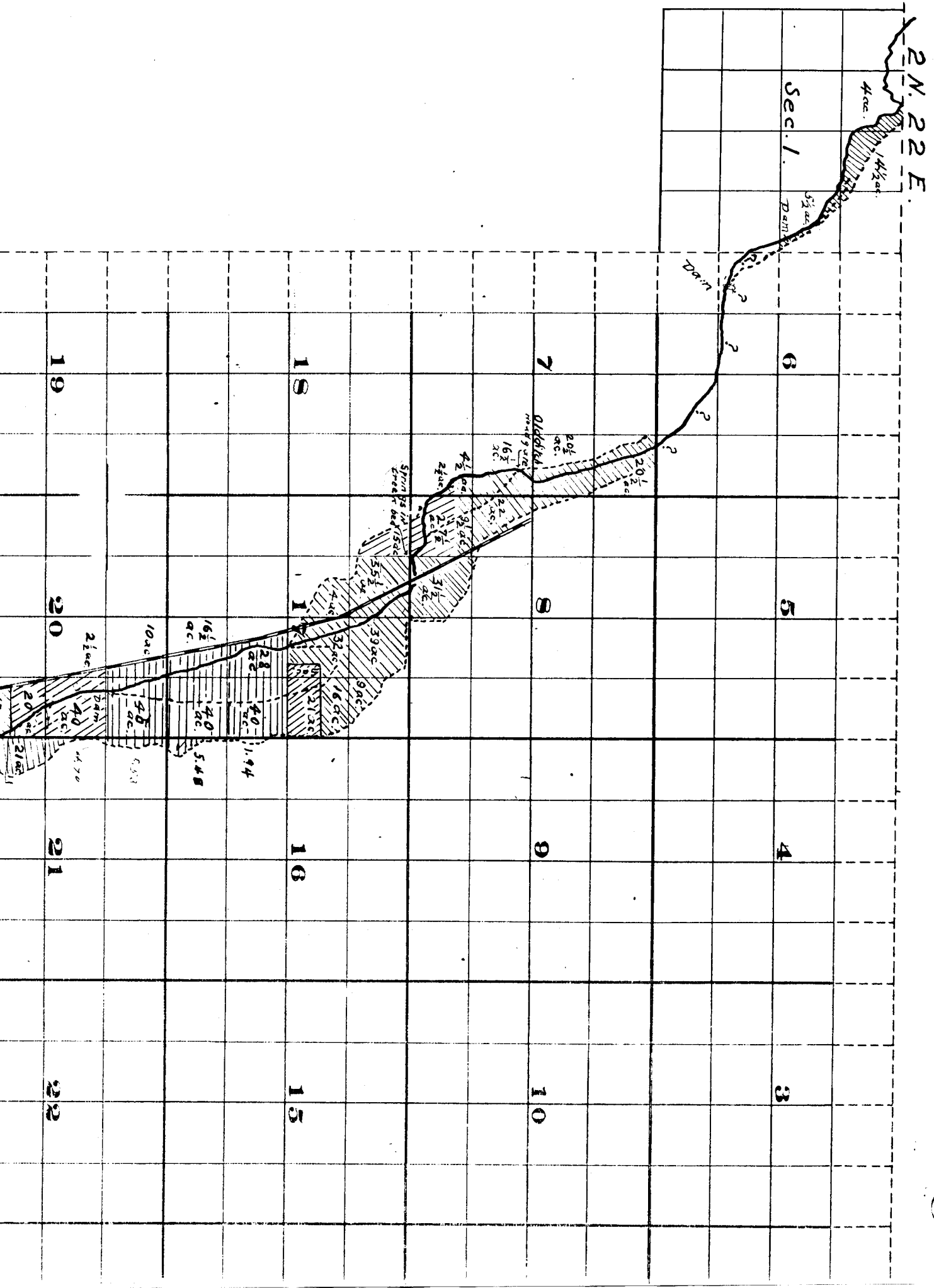
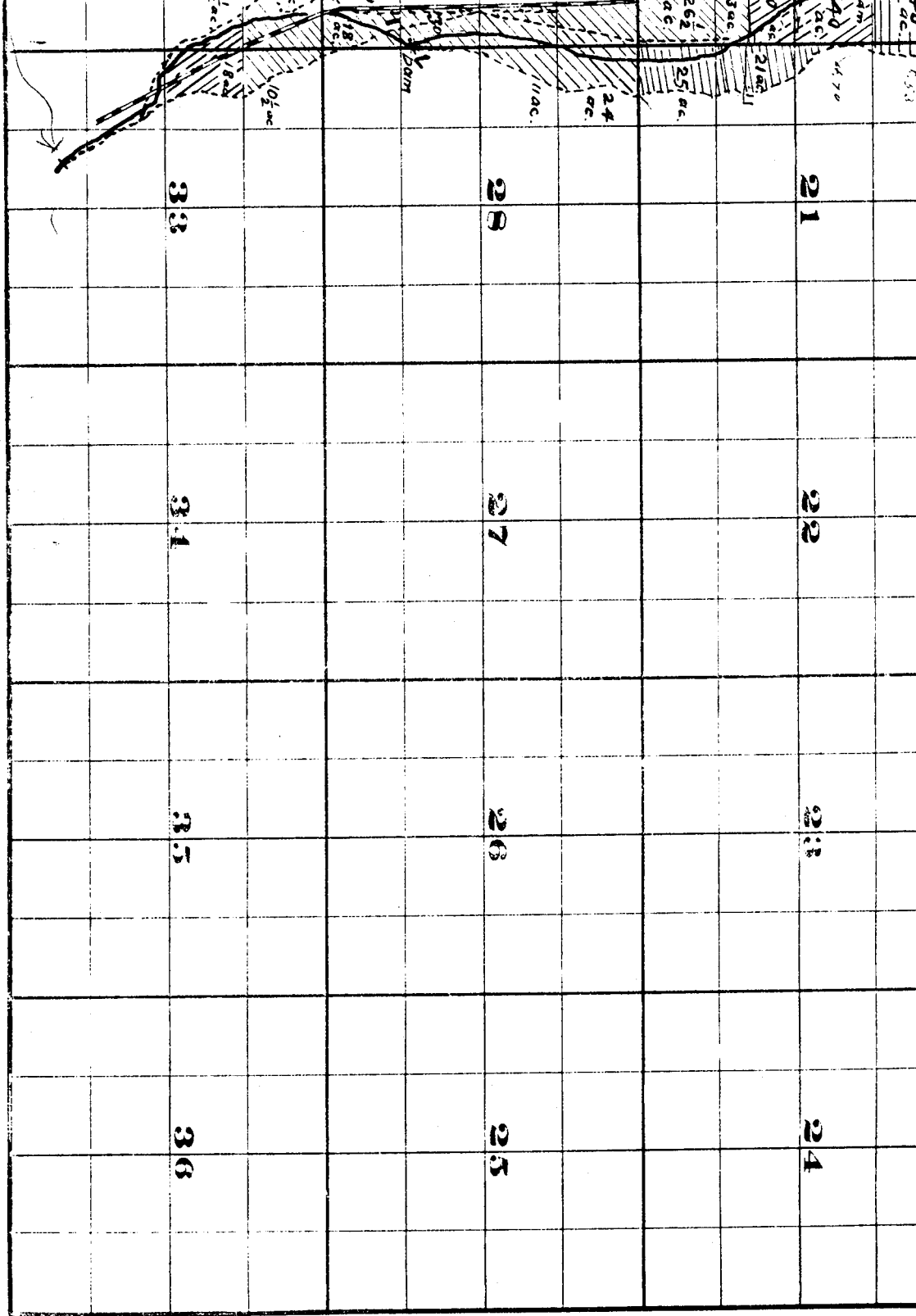


Ship 2 N. , Range 23 E.W.M.



# Township 2 N. , Range



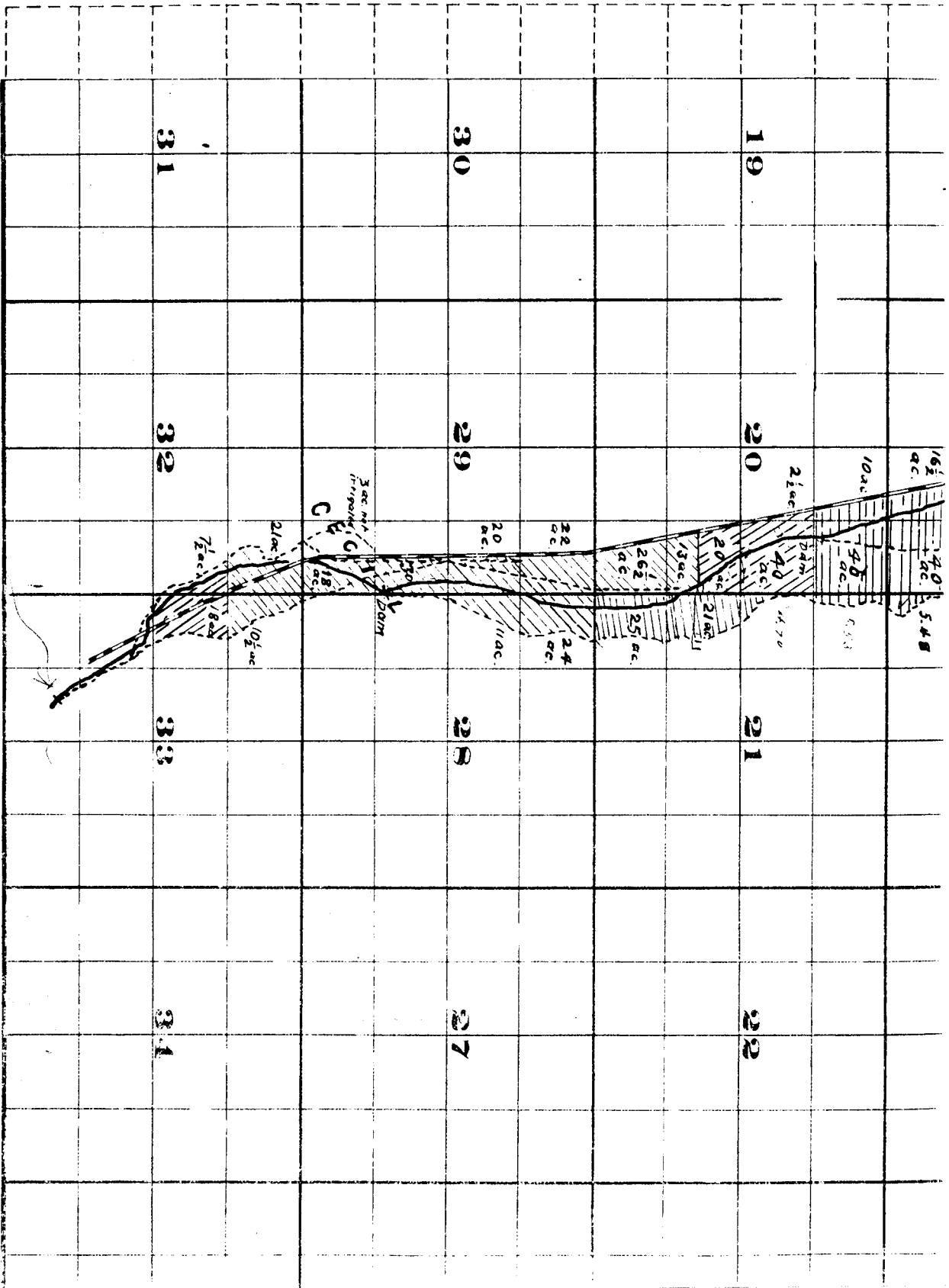


FROM OFFICE OF THE SENIOR ENGINEER, SEVEN, OREGON

*Willow Creek Adjudication.*

*July 1909.*  
*the Engineer.*  
*July 14, 1909.*

2 N. 22 E.  
 2 N. 23 E.



THIS MAP IS TO BE KEPT IN THE OFFICE OF THE STATE ENGINEER.

Surveyed by H.K. Donnelly July 1909.

John H. Lewis - State Engineer.

Examined July 14, 1909.

Will