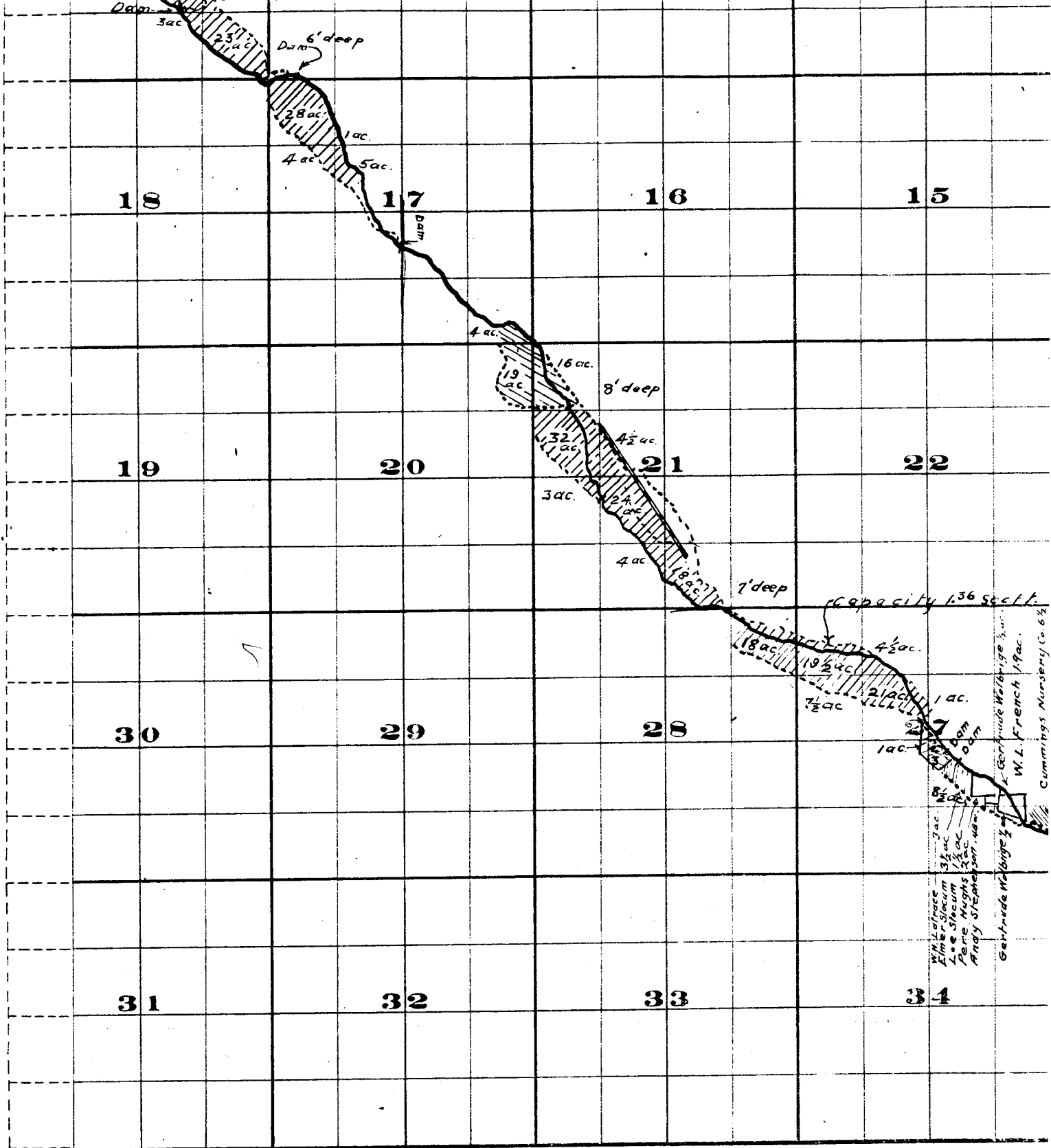


FROM OFFICE OF THE STATE ENGINEER

*Willow Creek Adjudication*

Part 35.26  
25.26

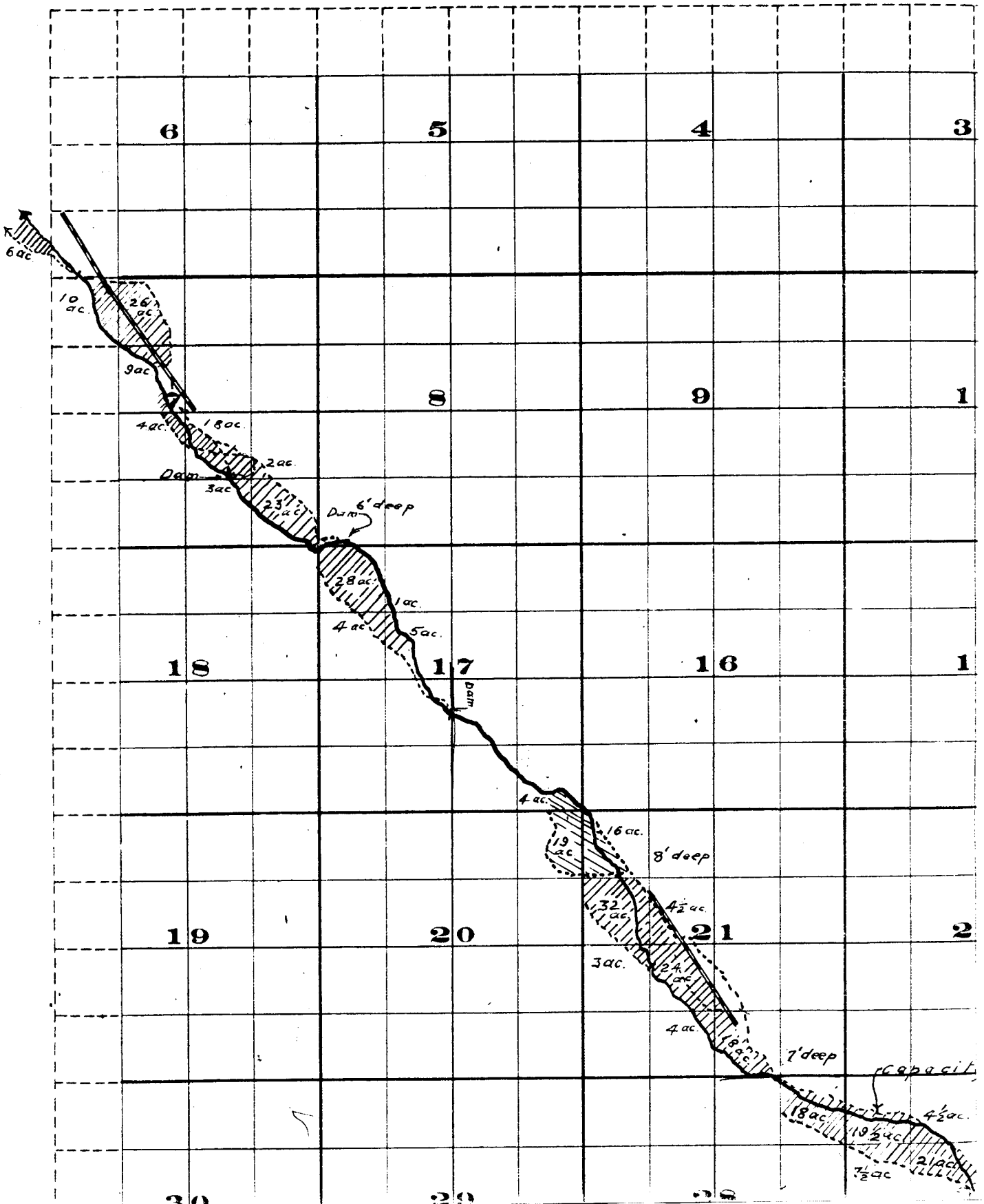


THE S & B RISTOL CO., PRINTERS & BOUNDERS, CHRISTIANITY BLDG.

Surveyed by R.D. Cooper July 1909  
 John H. Lewis - State Engineer.  
 Examined July 14, 1909.



# Township 2 S.



Range 26 E. W. M.

