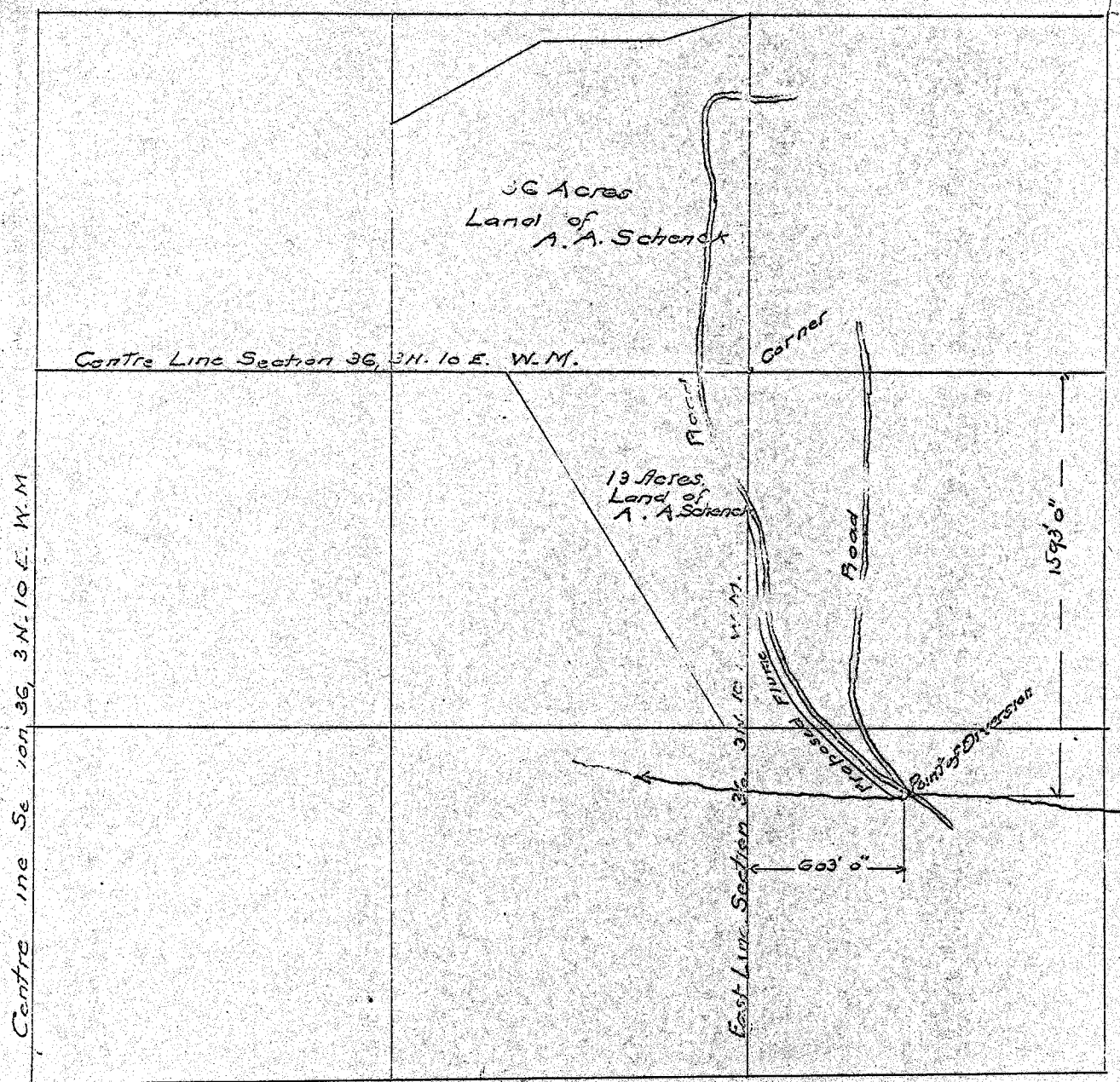


MAP  
 ILLUSTRATING APPLICATION  
 FOR  
 WATER APPROPRIATION  
 BY  
 A. A. SCHENCK  
 Hood River, Oregon  
 Sept. 5, 1916 Scale 600' = 1 inch



OFFICE OF CIVIL ENGINEERING  
 DEPARTMENT OF AGRICULTURE  
 WASHINGTON, D. C.

5145  
 3100