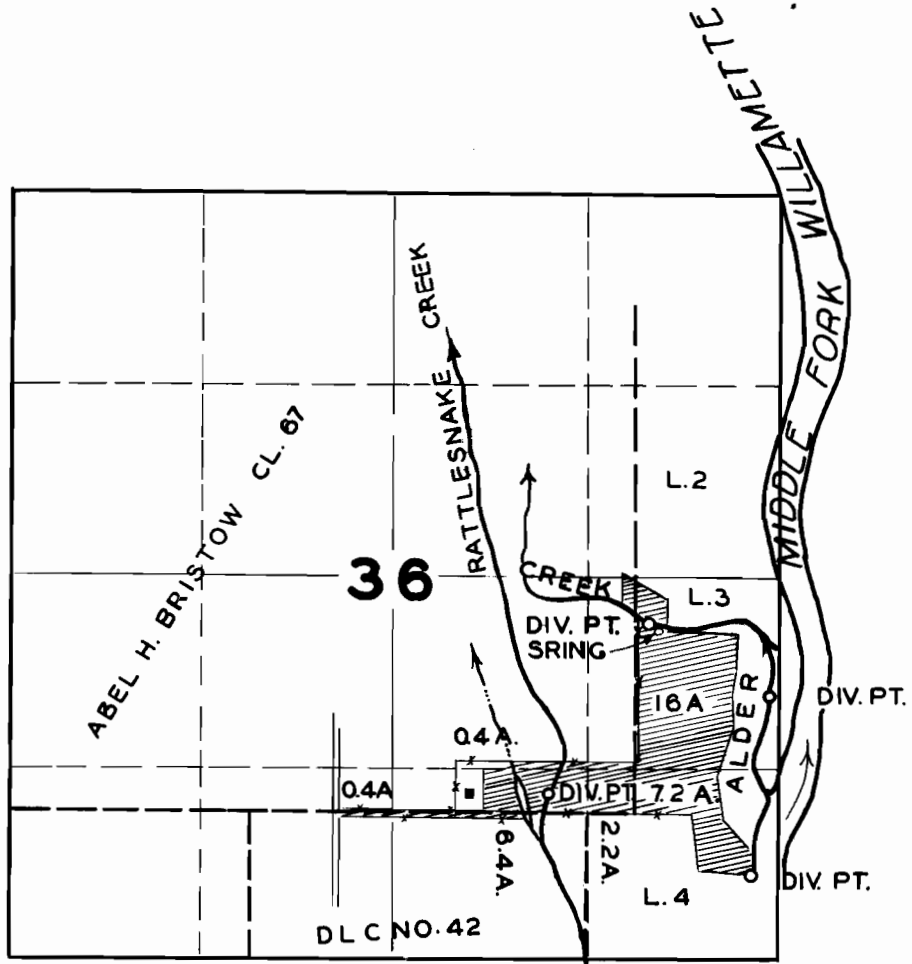


T. 18 S. R. 2 W. W.M.



**FINAL PROOF SURVEY**

UNDER

Application No. **21336** Permit No. **16729**

IN NAME OF

..... **PAUL D. GREEN** .....

Surveyed **JUNE 8, 1949**, by **H.L. COFFMAN**.

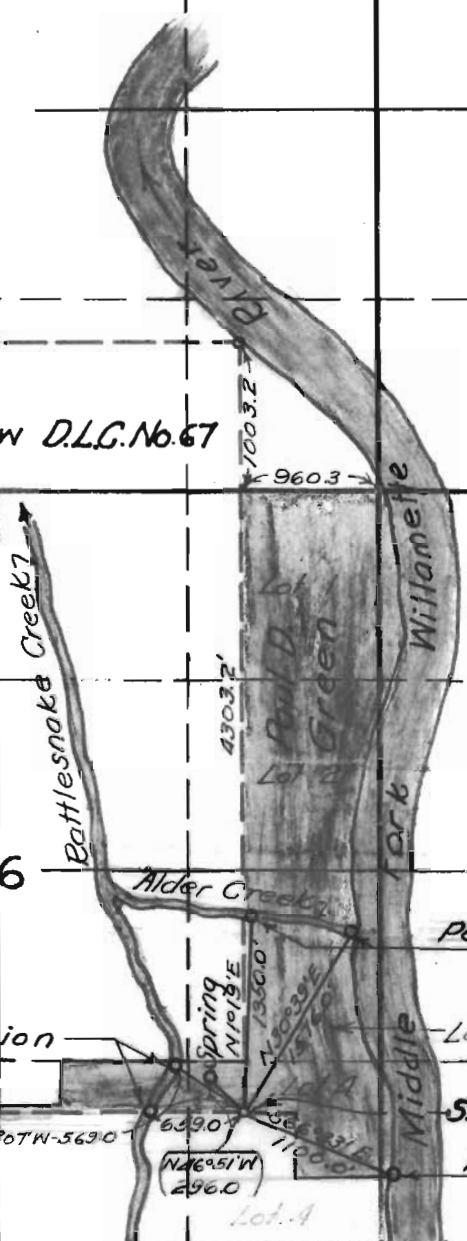
36

TOWNSHIP 18 S, RANGE 2 W., W. M.

North



Abel K. Bristow D.L.C. No. 67



36

Points of Diversion

Points of Diversion

West

N 58° 07' W - 5630.0

6390.0

N 46° 51' W 296.0

296.0

1100.0

1100.0

1100.0

1100.0

1100.0

1100.0

1100.0

1100.0

1100.0

1100.0

1100.0

1100.0

1100.0

1100.0

1100.0

1100.0

1100.0

South

21336 • 2-81-84 A

RECEIVED  
DEC 24 1945  
STATE ENGINEER  
SALEM, OREGON

APPLICATION No. 21336  
PERMIT No. 16729