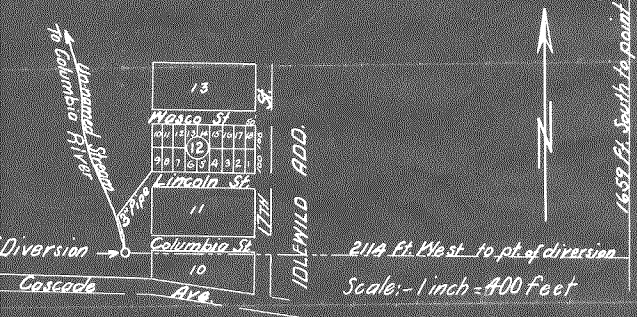


E 1/4 Cor. Sec. 26
T. 31N., R. 10E. W. 1M.

APPLICATION of Charles R. Hainey



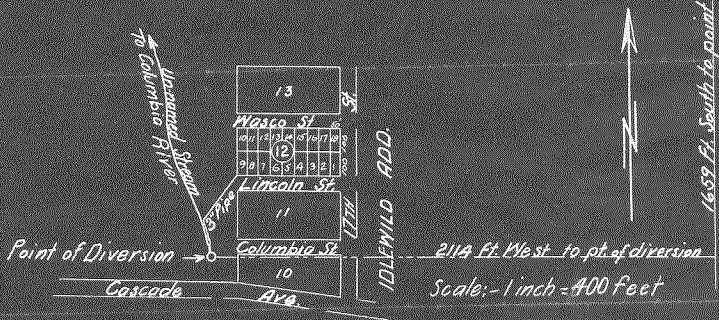
PLAT Accompanying Application
To Appropriate Public Waters

is to certify that this plat was made from notes taken in a
made by me on the 8th day of February, 1947, and that it
represents the point of diversion, the land to be irrigated,
general course of the un-named stream, and the course of the
pipe line. Lots 6, 7, 8, 9, 10, 11, 12 & 13 of Block 12 of Idlewild to be irrigated
Edward Hobson, Civil Engineer.

22264

E. 1/4 Cor. Sec. 26
T. 31N., R. 10E. W.M.

APPLICATION of Charles R. Hainey



PLAT Accompanying Application
To appropriate Public Waters

This is to certify that this plat was made from notes taken in a survey made by me on the 8th day of February, 1947, and that correctly represents the point of diversion, the land to be irrigated, the general course of the un-named stream, and the course of a 3 inch pipe line. Lots 6, 7, 8, 9, 10, 11, 12 & 13 of Block 12 of Idlewild to be irrigated.

Edward Hobson, Civil Eng

22264