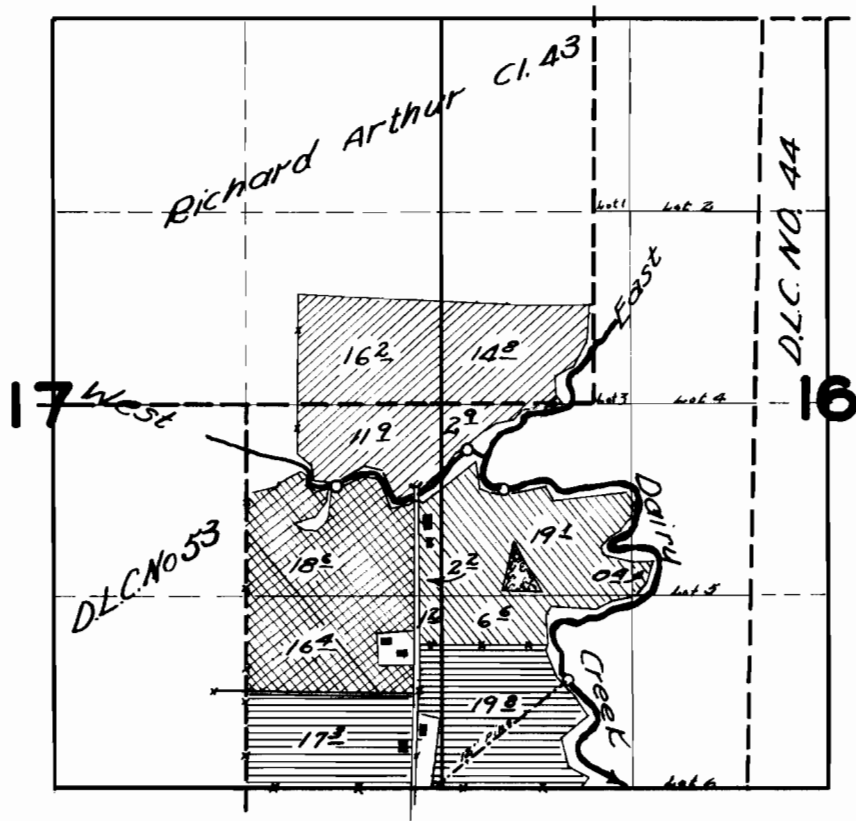

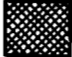





T. 1 N. R. 3 W. W. M.



FINAL PROOF SURVEY UNDER:

- | | | | |
|-----------------------|------------|------------|---|
| B. J. VAN GRUNSVEN | APP. 20141 | PER. 15700 |  |
| H. VAN GRUNSVEN | APP. 21502 | PER. 16864 |  |
| CHAS. VAN DEHEY | APP. 20131 | PER. 15694 |  |
| BERNARD KEMPER | APP. 23083 | PER. 18210 |  |
| DIVERSION POINT | | |  |
| SURVEYED AUG. 7 1951 | | | BY H. L. COFFMAN |