

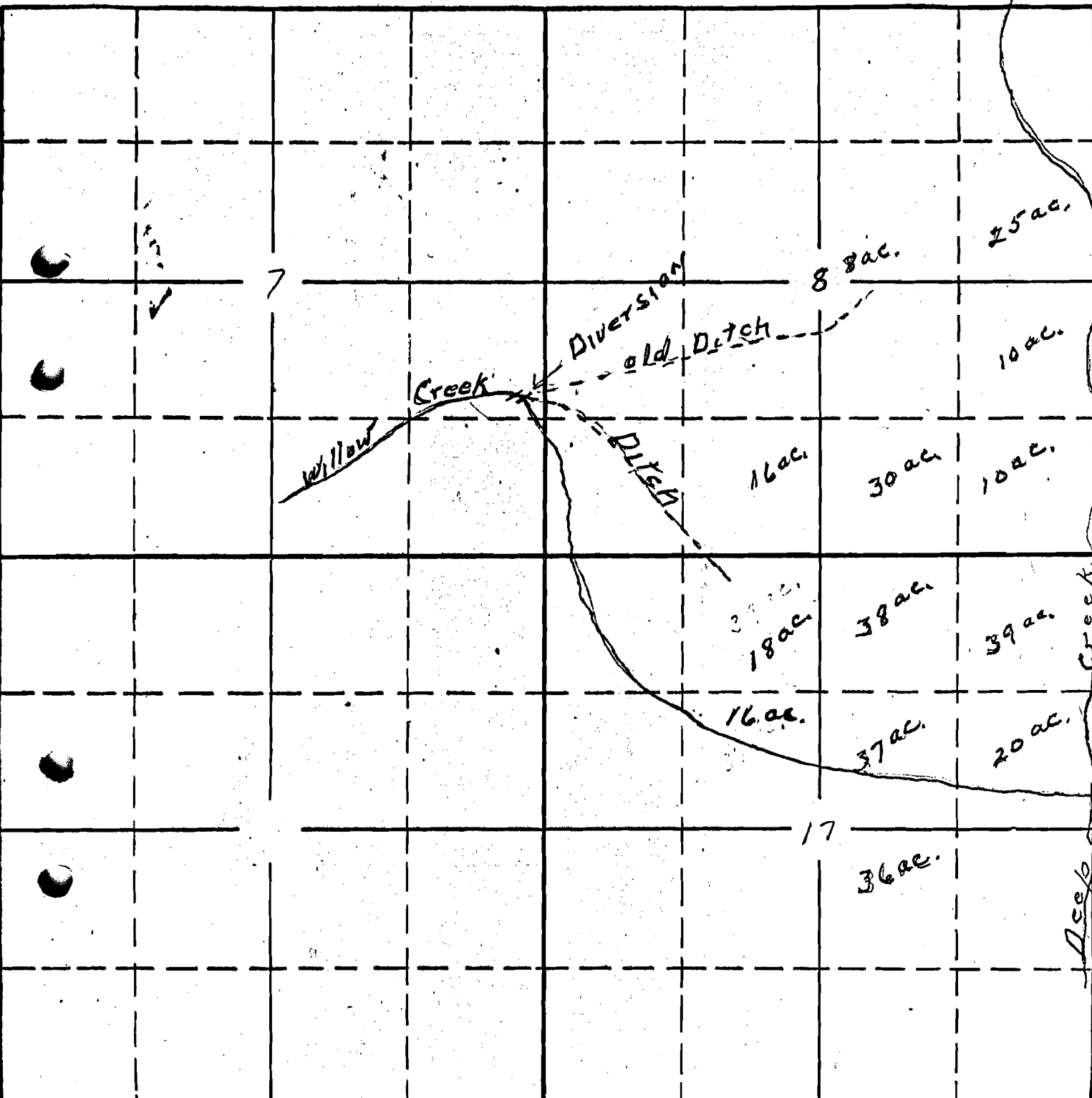
SECTION

8  
17

14663  
19915

TOWNSHIP 40S, RANGE 22E, W. M.

North



South

RECEIVED  
OCT 28 1940  
STATE ENGINEER  
SALEM, OREGON

19067 ORC  
13-43  
APPLICATION No. 19067  
PERMIT No. 14663

40-22 ✓