

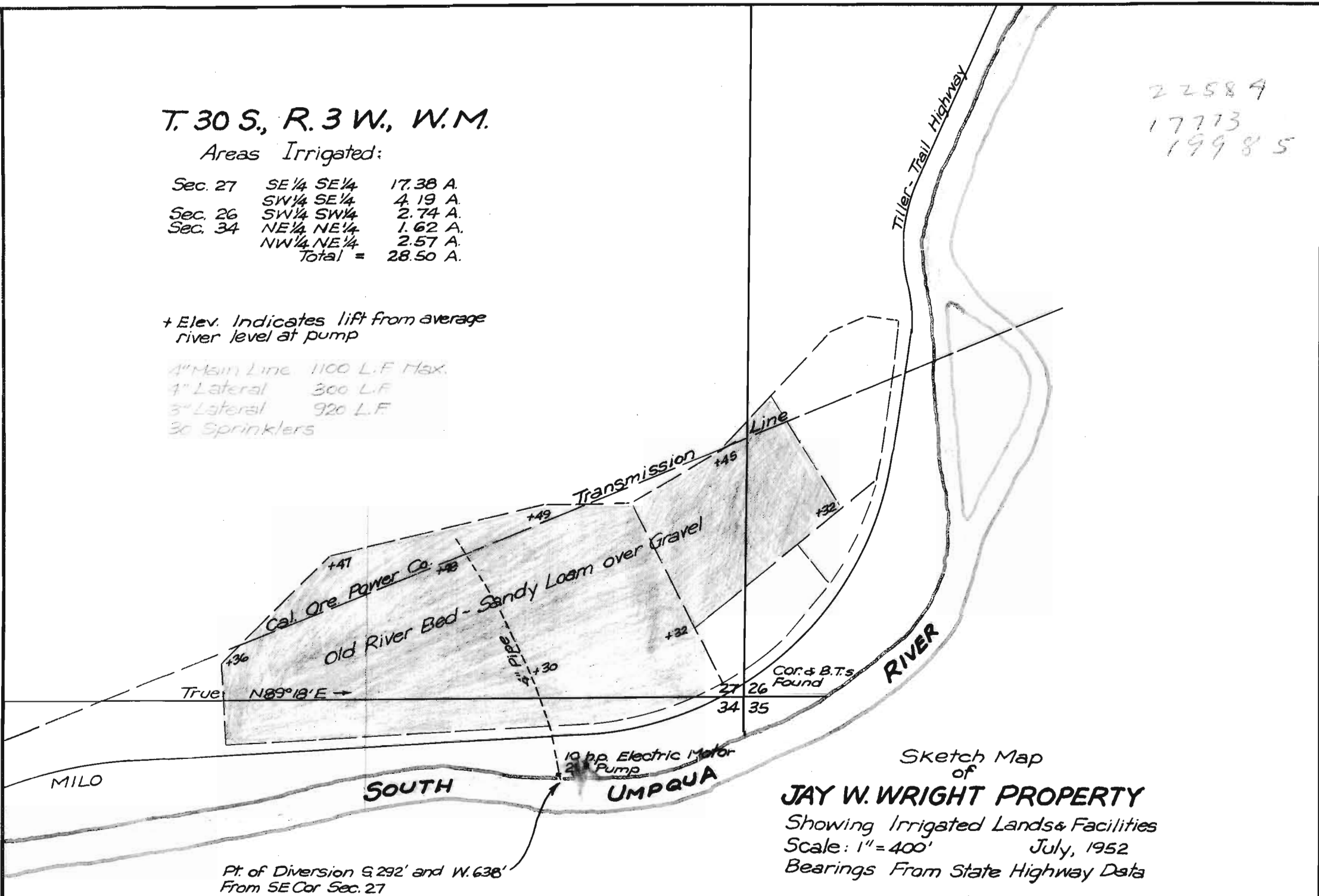
T. 30 S., R. 3 W., W.M.

Areas Irrigated:

Sec. 27	SE 1/4 SE 1/4	17.38 A.
	SW 1/4 SE 1/4	4.19 A.
Sec. 26	SW 1/4 SW 1/4	2.74 A.
Sec. 34	NE 1/4 NE 1/4	1.62 A.
	NW 1/4 NE 1/4	2.57 A.
Total =		28.50 A.

+ Elev. Indicates lift from average river level at pump

4" Main Line 1100 L.F. Max.
 4" Lateral 300 L.F.
 3" Lateral 920 L.F.
 30 Sprinklers



22589
 17713
 19985

Sketch Map
 of
JAY W. WRIGHT PROPERTY
 Showing Irrigated Lands & Facilities
 Scale: 1" = 400'
 July, 1952
 Bearings From State Highway Data

Certified as True and Correct:



Walter T. Wright