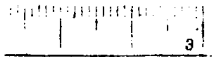


6		15		14			13		
1		22		23			24		
8		27		26			25		
3		34		35			36		

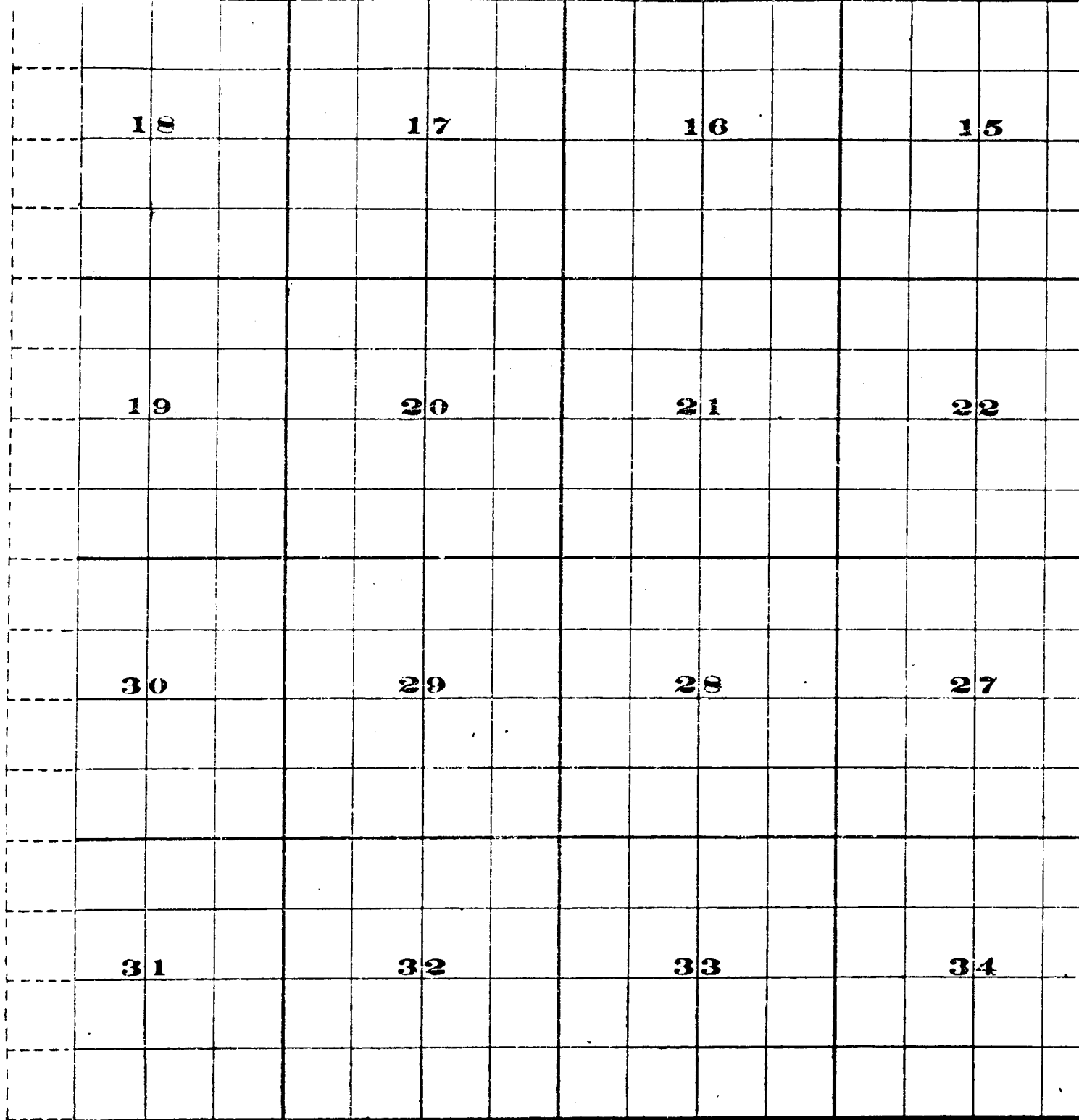
FROM OFFICE OF THE STATE ENGINEER, SALEM, OREGON



Willow Creek Adjudication.

29

2.



Scale of Feet.

Surveyed by R.D.Cooper: July 1909

John H. Lewis - State Engineer.

Examined July 14, 1909.

Range 25 E. W.M.

