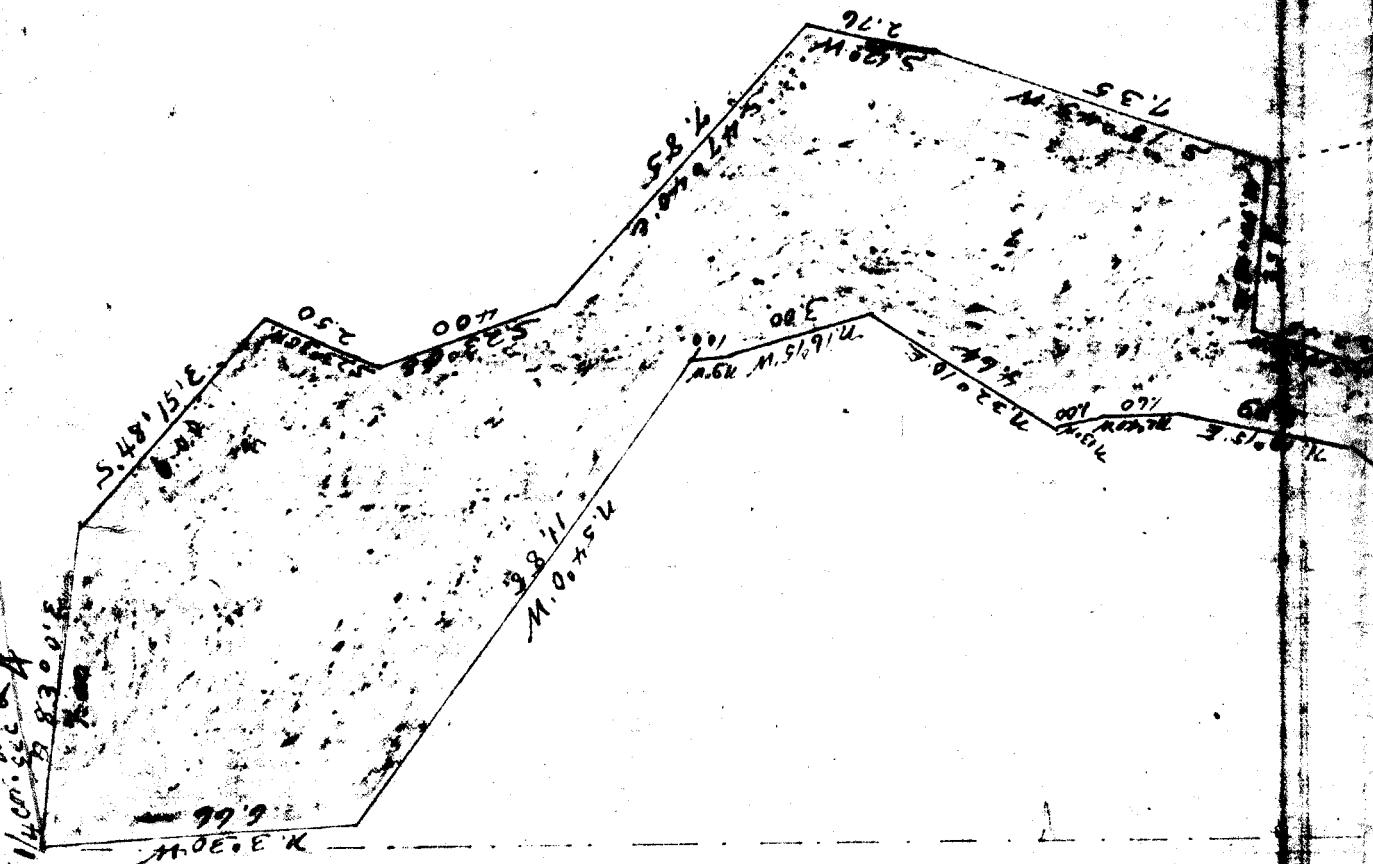


2952

2952

2952



2952

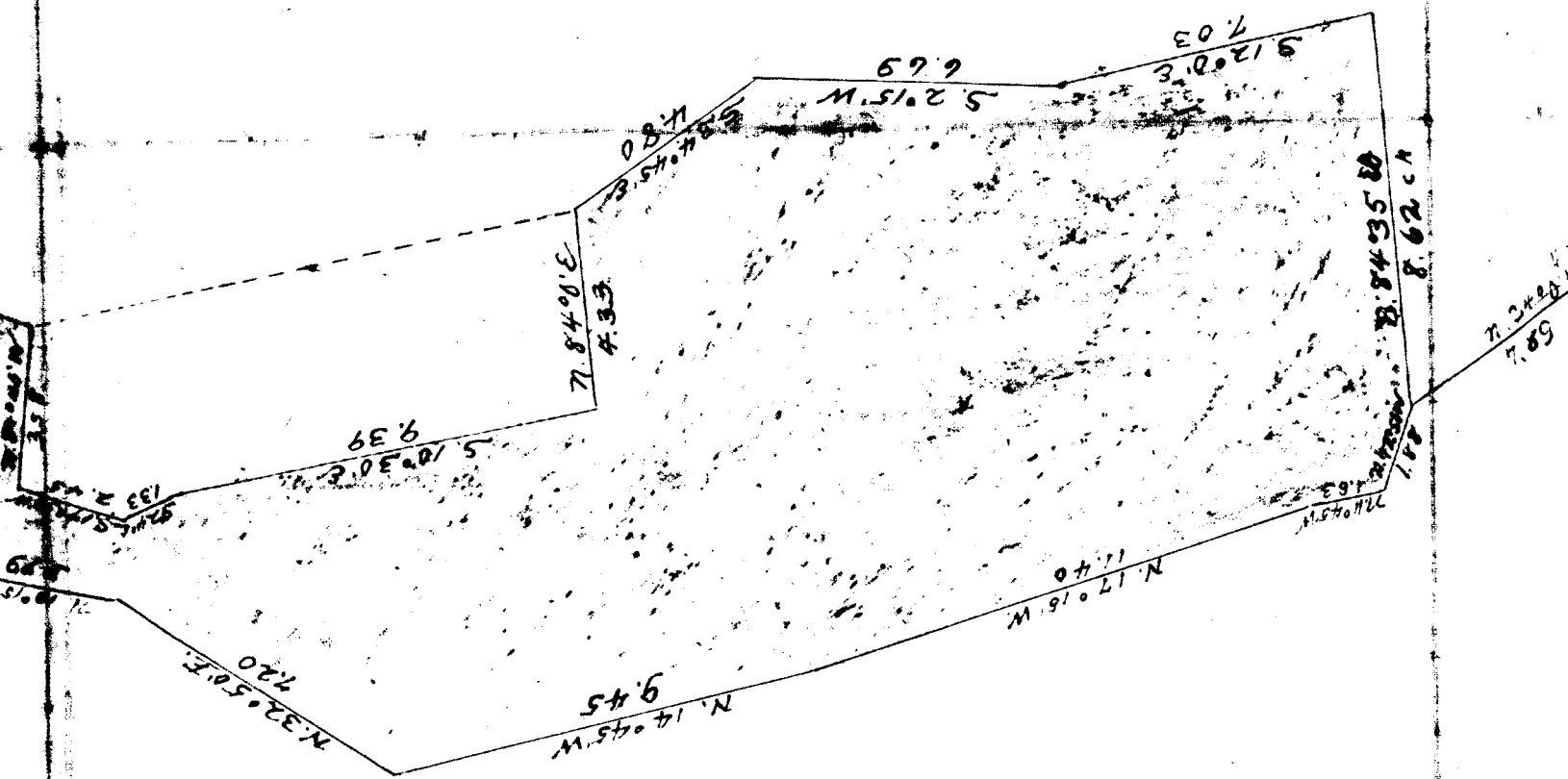
dp 88

Unusable Land
in
NW 1/4 of NW 1/4 Sec 9
and
W 1/2 of SW 1/4 Sec 8
T 25, R 22 E. 20th.
48.05 Acres
Owned by
Clyde Clegg

Survey of APT 21722.13.
J. W. Nirschner

PLAT NO. 113
NEW YORK
SAUL H. GREENBERG

3296



dp 88

