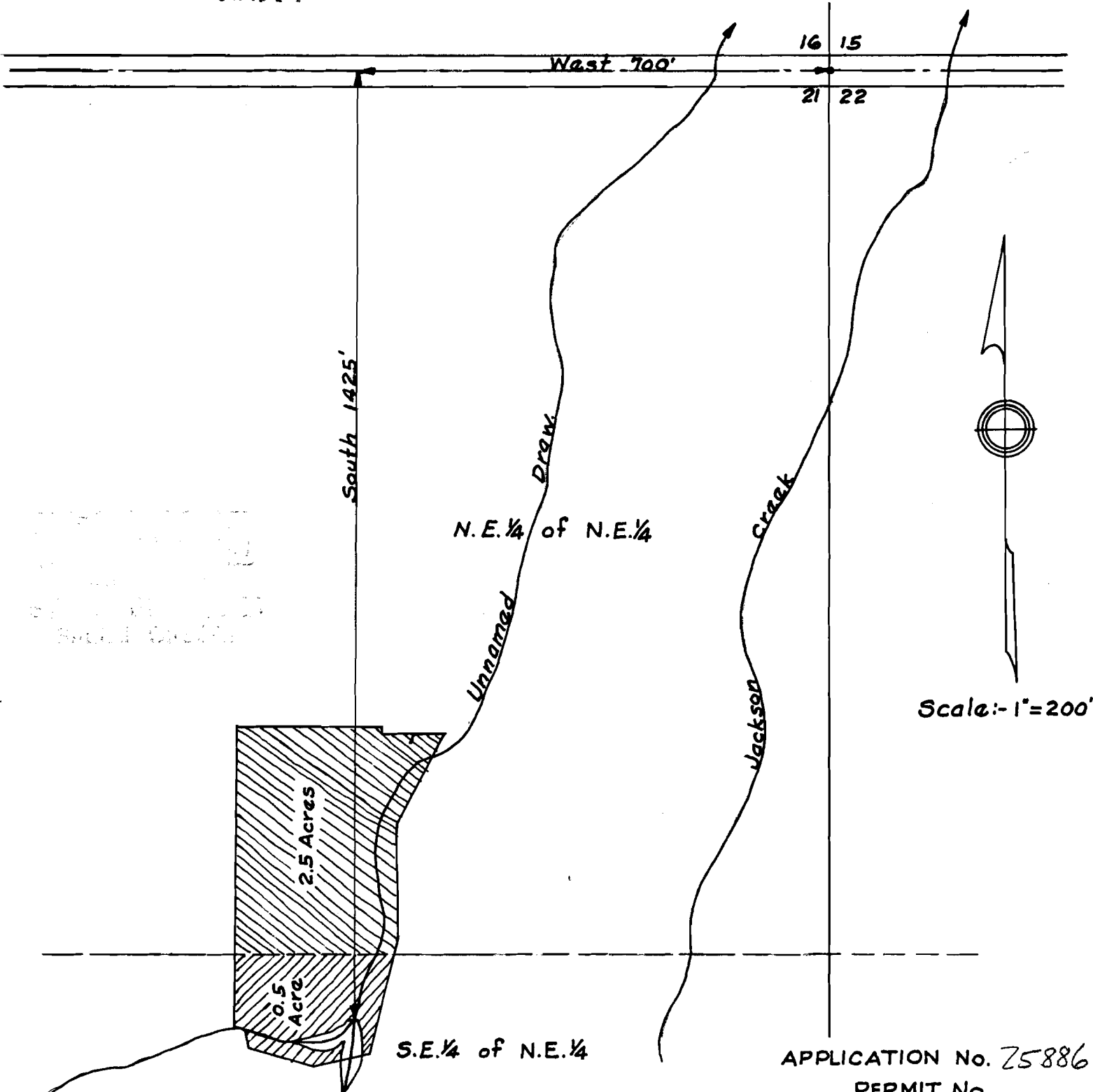


TOWNSHIP 37 S, RANGE 2 W, W.M.

Application No. R-25886
25887
Permit No. R-1166
20317



N.E. 1/4 of N.E. 1/4

S.E. 1/4 of N.E. 1/4

Scale: - 1" = 200'

APPLICATION No. 25886
PERMIT No.

Map to accompany applica-
tion of Kathryn Hanley
Heffernan for use of water
from storage and unnamed
draw for irrigation.