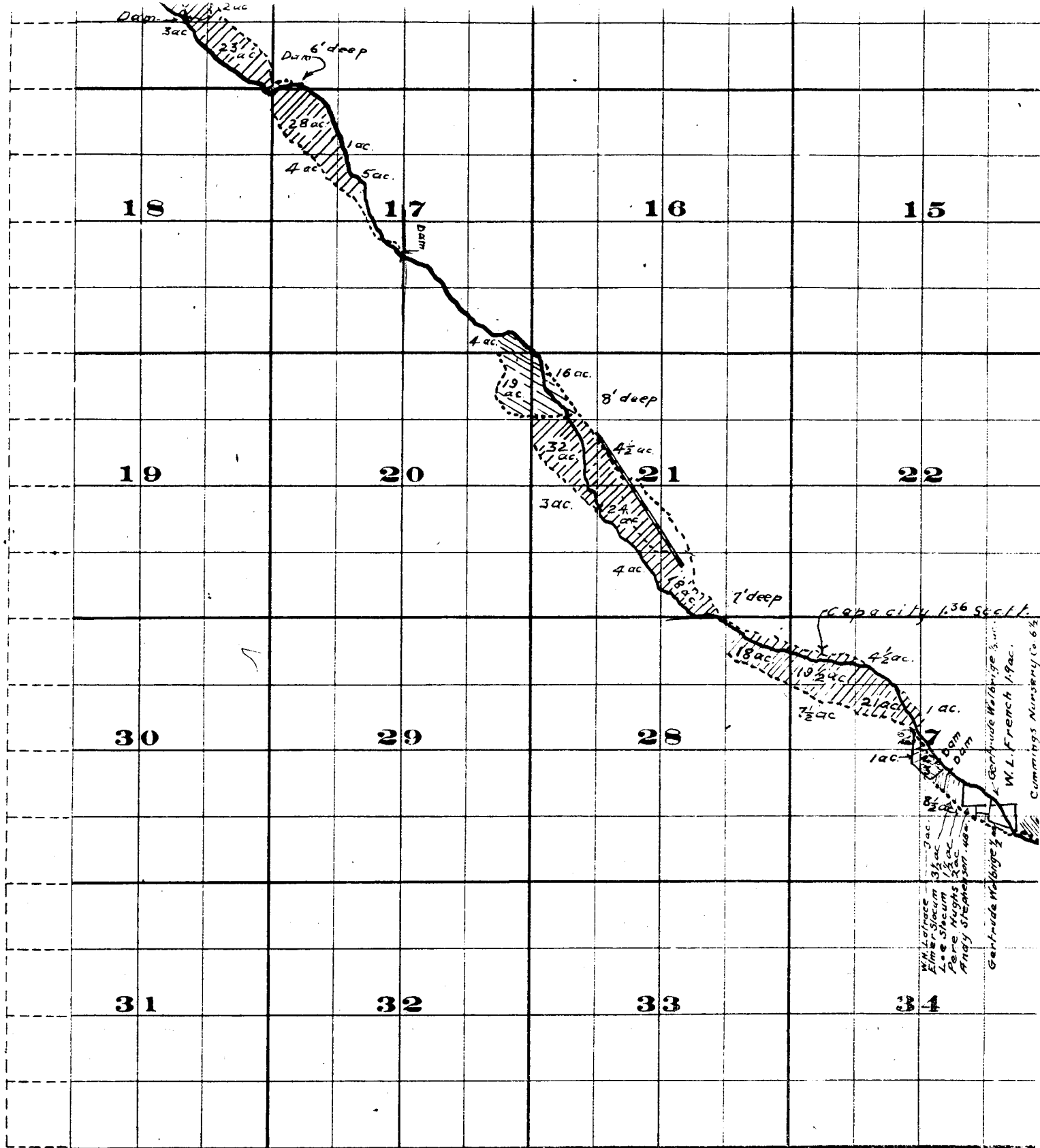


Willow Creek Adjudication

*Part 3 S. 26
2 S. 26*

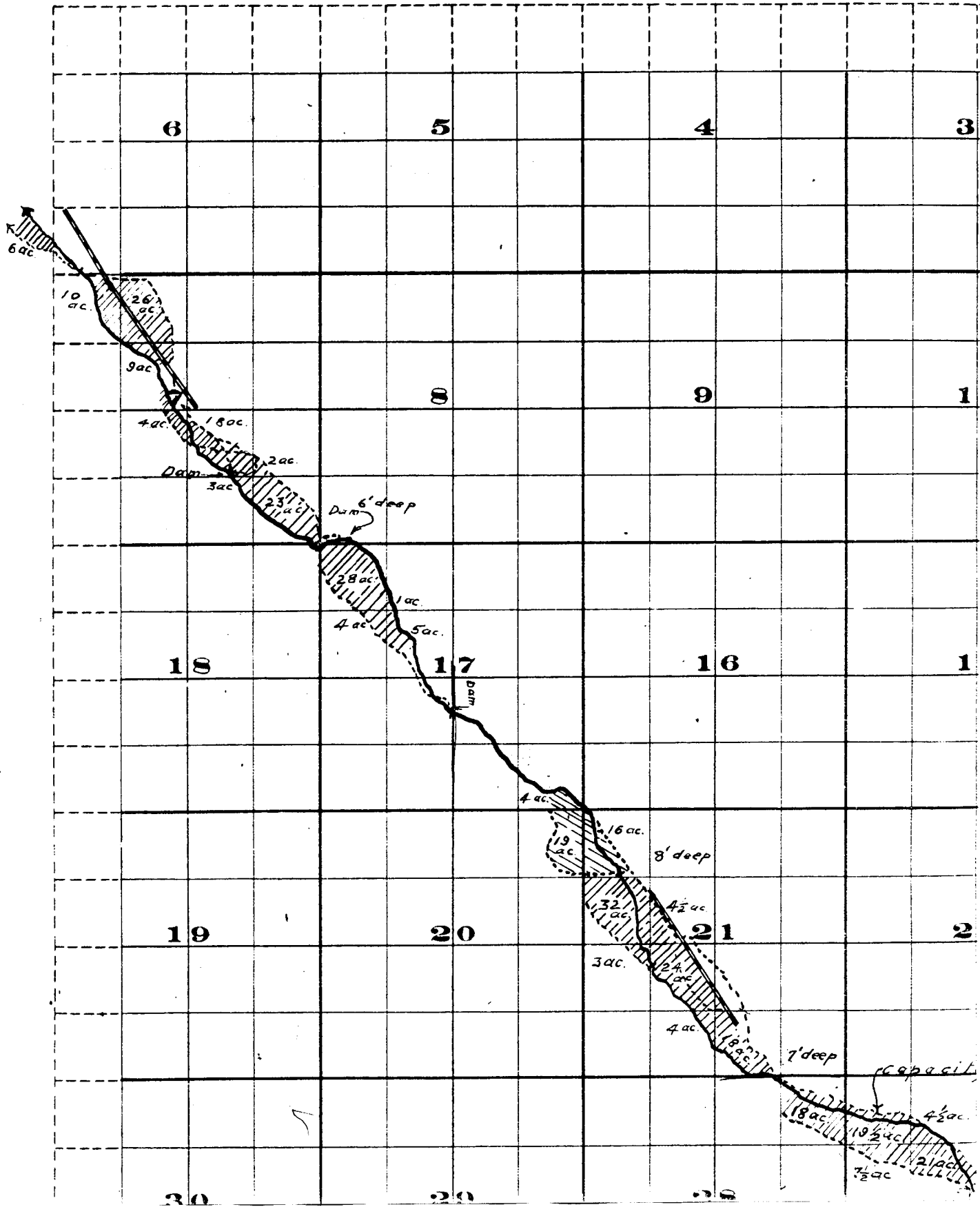


THE B. & B. BRISTOL CO., PRINTERS & BOUNDERS CHATTANOOGA, TENN.

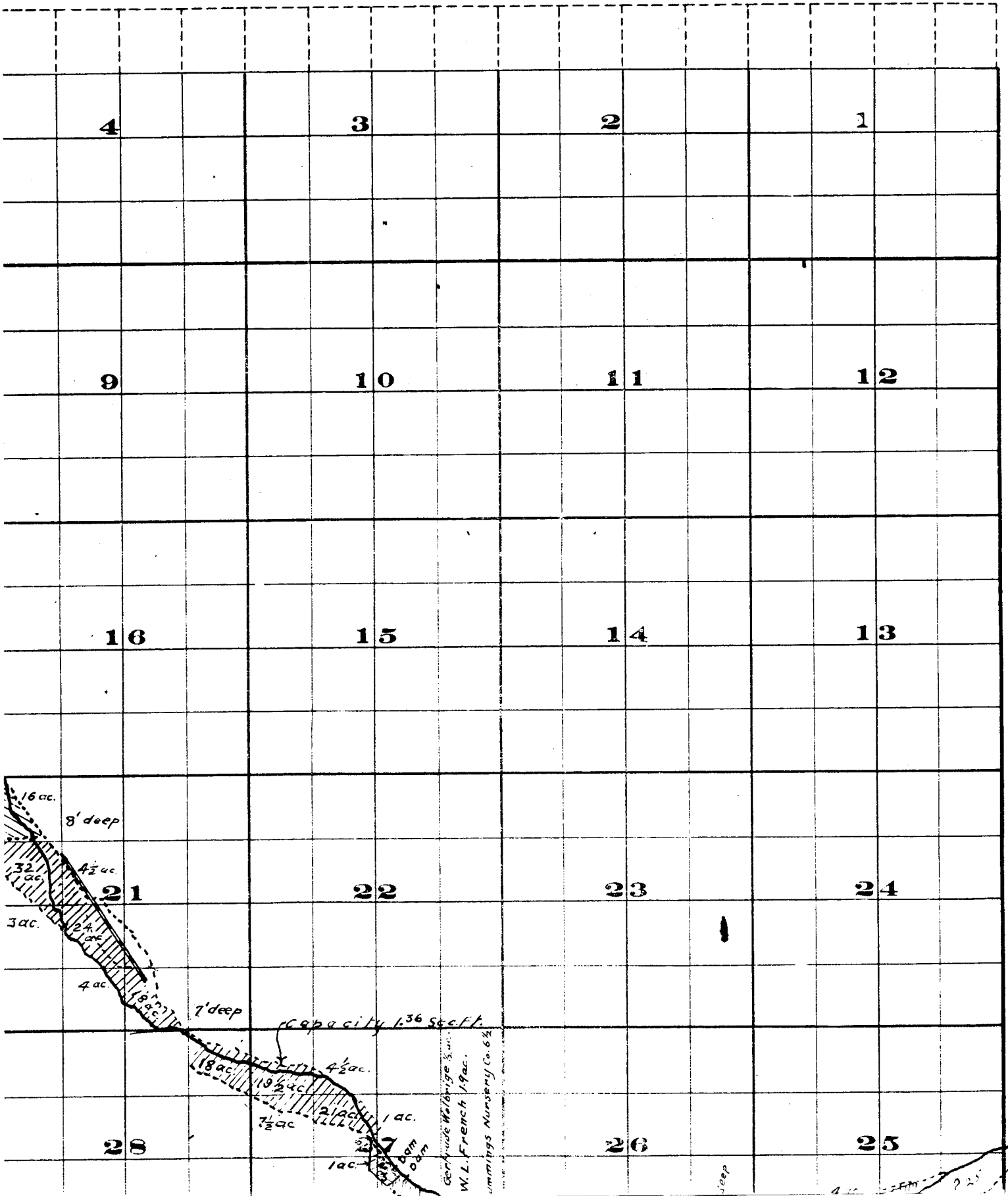
Surveyed by R.D.Cooper July 1909
John H. Lewis - State Engineer.
Examined July 14, 1909.



Township 2 S.

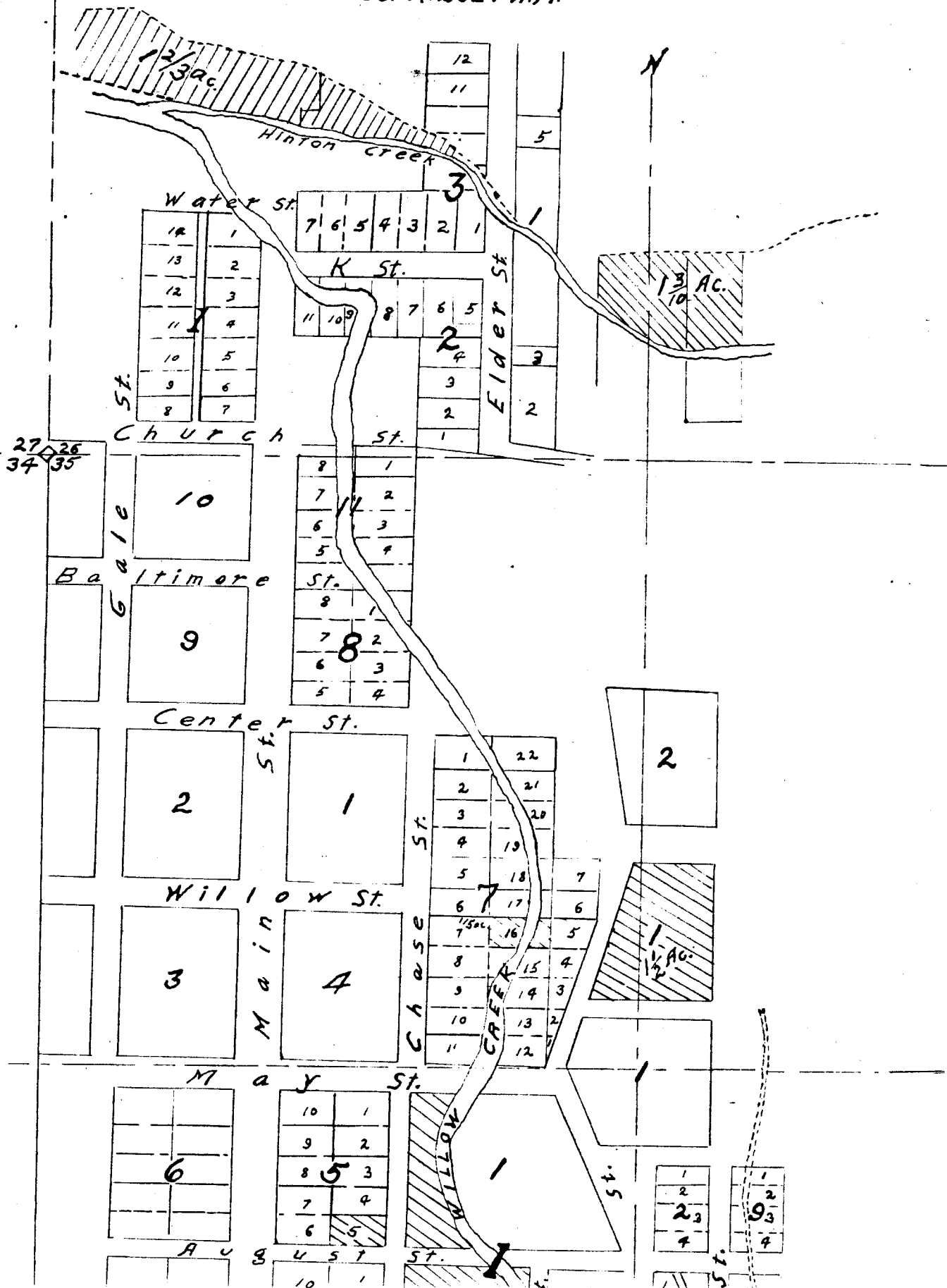


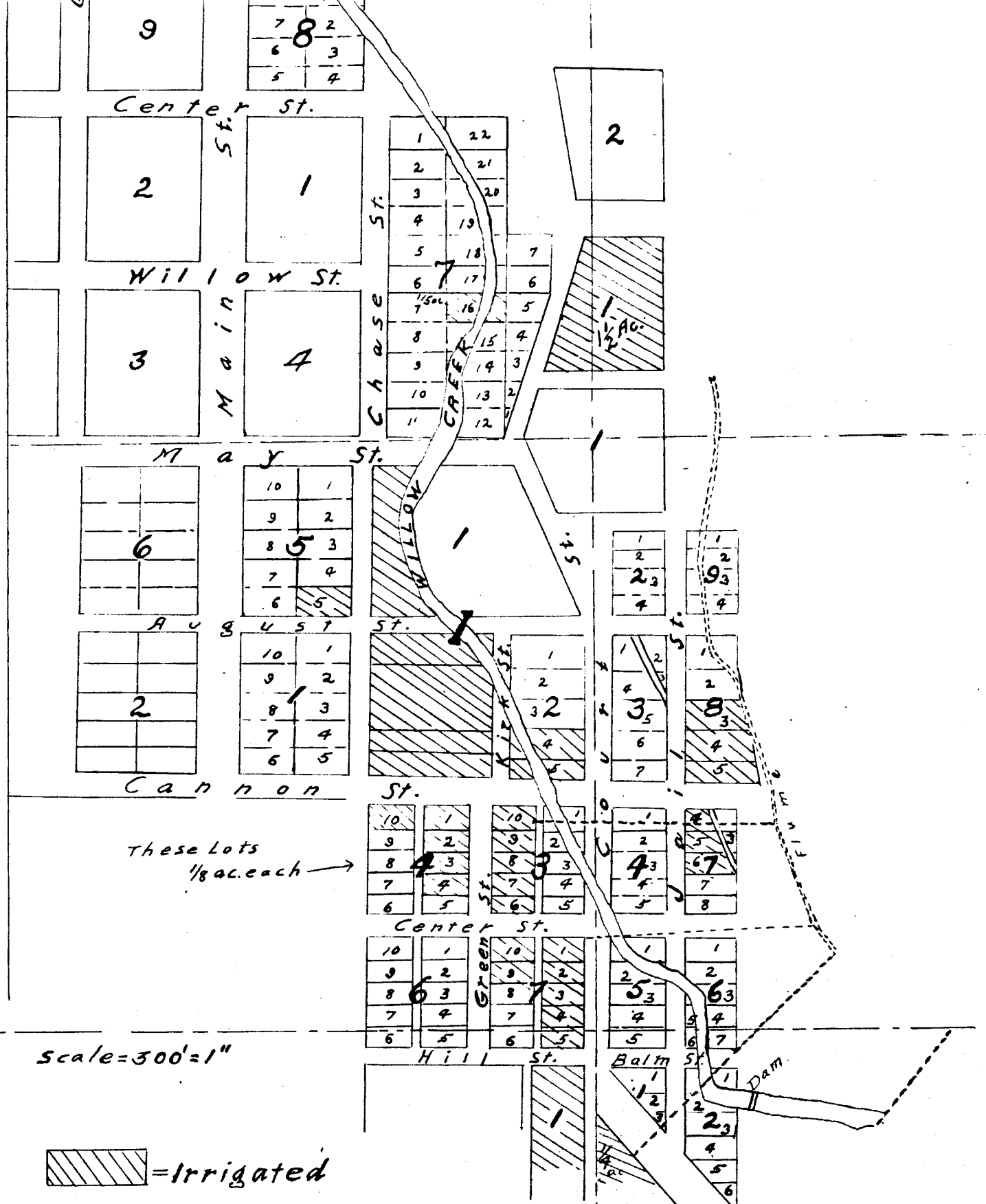
Range 26 E. W. M.



HEPPNER

Situated in T. 25. R. 26E. W.M.





John H. Lewis - State Engineer.

Examined - July 14, 1909.

Heppner

2S, 26E