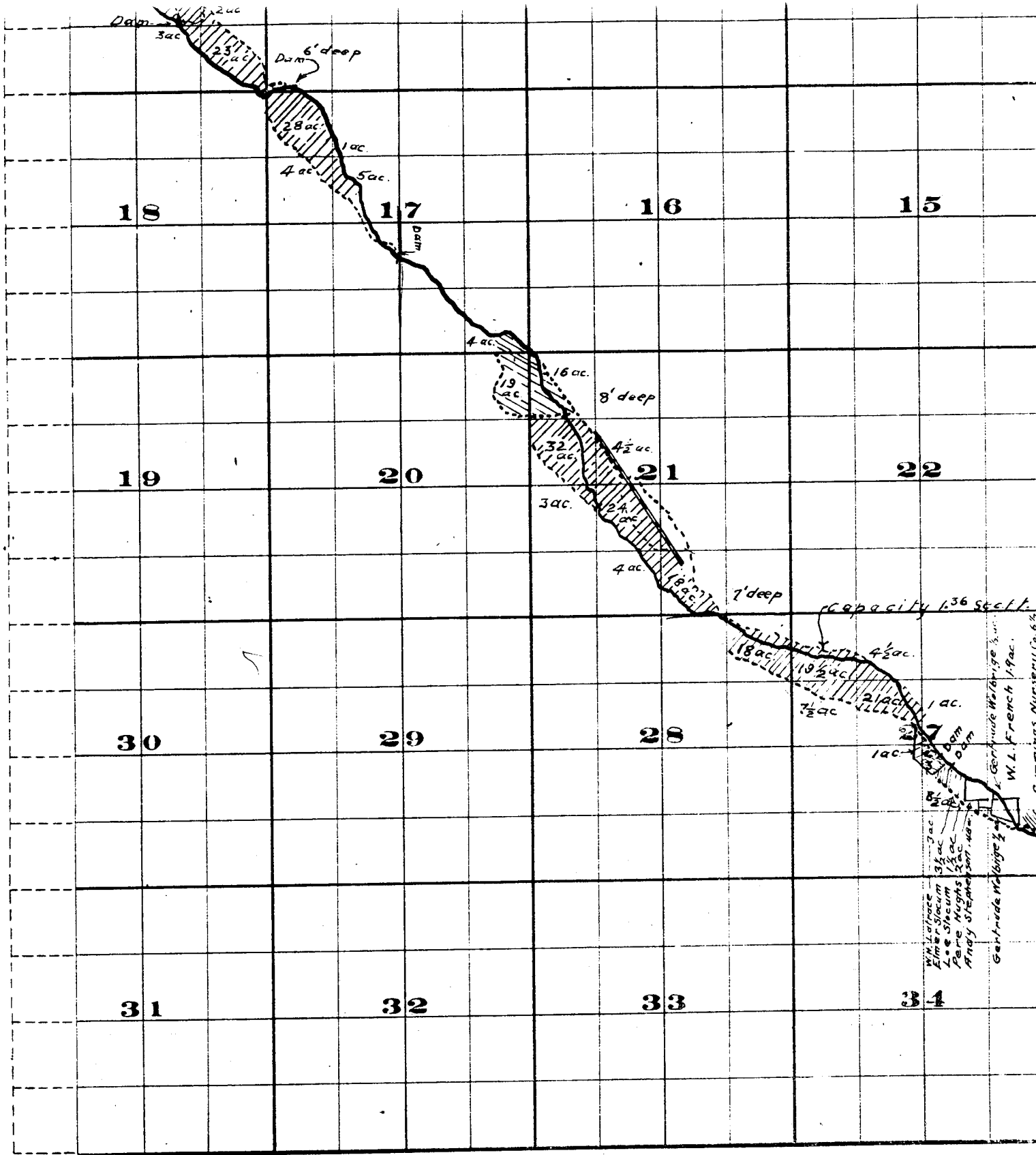


FROM OFFICE OF THE STATE ENGINEER

Willow Creek Adjudication



Part 35.26
25.26

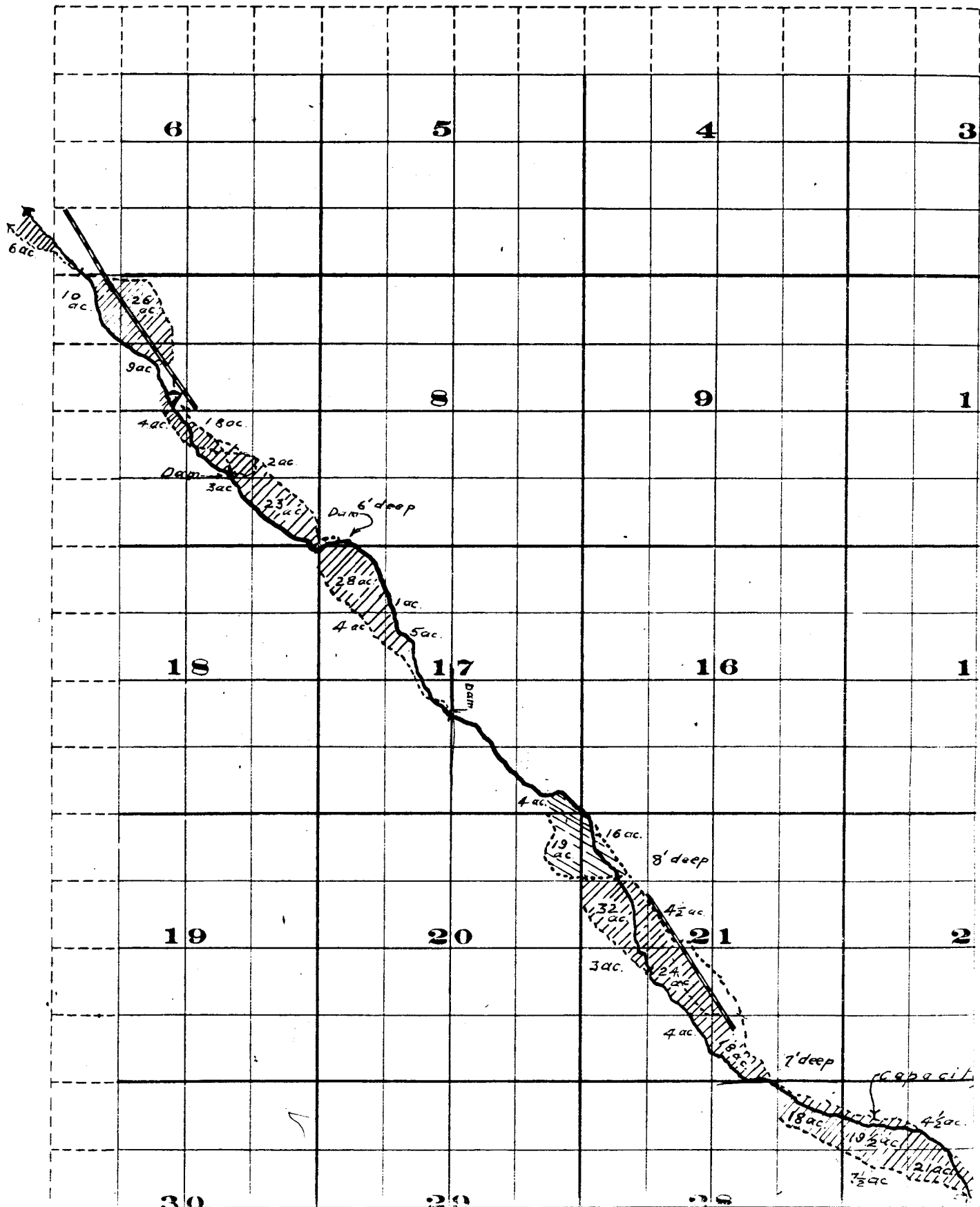


THE A. BRISTOL CO., PRINTERS & BOUNDERS CHRYSTIE ST. W.C.

Surveyed by R.D. Cooper July 1909
 John H. Lewis - State Engineer.
 Examined July 14, 1909.



Township 2 S.



Range 26 E. W. M.

