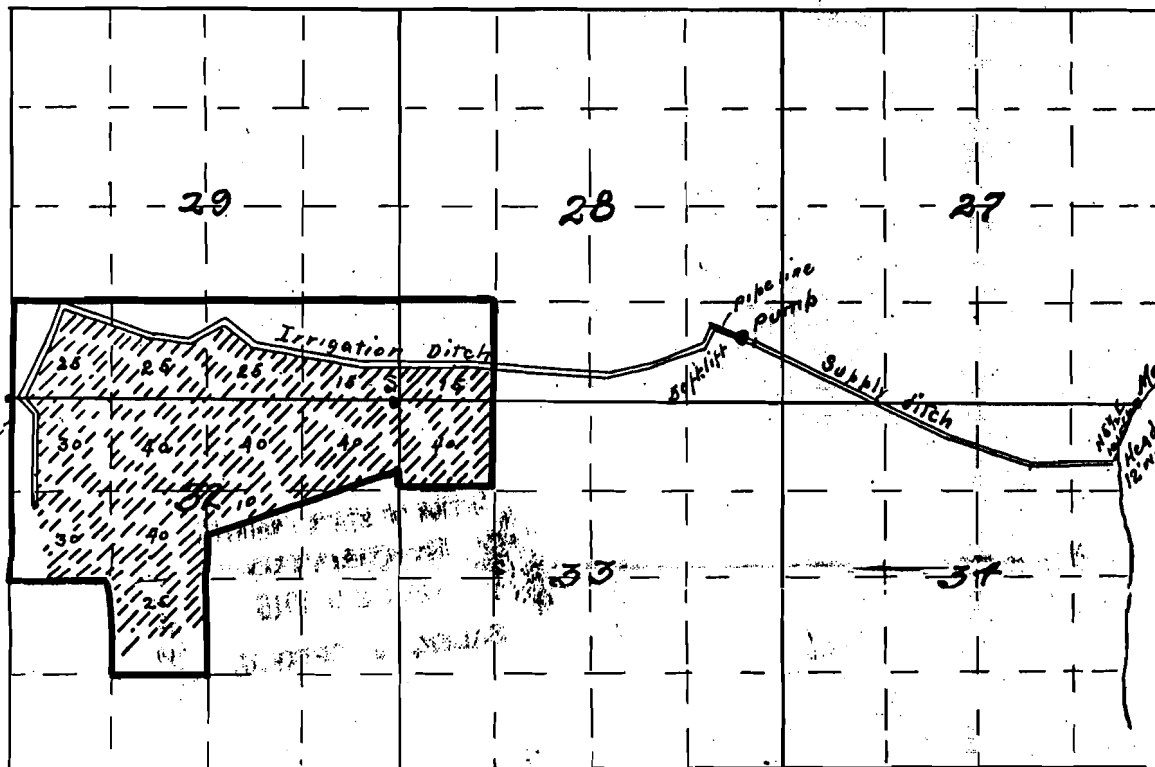


# Map of Emmitt Ditch

T39SR8E.



I, E. B. Henry, of Klamath Falls, Oregon, do hereby certify that this map was made from notes taken during an actual survey made under my immediate supervision on the 15<sup>th</sup> day of December 1915 and that it correctly represents the works described in the accompanying application together with the location of streams and other ditches in the immediate vicinity, and has written thereon the area in each smallest legal subdivision which it is proposed to irrigate.

E. B. Henry  
Surveyor.

2969  
2074  
167576  
8347  
7

secs  
3081732  
180

Klamath