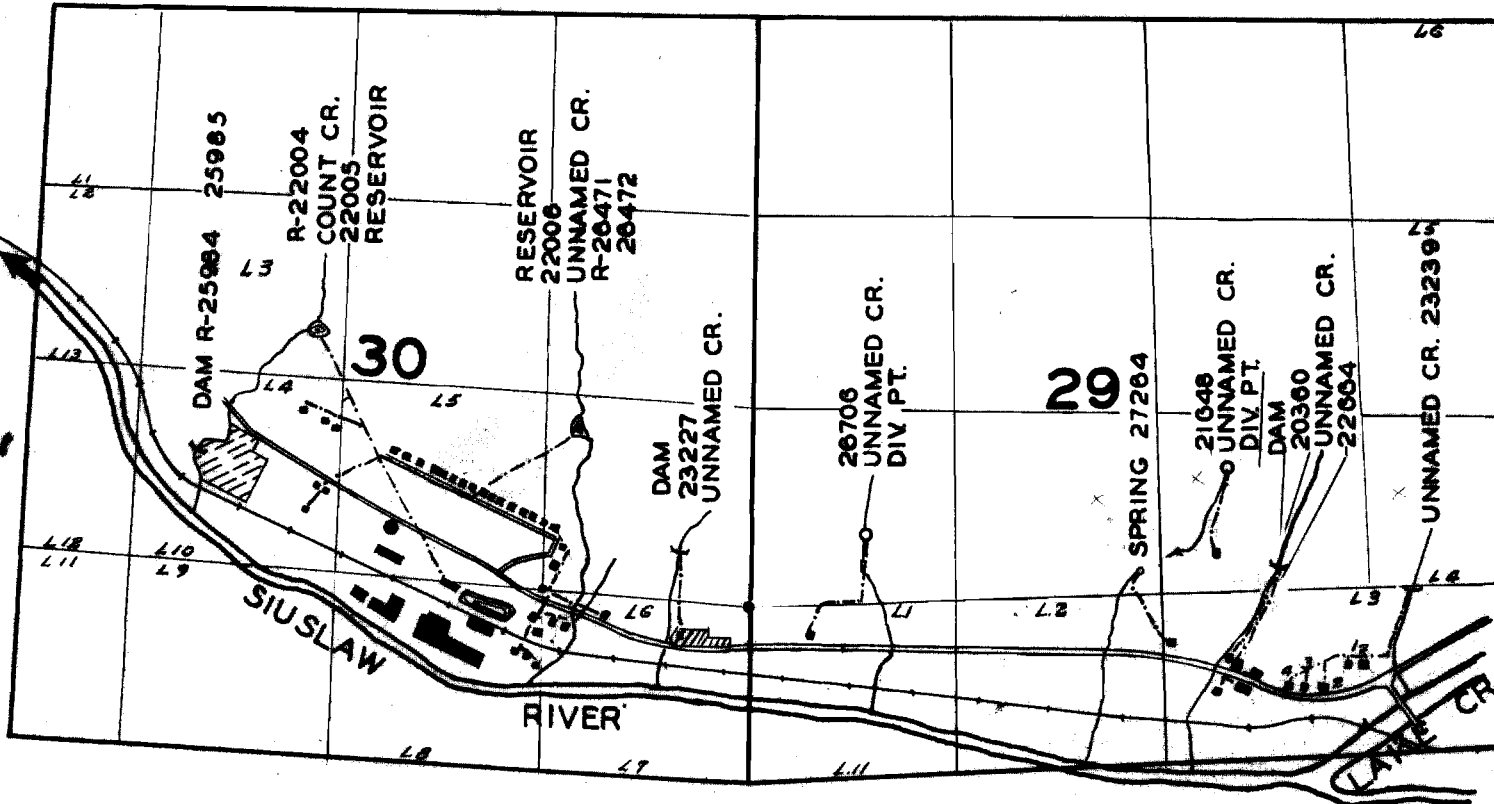


# T.17S. R.9W.W.M.



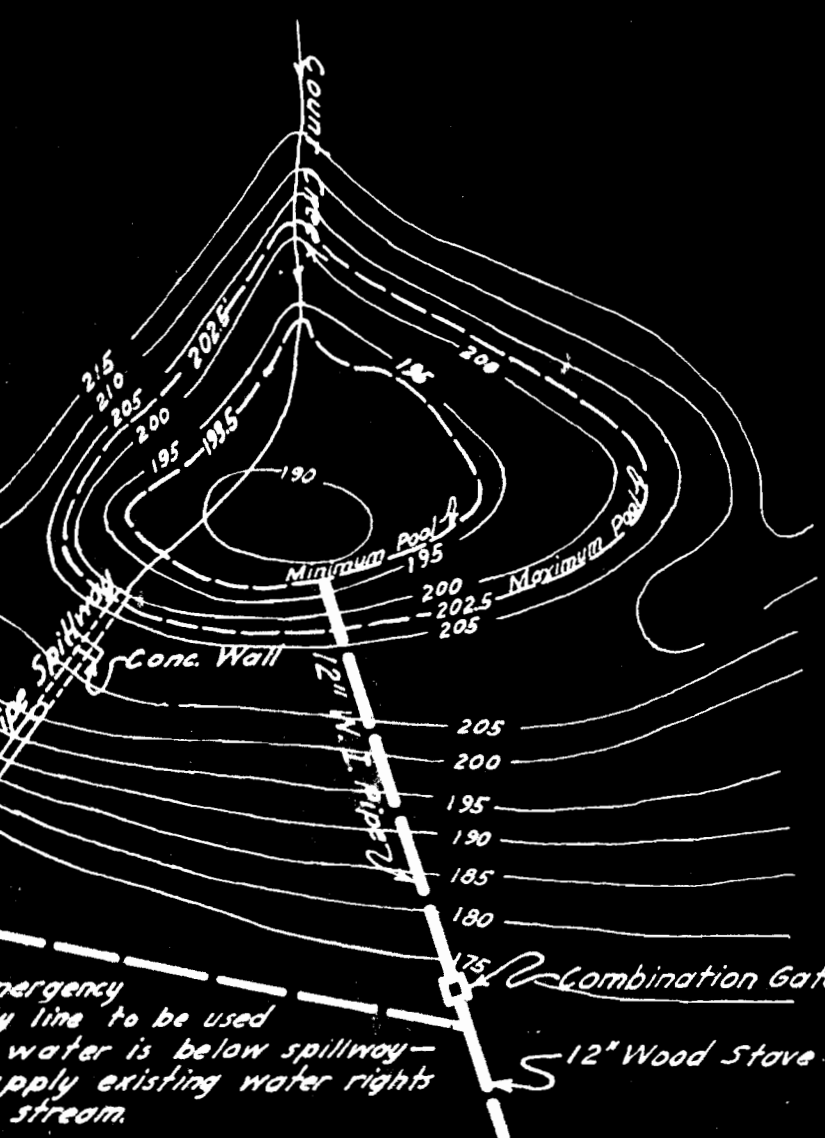
PIPE LOCATION APPROXIMATE

FINAL PROOF SURVEY  
UNDER

Name	Appl. No.	Permit No.
The Consumers Cooperative Assoc.	22006	17323
The Consumers Cooperative Assoc.	26472	20750
The Consumers Cooperative Assoc.	R-26471	R-1257
The Consumers Cooperative Assoc.	R-22004	R-853
The Consumers Cooperative Assoc.	22005	17322
The Consumers Cooperative Assoc.	22006	17323
Western American Lumber Co.	25985	20361
Western American Lumber Co.	R-25984	R-1170
Sam Haywood Lynch	20360	15882
Christopher C. Poissot	21648	17082
Walter H. Beers	27264	21447
Herman B. Holcomb	26706	20905
John N. Seaver & Sons & C. M. Lane	22664	17804
Byrd L. Tompkins	23227	18288
J. Mann, G. Brockman, L.L. Frazier, & C.E. Elder	23239	18304

Surveyed August 10, 11, 12 1954 by H. L. Coffman DBQ-17H-121

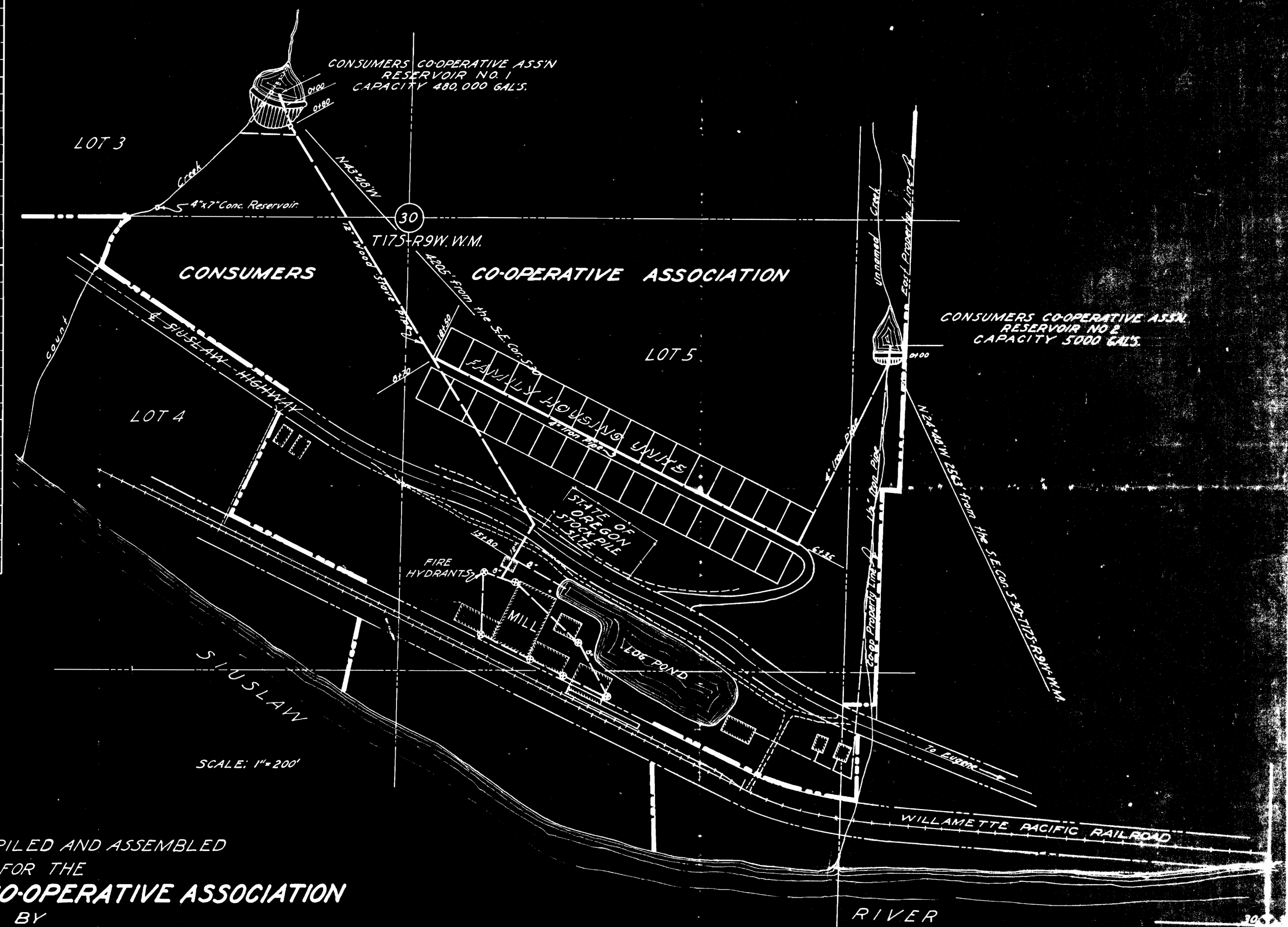
Note - Keep this tracing in folder 27264



I, Ralph L. Follett, of 1563 Grant St. Eugene, Oregon, do hereby certify that that this map was made from notes taken during an actual survey by me on August 12, 1946 and that it correctly represents the works described in the accompanying applications, together with the location of streams and other ditches in the immediate vicinity.

*Ralph L. Follett*  
 Registered Professional Engineer  
 July 9, 1937  
 Date of Registration

Oregon No. 1851



DATA COMPILED AND ASSEMBLED  
 FOR THE  
**CONSUMERS CO-OPERATIVE ASSOCIATION**  
 BY  
**FOLLETT & FORD**  
 AUGUST 1946 - SCALES AS SHOWN  
 Elevations based on an assumed datum.

Application No. R-21004-22005  
 Permit No. R-853