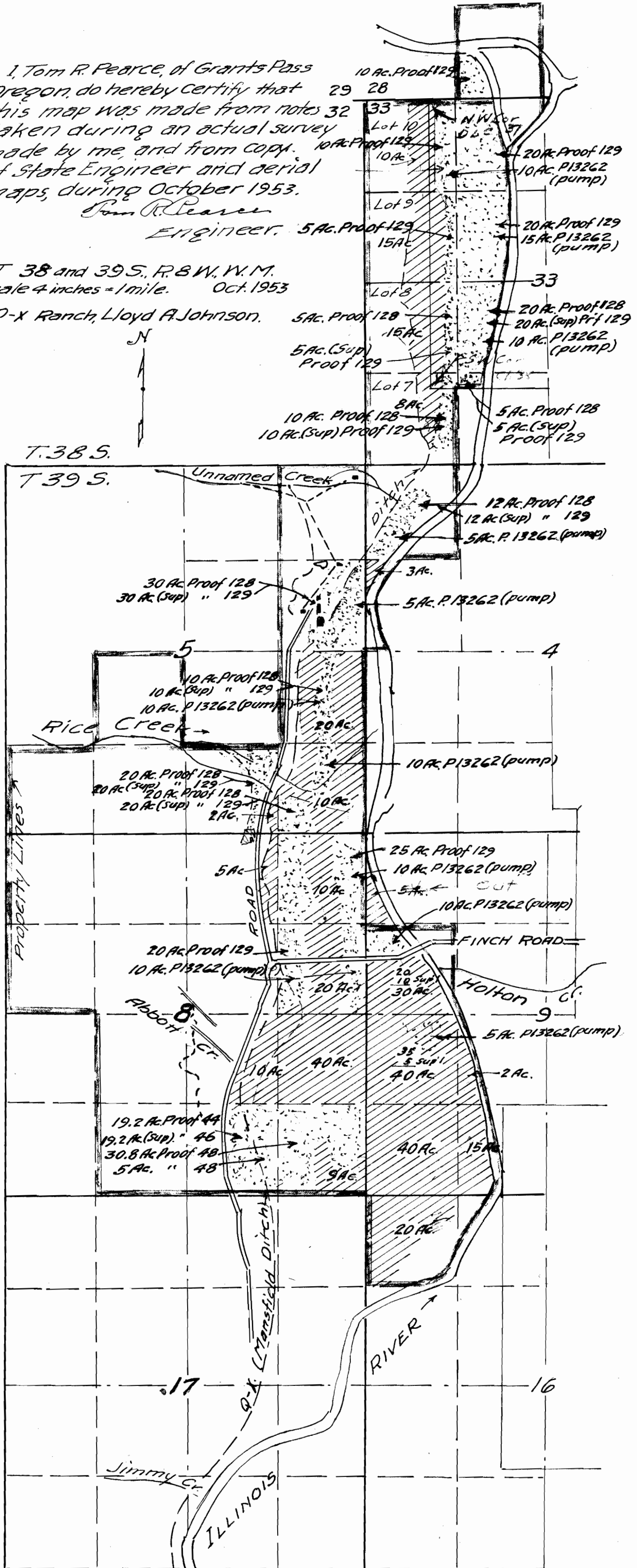


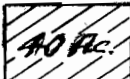
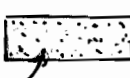
I, Tom R. Pearce, of Grants Pass Oregon, do hereby certify that this map was made from notes taken during an actual survey made by me, and from copies of State Engineer and aerial maps, during October 1953.

Tom R. Pearce  
Engineer.

T 38 and 39 S., R. 8 W., W.M.  
Scale 4 inches = 1 mile. Oct. 1953  
Q-X Ranch, Lloyd A. Johnson.



Legend:

-  This Application
-  Existing Rights

Monument Corner conc. Dam.  
Diversion



Application No. 28912  
Permit No. 22718