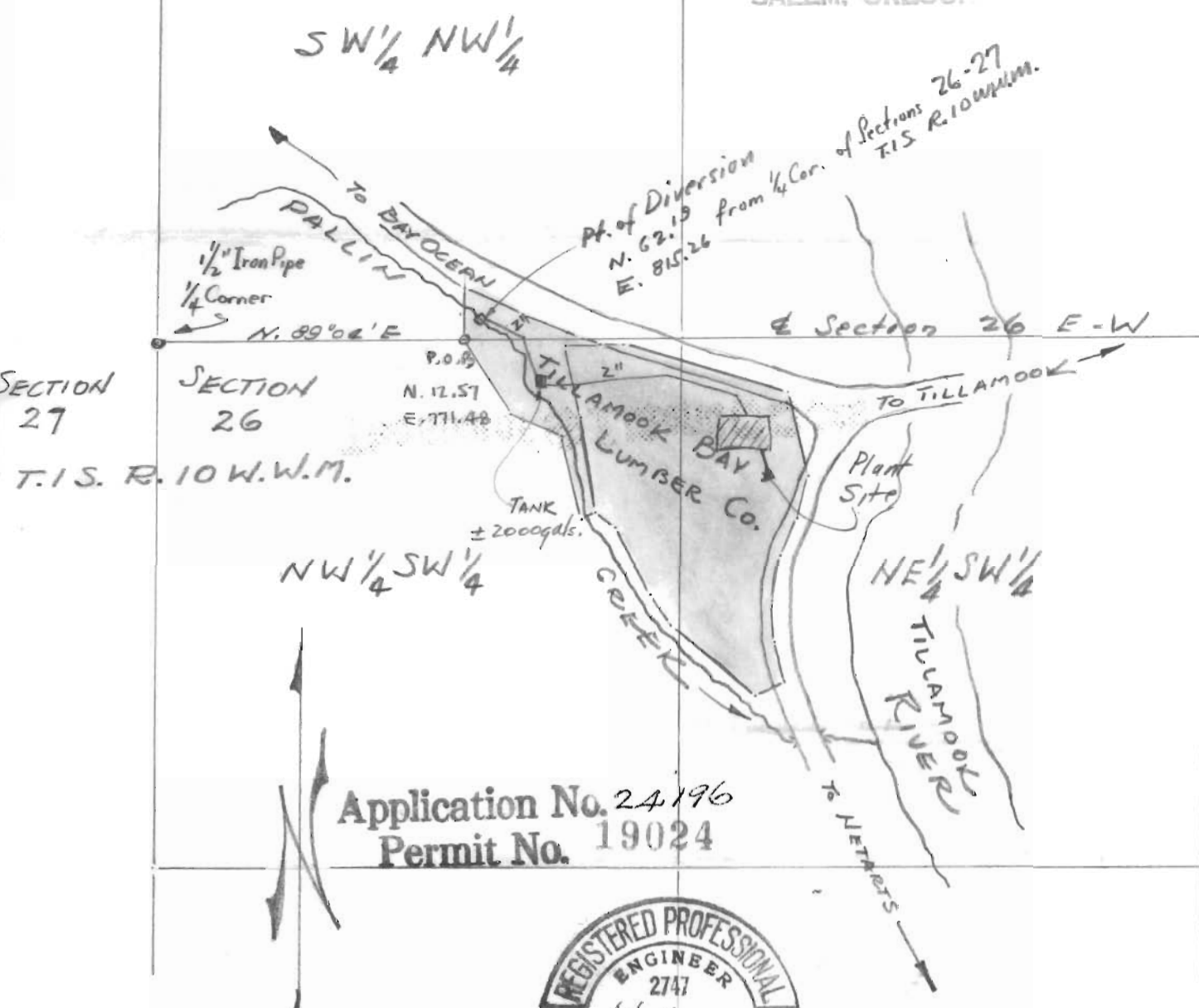


RECEIVED

NOV 29 1949

STATE ENGINEER
SALEM, OREGON



SECTION 27
T.1S. R. 10 W.W.M.

SECTION 26
T.1S. R. 10 W.W.M.

Application No. 24196
Permit No. 19024

Scale 1 inch = 400 feet
October 4, 1949



RECEIVED

OCT 7 1949

STATE ENGINEER
SALEM, OREGON

24196
1-13A

TILLAMOOK BAY LUMBER COMPANY WATER RIGHT APPLICATION

I, W. W. Hudson, of Tillamook, Oregon do hereby certify that this map was made from notes taken during an actual survey made by me on Sept. 28 - Oct. 4, 1949, that the monument (a 2" Pipe) is N. 62.19 and E. 815.26 from 1/4 Cor. Sect. 26-27 T1S R.10W.M. W. W. Hudson