

# MAP

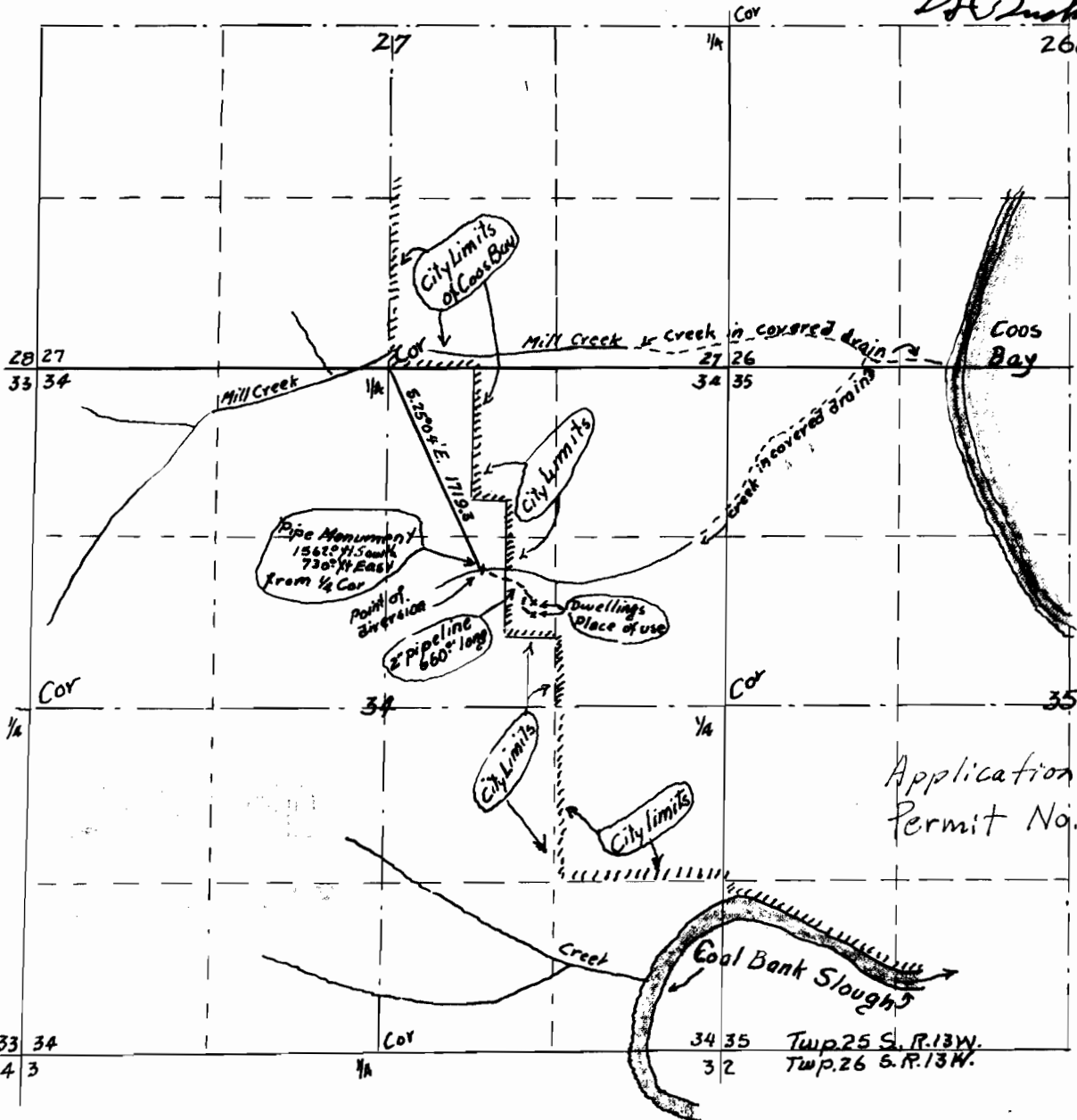
to accompany Application of  
 George Jenkins and W.H. Ferguson  
 for a permit to appropriate water  
 in Section 34, Twp. 25 S., R. 13 W. M  
Coos County, Oregon



Scale  
 One inch = 1/4 mile

I, D.L. Buckingham of Coos Bay, Oregon do hereby certify that this map was made from notes taken during an actual survey made by me, Sept. 4, 1948 and that the monument shown on this map, consisting of an iron pipe one inch in diameter and 36" long is set 30" in the ground at a point 1562° feet South and 730° feet East from the 1/4 Section Corner between Sections 27 and 34 of Twp. 25 S., of Range 13 W. W. M, Coos County Oregon.

*D.L. Buckingham*



Application No. 23470  
 Permit No. 10000

Twp. 25 S., R. 13 W.  
 Twp. 26 S., R. 13 W.