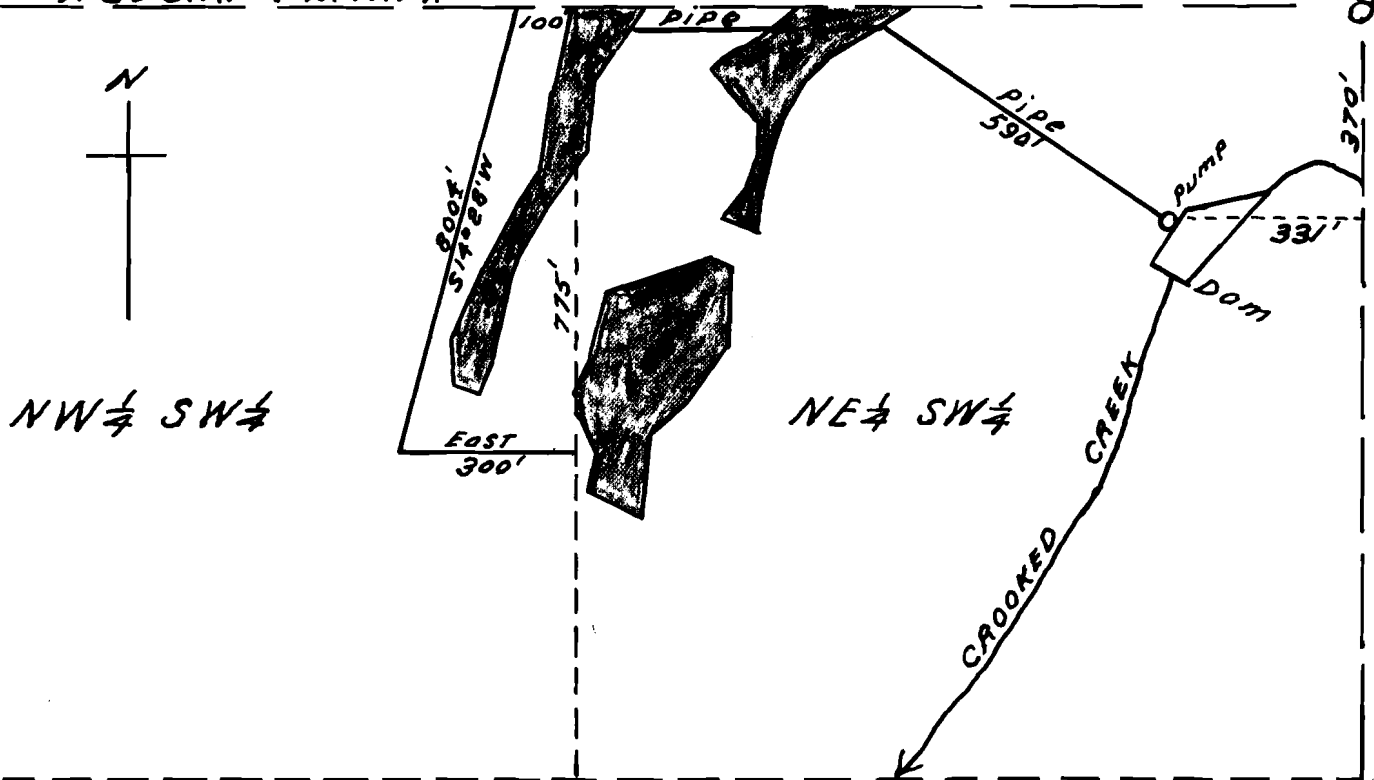


$\frac{1}{4}$ COR.
78

T. 29 S. R. 14 W. W. M.



Scale 1 in. = 330 ft = 5 chs.

Map accompanying application of
Ernest A. Paulsen
to appropriate water.

Application No. 215-55
Permit No. 16901

I, J. N. Gearhart, of Myrtle Point, Oregon, do hereby
certify that this map was made from notes taken
during an actual survey made by me, on Mar. 30,
1946, and that it correctly represents the works
described in the accompanying application
together with the location of streams in the
immediate vicinity.

J. N. Gearhart
Oregon No. 183

RECEIVED