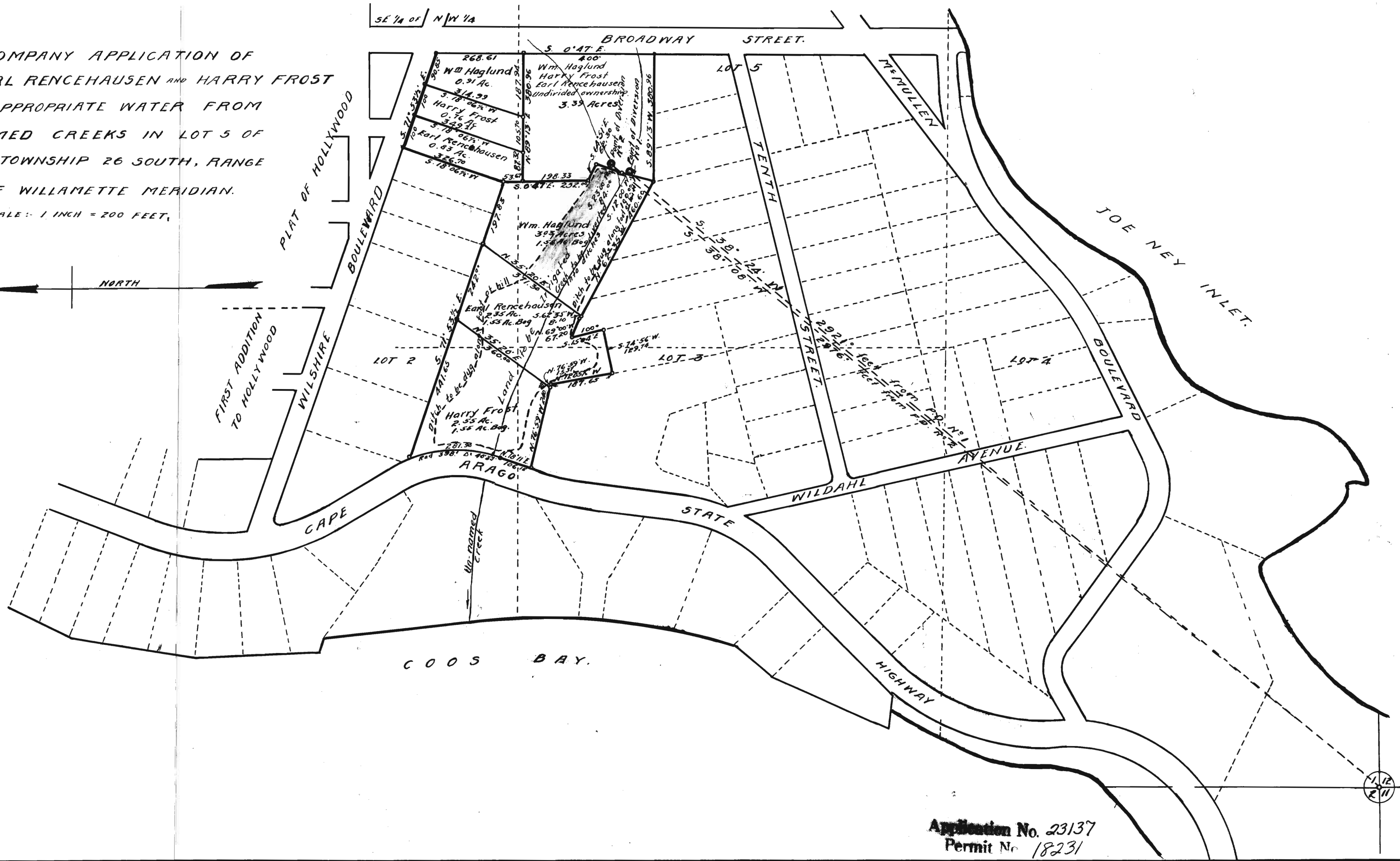


PLAN TO ACCOMPANY APPLICATION OF  
 WM. HAGLUND, EARL RENCEHAUSEN AND HARRY FROST  
 FOR RIGHT TO APPROPRIATE WATER FROM  
 TWO UN-NAMED CREEKS IN LOT 5 OF  
 SECTION 1, TOWNSHIP 26 SOUTH, RANGE  
 14 WEST OF WILLAMETTE MERIDIAN.

SCALE: 1 INCH = 200 FEET.



C. F. Bessie.

Application No. 23137  
 Permit No. 18231